



Nottingham University  
**Business School**

UK | CHINA | MALAYSIA

# Doctoral programme

AACSB

Business  
Education  
Alliance  
Member



ASSOCIATION  
OF  
**AMBA**  
ACCREDITED

EFMD  
**EQUIS**  
ACCREDITED

# Contents

|                                     |    |
|-------------------------------------|----|
| Welcome                             | 3  |
| Why study with us?                  | 4  |
| Research interests                  | 5  |
| Get connected                       | 6  |
| Career and professional development | 7  |
| Doctoral programme                  | 8  |
| Subject groups                      | 10 |
| Study environment                   | 18 |
| Nottingham life                     | 20 |
| Fees and funding                    | 22 |
| Applying                            | 23 |

# Welcome to Nottingham University Business School

**With over 100 doctoral researchers from all over the world, we are one of the UK's most diverse research-led business schools, offering you a truly global experience.**

Research is at the centre of all our activities and our doctoral programmes are an integral part of our strategy for research excellence.

We aim to inspire and challenge you intellectually and prepare you for a successful career, not only in academia but also commerce, industry or the public sector. Our graduates are now working in prestigious research universities, multinational corporations, governments and public sectors worldwide.

To enable you to become a well-rounded management researcher, we offer a supportive atmosphere with outstanding research training and supervision from internationally recognised scholars across a wide range of disciplines. Our success in the most recent Research Excellence Framework, which ranked us 6th in the UK by research power, indicates the high quality of our research environment.

We are delighted that you are considering doctoral study with Nottingham University Business School and hope you will join us.

**Dr Hang Le**  
Director of Doctoral Programmes



**EQUIS accredited**  
in the UK, China and Malaysia  
European Foundation for Management Development



**6th in the UK**  
for research power  
Research Excellence Framework, 2014




**Significant investment**  
in the University's vision for research




Why study with us?

# Further your knowledge at Nottingham

**With campuses in Nottingham, China, and Malaysia, the University of Nottingham has a long history of developing world-changing research.**

Our research generates discoveries, many of which have profound social, economic and cultural benefits and address major global challenges. Doctoral students make significant contributions to this pioneering work and can get involved in projects which have been rated internationally excellent.

## Unrivalled global reach

Nottingham University Business School operates across three campuses in the UK, China and Malaysia, providing a unique global perspective and connection to research opportunities.

The University is home to 45,000 students from more than 150 countries, and has strong relationships with institutions around the world. We will develop your international perspective and connect you to a global network of leaders, academics and fellow research students.

## Leading research

Nottingham is part of the prestigious Russell Group of universities and our staff are among the leading researchers in their fields. Our centres and institutes work with global businesses and regional enterprises to develop practical and relevant thought leadership.

The UK's latest Research Excellence Framework ranked us 6th among UK business schools for research power. This high standard of research activity informs the content and design of our PhD programme, ensuring that we combine relevant academic theory with a positive impact on business practice.

Research interests

# Great minds grow together

**A world leader in business and management research, Nottingham University Business School has a distinctive global reach and impact. Our academics are actively involved in a variety of projects in the UK, China and Malaysia, and with companies and organisations all over the world.**

A large and vibrant community of doctoral research students is central to our research culture. The Business School hosts prominent conferences and networking events to enhance the profile of individual researchers and the school as a whole. Internationally prominent scholars are invited to speak or collaborate. We invest in our research and offer a supportive and collaborative environment to support your success.

We focus on accounting and finance, corporate social responsibility, sustainability, innovation and entrepreneurship, industrial economics, information systems, marketing, operations management, organisational behaviour, human resource management and strategy.

As a Champion School for the United Nations Principles for Responsible Management Education, we also promote student research addressing the United Nations' Sustainable Development Goals.

## Centres and institutes

Our strong links with a large number of key businesses mean you will benefit from their business experience as well as the innovative research at our leading research centres and institutes. This reflects our strengths in areas such as banking, finance and financial services, healthcare management, sustainability, and enterprise and innovation.

- The Haydn Green Institute for Innovation and Entrepreneurship
- The Global Centre for Banking and Financial Innovation
- International Centre for Corporate Social Responsibility
- Centre for Health Innovation, Leadership and Learning
- Centre for Research in the Behavioural Sciences
- Africa Research Group
- China Research Group
- N/LAB: Neo-demographic Laboratory for Analytics in Business



We maintain close links with a number of commercial, industrial and public concerns, which facilitate data collection and fundraising for new research projects.

Recent funding has come from:

- Economic and Social Research Council
- Engineering and Physical Sciences Research Council
- Bill and Melinda Gates Foundation
- Technology Strategy Board
- European Union - Framework 7
- National Institute for Health Research
- Health Foundation
- Innovate UK
- British Academy
- Leverhulme Trust
- Newton Funds (British Council)

The Business School has a number of interdisciplinary links with schools and departments across the University, including economics, geography, history, politics and international relations, medicine, and engineering.

We have ongoing research projects with numerous international companies, organisations, and small and medium enterprises (SMEs) including:

**Tesco, Marks & Spencer, Experian, Dairy Farm Group, Walgreens Boots Alliance, Tigo Mobile, Rolls-Royce, Ford Motor Company, Volvo Aerospace, National Health Service and World Bank Group, plus networks of firms within the biotechnology, telecommunications, sustainable energy and creative industries**

# Join the network

## PhD Business Society

Part of the Students' Union's Postgraduate Student Association, the PhD Business Society serves all Business School PhD students. It provides peer support and aims to create a sense of community for its members.

Events and activities include:

- an induction event and guide to welcome new PhD students
- peer support seminars to provide academic support for module assessments
- social events during the academic year to share and celebrate our experiences and achievements
- chairing the learning community forum
- career workshop to help with planning for life after a PhD
- research software training

## Sustainability Research Network

Founded by PhD students, the Sustainability Research Network acts as a platform for those working on sustainability topics to meet and share ideas and expertise across disciplines. There are over 370 members from more than 20 different schools across the University including business, education, engineering and sciences. The network also covers the University's Malaysia Campus.

## Business Leaders Series

You are welcome to attend our exclusive series of guest lectures from top business leaders who come to the school to speak to students, staff, alumni, and visitors from the regional business community. Past speakers have included Willie Walsh – Chief Executive, International Airlines Group.

These events provide you with unique opportunities to hear from some of the world's best business practitioners and to network with alumni and visitors from business and industry.

## Financial Minds

The Financial Minds events are a series of finance-themed talks for alumni and students on specific business related topics as part of professional development for students.

## Alumni network

All our doctoral students become lifelong members of the Business School Alumni Association and have access to a network of more than 17,000 graduates in over 110 countries. Many of our alumni stay involved with the school through acting as recruiters, interviewers, mentors, contributors to modules, and advisors to prospective students.



“Fully funded by a tax-free scholarship, my income was only marginally less than it was during my previous job in the corporate governance industry. When I needed extra advice, support, training and feedback, I found it in abundance from a community of academics who are leaders in their field.”

Dr Ian Gregory-Smith, PhD  
Senior Lecturer in Economics,  
University of Sheffield

# Your career, your way

## Research students benefit from the school's specialist Postgraduate Careers Team who can help you develop your career management skills and explore your options.

With individual careers consultations, skill development events, guest lectures and an online careers resource area, we can support you in planning a career within academia or industry.

Around 80% of our research postgraduates continue with an academic career nationally or internationally. Others move into a variety of sectors including consultancy, risk management, finance and financial services, the public sector and self-employment.

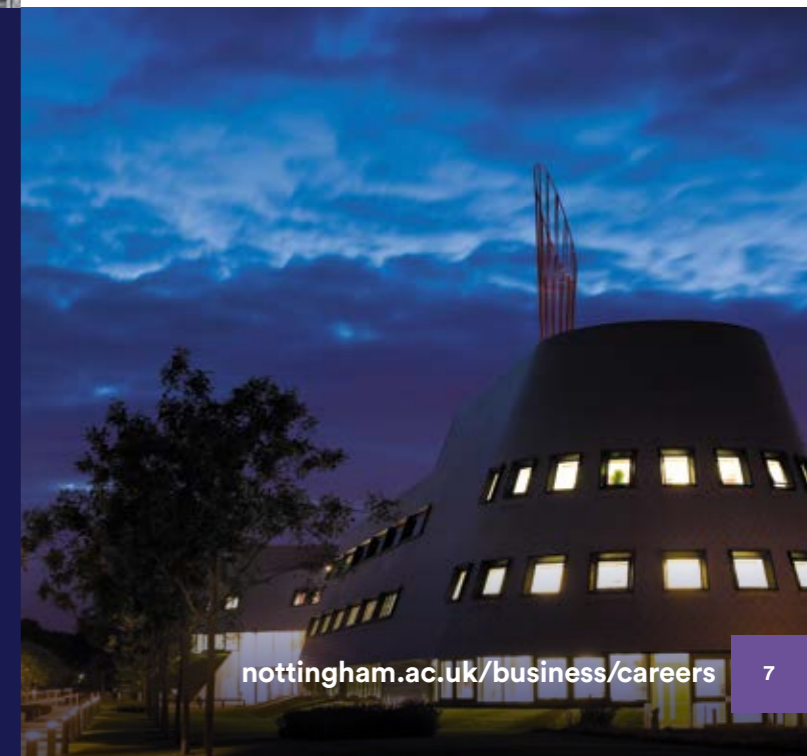
The University's Graduate School also offers career management sessions for research students. Find out more at [nottingham.ac.uk/graduateschool](https://nottingham.ac.uk/graduateschool)

## Working globally

Our online subscriptions and global networks ensure you have access to information on working in a variety of countries worldwide.

## Working in the UK

We arrange immigration talks from legal experts to help international students understand the latest regulations in relation to working in the UK. For up to date information on the UK's visa and immigration regulation, visit [gov.uk](https://gov.uk)



# Completing your research

**With an international reputation for business research excellence, we offer a superb opportunity to develop your research skills through PhD study.**

A PhD is the most advanced form of postgraduate study. It is awarded on the successful completion of supervised research, verbal examination and final thesis. We offer PhDs in the following areas.

**Business and Management**

**Banking, Finance and Risk**

**Industrial Economics**

## Expert supervision

You will normally be assigned two academic supervisors who will provide expert guidance on the formal specification of your topic, the structure and organisation of your thesis, and the general direction of your research.

Regular supervision helps to ensure that your research progresses in the appropriate direction. Full-time doctoral students meet with their supervisors at least 10 times during the year. For part-time students, at least six meetings take place each year.

## Taught modules

To help you in the transition to independent research, you will normally be expected to complete a number of assessed taught modules during your first and second year of study. These are designed to provide generic as well as subject specific training for relevant pathways. You may also be required to take up to 20 credits of other modules in the school/faculty.

## Research training programme

In addition to attending research training modules provided by the Business School, you will attend relevant training courses provided by the Graduate School. These include courses relating to use of IT and library resources, research management, research skills, presentation and communication skills, and research ethics. Supervisors will advise you which Graduate School courses are appropriate for your specific training needs.

## Conferences, seminars and workshops

All postgraduate students are expected to attend our annual PhD conference, seminar programme and relevant research workshops. Seminars take place regularly, usually on Wednesday afternoons, and are given by a range of both internal and external speakers.

In addition to the seminar programme, we offer a doctoral seminar programme that focuses specifically on the PhD research process, particularly the more informal aspects of doing research and getting it published. These are aspects of researchers' lives that are rarely discussed in journals and books, but are, nevertheless, vital for emergent scholars to understand and appreciate, regardless of their disciplinary field or background.

## Visiting speakers

In addition to the school's Business Leaders Series (see page 6), our centres and institutes host regular speakers from academia, business and industry, as well as high-profile conferences.

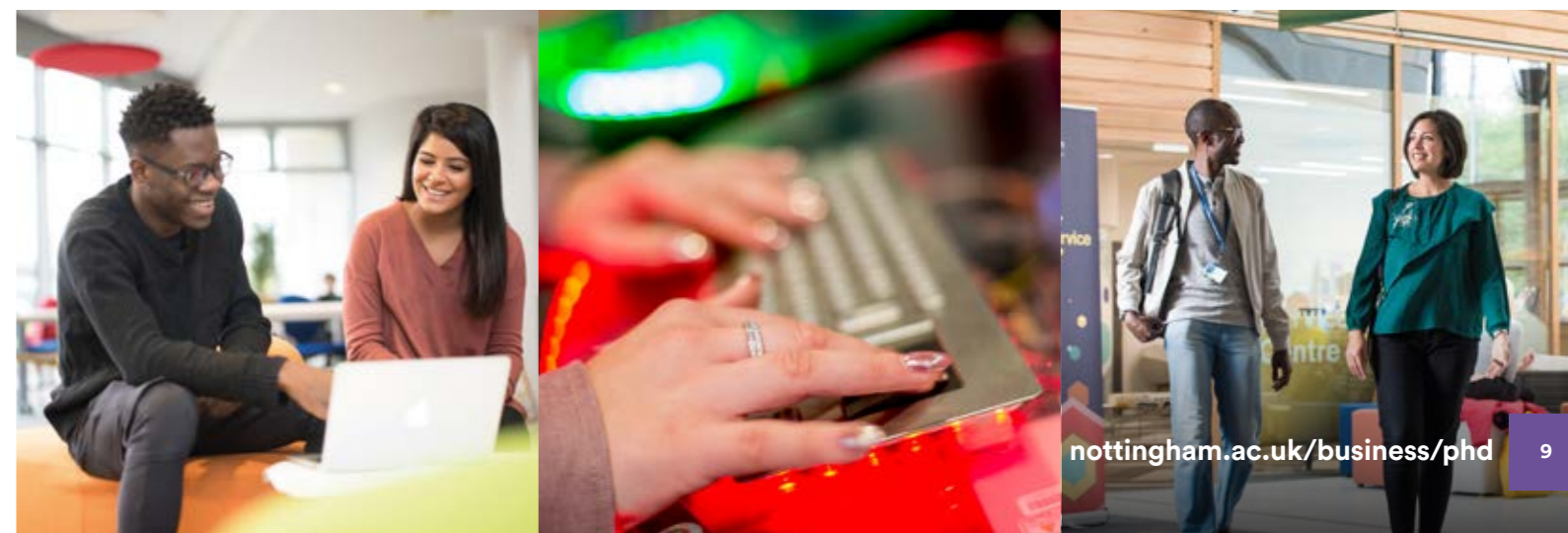
# Confirmation of PhD status and annual reviews

If you are admitted to the University to study for a doctorate you will normally be registered at PhD level. At the end of year one, subject to the satisfactory completion of the annual review, your PhD status will be confirmed or, if unsuccessful, you may be asked to switch to an MPhil. Completion of all doctoral research training modules is a necessary prerequisite for confirming PhD status.

The annual review requires you to submit a document detailing your work and make a short presentation about your research to a review panel of assessors. You will undergo a similar annual review at the end of years two and three. The annual review at the end of the third year will decide whether you can register as 'thesis pending'.

| Typical timeline |   |              |                |
|------------------|---|--------------|----------------|
| Year             | Semester one  | Semester two | Semester three |
| One              | Taught courses in the Business School and Graduate School   |              | Annual review  |
|                  | Define the nature of the research problem, identify appropriate analytic frameworks, and complete a first draft of literature review chapters |              |                |
| Two              | Taught courses in the Business School and Graduate School   |              | Annual review  |
|                  | Complete the majority of any empirical work   |              |                |
| Three            | Begin formal writing-up   |              | Annual review  |
|                  | Complete empirical work and produce draft write-up of results   |              |                |

Please note that while a year four 'thesis pending' period is available, you are expected to submit your thesis within three years. You should aim to write up regularly over the three years, preparing chapters for your supervisors to read and comment on. This will help ensure that when the 'thesis pending' period begins, you have a first draft of a thesis ready for modification.



# Accounting

Expertise in accounting is among the school's particular strengths and members of this group conduct research in many aspects of accounting and law, publishing widely in distinguished journals.

Accounting staff have specific expertise in:

- market-based accounting research
- voluntary disclosure
- corporate governance
- management accounting and control
- legal systems in developing countries
- financial accounting
- accounting history
- accounting education and taxation
- accounting and business law

The group offers expert supervision and support for students taking PhD Accounting and holds regular seminars and workshops with visiting scholars in the field.

## Priority research areas

### Corporate Governance and Legal Development in Business

- Ongoing research to examine executive remuneration, ownership structure and boards of directors in Chinese companies and financial institutions
- Legal developments in China and Asian business in general
- International trade and the role of the World Trade Organisation

### Management Accounting and Performance Measurement

- Research in the management accounting profession and in particular, the identity and image of management accountants and professional competition
- Performance and financial management regimes across the public sector, specifically local authorities and fire and rescue services
- Process of management accounting change

## Expert supervision

For details of potential supervisors, please visit [nottingham.ac.uk/business/phd/supervisors](http://nottingham.ac.uk/business/phd/supervisors)

"I chose to continue my studies after taking an MSc with the Business School because doing a PhD here means working with experienced and prominent scholars. Nottingham is a top UK research institution, which is widely recognised for its academic excellence."



Giulia Fusi, PhD

# Finance

The finance group carries out world-class research covering all major aspects of finance.

Our research strengths show in the journals we publish in, including the *Journal of Financial Economics*, *Journal of Finance*, *Review of Finance*, *Journal of Corporate Finance*, *Financial Review*, *European Financial Management*, *Economics Letters*, *European Journal of Finance*, *Review of Quantitative Finance and Accounting*, *Journal of Banking and Finance*, *Journal of Financial Research*, *Journal of Real Estate Finance and Economics*, and *Mathematical Finance*.

The highly competitive PhD Finance and Risk is a combination of rigorous training and supervision by leading scholars, suitable for students with a strong quantitative and finance background.

It will help you learn the theoretical and empirical tools of research in a systematic manner, and you will also be able to attend workshops taught by specialists from the Business School and visiting scholars. You will work closely with dedicated academics, many of whom successfully publish in top academic journals with their doctoral students.

We offer a wide range of stimulating research activities in which our doctoral students play a full and active part. This includes a successful finance seminar series with speakers from Boston College, Cambridge (Judge), Cardiff, Cass, Columbia, Imperial, Harvard, Lancaster, LBS, LSE, Manchester, Oxford (Said), Warwick, Wharton, NYU and other notable schools.

We also hold an annual finance doctoral colloquium for our students to showcase their research. You will work in a strong supporting network of finance doctoral students and have access to a number of top financial databases and software to carry out your research, including WRDS, Datastream, Bloomberg, Bankscope, SNL Financial, Thomson One, and Fame.

## Priority research areas

- Asset pricing
- Banking regulation
- Behavioural finance
- Corporate finance
- Corporate governance
- Corporate risk management
- Financial derivatives
- International finance
- Mathematical finance

## Expert supervision

For details of potential supervisors, please visit [nottingham.ac.uk/business/phd/supervisors](http://nottingham.ac.uk/business/phd/supervisors)

# Industrial economics

We have one of the largest and most varied groups of industrial economists in the UK.

A number of significant research grants support our work in these areas including the Economic and Social Research Council (ESRC), Leverhulme Trust and the UK Government's Department of Business, Energy and Industrial Strategy.

Members of the group have been actively involved in the provision of policy advice for public agencies including the Department of Justice and the Department of Health.

The group co-hosts the Network of Industrial Economists, a nationwide forum for interaction between academia, business and government on topics of industry economics. We hold the annual doctoral colloquium, an important forum for our PhD students to highlight and discuss their research.

Staff also play a leading role in the school's Centre for Research in the Behavioural Sciences. The Industrial Economics Seminar Series presents work by eminent economists from the UK and beyond. We also host the ESRC seminar series on Innovating for a Low Carbon Economy.

## Priority research areas

- Innovation
- Mergers and acquisitions, private equity, management buyouts
- Corporate governance and executive remuneration
- Credit market imperfections, financial markets and monetary policy
- Market entry, vertical integration and trade
- Behavioural and experimental economics
- Sports economics
- Health and lifestyle economics
- Industrial relations and labour economics

## Expert supervision

For details of potential supervisors, please visit [nottingham.ac.uk/business/phd/supervisors](http://nottingham.ac.uk/business/phd/supervisors)

"The Industrial Economics and Finance division provides us with weekly seminars attracting world-class researchers from many top universities. The quality of the seminars is high, which enables us to obtain greater insight about a research career and motivates us to improve the quality of our own work."

Jiannan Luo, PhD

# International business

This subject group brings together scholars whose work draws on a range of perspectives and methodologies to deliver value to academic and practitioner audiences.

Staff are committed to the advancement of world-class international business scholarship and to the development of ideas that will help managers make better sense of some of the most complex problems of globalisation and international business.

International business researchers have a reputation for their independent and forward-looking approach and often work with industry executives from leading companies to ensure research remains relevant for academics and practitioners.

Our research is funded by the British Academy, Japanese Foundation Endowments Committee, Sino-British Fellowship Trust, National Science Foundation of China, and Ningbo City of China, among others. We have close links with leading British multinational companies, Chinese government at various levels and leading Chinese companies.

Staff have published widely on issues related to:

- technology spillovers and transfers associated with foreign direct investment
- global network of R&D
- global strategic alliances
- internationalisation process
- the role of expatriates
- emerging market enterprises as sources of outward FDI and innovators
- leadership in emerging markets

Members' research has appeared in world-leading scholarly journals such as the *Journal of International Business Studies*, *Research Policy*, *British Journal of Management*, *Human Resource Management*, *Journal of Business Research*, *Management International Review*, and *International Business Review*.

Reflecting its eclectic disciplinary base, the group's approach to empirical inquiry covers a diverse range of methods, from econometric modeling at one end to case studies at the other. Their research also informs teaching across international business and other programmes.

## Priority research areas

- Globalisation of innovation
- Innovation and internationalisation of emerging market enterprises
- Internationalisation process linkage creations
- Leadership in emerging markets

## Expert supervision

For details of potential supervisors, please visit [nottingham.ac.uk/business/phd/supervisors](http://nottingham.ac.uk/business/phd/supervisors)

# Health management

This subject group is led by the Centre for Health Innovation, Leadership and Learning (CHILL).

It supports innovation and improvement in the organisation and delivery of healthcare by undertaking cutting-edge applied health research and supporting the translation of evidence into practice.

Through these activities, CHILL addresses the triple challenge of delivering high-quality, patient-centred and cost-effective healthcare, and is a leading centre of health improvement research and teaching.

It works in four main areas:

- Implementing and sustaining innovation
- Improving quality and safety
- Integrating caring organisations
- Service evaluation and qualitative trial support

CHILL has worked collaboratively with its partners to secure research funding and investment from:

- The Health Foundation: Improvement Science Fellowship and Improvement Science PhDs
- National Institute for Health Research (NIHR): PGAR, HS&DR, Collaboration for Leadership in Applied Health Research and Care (CLAHRC)
- Department of Health: PRP
- NHS England: Academic Health Science Networks, Patient Safety Collaborative
- Economic and Social Research Council
- Regional public, private and the third sector care providers

A founding member of the East Midlands Improvement Science Development Network, CHILL runs its own formal seminar series, co-hosted with the NIHR CLAHRC East Midlands' Implementing Evidence and Improvements theme. CHILL also has an informal seminar series for staff and doctoral students to learn from each other.

## Priority research areas

- Healthcare management
- Healthcare organisation
- Knowledge translation and health care improvement/implementation
- Improvement science
- Implementation of new technology in health care
- Patient safety
- Social movements and healthcare reform
- Innovation in primary care
- New service development

## Expert supervision

For details of potential supervisors, please visit [nottingham.ac.uk/business/phd/supervisors](http://nottingham.ac.uk/business/phd/supervisors)



“With CHILL, you have access to a wealth of expertise, with regular seminars and lunchtime events to hear local and national speakers share their work. As a nurse, a PhD in the Business School really broadened my thinking, I am able to focus on an aspect of healthcare, but also be challenged to think about the wider impact and transferability of what I am doing. I have been pushed to be my best at every stage, encouraged through my PhD, modules, and publications.”

Emily Gartshore, PhD

# Entrepreneurship and innovation

The school's research into critically analysing enterprise and entrepreneurial skills issues is led by The Haydn Green Institute for Innovation and Entrepreneurship (HGI).

It looks at innovation and understanding of the commercialisation of research as new venture creation, benefitting from endowed support from the family of a local entrepreneur, Haydn Green.

HGI promotes all forms of research, engagement, knowledge exchange and transfer relating to entrepreneurship and innovation. Its approach to encouraging and supporting top-quality doctoral researchers reflects this ambition, and it welcomes students seeking to advance understanding of innovative and entrepreneurial behaviour in society.

If you are interested in critically engaging with the theory and practice of entrepreneurship, innovation and creativity, our research environment offers expert support and supervision to develop analytical excellence in practical application and engagement with entrepreneurial ventures and innovative corporate activity.

HGI also offers excellent access to our community of practice through research seminars attracting leading academics, opportunities to engage with colleagues across other management disciplines, and public seminars with leading speakers from the private and public sector.

Staff have a broad range of research expertise and interests, including:

- new venture creation
- business incubation and growth
- social enterprise
- gender issues
- creativity
- entrepreneurship education
- media influences on entrepreneurial behaviour
- regulation
- finance and international entrepreneurship

In addition to academic expertise, HGI has well-established contacts with many corporate organisations such as Unilever, Syngenta, GSK and the NHS – as well as numerous small and medium-sized enterprises, and the University's campuses in China and Malaysia.

You will have full access to the Ingenuity Centre business incubator offering first-hand access to business creation and growth processes. Part of the University Enterprise Zone, the centre encourages research which examines the emerging community of technology entrepreneurs, academic entrepreneurs and social enterprises.

## Priority research areas

- Innovation and creativity in larger organisations
- Innovative management of change in the public sector
- International entrepreneurship
- Gender and entrepreneurship
- Entrepreneurship education
- Media influences upon entrepreneurial activity
- Social entrepreneurship
- Small firm finance

## Expert supervision

For details of potential supervisors, please visit [nottingham.ac.uk/business/phd/supervisors](http://nottingham.ac.uk/business/phd/supervisors)



“Alongside my doctoral studies, I have been recruited as a research and graduate teaching assistant, having co-produced two conference papers this term, with another paper and book chapter yet to come within my first year. The Business School has undeniably opened many doors for me, as I am fortunate to work alongside a group of leading scholars in entrepreneurship research and education.”

Samantha Hicks, PhD

# Strategy

This group is made up of experts in various aspects of strategic management in the public and private sectors and business and society relationships.

Drawing on a range of management disciplines, we have a strong commitment to conducting multi-disciplinary research that is rigorous and relevant. Our ideas help managers make sense of the complex challenges of globalisation of 21st-century management. We have particular interests in financial services, retailing, service industries, health service management, public policy decision-making and strategy in higher education.

We have received funding from various bodies such as the Economic and Social Research Council, Cabinet Office, National Health Service, and the Health Foundation. Our work is published in the world's leading management journals such as the *Strategic Management Journal*, *Academy of Management Review*, *Academy of Management Learning and Education*, *Organization Science*, *British Journal of Management*, *Organization Studies*, *Business Ethics Quarterly*, *Journal of Management Studies* and *Human Relations*.

Working towards the advancement of world-class strategy research, we collaborate with leading management and strategy scholars, for example, through the British Academy of Management and the European Foundation for Management Development.

We strive to involve practitioners in our research agenda and enjoy strong relationships with senior management in a range of leading companies and public sector organisations. We communicate our ideas through regular coverage in publications such as the *Financial Times*, *The Economist* and the *Huffington Post*.

Current research projects include:

- strategic management of innovation
- leadership in higher education and financial services
- strategy as a design science
- international strategic collaborations and alliances
- knowledge management and organisational learning
- inter-organisational collaborations
- responsible investment markets
- influence of metrics on organisational behavior
- institutional work
- institutional and organisational change
- corporate and public sector turnaround
- historical approaches to business and industry evolution
- business failure public engagement, and policymaking in the public sector

## Priority research areas

- Collaborative governance
- Public value
- Deliberative processes
- Campaigning and social movements

## Expert supervision

For details of potential supervisors, please visit [nottingham.ac.uk/business/phd/supervisors](http://nottingham.ac.uk/business/phd/supervisors)



“Nottingham University Business School has awarded me many things, including a research-intensive environment, a friendly network with PhD students from different disciplines, and accessible research grants for my experiments. After this PhD, I intend to continue my work in academia and I strongly believe that this PhD will be a cornerstone for my career.”

Kim Nguyen, PhD

# Human resource management – organisational behaviour

Undertaking research across the macro, meso, and micro level of organisational life, members of this group apply a range of approaches from sociology, organisational behaviour and psychology.

We hold a thriving research seminar series and have an exceptional track record of supervising PhD students. Our work is published in leading journals, including the *Journal of Management Studies*, *Management Science*, *Organization Studies*, *Human Relations*, *International Journal of Human Resource Management*, *Work, Employment and Society*, *Journal of Vocational Behaviour*, *Journal of Applied Psychology*, *Journal of Business Ethics*, and *Sociology*.

Group members have also published research monographs and text books with leading academic presses such as Oxford University Press, Cambridge University Press, Cornell University Press, Routledge, Sage and Palgrave-MacMillan. Members of the group have served on the editorial boards of notable journals such as *Human Relations*, *Journal of Management Studies*, and *Work, Employment and Society*.

## Priority research areas

- Africa-China business relations
- Change management
- Careers in emerging forms of organisation
- Entrepreneurial action and creativity
- Health services management
- International human resource management

- Migrant workers and employment relations
- Organisational sociology
- Organisation and management in developing and emerging economies
- Power and politics in organisations
- Public sector human resource management
- Service improvement/patient safety
- Sociology of interactive service work
- Trade unions and social movements

## Expert supervision

For details of potential supervisors, please visit [nottingham.ac.uk/business/phd/supervisors](http://nottingham.ac.uk/business/phd/supervisors)

“Every meeting with my supervisors is inspirational, with exceptional opportunities to challenge and be challenged in the way I think – that’s what Nottingham is all about.”

Shikder Moin, PhD





# Corporate social responsibility

**Our research combines the search for excellence, collaboration, multi-disciplinary, international and multi-actor approaches – and the exchange of corporate social responsibility (CSR) knowledge.**

Leading our research in CSR and sustainability, the International Centre for Corporate Social Responsibility conducts international multidisciplinary research.

The centre is dedicated to achieving research excellence, demonstrated by numerous contributions to distinguished management and social science journals, and more specialist business and society and business ethics journals. Staff provide research-led, evidence-based teaching that informs practice in business, government and civil society.

Our collaborative approach is reflected through numerous research partnerships and through our network of international visiting professors and fellows.

A great deal of the centre's research reflects intra-team collaboration and its multi-disciplinary approach is reflected in the academic backgrounds of staff: business ethics, environmental economics, social accountability, organisational sociology, international development, and political science.

The centre contributes to the exchange of CSR knowledge by organising conferences, annual symposia and research workshops throughout the year. It has developed a series of successful research partnerships with external organisations to develop or extend existing knowledge and enhance the understanding of CSR.

Collaborations have included FP7, HEFCE, CIMA, Charities Aid Foundation, British Council India, Indian Institute of Management, ERSTE SPARINVEST/VINIS, European Academy of Business in Society and ACCA.

## Priority research areas

- Rights and Responsibilities
- Sustainability and Justice
- Governance and Accountability

## Expert supervision

For details of potential supervisors, please visit [nottingham.ac.uk/business/phd/supervisors](https://nottingham.ac.uk/business/phd/supervisors)

# Marketing

**Home to one of the largest and most distinguished groups of marketing academics in Europe, the Business School has a well-established research track record in this area.**

Staff have strong links with the University's campuses in China and Malaysia, connecting staff with international researchers and offering distinct advantages to our doctoral students.

We have long-established expertise in services and relationship marketing and consumer research, as well as particular strengths in advanced techniques for business data analytics and finance and tourism marketing.

Our academics are leaders in their fields and many hold respected posts outside the University, including editorships of leading journals. We also receive funding from research councils, government departments, and business and non-profit enterprises.

## Priority research areas

- Consumer research and the dynamics between consumption, markets and society
- Value co-creation, consumer/customer learning and resource integration
- Product and service innovation management
- Services marketing, including financial services and tourism
- Networks and inter-firm relationships
- Advertising and communications
- Marketing metrics, analytics, behaviour and big data

## Expert supervision

For details of potential supervisors, please visit [nottingham.ac.uk/business/phd/supervisors](https://nottingham.ac.uk/business/phd/supervisors)

“Through regular meetings with accomplished supervisors and valuable training opportunities, I have found that the doctoral programme provides structure to the PhD process, while also allowing me to independently shape my own career path. A lot of emphasis is placed on the social aspect of research, and I have been actively encouraged to pursue publication opportunities and attend conferences.”

Sarah Glozer, PhD

# Operations management and information systems

**As closely related fields, operations management and information systems are vital to business across the public and private sectors.**

The Business School is an international leader in logistics and supply chain management research, with one of the UK's largest groups of operations management experts.

Operations management applies sophisticated methods to solving business problems in designing, planning, controlling and improving operations, and logistics and supply chain management processes. New information technologies which support these are continually evolving.

Our approaches to operations management research are wide and include behavioural and human factors methods, modeling and simulation, and analytical techniques of operations research. We have strong links with the University's Faculty of Engineering, running joint courses and research programmes.

Bridging the divide between computer science and business management, information systems incorporates a range of approaches for designing and applying information technology solutions to organisations.

Staff adopt an interdisciplinary approach, working to better understand the relationships between information systems including technology, virtual and physical work and organisation, and to develop new tools and methodologies for enhancing system design.

## Priority research areas

### Operations management

- Operations strategy
- Systems design
- Collaborative design and new product development
- Logistics and supply chain management
- Mass customisation
- Planning and control
- Outsourcing logistics and supply chains
- Quality management
- Modeling and simulation
- Technology and knowledge management

## Information systems

- Big data
- Information systems strategy
- Strategic alignment of information systems and business
- Human factors design of complex information systems
- Emotion and organisational change
- Open source innovation
- New technology in higher education
- Green computing
- Technological innovation and organisational learning
- Strategic management of inter-organisational networks, B2B network orchestration, complexity and systems theories

## Expert supervision

For details of potential supervisors, please visit [nottingham.ac.uk/business/phd/supervisors](https://nottingham.ac.uk/business/phd/supervisors)

“It's a very supportive, challenging and rewarding environment in which to carry out research. It is a truly transformational experience.”

Nick Barker, PhD



# Inspirational location

**The University's award-winning Jubilee Campus offers one of the most modern and beautiful environments in which to study business in the UK.**

Praised for its innovative architecture and environmentally friendly technology, it was first opened in 1999 by Her Majesty the Queen.

Built on a former industrial site close to Nottingham city centre, the campus has impeccable green credentials and is a leader in sustainable development. University Park Campus is just a mile away and you can easily get there on one of our free Hopper buses.

Jubilee Campus covers 65 acres and includes the YANG Fujia Building, a sports centre, the XU Yafen Building, with a restaurant, student services and multi-faith centre, and a scheme designed by Ken Shuttleworth (architect for the iconic Swiss Re building in London) that includes Innovation Park, the Aerospace Technology Centre, Energy Technologies Building, GlaxoSmithKline Centre for Sustainable Chemistry, Technology Entrepreneurship Centre, and the UK's tallest freestanding work of public art, Aspire.

## Dedicated facilities

The Business School provides full-time PhD students with a dedicated desk, computer, and locker space for your three years of registered study. Part-time PhD students are provided with hot-desking computer facilities.

The Exchange Building houses large lecture theatres with a shop and café opening onto a covered central atrium. The teaching buildings and the postgraduate hall of residence border a lake with a pedestrian walkway linking them.

As well as a range of facilities in our Business School North and South buildings, the Amenities Building includes a Graduate Centre, developed exclusively for postgraduates and early career researchers. It offers a range of facilities, including a seminar room that seats up to 30 people and can be used to practice presentations or hold seminars. There is also a lounge area with Wi-Fi, networked computers, and a well-equipped kitchen.

Our dedicated Business Library combines state-of-the-art multimedia technology with traditional information resources. It houses key reference resources, a short loan collection, past PhD dissertations, and a wide range of online resources, including financial and business data systems – Bloomberg, Datastream, Bankscope and Financial Times.

The Business School is based on the innovative Jubilee Campus, which has won awards for its environmentally friendly design – take a virtual tour at [nottingham.ac.uk/virtualnottingham](http://nottingham.ac.uk/virtualnottingham)



With over 45,000 students from more than 150 countries, two overseas campuses and strong relationships with institutions around the world, Nottingham will help you develop your international perspective and connect you to a global network of leaders, academics and fellow students.

## Sporting excellence

You can enjoy a variety of sports facilities and the Sports Centre on Jubilee Campus includes a large sports hall with basketball, tennis, netball, badminton and squash courts, practice rooms for martial arts and table tennis, plus aerobics and fitness classes.

Over on University Park Campus, the new £40m David Ross Sports Village offers an inspiring environment for casual players and elite athletes, with a fencing salle, martial arts dojo, indoor sprint track, the largest sports hall in the UK and the only university-based all-glass squash court.

## A support network built around you

We offer a network of services such as academic support, funding advice, and health and counselling services. Find out more at [nottingham.ac.uk/student-services](http://nottingham.ac.uk/student-services)

We also provide a range of additional support services for international students. For more information, visit [nottingham.ac.uk/international](http://nottingham.ac.uk/international)

**6**  
**Green Flag awards**

setting the benchmark for parks and green spaces

Libraries offering **over 4,500 study spaces**

including dedicated postgraduate study rooms



# A city with a pioneering spirit

**Nottingham is regarded as one of the UK's most desirable places to study. Home to a world-class University, it offers all the buzz of city living while retaining its strong sense of community.**

Both Jubilee and University Park Campus are close to the centre of Nottingham, one of the UK's most cosmopolitan and prosperous cities. As the commercial and cultural capital of the East Midlands, it is home to many large blue-chip companies and prominent organisations. The Business School has strong links with many of them including Walgreens Boots Alliance, Experian, Capital One, E.ON, the Inland Revenue and Rolls-Royce, based about 14 miles away in Derby.

Nottingham is renowned for its excellent nightlife, with more than 300 places to eat and drink as well as, clubs, theatres, concert halls and cinemas. If you enjoy shopping, there are independent boutiques and vintage shops as well as high street names in our large shopping centres.

With more sports facilities per head than anywhere else in Europe, the city is England's official Home of Sport, offering some of the country's top facilities such as Trent Bridge cricket ground and the National Water Sports Centre.

Nottingham is an old city with a rich history – you can explore the ancient caves beneath Nottingham Castle, or take a relaxing walk through Wollaton Park and visit its imposing Elizabethan Hall. The region benefits from beautiful rural scenery in the Peak District National Park, while Nottinghamshire's more well-known attractions include Robin Hood's Sherwood Forest and the historic Goose Fair, held every October.



**Nottingham is ranked in the top 100 universities worldwide**

QS World University Rankings 2019



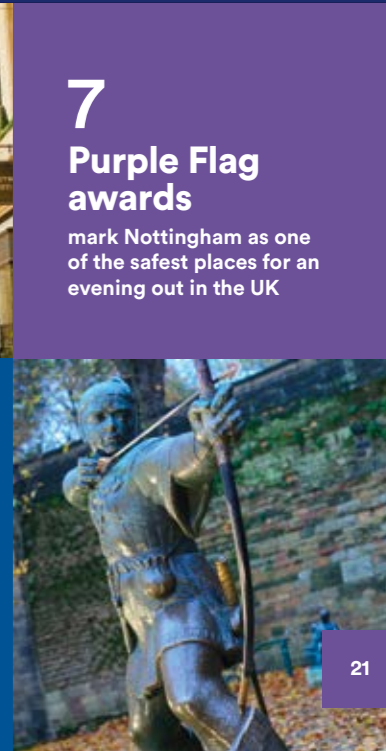
## Time to travel

Getting here is easy. Nottingham is less than two hours from London, with excellent transport links to the capital and the rest of the UK.

East Midlands Airport, one of the UK's fastest growing airports, is only 40 minutes from the city centre via a 24-hour bus service.

Birmingham International Airport is less than one hour from Nottingham by car.

Frequent rail services run from Nottingham to major UK cities, including London every 30 minutes. The Eurostar connection at St Pancras International in London allows you to travel from Nottingham to Paris or Brussels in just a few hours.



## 7 Purple Flag awards

mark Nottingham as one of the safest places for an evening out in the UK

# Funding your potential

**We are proud to offer our researchers an extraordinary level of support including funding for excellent students.**

## Tuition fees

For the most up to date fee information, visit [nottingham.ac.uk/fees](https://nottingham.ac.uk/fees)

## Funding your studies

Each year, the Business School offers a number of scholarships covering EU tuition fees only as well as tax-free living expenses. These are available to home, EU and international applicants.

The Business School also offers Alumni Scholarships to reward high-quality alumni who are considering applying to the PhD programme. These scholarships offer a discount on Home/EU or International tuition fees.

For the most up to date information visit [nottingham.ac.uk/business/phd/finance](https://nottingham.ac.uk/business/phd/finance)

## ESRC studentships

Nottingham is part of the Midlands Graduate School, one of 14 accredited Economic and Social Research Council (ESRC) doctoral training partnerships. It provides a number of studentships each year, covering tuition fees and a maintenance stipend (subject to eligibility) as well as extensive support for research training including grants.

The studentships are available to UK and EU applicants who meet the academic and residency eligibility criteria. You must have an offer for doctoral study to apply and should indicate that you would like to be considered during the application process. Find out more at [nottingham.ac.uk/esrc-dtc](https://nottingham.ac.uk/esrc-dtc)

## International scholarships

The University offers a range of international scholarships, which are specific to countries or regions. For more information, visit [nottingham.ac.uk/go/research-scholarships](https://nottingham.ac.uk/go/research-scholarships)

## Guidance for international students

For guidance on living costs in the UK, managing your budget, how to open a UK bank account, and information on sponsored students, please visit [nottingham.ac.uk/go/international-finance](https://nottingham.ac.uk/go/international-finance)



# How to apply

## Entry requirements

Applicants must have a 2:1 or higher honours degree in a social science, and a master's degree which includes a substantial research element, with a score of 65% or above in the taught modules and 65% or above in the dissertation. In exceptional cases, substantial professional, business or industrial qualifications/experience may also be considered.

You will need to enclose academic transcripts. If you are currently studying your masters, you should include a transcript of the marks you have received to date. Any offer is conditional upon achieving the required standard.

## Research proposal

All applications must include a research proposal. This indicates the area in which your research will be conducted and the key issues you would like to examine. You will need to demonstrate that you understand your chosen area and what postgraduate research entails, and have identified an interesting and original research question.

Acceptance will be based on your academic ability and the availability of suitable supervisors. The quality of your research proposal is extremely important and is a crucial part of the application process. If potential supervisors are identified, an interview will be carried out either in person or over the phone before any formal offer is recommended.

Before you apply, visit our website for a list of available supervisors, research interests and recently completed doctoral theses, so you can determine whether your interests match. Find out more at [nottingham.ac.uk/business/phd/apply](https://nottingham.ac.uk/business/phd/apply)

## Application deadline

There is no firm closing date for applications, but we recommend you apply by July for an October start date.

## EU and international applicants

At Nottingham, our global community is made up of staff and students from more than 150 countries. Staff regularly travel to meet prospective students, hosting events in China, Ghana, India, Malaysia and more. Find out more at [nottingham.ac.uk/go/countryevents](https://nottingham.ac.uk/go/countryevents)

If you need a visa to study, the University can provide all the information and advice you need. Find out more at [nottingham.ac.uk/go/student-visa](https://nottingham.ac.uk/go/student-visa)

For country-specific information including entry requirements, contact details and representatives, see [nottingham.ac.uk/go/yourcountry](https://nottingham.ac.uk/go/yourcountry)

## English language requirements

For applicants whose first language is not English, we require IELTS 7.0 (no less than 6.0 in any element). For more information and a list of the alternative English language requirements we accept, see [nottingham.ac.uk/go/alternativerequirements](https://nottingham.ac.uk/go/alternativerequirements)

## Academic English preparation and support

Accredited by the British Council for the teaching of English in the UK, the University's Centre for English Language Education provides high-quality preparation and support. Our pre-sessional courses take your English language and academic skills to the level you need to progress to doctoral study without taking IELTS again. Find out more at [nottingham.ac.uk/cele](https://nottingham.ac.uk/cele)

## Home from home

We guarantee all new postgraduate students University-arranged, single-occupancy accommodation for one year to help make your move to Nottingham as simple and stress free as possible. To qualify for the guarantee, you must accept a place on one of our postgraduate courses and apply for accommodation by the date specified on our website. Find out more about our accommodation, including details of our guarantee at [nottingham.ac.uk/accommodation](https://nottingham.ac.uk/accommodation)

## Equal opportunities policy


The University aims to create the conditions whereby students and staff are treated solely on the basis of their merits, abilities and potential, regardless of gender, race, colour, nationality, ethnic or national origin, age, socioeconomic background, disability, religious or political beliefs, trade union membership, family circumstances, sexual orientation or other irrelevant distinction.

## Identifying a supervisor

Before you apply, you need to make sure that we have a supervisor who shares an interest in your proposed area of research. For details of potential supervisors, please visit [nottingham.ac.uk/business/phd/supervisors](https://nottingham.ac.uk/business/phd/supervisors)



**For PhD enquiries contact:  
Student Recruitment Support Hub**

 +44 (0)115 951 5559

 [nottingham.ac.uk/contact](https://nottingham.ac.uk/contact)

 UoN.NUBS

 @NottmUniBSchool

**[nottingham.ac.uk/business/phd](https://nottingham.ac.uk/business/phd)**

This publication is available  
in alternative formats:

+44 (0)115 951 5559

