



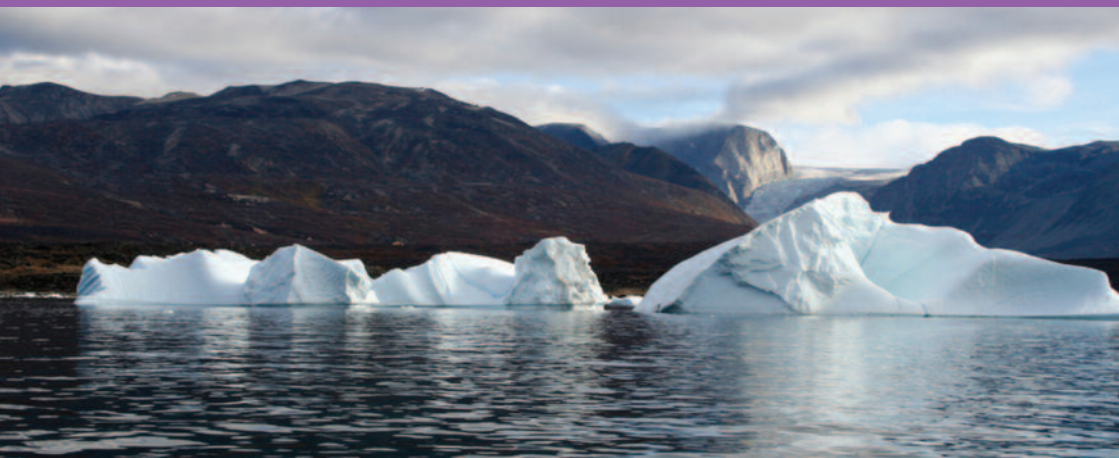
The University of
Nottingham

Geography

www.nottingham.ac.uk/geography

Undergraduate Studies

Contents



<u>Welcome</u>	<u>03</u>
<u>Why The University of Nottingham?</u>	<u>04</u>
<u>Why geography at Nottingham?</u>	<u>06</u>
<u>Geography honours degree courses</u>	<u>08</u>
<u>Student profile</u>	<u>10</u>
<u>Teaching and learning</u>	<u>11</u>
<u>Studying abroad</u>	<u>15</u>
<u>Applying for a place</u>	<u>16</u>
<u>Careers and employment opportunities</u>	<u>18</u>
<u>Contacting us</u>	<u>19</u>

Welcome to the School of Geography



The University of Nottingham's School of Geography is one of the strongest both nationally and internationally. Geography has been taught at Nottingham since the late 19th century and Nottingham's Geography honours programme was established over 70 years ago.

The School is based on the attractive University Park Campus, close to the libraries, Students' Union facilities and halls of residence. It has a strong commitment to active learning, with students invited to participate in tutorials, class discussions, group activities and field courses. This allows you to develop the skills required for a rewarding career.

The School has an innovative approach to teaching and is a stimulating place in which to learn and research. Members of academic staff are leading international researchers in their specialist fields, and together cover the range of human and physical geography.

This research underpins our teaching, meaning the latest developments are incorporated into lectures and seminars. The School's dynamic approach to teaching will ensure your experience at Nottingham is exciting and challenging. Full details about the School, its staff, students and activities are provided on our website: www.nottingham.ac.uk/geography

I wish you every success in your studies.

Professor Sarah Metcalfe
Head of School

Why The University of Nottingham?



Nottingham Castle

Students choose The University of Nottingham for a whole host of reasons. If it's academic excellence you're looking for then Nottingham is the place for you. Renowned internationally for top-class teaching and groundbreaking research, the University is respected worldwide and offers fantastic facilities to ensure you make a success of your studies.

In independent teaching assessments, 39 of our subjects have been rated excellent (with scores of at least 22 out of 24), and our scores in the latest Research Assessment Exercise put Nottingham among the top universities in the UK for carrying out research of international importance.

If you're more interested in great career prospects, then we can help with that too. Nottingham is one of the top three UK universities most often targeted by Britain's leading graduate employers and the employment record of our graduates is one of the best in the country. We have strong and established links with businesses across the UK and offer short courses to ensure you develop vital transferable skills. For entrepreneurial students we provide business start-up training to help you gain the skills you need to set up your own business after graduation.

We also encourage all our students to build a broad range of skills that will appeal to employers. We have one of the most active Students' Unions in the UK, with over 170 societies where you can gain new skills, meet new people and even learn a new language.

If you want to broaden your horizons and see the world, we offer great study abroad opportunities. Nottingham is a global institution with around 30,000 students from over 150 countries, and more than 270 partner universities in 35 countries. As a result, nearly every Nottingham undergraduate has the opportunity to apply to spend time abroad during their time at Nottingham.

For a great social life and an exciting city, Nottingham fits the bill again. Our campuses are buzzing with life, with organised events, trips and parties taking place throughout the year. For sports fans, our Athletic Union hosts over 75 clubs and we provide excellent facilities for everything from football to bowling. Nottingham itself is a thriving cosmopolitan city, rich with history and culture, and packed full of bars, restaurants and nightclubs for you to enjoy. With theatres, cinemas, comedy clubs and a diverse mix of music venues, there is always plenty to keep you entertained.

To help you settle in, we guarantee all undergraduates a place in University-arranged accommodation so your move will be simple and stress-free. Your room will be on, or close to, campus and you'll be able to meet new people, make new friends and enjoy university life. So why not make your next step Nottingham?

“Nottingham is great for shopping, restaurants and nightlife. There’s a lively and mixed social scene here and it’s very student friendly.”

The Guardian University Guide 2008

Why geography at Nottingham?



Trent Building, University Park

Our reputation

Geography at Nottingham is continually ranked highly in independent league tables, and teaching in the School was rated 'excellent' in the Quality Assurance Agency's latest independent assessment of teaching quality. The School has grown steadily over recent years and we currently have around 550 undergraduates.

The student experience and degrees

The School of Geography is committed to excellence in both teaching and research in an environment where students and staff are valued members of a dynamic academic community. We aim to equip graduates with a broad understanding of the world, strong personal and interpersonal skills, an ability to synthesise both quantitative and qualitative information, and the intellectual capacity to produce original and thoughtful interpretations of our ever-changing world.

There are currently 36 members of academic staff who undertake a range of undergraduate and postgraduate teaching, plus research and administration. We also have a large team of support staff and administrators who ensure the smooth running of the School. Particular strengths of our undergraduate teaching programme include small group teaching, tutorials and seminars, practical and laboratory classes and fieldwork.

The structures of our degrees are flexible and there is a wide range of module choices available to our undergraduates to cater for most interests within geography. We promote an informal, supportive and productive atmosphere within the School which is renowned for the pastoral care we offer students. Almost 90 per cent of our students graduate with either a first class or upper second class honours degree.

"I enjoyed learning from some of the best geographers in the world. The friendly, informal and well established geography department provided a welcoming, comfortable environment which I very much enjoyed for three years."

BA Geography graduate

Graduation statistics 2006-2008

	1st	2.1	2.2	3rd	Total*
2006	15.0%	78.0%	6.0%	1.0%	158
2007	11.7%	77.2%	11.1%	0.0%	171
2008	15.1%	78.0%	6.3%	0.6%	159

* Total successful leavers (drop out rate is less than 2%)

Facilities

The School is located on University Park Campus. Commonly regarded as one of the most attractive university campuses in the UK, University Park offers a wide range of facilities including a swimming pool and sports centre, playing fields, restaurants, bars, shops and high quality halls of residence. The School shares the large and well-equipped Sir Clive Granger building with the School of Economics. In addition to lecture theatres, seminar rooms, a coffee bar and meeting areas, the School provides a range of more specialised facilities:

- **The David Ebdon Computing Laboratory**
This state-of-the-art facility houses 95 high specification PCs for use exclusively by geography students. The lab is open 24 hours a day, seven days a week.
- **The Graduate Computing Laboratory**
This laboratory houses more sophisticated and powerful computing resources for advanced geographical studies and, particularly, for GIS. Computers are equipped with state-of-the-art software capable of three-dimensional modelling of geographical spaces and terrain systems, and satellite image processing.

- **The Edwards Resource Centre**

This large facility acts as the primary undergraduate resource room. It holds the University map collection plus a wide range of atlases, gazetteers and almanacs for reference use. PCs are available for internet access and viewing DVDs and CD-ROMS. There are also large amounts of 'grey literature' and teaching support materials, which are constantly updated and replaced.

- **The Swinerton Undergraduate Laboratory**

In 2003, the University made a major investment in opening a brand new, custom-built laboratory to support practical and project work by undergraduates studying physical geography.

- **The Cuchlaine King and Environmental Change Research Laboratories**

These Laboratories provide advanced research facilities, focused on the physical and chemical analysis of components of past and present environments. They can be accessed by undergraduates as part of their dissertation work.

Geography honours degree courses

“The course is both broad and challenging, particularly some of the core modules, which were surprisingly rewarding (eg statistics). Geography students have always worked well together in different groups – the course is highly sociable.”

BSc Geography graduate

All our full-time undergraduate degrees are three years in duration, except Geography with East European Studies which involves an extra year abroad. All the degrees can be undertaken on a part-time basis; the degree programme remains the same but is spread over five to seven years.

BA/BSc Geography (UCAS code L700/F800)

The single honours Geography course offers a broad and flexible programme of study which equips graduates with the necessary skills of analysis and synthesis to critically understand information from a wide range of sources. The first year is a foundation programme covering human and physical geography and geographical information science. Students are encouraged to choose any optional modules they wish at the appropriate level from across the University. Many opt to study languages, the social and natural sciences, or engineering, in addition to modules offered by the School of Geography.

BA Geography with Business (UCAS code L7N1)

This course is taught jointly by the School of Geography and the Nottingham Business School, which is located on the award-winning Jubilee Campus. It caters for the growing demand from both the business and environmental sectors for graduates with an awareness of the economic, political and social issues surrounding the environment, policy and management.

BA Geography with Chinese Studies

(UCAS code L7T1)

Geography with Chinese Studies at Nottingham provides students with an exciting opportunity to learn about the rapid transformations currently taking place in China. The course is designed to facilitate progressive learning, with key and transferable skills being important aspects of the training provided. In addition to participating in a field course to China, students may opt to learn Mandarin, and are encouraged to focus their dissertation on a China-related topic. Flexible optional pathways allow specialisation in both geography and Chinese studies, allowing students to tailor their course towards potential career opportunities in, or in an area related to, China.

BA Geography with East European Studies (UCAS code L7RR)

The single honours Geography with East European Studies course offers a broad and flexible programme of human geography with either Russian, Slovene or Serbo-Croat. Graduates of this four-year degree, offered in conjunction with the School of Modern Languages, are equipped with the necessary skills of analysis and synthesis to critically understand information from a wide range of sources. Students usually spend the third year at a university in the country of their specialist language.



“This new course is well structured, and that helps me to learn. I’m learning Mandarin while studying about China and Chinese culture, which has added great variety to my degree.”

Geography with Chinese Studies
First year student





Student profile

Holly Derry-Evans

Course and year of study:
Geography, third year

"I first came to visit the University with my parents and immediately fell in love with the campus. Nottingham offered geography modules that I was interested in and a lot of the academic staff were working on research that reflected my personal interests, so I felt that they would be enthusiastic about what they were teaching.

I really enjoy the diversity of modules offered on this course. By the second and third year, you have a lot more choice to tailor the degree to your requirements – this year, for example, I am studying food and fashion, China, energy, and rural affairs, so you can see the scope on offer.

In my second year, my favourite module was 'The Development of China' and this year it's 'The Geographies of Food and Fashion', which is relevant to my dissertation. Over the summer, I went to Honduras to assess the impacts of a Fairtrade scheme on the local community. My dissertation will be based around these findings.

Beyond your course, I think it's really important to build up a range of experiences for your CV. In my spare time, I volunteer at the Crocus Cafe, which is a community-run cafe that sells ethical vegetarian food, employs disadvantaged kids from the local community and works with people with mental health problems.

When I have the time, I also write and submit articles for the Sanctuary newspaper and Impact magazine, both student publications. It's a good feeling to write something that doesn't have a mark attached to it!

I am now beginning to think about my future career and have been to the Centre for Career Development to collect brochures about the top 100 corporate companies. Buying, human resources, advertising and publishing all interest me and I am confident my degree has given me the skills I need to pursue a career in one of these areas."

Teaching and learning

“The best thing about Nottingham’s geography degrees is the continuity of modules from year to year. The pathway approach allows development of skills in specific subject areas. There is a wide variety of topics and a good choice of modules.”

BSc Geography graduate



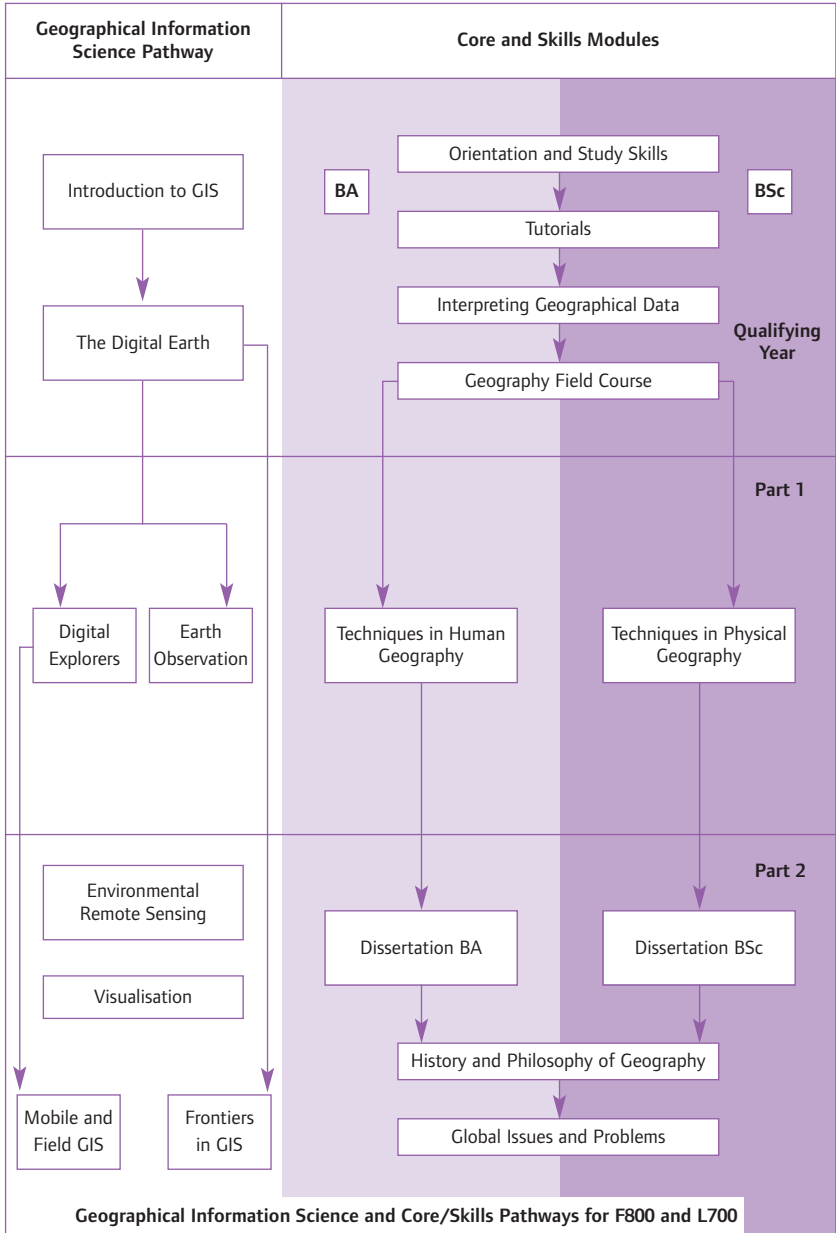
Degree course structures and content

The three years of the degree courses comprise respectively the qualifying year, part 1 and part 2. Only marks for part 1 and part 2 contribute to the degree and are weighted in the ratio 35:65.

All degree courses have a compulsory core/skills component (pathway) which is taken over the three years of study. However, the hallmarks of the geography degree structures at Nottingham are their breadth and flexibility. The qualifying year acts as a foundation programme and for single honours gives equal emphasis to human geography, physical geography and geographical information science. The geography “with” degrees have similar modules in their associated disciplines.

In part 1 and part 2, students may choose to specialise in particular fields or maintain a balance of interests. This flexibility is achieved via a number of optional pathways (Regional Geography, Economic Geography, Medical Geography, Urban Geography, Environmental Geography, Cultural Geography, Biogeography, Environmental Change, Fluvial Studies, Dry Regions Studies and Geographical Information Science).

Single honours students can follow up to five optional pathways in part 1 and part 2. Again, the geography “with” degrees are a little more prescribed with regard to optional pathways than the single honours degrees to allow for learning in the associated disciplines.



Since the courses are modular, there is some freedom to select from a wide range of modules both from within geography and more broadly across the entire University. Pathways are not necessarily prescribed by the degree for which you are registered. Taking a single honours BA degree, for example, does not preclude you from specialising in the more environmental side of the discipline, nor from opting for some physical geography modules throughout your three years.

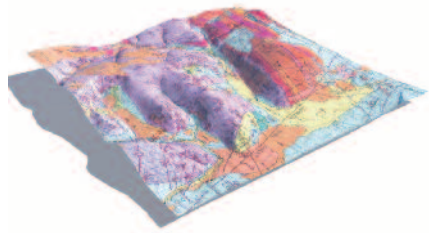
Exploring Human Geography					Qualifying Year
Regional Geography Pathway	Economic Geography Pathway	Medical Geography Pathway	Urban Geography Pathway	Environmental Geography Pathway	Cultural Geography Pathway
Environment and Development in China	Economic and Urban Geography	Medical Geography	Economic and Urban Geography	Rural Environmental Geography	Cultural and Historical Geography
			↓	↓	↓ Part 1
	Geographies of Money and Finance Geographies, Fashion and Food		European Urban and Regional Geographies	Landscape History of Liguria	Cultural Geography of English Landscape Geo-graphies of Violence
					Part 2
Human Geography Pathways for F800 and L700					

Earth and Environmental Dynamics				Qualifying Year
Biogeography	Environmental Change	Cold Regions Studies	Fluvial Studies	Dry Regions Studies
Patterns of life	Environmental Change	Impacts of Glaciations	River Channel Forms and Dynamics	Desert Geomorphology
↓	↓	↓	↓	↓ Part 1
Landscape Ecology and Environmental Management Ecology, Conservation and Management	Quaternary Environments		River Channel Management and Restoration	
				Part 2
Physical Geography Pathways for F800 and L700				

For access to details of all course structures and modules visit: www.nottingham.ac.uk/geography

“The staff in the School are great – really supportive and approachable. They listen to and consider your ideas and opinions.”

BA Geography graduate



Academic and pastoral support

The general ambience in the School is one of informality. This allows our students to study in an enjoyable yet supportive and productive atmosphere. All new students are assigned a member of staff as a personal tutor. In the qualifying year, the personal tutor also acts as an academic tutor to facilitate small group discussions, set and mark individual work and advise on any academic problems. Students meet with their personal tutor throughout the three years of study to discuss academic and personal development, including feedback from examinations and other assessments, and choice of optional modules. One outcome of these meetings is a PAR (Personal and Academic Record) which can contribute to the development of your CV.

Student representatives from each academic year also take part in regular meetings where they are free to discuss modules, courses and all aspects of school life. The quality of modules and teaching is continually monitored through student feedback questionnaires. These activities ensure that undergraduate interests are fully represented.

Teaching methods and assessment

In the undergraduate programme, the emphasis is placed on teaching via a range of methods and approaches. Small-group teaching is important, and includes seminars, tutorials, laboratory, practical and field classes. All students attend a residential field course in year one, currently held in the Lake District. There are a number of field courses throughout years two and three depending on your module choices. Currently, these include residential trips to Paris, Liguria (Italy) and China, along with specific trips to study coasts, rivers, the city and environmental issues in various parts of the UK.

We use a wide range of assessments including formal examinations – multiple choice and essay style – essays, project reports, lab reports, field books, posters, oral presentations in seminars, video presentations and a 10,000 word dissertation. The School awards two PricewaterhouseCooper Travel Scholarships annually to support dissertations undertaken overseas. Overall, most of our graduates will have experienced about 60 per cent coursework and 40 per cent examination assessments.

Studying abroad

"I visited New Zealand during my second year and spent a semester studying at the University of Auckland. It was the most amazing experience of my life and I would totally recommend anyone considering participating in the Universitas 21 programme to just go for it!"

BA Geography
Second year student



Currently, students in the School of Geography can participate in two study abroad programmes – Erasmus and Universitas 21.

Erasmus programme

The Erasmus programme is a European-wide initiative where exchange agreements are made between specialist schools at Nottingham and their counterparts at partner institutions.

The School of Geography is linked with three European partner institutions: Seville, Grenoble and Eichstatt.

Universitas 21

The Universitas 21 programme involves more than 20 partner institutions worldwide including Auckland, Melbourne, Queensland, University of British Columbia, McGill in Montreal, Hong Kong and Singapore.

Participation on these programmes normally takes place in the autumn semester of the second year.

Places on the scheme are competitive and students will be selected according to their progress on the course so far.

Applying for a place



Admissions procedures

We are looking for students who have the ability and motivation to benefit from the courses we offer and who will make a contribution to the School and the University. All applications are considered equally on merit; students are usually selected on the basis of academic excellence and personal qualities. We do not rely on predicted grades alone, and aim to take into account the broader context of each applicant's achievements, primarily as reflected by their personal statement and reference.

Applicants are not routinely interviewed. All those offered a place will be invited to an open day. The aim of the visit is for you to ensure that Nottingham meets your perceived needs and aspirations. In addition to a formal presentation, which provides details of the courses we offer, you will also be able to meet members of the teaching staff and, very importantly, some current undergraduates.

Entry requirements

In assessing applicants, the School is looking for evidence of an enthusiastic interest in geography coupled with strong academic performance (typically AAA/AAB at A2 level). For Geography with East European Studies, a language at AS level is required. We also accept GNVQs, Scottish Highers, Welsh Baccalaureate and International Baccalaureate qualifications. As an example, a typical offer for International Baccalaureate candidates would be in the range of 34-36 points, including a grade 6 or above in geography.

We welcome applications from students who do not fit the standard entry requirements, including mature students. These applicants may be invited for interview.

Widening participation

The School of Geography encourages applications from academically able students of all backgrounds, including those that might not have taken a traditional route to university or students from families where higher education might not be the norm. The School is involved in the University's Widening Participation Scheme and takes a prominent part in the University's two summer schools for widening access students (HEFCE and Sutton Trust). If you think you might qualify under the Widening Participation Scheme (eg you're the first in your family to attend university, you're a mature student, or you're from the local region) please view the student support section on the University's website for more information or write to the Admissions Tutor in the School of Geography. Widening participation candidates may be invited to an interview.

Deferred entry

We are normally happy to consider applications for deferred entry.



Support for students with disabilities

The School of Geography welcomes applications from all students. We aim to provide a high level of support and guidance from the moment you first enquire through to graduation. We encourage students to disclose any disability that they may have, and to do so as early as possible so that appropriate arrangements for support can be made. This information can be kept confidential, depending on the wishes of the student. The School of Geography has a Disability Liaison Officer who advises students on the support available within the University.

For details of the support on offer, please see: www.nottingham.ac.uk/student-support/disability

International applicants

We welcome international applications. For further information about all aspects of life at The University of Nottingham go to www.nottingham.ac.uk and click on Undergraduate Study on the home page.

Careers and employment opportunities

“The best thing is that the whole course has provided me with the skills required to reach my potential in my chosen career.”

Graduate trainee in finance
Geography graduate



The broad sweep of geography as a discipline, and the range of options available within the undergraduate programme at Nottingham, ensure that geography graduates have a wide range of career opportunities open to them.

Nottingham geography graduates are increasingly popular with a wide range of employers who appreciate the range of personal and transferable skills that they offer, such as team work, field work, presentation skills, technical abilities, numeracy, computer and literacy skills.

A number of graduates stay on at university to study for a higher degree (MSc/MA/PhD).

Others enter cognate professions such as consultancy, public service, law and teaching (examples here include environmental consultants, law conversion courses, and PGCE courses). Some students enter media organisations (BSkyB, Beyond Interactive, Mosquito, Research International), finance and consultancy firms (HSBC, Ernst and Young, Baker Tilly) and the IT sector (IBM, SEMA Group).

Many opt for graduate employment careers in blue chip organisations such as Boots, BA, Marks and Spencer and BP, while some enter the voluntary sector or work overseas in development or aid organisations. Our record over 70 years demonstrates that there are no boundaries to what our graduates achieve or the career paths that they choose to pursue!

Contacting us

For further information about our courses and entry to the School, please contact:

The Admissions Secretary
School of Geography
University Park
Nottingham
NG7 2RD

t: +44 (0)115 951 5428/5429
f: +44 (0)115 951 5249
e: ugadmissions@geography.nottingham.ac.uk
w: www.nottingham.ac.uk/geography

For international student enquiries, please contact:

The International Office
t: +44 (0)115 951 5247
f: +44 (0)115 951 5155
e: international-office@nottingham.ac.uk



The University of
Nottingham

For general undergraduate
enquiries contact:

The Enquiry Centre
The University of Nottingham
University Park
Nottingham
NG7 2RD
UK

t: +44 (0)115 951 5559
f: +44 (0)115 846 8062
e: undergraduate-enquiries@nottingham.ac.uk
w: www.nottingham.ac.uk