

Welcome Guide



2015–2016



Discover **Shape** Belong

Students' Union
UNIVERSITY OF NOTTINGHAM

Welcome to life on Sutton Bonington!

This is your guide to everything you need to know about life on Sutton Bonington (SB). Whether you're a new or returning student we suggest you check out the information to ensure your year starts off in the finest way possible.

Read on to learn more about your Guild and Students' Union, get acquainted with your Guild Officers and Hall Reps and discover the kind of events you can expect to see over the next year. You can also find out how to get involved in societies, sports clubs and volunteering opportunities.

There's also some important sections dedicated to healthcare, well-being, local amenities and useful contacts. Keep the guide safe and you'll never be left wondering where to go, who to talk to or how to fill your free time!

P.S. Download the UoNSU Welcome App, we promise you won't miss a trick!

.....
When you arrive check out the Welcome and Activities Guides to find out how you can get involved in your Students' Union
.....

DON'T MISS OUT ON ANY OF THE ACTION. FOLLOW @UONSU AND TWEET US WITH #UONFRESHERS TO SHARE YOUR STORIES!

The Guild

~~~~~  
🐦 @SB\_GUILD  
📘 SUTTON BONINGTON GUILD

## SB Events

.....  
🐦 @SB\_ENTS  
📘 SBENTS

# Welcome from your Guild chair

.....

Firstly, I would like to congratulate everyone who is making the exciting journey to SB as a first year in September, your hard work has clearly paid off! Secondly (and by no means least) I would like to say welcome back to everyone who is returning to SB. It may seem daunting as all of your work so far has led to this, but I can assure you, the week we have planned to welcome you is truly amazing!

Over the last year the campus has seen a flurry of activity. We've celebrated the opening of the new Barn, been treated to loads of new events (alongside old favourites) and seen new societies get off to a flying start. Alongside this, your new Guild Officers have settled in really well and are raring to make your SB experience the best it can possibly be.

(Turn to page 6 to find out more!)

This booklet acts as your reference point for Welcome. If you're unsure of where to go, who to speak to or are just wanting to find out what's going on, the information is probably in here. But you can always drop one of the Guild Officers or Welcome Mentors an email, we're always happy to help!

We're here to guide you through the whirlwind that is Welcome, help you find your feet and take advantage of what is available, so please feel free to grab us for a chat!

Again I would like to say welcome to Sutton Bonington Campus and assure you that these next 3, 4 or 5 years will be the greatest you have ever had! The Guild and ENTs team hope you enjoy everything we have planned for the year ahead!

**James Wilson**  
Sutton Bonington Guild Chair

## The Guild



Sutton Bonington is the home of the Schools of Biosciences and Veterinary Medicine & Science. Set 12 miles from the central University Campus in the beautiful Nottinghamshire countryside, life here – though amazing – can be a little different to that at University Park.

That's where the Guild comes in. The moment you become a student of the University at SB, you automatically become a member of both the SB Guild and Students' Union.

The Guild is your very own facet of the Union led by a brilliant team of part-time student officers and it's there to deliver events, activities and support tailored to your needs.

The Guild also works as your gateway to Students' Union networks and services, ensuring you feel as included as possible in life at Nottingham.

If you're interested in how the Guild works, are wanting input or are looking for support, get in touch with your Guild Officers. Turn to pages 6-9 to meet them!

# Guild Officers



Now you're clued up on what the Guild is and what it can offer you, it's time to meet your Officers.

The Officers, who are current students, hold their positions part-time and are here to support and represent you. They campaign on the issues you care about and work hard to ensure you have a fantastic time while studying here at Sutton Bonington.

## James Wilson

Guild Chair  
[os-susbgc@nottingham.ac.uk](mailto:os-susbgc@nottingham.ac.uk)

Hi I'm James, alongside being Guild Chair, I am also in my third year as an Animal Science student. In my second year I was an ENTs officer so had a lot to do with the massive variety of events that take place on Campus. As Guild Chair I am SB's representative to not only the University and the Union but to all aspects of the campus and its surrounding community.

They also provide a link between SB and the Students' Union by working with the full-time Officers at University Park to ensure you are properly represented and have access to all the same activities and services.

If you want to get involved this year it's not too late! We host our Hall Elections in November during which the Hall President, Female Welfare and Male Welfare Officer positions all re-open. Keep your eyes open for updates!

## Jess Watson

Guild Treasurer  
[syjjw7@nottingham.ac.uk](mailto:syjjw7@nottingham.ac.uk)

Hello I'm Jess and I am your Guild Treasurer this year. It is my role to make sure there is enough money in the right places to make sure we have the best year on SB.



### **Rebekah Mondon**

Guild Vice-Chair  
styrkm@nottingham.ac.uk

Hi my name is Bek and I'm in my third year as an Animal Science student. As Guild Vice-Chair I look after elections and Guild procedures as well as assisting the Guild Chair in his role. I am also a point of contact for all students on campus. I'm looking forward to meeting you all in September!

### **Lai Wah Tsang**

Hall President  
stylwt@nottingham.ac.uk

Hi! I'm Lai Wah (Lay Warh), a second year Dietetics student and your Hall President! I work closely with the Guild as well as our ENTs team to ensure you guys are having the best experience living on Campus. That can be anything from accommodation with CLV, catering with Sodexo, the student services we offer and not forgetting the social events we organise for you! Feel free to say hi and stop me for a chat when you see me around campus!

### **Rachel Ellis**

Equal Opps & Welfare Officer  
svyre@nottingham.ac.uk

Hi, I'm Rachel. My role involves working for the welfare of everyone on campus, by liaising with welfare services and directing students to the best place to find support. I also work with cultural, faith and minority groups on campus to ensure that they are supported and everyone, regardless of their background, is in a position to enjoy life on SB.

### **Harry Dance**

Campaigns Officer  
svybd3@nottingham.ac.uk

Hello, I'm Harry, your Campaigns Officer for this year. I am a third year Vet student living in Kegworth. Last year I was the Equal Opportunities and Welfare Officer for the Guild, meaning I had the pleasure of directly listening to students' views. If you have an idea of how to improve the campus or have a problem you wish to solve, send me a message or pop in and see me for a chat!



### **Katie Patrick**

Sports and Activities Officer  
svykp@nottingham.ac.uk

Hi I'm Katie and I'm a third year Vet student. I'm the main contact for students to get involved with any sports and societies they're interested in! Having been on the Lacrosse Committee as President last year, I know how useful sports and societies can be to make new friends across all years and I hope I can make this even better this year!

### **Chloe Geoghegan**

Publicity Officer  
stycg4@nottingham.ac.uk

Hey, I'm Chloe, a third year Nutrition student and Guild Publicity Officer. I will be here to make sure all events, important information and campus news will be delivered to you in the best possible way! If you ever need help advertising an event, or wish to get the word out to the whole of the campus, don't be scared to ask!

### **Emily Forbes**

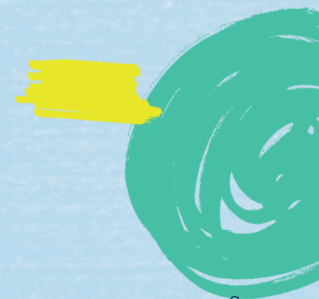
Female Welfare Officer  
styef4@nottingham.ac.uk

Hi I'm Emily, a second year Nutrition student. I am the JCR Female Welfare Officer making up part of the Guild team. I work closely with the Equal Opportunities and Welfare Officers and support the rest of the Guild. Come to me as a first point of contact if you have any queries or are in need of support.

### **Robin Leaper**

Male Welfare Officer  
styr15@nottingham.ac.uk

Hi I'm Robin, a third year Food Science student and your Male Welfare Officer. I'm here to ensure you are all healthy and happy during your time at university. I help to organise sexual health and other welfare services on campus. Feel free to ask me anything and I can show you the best way to help.





### Claire Davis

Senior ENTs Officer  
svycgd@nottingham.ac.uk

Hi I'm Claire your Senior ENTs officer for this year! I am a third year Vet student and love the SB community and way of life. A large part of SB life is the wide range of varied events that takes place right here! My job as Senior ENTs is to coordinate many events on the campus and make sure that there are no clashes. I am also in charge of organising a lot of the events on campus and hope to have some great and memorable events going on this year for everyone to get involved in! I was a part of the ENTs committee last year and loved it, so I'm very excited to be leading the committee this year!

### Bryony Watters

ENTs Officer  
symbw@nottingham.ac.uk

My name is Bryony Watters, (Brian-e) I am a second year Vet student and one of your ENTs Officers this year along with Rachel Lyon. This means I am involved in organising events on campus and Dining Ins. In other words making this year the best of your lives so far! I will be at all events on campus, so come and say hello!

All of us on the Guild are here to support you, as well as helping you make the most of your student life. Having been there and done it all, don't hesitate in getting in touch with me with any questions or issues!

### Rachel Lyon

ENTs Officer  
stysl3@nottingham.ac.uk

Hi I'm Rachel, one of this year's ENTs officers and a fourth year Dietetics student. Having joined the Karni team in my first year I then joined the ENTs committee and became Horseball Captain for SB last year.

This year I'll be helping to organise and run your on and off campus events, specifically Dining Ins and Funny Farm and I'm also Horseball Vice Captain for the SB riding club!

### Una Lilley

SB Communities Coordinator  
una.lilley@nottingham.ac.uk

Hi I'm Una and I'm a Student Union member of staff based at Sutton Bonington, I can be found in the Guild area most days. I work closely with the Guild to ensure students based at Sutton Bonington have an incredible time at University.

**Una is our "go to" person for any Society/Union based queries and is a fountain of knowledge for anything SB related! (apart from coursework maybe!)**



# Settling in at SB

**Dr. Ian Hardy** – Bonington Hall Warden

As Warden, I'm the head of Bonington Hall, the largest on-campus hall of residence at the University of Nottingham.

I work to make the experience of Sutton Bonington students, whether or not they live in Bonington Hall, brilliant! I liaise with the Hall catering and accommodation providers – and with you, the residents. I am usually involved with projects that improve the campus, such as the development of the new amenities building (the Barn) and the facilities within it.

Ultimately, in my role I promote student welfare, safety and discipline and, just as importantly, hall spirit!

**IF YOU'RE JUST STARTING OUT YOU MIGHT FIND THINGS A LITTLE OVERWHELMING. TO HELP YOU SETTLE IN CHECK OUT THE SB 'NEED TO KNOW' INFO BELOW.**

## Bonington Hall

Just moved to SB? You'll most likely be staying in Bonington Hall, which houses over 700 students spread across a few different buildings. Bonington Hall has dedicated Hall Reps, who represent you, bustling bars and all the facilities you'll need for university life, and most importantly there's a community spirit that'll make you feel welcome from day one.

## The Barn

We are extremely lucky here on SB to have a brand new amenities building, named the Barn. It was only opened in January and all the facilities are on offer for you to take advantage of! Head to the Barn for Student Services, the Guild Offices, the Dining Hall or the Bar. It's the centre of student activity with something for everyone!

## The SB Bar

The bar is the hub of social activity here at SB and a great place to meet new people during your first few weeks. Here you'll find alcoholic and non-alcoholic drinks, the pool table and table football. It's the main venue for events on campus and also hosts pub quizzes, pool competitions and much more!

While the bar doesn't open until 7pm for drinks, it's open all day as a meeting place and common area for you to relax and hang out. You can also grab lunch at The Square if you're feeling peckish!

## Shops and Transport

You might be wondering where you can stock up on life's essentials and that little matter of transport! Well wonder no more...

## Shopping

You can order online, pop down to the local shop or head into Loughborough or Nottingham for a choice of ethnic food shops. There's an open market in Loughborough on Thursdays and Saturdays, which is worth checking out.

Don't forget about the legendary award winning Farmers' Market right here on SB! Every first Wednesday of the month take the opportunity to buy fresh local produce and handmade items.

## Transport

The 901 Hopper Bus is free and takes you to University Park and into Nottingham city centre. You can find the timetable on the University website.

You can also hop on other buses into Nottingham and Loughborough and if you're a keen jet setter, East Midlands Airport isn't far away!



# NUS EXTRA CARD

## WHY YOU NEED ONE IN YOUR LIFE

Everyone loves freebies and discounts. That's why buying an **NUS Extra card for £12** is such a good idea.

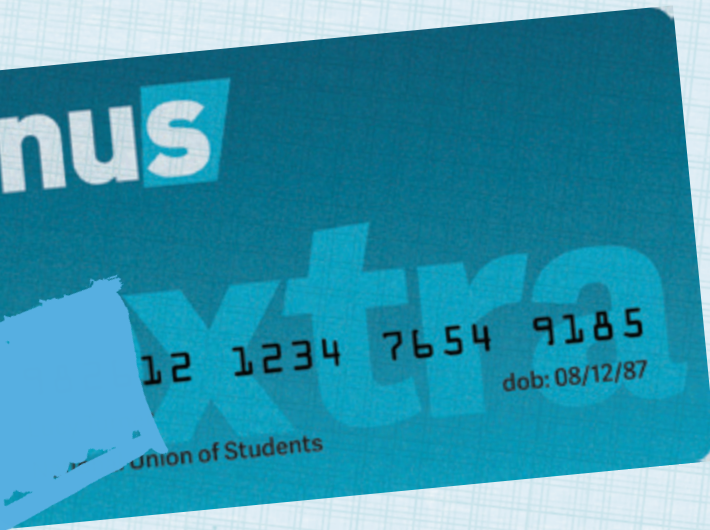
You can use it in loads of places to get discounts on clothes, gigs, travel and eating out, plus 40% of the cost goes straight back into the Students' Union to spend on providing great opportunities for you.

It's a no-brainer.

## USE IT IN YOUR STUDENTS' UNION

### Need Snacks, Stationery Or Stash?

Head to your SU Shop, found in Portland Building, the Queen's Medical Centre and Jubilee.



**ONLY £12**

# Your Students' Union

While you might be based outside of the city, you're not limited to the Guild – though there's plenty to get involved in! You're also a member of the Students' Union, (SU), which is the key to all the extra-curricular, social and democratic activity that goes on here at the University of Nottingham.

The SU has a base in the Portland Building at University Park, which houses all your membership and commercial services. Here you can find the Box Office, Student Volunteer Centre, Student Advice Centre, Print Shop, SU Shop and Mooch Bar.

The SU also gives you access to over 200 societies and 70 sports clubs and offers loads of ways for you to have your say about issues affecting students across the University.

To discover more about the activities, events and opportunities at your SU, or to find out more about the Students' Union, head online to [www.su.nottingham.ac.uk](http://www.su.nottingham.ac.uk) and see how you can shape your time here!

Oh and one more thing, make sure you visit the Welcome Festival at University Park. It's a great opportunity to get to know the campus, pick up some freebies and get chatting to other students.

## Follow Us

 @UONSU  
 UNIVERSITY OF NOTTINGHAM  
STUDENTS' UNION



# Students' Union Officers

---

THE SU OFFICERS WORK WITH THE SB GUILD OFFICERS TO MAKE YOUR UNIVERSITY EXPERIENCE AMAZING.

HEAD ONLINE TO FIND OUT MORE ABOUT THIS YEAR'S ELECTED OFFICERS AND HOW THEY'LL BE REPRESENTING YOU WITHIN THE SU. YOU CAN FOLLOW THEM ON TWITTER AND FACEBOOK TO KEEP TRACKS ON THEIR PROGRESS OVER THE YEAR.

## Angharad Smith

President

[supresident@nottingham.ac.uk](mailto:supresident@nottingham.ac.uk)

## Dan Rattigan

Education Officer

[sueducation@nottingham.ac.uk](mailto:sueducation@nottingham.ac.uk)

## Elliot Denham

Postgraduate Officer

[supgofficer@nottingham.ac.uk](mailto:supgofficer@nottingham.ac.uk)

## Sarah Pickup

Equal Opportunities & Welfare Officer

[suwelfare@nottingham.ac.uk](mailto:suwelfare@nottingham.ac.uk)

## Rob Jennings

Activities Officer

[suactivities@nottingham.ac.uk](mailto:suactivities@nottingham.ac.uk)

## James Bramley

Sports Officer

[susports@nottingham.ac.uk](mailto:susports@nottingham.ac.uk)

## Sam Peake

Community Officer

[sucommunity@nottingham.ac.uk](mailto:sucommunity@nottingham.ac.uk)

# Part time Officers

---

THERE ARE ALSO EIGHT PART-TIME OFFICERS WHO EACH REPRESENT AN EQUALITY AND DIVERSITY NETWORK. THESE NETWORKS ARE IN PLACE TO ENSURE EVERYONE IS PROPERLY REPRESENTED, REGARDLESS OF BACKGROUND OR CIRCUMSTANCE.

## Emma Ehrenberg and Emma Quaedvlieg

Women's Officers

[suwomensofficer@nottingham.ac.uk](mailto:suwomensofficer@nottingham.ac.uk)

## Parmeshwar Bawa

International Students' Officer

[suinternationalofficer@nottingham.ac.uk](mailto:suinternationalofficer@nottingham.ac.uk)

## Nneka Keshi

BME Officer

[submeofficer@nottingham.ac.uk](mailto:submeofficer@nottingham.ac.uk)

## Emma Scali

Mature Students' Officer

[sumatureofficer@nottingham.ac.uk](mailto:sumatureofficer@nottingham.ac.uk)

## Tom Parker

Environment & Social Justice Officer

[suenvironment@nottingham.ac.uk](mailto:suenvironment@nottingham.ac.uk)

## Alistair Boulter

LGBT Officer

[sulgbofficer@nottingham.ac.uk](mailto:sulgbofficer@nottingham.ac.uk)

## Molly O'Brien

Students' with Disabilities Officer

[sudisabledofficer@nottingham.ac.uk](mailto:sudisabledofficer@nottingham.ac.uk)

# Sports and Activities



## A FEW WORDS FROM KATIE, YOUR SPORTS AND ACTIVITIES OFFICER

There are 36 clubs and societies on SB, ranging from the bigger sports clubs such as rugby and lacrosse, to racquet sports and climbing. SB also has a wide range of societies unique to this campus! Check out Sco-op, Farmers' Market and the Shooting Club. You'll soon find out SB is a brilliant place to give something new a go.

Last year we saw the launch of a new Gold and Silver points based Society reward system. Societies gain points on their events and achievements throughout the year. This year, we're pleased to announce Riding and VetSoc have risen to Gold status!

It's easy to sign up to these societies during or after the Welcome Festival so sign up and enjoy!

**Katie Patrick**  
Guild Sports and Activities Officer

We're not expecting Olympic standard here at SB and all our societies and sports clubs are open to students of any ability. They're a great way of trying something new, whether you've always wanted to

have a whirl at Frisbee, or fancy yourself as the next Paul Hollywood. Alternatively, why not pick up an old hobby. This is your time, shape it your way.

**YOU CAN FIND OUT LOADS MORE AT THE WELCOME FESTIVAL, IN THE ONLINE ACTIVITIES GUIDE OR ON OUR WEBSITE. BUT FOR NOW, FEAST YOUR EYES OVER THIS LOT!**

|                        |                     |                  |
|------------------------|---------------------|------------------|
| Agrics                 | Extreme Ambling     | Rock Climbing    |
| Allotment Soc          | Food Co-op (SCo-op) | Rounders         |
| Animal Science Society | Hockey (Mixed)      | SB Players       |
| Badminton              | Horse Riding        | Shooting         |
| Biking (SBABES)        | Microbiology        | Tennis           |
| Dietics & Nutrition    | Music Soc           | Ultimate Frisbee |

# Volunteering

**IF YOU'RE LOOKING TO HAVE FUN, GIVE BACK TO THE LOCAL COMMUNITY AND GAIN SOME BRILLIANT EXPERIENCE AT THE SAME TIME, VOLUNTEERING IS FOR YOU!**

There are loads of projects available if you'd like to get involved and try something new. Whether you want to help out regularly at schools and community centres or take on lower commitment, short-term projects, there's something for everyone.

Our Student Volunteer Centre (SVC) is based on University Park Campus, but Volunteer Coordinator Shea Mellor visits Sutton Bonington weekly to keep you up to date on volunteering opportunities!

You'll also be able to talk to the SVC at the Welcome Festival, they're a friendly bunch so make sure you stop for a chat!

**Want to get ahead of the game?**

**Get in touch**

volunteering@nottingham.ac.uk

0115 8468750

🐦 @UoNSUVolunteer



# KARNIVAL

..... *is our very own* .....

## STUDENT-RUN CHARITY

THE LARGEST IN EUROPE *raising over*

**£1.7 MILLION**

Karnival is also in charge of some of the biggest nights out and hold Welcome Week events that aren't to be missed. Luckily for you, you needn't head over to University Park to find out more as there are several Karnival Reps based on Sutton Bonington.

They'll be able to sell you tickets, tell you more about how you can get involved and give you a better idea of what they get up to throughout the year.

**WWW.KARNI.CO.UK**

**Your 2015-2016  
Karnival team!**

Bryony Watters

Matt French

Zak Brown

Ellie McLoughlin

Megan Moore

Kotryna

Surkeviciute



Discover Shape Belong

# Events and Entertainment



**SB APPRECIATES A GREAT NIGHT AND YOUR VERY OWN DEDICATED ENTS COMMITTEE CAN BE RELIED ON TO SUPPLY JUST THAT.**

They run most of the social events on campus while also supporting societies with their own events. They're a specialist part of the Guild and are students too, so you can be sure of a good time.

Meet the ENTs team on pages 10-11, they, along with the ENTs committee are here to put on almost any event you can dream of!

## **A taster of what's to come**

SB Societies Ball, Rumble in the Jungle, Keggy Crawl, The Funny Farm, Dining Ins, UV Party, Hypnotists, Acoustic Evenings.

**Check out the events calendar to see what the team have organised for your first week!**

# Health and Welfare

**The first few weeks are all about settling in and finding your feet, but it's important you feel safe and happy here too!**

## **Health Services**

Remember to register with one of the GPs below. Registering only takes two minutes and means you'll be able to get treatment quickly if you need it.

### **Orchard Surgery**

The Dragwell  
Kegworth  
01509 672419

### **East Leake Medical Group**

East Leake Health Centre,  
East Leake  
01509 852181

### **Soar Valley Surgery**

Sutton Bonington  
01509 672229

### **Church House Surgery**

Ruddington  
0115 9847101

## **Welfare**

The Union and University run lots of different services to support you throughout your studies. There are also several Student-Run Groups you can go to if you need a chat. Hop online for more details.

## **The Student Advice Centre**

Based in the Portland Building on the UP Campus with a number of advisers to help you out with course, housing and financial worries, among other things.

## **Nightline**

A Student-Run listening service, perfect if you need someone impartial to talk to. They also run an extended service during exam periods.

## **Welfare Officers**

Contact the officers if you're in need of support or have a query. Chat to your SB Guild Officers or contact Sarah Pickup – the SU Equal Ops & Welfare Officer – for information on how the Union can help you out.

# Events Calendar

## 19 September

09:00 — 17:00

Student Arrival & Welcome  
The Bar, the Barn

19:00 Onwards  
Student Guild BBQ  
Front Lawns

## 20 September

09:00 — 16:00

Student Arrival & Welcome  
The Bar, the Barn

16:00 — 16:30

Talk by your Hall Warden  
and Introduction of Hall  
Resident Tutors  
Auditorium Lecture Theatre – A30

16:45

Welcome by the Guild, Welcome  
Mentors and International Reps  
Auditorium Lecture Theatre – A30

17:00

New Students  
Welcome Buffet  
Auditorium Lecture Theatre – A30

20:30 Onwards  
SB Student Guild  
Meet & Greet  
The Bar, the Barn

## 21 September

20:00 Onwards  
ISSB Meet & Greet  
Baywatch

Ocean for new students  
SB goes to Oceana for  
returning students

## 22 September

14:00 — 16:00

The Guild Garden Party  
Main Building Lawns and Marquee

20:00

SB Returners Festival Night  
SB Harpers Bar  
Toga Night  
Rock City for new students

## 23 September

13:00 — 16:00

SB Guild Welcome Festival  
Sports Hall

20:00

Open Mic Night  
The Bar, the Barn  
Heaven vs. Hell  
Stealth for new students  
Christian Union Meet and Greet

## 24 September

12:30 — 13:45

Mature and Post Graduate  
Student Buffet

20:00

SB Ceilidh SB Campus  
Caveman event  
Oceana for new students  
Games Night Guild Space

## 25 September

20:00

Welcome Week Finale Party  
Capital FM Arena  
Movie Night SB

## 26 September

19:00

Fifty Shades of Hay  
SB Finale Party  
The Bar, the Barn

## 27 September

13:00 Onwards

Love your Hall  
Quiz and Acoustic Music  
Front Lawns, The Bar, the Barn



# Useful Contacts

---

## ENTs Contacts

---

**Claire Davis** – Senior ENTs Officer  
svycgd@nottingham.ac.uk

**Bryony Watters** – ENTs Officer  
svybw@nottingham.ac.uk

**Rachel Lyon** – ENTs Officer  
svyrl3@nottingham.ac.uk

## Students' Union

---

**0115 8468800**  
**studentsunion@nottingham.ac.uk**

**Una Lilley** – Comms Coordinator  
0115 9516211  
una.lilley@nottingham.ac.uk

**Shea Mellor** – Volunteer Coordinator  
0115 8468751  
shea.mellor@nottingham.ac.uk

## Karnival

---

0115 8468717  
karnival@nottingham.ac.uk

## Support

---

**Student Advice Centre**  
0115 8468730  
suadvice@nottingham.ac.uk

**Dr. Ian Hardy** – SB Hall Warden  
0115 9516052  
ian.hardy@nottingham.ac.uk

**Nightline**  
0115 951 4985  
nightlineanon@nottingham.ac.uk

**Finance**  
sufinance@nottingham.ac.uk



Welcome  
TO SUTTON BONINGTON

---

 @SB \_ GUILD

 FACEBOOK.COM UOFNSU

[WWW.SU.NOTTINGHAM.AC.UK/SB](http://WWW.SU.NOTTINGHAM.AC.UK/SB)

