



**your future**   
[www.yourfuture-eastmidlands.co.uk](http://www.yourfuture-eastmidlands.co.uk)

# XCR1

Save time and money promoting your college and university courses using this approved standard.

**Aimhigher...** LEAP AHEAD  
in the east midlands



## **Do you currently:**

- **Have inconsistent information about courses?**
- **Struggle to put together an accurate list of all your institution's offerings?**
- **Want to improve the internal efficiency of sharing and collecting course details?**
- **Spend valuable staff time updating numerous external agencies with course information? e.g. UCAS etc.**

## **XCRI can help you gain the competitive edge by:**

- **Providing you with a UK national standard format for your course data, reducing your data burden.**
- **Allowing course data to be easily shared and collected internally.**
- **Improving efficiency by allowing course data to only be entered once to update all systems.**
- **Allowing this course data to be easily exported to participating external agencies without any extra inputting/ data collection.**

**XCRI is endorsed by HEFCE, JISC and the DCSF; there is no other competing standard for collecting course data. Get ahead of the game and get on board with XCRI now. There is currently free expert support available from your Lifelong Learning Network!**

## **So what is XCRI?**

XCRI is an XML standard for course advertising data and is used to share information about courses between organisations.

Organisations such as the National Learning Directory and UCAS have plans to support and implement XCRI imports to their websites in the near future.

The East Midlands is at the leading edge in XCRI implementation and regional pilots have been informing DCSF recommendations.

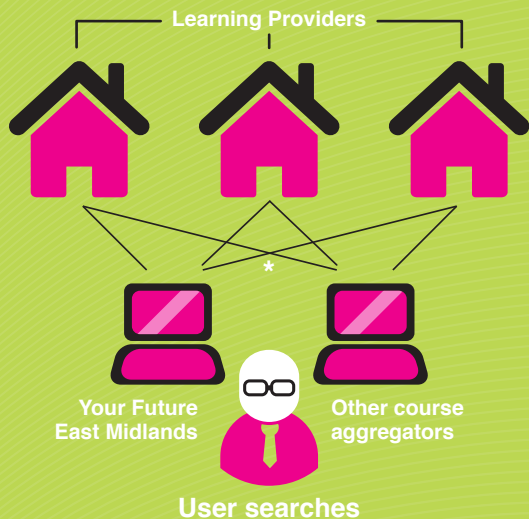
Regional organisations such as the Your Future East Midlands website and all East Midlands Area Prospectuses are currently piloting XCRI as an easy way to import data onto their systems and to facilitate cross-border applications, allowing for the most accurate and up-to-date course information possible. This in turn will ensure that learners are receiving the most current course information that your institution has.

Five Colleges and Higher Education Institutions in the region have already produced XCRI-formatted course information. There are now 11 organisations in the East Midlands on board with this exciting new project.

## **What would using XCRI entail?**

We are not selling a package. XCRI is not a system and there would be minimal changes to databases or servers unless you would like to improve your current systems.

The cost of implementing XCRI would be low, just requiring your IT or MIS team to introduce some software developments. As mentioned earlier, there is currently support available for this.



\* send courses data regularly and dynamically to course aggregators

## XCRI: How it works

The Learning Provider (University/ College) would ensure that their course information was available in the XCRI format. A data aggregator, such as Your Future East Midlands, or the Area Prospectus, would 'read' the XCRI document and feed it automatically into the system. This could be scheduled whenever both parties agreed was most suitable. The learner searching for courses on these systems would then have access to the most accurate and up-to-date courses information to support their application.

## Who needs to know?

Implementing XCRI will benefit various parts of your institution, and does not necessarily sit with just one team. We recommend that the following be involved in a decision to move forward with XCRI:

- Senior Management
- MIS
- Marketing
- IT

If you would like to speak to someone about XCRI, please contact Carla Herbert on 01509 228648 or, alternatively, email: [c.herbert@lboro.ac.uk](mailto:c.herbert@lboro.ac.uk).

Visit the dedicated XCRI page on the Your Future East Midlands website through the link below:

[www.yourfuture-eastmidlands.co.uk/xcri](http://www.yourfuture-eastmidlands.co.uk/xcri)

JISC ePortfolio



your future **i**  
www.yourfuture-eastmidlands.co.uk

XCRI was developed by JISC and supported nationally through JISC's XCRI support project, and The Centre for International ePortfolio Development at the University of Nottingham



Please recycle

This publication has been printed on recycled paper using 100% vegetable-based inks.