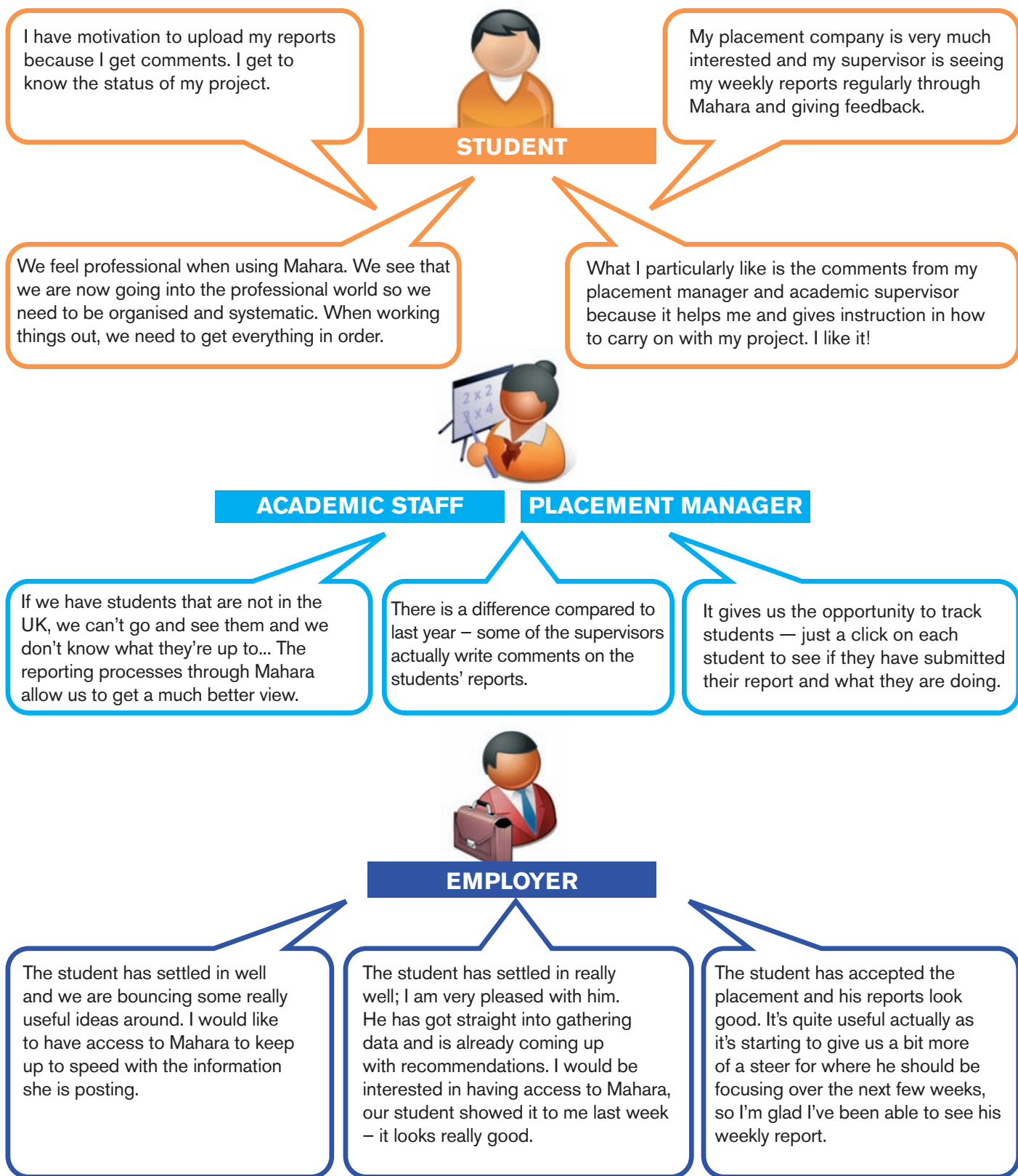


SAMSON Activity Case Study

Biosciences research project placements for MSc Students using Mahara



- 110 MSc Placement students...
- 12 Employers...
- 10 Academic staff...
- 1 Placement Manager...


Professional ePortfolios for student placements



The Mahara Open Source ePortfolio is being used to support communications between the University academic staff, students, the University placement manager and employer mentors. Students create weekly updates on their project progress, access announcements, record and track both professional and academic skills gained while on the placement.

Mahara, hosted at the University for SAMSON, is fully available to students and University staff involved in the SAMSON pilots. Employers based in the East Midlands, and also as far afield as Canada, are being offered a view into aspects of the students' ePortfolio that they need to see.

Modifications to Mahara have pushed the students' 'view' to the forefront, allowing easy access to shared information. A targeted interface enables the employer to view only relevant information that the student has chosen to share with them.

<p>Using the group</p> <p>Accessing documents Click the 'Files' tab to access relevant documents and materials to support you in your placement.</p> <p>Connect with other members Click the 'Members' tab to view other placement students and your Placement Manager.</p> <p>SB Food Sciences Building</p>  <p>Sutton Bonington</p>	<p>Requirements before placement</p> <p>BEFORE starting your placement...</p> <table border="1"> <tr> <td>READ:</td> <td>Health & Safety Safety Handbook</td> </tr> <tr> <td>SIGN:</td> <td>Confidentiality agreement</td> </tr> <tr> <td>Behaviour Questionnaire</td> <td>Complete the Questionnaire</td> </tr> </table> <p>Planning your project</p> <p>Planning your Placement Project Download the Project form below to write your project brief. A sample is also provided.</p> <ul style="list-style-type: none"> Project form (blank) Sample brief <p>Weekly Updates</p> <p>Weekly update FPM Students: You are required to submit a weekly update to your Academic Supervisor. ABT Students: You are required to submit a weekly update to Judith Wayte.</p> <p>Download the blank form below, fill in and resave. Upload it into your folder called 'weekly updates'.</p> <ul style="list-style-type: none"> Weekly update form (Blank) 	READ:	Health & Safety Safety Handbook	SIGN:	Confidentiality agreement	Behaviour Questionnaire	Complete the Questionnaire
READ:	Health & Safety Safety Handbook						
SIGN:	Confidentiality agreement						
Behaviour Questionnaire	Complete the Questionnaire						

University of Nottingham:

Kirstie Coolin, Angela Smallwood, Sandra Winfield

General enquiries:

eportfolio-admin@nottingham.ac.uk

References:

www.nottingham.ac.uk/eportfolio/Samson/index.shtml

Who are we?

The University of Nottingham Centre for International ePortfolio Development (ClePD) is funded by JISC, the EU and others to carry out research projects into how eportfolios support learning, transitions and collaborations between institutions and between learning and work, widening participation, and Information, advice and guidance (IAG).

We work with a large number of regional partners including Connexions, schools and colleges, other universities, Lifelong Learning Networks, employers and national agencies.