



Excavating past population structures by surname-based sampling: the genetic legacy of the Vikings in northwest England

Journal:	<i>Molecular Biology and Evolution</i>
Manuscript ID:	MBE-07-0499.R2
Manuscript Type:	Research Article
Date Submitted by the Author:	n/a
Complete List of Authors:	<p>Bowden, Georgina; University of Leicester, Genetics Balaesque, Patricia; University of Leicester, Genetics King, Turi; University of Leicester, Genetics Hansen, Ziff; University of Nottingham, National Centre for Macromolecular Hydrodynamics Lee, Andrew; University of Leicester, Genetics Hurley, Emma; University of Nottingham, National Centre for Macromolecular Hydrodynamics Roberts, Stephen; The Queen Katherine School Waite, Patrick; West Lancashire Heritage Association Jesch, Judith; University of Nottingham, School of English Studies Thomas, Mark; The Centre for Genetic Anthropology, Department of Biology Harding, Stephen; University of Nottingham, National Centre for Macromolecular Hydrodynamics Jobling, Mark; University of Leicester, Department of Genetics</p>
Key Words:	human, Y chromosome, surnames, population, Vikings, admixture



1
2
3 **Research article: Excavating past population structures by surname-based**
4 **sampling: the genetic legacy of the Vikings in northwest England**
5
6
7
8
9

10 Georgina R. Bowden¹, Patricia Balaesque¹, Turi E. King¹, Ziff Hansen², Andrew C.
11 Lee^{1*}, Giles Pergl-Wilson², Emma Hurley², Stephen J. Roberts³, Patrick Waite⁴, Judith
12 Jesch⁵, Abigail L. Jones⁶, Mark G. Thomas⁷, Stephen E. Harding² and Mark A.
13 Jobling¹
14
15
16
17
18
19

20 ¹ Department of Genetics, University of Leicester, University Road, Leicester LE1
21 7RH, UK
22
23

24 ² National Centre for Macromolecular Hydrodynamics, University of Nottingham,
25 Sutton Bonington Campus, Loughborough LE12 5RD, UK
26
27

28 ³ The Queen Katherine School, Appleby Road, Kendal, Cumbria LA9 6PJ, UK
29

30 ⁴ West Lancashire Heritage Association, Derby Street, Ormskirk, L39 2BJ, UK
31

32 ⁵ School of English Studies, University of Nottingham, University Park, Nottingham,
33 NG7 2RD, UK
34
35

36 ⁶ The Centre for Genetic Anthropology, Department of Biology, Darwin Building,
37 University College London, Gower Street, London, WC1E 6BT, UK
38
39

40 ⁷ Department of Biology, Darwin Building, University College London, Gower Street,
41 London, WC1E 6BT, UK
42
43
44

45 * *Current affiliation:* Division of GI Surgery, University of Nottingham Medical School
46 at Derby, Derby City General Hospital, Derby, DE22 3DT
47
48

49 *Address for correspondence and reprints:* Prof Mark A. Jobling, Department of Genetics,
50 University of Leicester, University Road, Leicester LE1 7RH, UK
51
52

53 Tel.: +44 (0)116 252 3427. Fax: +44 (0)116 252 3378. Email: maj4@leicester.ac.uk
54
55
56
57

58 **Keywords:** Human, Y chromosome, surnames, population, Vikings, admixture
59

60 **Running head:** Surname-based population sampling

Abstract

The genetic structures of past human populations are obscured by recent migrations and expansions, and can be observed only indirectly by inference from modern samples. However, the unique link between a heritable cultural marker, the patrilineal surname, and a genetic marker, the Y chromosome, provides a means to target sets of modern individuals that might resemble populations at the time of surname establishment. As a test case, we studied samples from the Wirral peninsula and West Lancashire, in northwest England. Place names and archaeology show clear evidence of a past Viking presence, but heavy immigration and population growth since the Industrial Revolution are likely to have weakened the genetic signal of a thousand-year-old Scandinavian contribution. Samples ascertained on the basis of two generations of residence were compared with independent samples based on known ancestry in the region, plus the possession of a surname known from historical records to have been present there in medieval times. The Y-chromosomal haplotypes of these two sets of samples are significantly different, and in admixture analyses the surname-ascertained samples show markedly greater Scandinavian ancestry proportions, supporting the idea that northwest England was once heavily populated by Scandinavian settlers. The method of historical surname-based ascertainment promises to allow investigation of the influence of migration and drift over the last few centuries in changing the population structure of Britain, and will have general utility in other regions where surnames are patrilineal and suitable historical records survive.

Introduction

Studies of the human past draw on lines of evidence from many fields, including paleoclimatology, archaeology, paleontology, linguistics, and history (Jobling, Hurles, and Tyler-Smith 2004), and recent years have seen an increasing influence of genetics. Unlike most other sources of evidence, genetic studies generally rely upon the collection of data from contemporary sources - modern, living populations - and use various statistical methods of inference to make deductions about events many generations ago. However, modern populations have been influenced by recent migration and expansion, associated with events such as the Industrial Revolution, and may provide a blurred and misleading picture of the past. Ancient DNA methods have promised direct access to the genetic diversity of past populations, but unfortunately the practical difficulties of retrieving verifiable and contamination-free DNA data mean that sample sizes are inconveniently small for population genetic analysis (Topf et al. 2006), except in rare cases of exceptional preservation (Keyser-Tracqui, Crubézy, and Ludes 2003).

A possible alternative approach is suggested by the link between a heritable cultural marker, the patrilineal surname, and an informative genetic marker, the non-recombining region of the Y chromosome, demonstrated through studies of men sharing surnames (Sykes and Irven 2000; King et al. 2006; McEvoy and Bradley 2006). Although the link between surname and Y-chromosomal haplotype is imperfect, due to multiple founders for names, and historical nonpaternities and adoptions (Jobling 2001), unrelated men sharing surnames are significantly more likely to share haplotypes than are men carrying different names. This demonstrates that surnames have been associated with specific haplotypes for many generations, and suggests that access to the Y-chromosomal diversity of past populations might be possible through the selection of modern samples based on surnames known to exist in a particular region during the medieval period. A similar approach has been proposed independently (Manni et al. 2005), based on a spatial analysis of ~200-year old Netherlands surnames.

1
2
3
4
5
6
7
8
9
10
11
12
13
14
15
16
17
18
19
20
21
22
23
24
25
26
27
28
29
30
31
32
33
34
35
36
37
38
39
40
41
42
43
44
45
46
47
48
49
50
51
52
53
54
55
56
57
58
59
60

A useful test case to evaluate the potential of surname-based ascertainment is provided by the thousand-year-old Viking settlement of the British Isles. The Viking age of raiding, exploration, trading and colonization began in the late eighth century, with a series of attacks on the coasts of Britain, Ireland and France. In England, a shift from raiding to permanent settlement began after 865AD. The modern consensus has moved from the earlier view of a mass migration of Viking settlers, to a more geographically variable and gradual process, with much assimilation of local culture, under the administration of a Scandinavian elite (Richards 2004). Even though Viking rule in England came to an end nearly a thousand years ago, and the settlers were soon integrated linguistically and culturally, abundant evidence of Scandinavian influence remains today. Important archaeological findings exist, but the most striking evidence is linguistic and onomastic – many words in standard English and in local dialects, and many place-names, are of Scandinavian origin. In some areas of English counties that formed part of the Danelaw (Figure 1), the region under the administrative control of the Vikings from the late 9th century, up to 70% of major place-names are in this category, with endings such as *-by* and *-thorp(e)*.

Attempts to identify a corresponding genetic legacy of Viking settlement in modern populations of the British Isles have focused on North Atlantic islands with archaeologically and culturally defined histories of Viking contact (Helgason et al. 2000a; Helgason et al. 2000b; Helgason et al. 2001; Wilson et al. 2001; Capelli et al. 2003; Goodacre et al. 2005). These studies have exploited the phylogeographic resolution of the paternally inherited Y chromosome, and the maternally inherited mitochondrial DNA to reveal strong signals of Scandinavian admixture. For example, the proportion of Scandinavian patrilineal ancestry in Iceland has recently been estimated at 75%, and this proportion has been described as declining through Shetland (44.5%), Orkney (31%), the Western Isles and Skye (22.5%), to the coastal regions of northern and western Scotland (15%) (Goodacre et al. 2005).

In mainland Britain, abundant evidence exists for a past Viking presence in the Wirral peninsula and West Lancashire, in the northwest of England.

1
2
3 Scandinavian major place-names are common (Cavill, Harding, and Jesch 2000;
4
5 Harding 2002) (Figure 1), and these two regions possess the only definite examples
6
7 of the place-name 'Thingwall' (from Old Norse *þing-völlr* meaning 'Assembly Field')
8
9 in England, indicating settlements of sufficient density and autonomy to warrant
10
11 their own parliaments. Moreover, in the case of Wirral, the intensity and distribution
12
13 of minor place name elements attests to the persistence of a Scandinavian-influenced
14
15 dialect through the centuries that may reflect the intensity of the original settlement
16
17 (Wainwright 1943; Cavill, Harding, and Jesch 2000). This onomastic evidence is
18
19 supported by archaeological discoveries such as jewelry, weaponry or treasure
20
21 hoards at Meols, Crosby, and Cuerdale (Graham-Campbell 1992; Harding 2002) or
22
23 Hiberno-Norse ring-headed crosses (Bu'Lock 1958) and hogback tombstones
24
25 (Collingwood 1928; Bailey et al. 2006) which reflect Scandinavian presence.
26
27

28
29 In one version of events, Vikings of Norwegian origin, under their leader
30
31 Ingimund, arrived in the region in 902AD after having been expelled from Dublin.
32
33 Æthelflæd, Lady of the Mercians, granted them land in north Wirral, where they
34
35 settled (Wainwright 1942; Wainwright 1948; Wainwright 1975). More complex
36
37 models have also been proposed, based on place-names analysis, including elements
38
39 of migration from the Isle of Man as well as Dublin (Fellows-Jensen 1992). Specific
40
41 historical evidence for the migration of Vikings into West Lancashire is lacking,
42
43 although place-names and archaeological evidence clearly demonstrate that this
44
45 occurred.
46

47
48 Widespread migration and population expansion in recent centuries presents
49
50 a particular problem in genetic analyses of mainland regions of Britain. The Wirral
51
52 experienced a major influx of people since the medieval period, its population
53
54 growing over seventy-fold between 1545 and 1921 (Roberts 2002) – almost ten times
55
56 the national average increase. In conventional sampling strategies, where two
57
58 generations of residence in an area are sufficient to qualify a DNA donor for
59
60 participation in a study, the signal of Viking influence is likely to be weakened by the
noise of more recent population movement.

1
2
3 Here we exploit the relationship between patrilineally inherited surnames
4 and Y-chromosomal haplotype, using surname-based ascertainment to ask if
5 targeted sub-sampling of modern populations can retrieve samples that more
6 accurately represent the structures of populations in the past. Historical documents
7 can provide lists of relevant surnames, and in our study we have used such sources
8 to provide a set of names present in the Wirral and West Lancashire prior to 1572.
9 We show that samples taken under these criteria are significantly different from
10 samples taken on the two generations of residence criterion. They preserve a
11 markedly stronger signal of Scandinavian admixture than their modern
12 counterparts, support the idea the northwest England was once heavily populated
13 by Scandinavian settlers, and validate the surname-ascertainment approach.
14
15
16
17
18
19
20
21
22
23
24
25
26
27
28
29
30
31
32
33
34
35
36
37
38
39
40
41
42
43
44
45
46
47
48
49
50
51
52
53
54
55
56
57
58
59
60

Materials and Methods

DNA samples

Buccal samples were taken with informed consent, and DNA extracted as described (King et al. 2006).

Samples were collected from Mid-Cheshire, the Wirral and West Lancashire under the two generations of residence criterion.

Independent samples were also collected from the Wirral and West Lancashire based upon a patrilineal residence criterion and possession of a surname known from historical documentary sources to have been present in the region prior to 1572. For the Wirral, we compiled a list of 236 surnames from the 1545 subsidy rolls (Irvine and Sanders 1894), listing all households in the Wirral recorded during the reign of Henry VIII, supplemented with two surnames from records of court proceedings dating from 1353 (Booth 1983), one from ale-house licensing records from 1572 (Bennett and Dewhurst 1940) and three based on specific old local place-names. For West Lancashire, we used a list of 232 surnames based on a list of inhabitants of Ormskirk, Scarisbrick-with-Hurlton, Bickerstaffe, Burscough-with-Marton, Westhead-with-Lathom and Skelmersdale who promised to contribute to the stipend of the priest of the altar of Our Lady at Ormskirk in 1366 (Peet 1991); this was supplemented with 37 surnames based on specific old local place-names (Ekwall 1922; McKinley 1981), and allowing additional surnames containing particular old place-name elements of Scandinavian origin. Some surnames were converted into their current equivalents to allow matching to modern donors' names. Within each sample, duplicate surnames (including known spelling variants) were avoided, though some surnames are found in both Wirral and West Lancashire samples, carried by different and, to our knowledge, unrelated individuals.

Comparative data were also taken from the literature (Capelli et al. 2003).

Y-chromosomal haplotyping

Binary markers (Y Chromosome Consortium 2002) shown in Figure 2 were typed hierarchically using the SNaPshot minisequencing procedure (Applied Biosystems) and an ABI3100 Genetic Analyzer (Applied Biosystems). Initially all chromosomes were typed with Multiplex I of Bosch et al. (Bosch et al. 2006) containing markers M9, M69, M89, M145, M170, M172, M201 and 12f2. Chromosomes belonging to haplogroup DE were further typed with Multiplex III (Bosch et al. 2006), containing markers M33, M35, M75, M78, M81, M96, M123 and P2, while chromosomes in Haplogroup K*(xR) were typed with the markers M17 and M173 (Bosch et al. 2006), and M269 (Adams et al. 2006).

For the purposes of comparison with published data, haplogroups were combined in some cases; in particular, chromosomes defined by us as hgG were placed into the superhaplogroup F*(xIJK). The haplogroup we defined as R1b3 was taken to be equivalent to R1(xR1a1) (Capelli et al. 2003).

Six Y-specific microsatellites (DYS19, DYS388, DYS390, DYS391, DYS392, DYS393), chosen to be compatible with published control data (Capelli et al. 2003), were typed in a single multiplex as described (Thomas, Bradman, and Flinn 1999).

Analysis

Population differentiation tests and the generation of F_{ST} and R_{ST} matrices were carried out using Arlequin (Schneider, Roessli, and Excoffier 2000). Multi-dimensional scaling was done using PROXSCAL within SPSS 14.0.

Admixture analysis was carried out using the mp estimator (Helgason et al. 2001). The probability that a particular haplotype from the admixed population originated from the Norwegian parental population is determined by its relative frequency in Norwegian and British/Irish samples. If the haplotype is not present in the parental populations, this probability is derived from the relative frequency of the most closely related haplotypes in terms of mutational differences. The average proportion of haplotypes assigned a Norwegian origin, plus standard deviation, was

1
2
3 derived from 5000 runs of a Monte Carlo simulation. Note that the assumptions
4 underlying the admixture estimation do not permit significance testing of differences
5 between proportions. Binary markers and microsatellites were used together, with
6 the former given a relative weight of 100 to reflect their lower mutation rates. The
7 Norwegian parental sample (n=201) was from a published dataset (Capelli et al.
8 2003), and the British/Irish parental sample was assembled from the same source.
9 We followed precedent (Goodacre et al. 2005), by pooling central Scottish and central
10 Irish haplotypes (Pitlochry and Castlereagh samples (Capelli et al. 2003) combined,
11 n=84). To reduce bias, we equalized the sizes of the parental population samples by
12 random sub-sampling of 84 chromosomes from the larger Norwegian set prior to
13 analysis. Comparison of ten random sub-sets (Fisher exact test) showed no
14 significant differences.
15
16
17
18
19
20
21
22
23
24
25
26
27
28
29
30
31
32
33
34
35
36
37
38
39
40
41
42
43
44
45
46
47
48
49
50
51
52
53
54
55
56
57
58
59
60

Results

Two independent samples of unrelated males representing the Wirral, and two representing West Lancashire, were collected using different criteria. The first type of sample (which we refer to here as 'modern') is based simply on two generations of residence, and ignores surname. Subjects for the second sample ('medieval') were also required to have at least two generations of residence, and to have their earliest recorded patrilineal ancestor born in the relevant area. However, in addition they were required to carry surnames (*Supplementary Information*) that were present in the relevant region prior to 1572 as judged by documentary sources (see Materials and Methods). Note that hereditary surnames were not established until long after the end of Viking rule, so our ascertainment does not require names themselves to be of Scandinavian origin; the fact that many of them do contain Scandinavian elements reflects the use of local place-names in the locative surnames. The approach of surname-based ascertainment yielded samples of 37 and 40 males respectively for Wirral and West Lancashire.

The Y chromosomes of the 'modern' and 'medieval' Wirral and West Lancashire samples were analyzed using six microsatellites (*Supplementary Table*), and a total of 13 binary markers defining 13 haplogroups (Figure 2), of which eight were observed. These haplogroups are typical of western European Y chromosomes, with one exception: a single example of hgE3a in the Wirral 'medieval' sample. This haplogroup is typical of sub-Saharan African populations, comprising 48% of a continent-wide sample of 1122 African chromosomes (Wood et al. 2005), and is not reported in a composite sample of 2193 British Isles males (Capelli et al. 2003; King et al. 2007). It probably represents an African migrant, but not a recent one, since the individual carrying the chromosome reports at least four generations of residence in the Wirral. It may, like a hgA1 chromosome found previously in a man with ancestry in Yorkshire (King et al. 2007), represent African presence (Fryer 1984) via the Roman occupation, or the Atlantic slave trade, and the proximity of the Wirral to the port of Liverpool might suggest the latter.

1
2
3 To ask if our two sampling methods led to a significant difference in
4 haplogroup profiles, the 'modern' and 'medieval' samples were compared in
5 population differentiation tests. Both Wirral and West Lancashire showed significant
6 modern-medieval differences, with p-values of 0.032 and 0.006 respectively. In both
7 cases, the 'medieval' samples contain a greater number of haplogroups than do the
8 'modern' samples. Gene diversity in both 'medieval' samples is increased compared
9 to their 'modern' counterparts (Figure 2), suggesting that some degree of recent
10 homogenization has occurred, possibly through immigration from relatively low-
11 diversity populations.
12
13
14
15
16
17
18
19
20
21

22 To illuminate the basis for this modern-medieval difference, we compared all
23 four samples with a 'modern' sample from Mid-Cheshire (a nearby region lacking
24 Scandinavian place-names) collected and analyzed as part of this study, and with
25 other 'modern' data from the literature (Capelli et al. 2003). From Britain we chose
26 nearby western British populations (the Isle of Man, Llangefni in Anglesey, and
27 Penrith), and a sample ('British/Irish') representing the putative population of the
28 western British Isles prior to the Viking incursions, made by pooling central Scottish
29 and central Irish samples (see Materials & Methods). Samples from Orkney and
30 Shetland were included since these are known to show substantial Scandinavian
31 admixture (Goodacre et al. 2005), and a sample from Norway was used to represent
32 a possible Viking source population (Figure 3).
33
34
35
36
37
38
39
40
41
42
43
44

45 HgR1a1 is a relatively frequent lineage in Norway, Shetland, Orkney and the
46 Isle of Man, but rare in most mainland English and Welsh samples (Capelli et al.
47 2003) (Figure 3). The 'medieval' sample from West Lancashire shows a significant
48 increase in the proportion of hgR1a1 with respect to its 'modern' counterpart
49 ($p=0.044$, Fisher exact test), and for the Wirral samples the increase is close to
50 significance ($p=0.051$). These observations seem compatible with a higher proportion
51 of Viking lineages in the 'medieval' than in the 'modern' Wirral and West Lancashire
52 samples. Comparison of the microsatellite haplotypes of these 'modern' and
53 'medieval' examples of hgR1a1 chromosomes (*Supplementary Table*) shows that they
54
55
56
57
58
59
60

1
2
3 form a coherent haplotype cluster, suggesting that the use of the surnames-based
4 sampling is not altering the nature of the hgR1a1 haplotypes sampled, but simply
5 increases their proportions. However, this conclusion might change if the resolution
6 of microsatellite typing were higher.
7
8
9

10
11 Figure 4a shows the result of a multidimensional scaling analysis based on
12 population pairwise F_{ST} values, calculated from haplogroup frequencies. The
13 'medieval' Wirral and West Lancashire samples are differentiated from their
14 'modern' counterparts primarily in dimension 2 of the plot, and lie closer to samples
15 from the Isle of Man and Orkney, known to have experienced significant
16 Scandinavian input (Capelli et al. 2003; Goodacre et al. 2005). In a parallel analysis
17 based on population pairwise R_{ST} values calculated from microsatellite data, the
18 trend is similar (Figure 4b).
19
20
21
22
23
24
25
26
27

28 Admixture analysis, in which individual samples are treated as hybrid
29 populations made up of contributions from two parental populations, provides a
30 means of assessing statistically the relative degree of putative Viking genetic input
31 into the 'modern' and 'medieval' samples. Following published precedent (Goodacre
32 et al. 2005), we assessed admixture between the Norwegian and the 'British/Irish'
33 samples in the two Wirral and two West Lancashire samples. As controls, we also
34 considered admixture within the samples from Llangefni in Anglesey (Wales), Mid-
35 Cheshire, Penrith, the Isle of Man, and Shetland and Orkney. We employed the mp
36 estimator of Helgason et al. (Helgason et al. 2001), analysing admixture using a
37 combination of binary and microsatellite marker data (Table 1).
38
39
40
41
42
43
44
45
46
47
48

49 Where comparisons can be made, the proportions of Scandinavian admixture
50 that we estimate differ somewhat from those seen in a previous study (Goodacre et
51 al. 2005): for Shetland we observe 41% Scandinavian ancestry compared to the
52 previously published figure of 44%, and the corresponding figures for Orkney are
53 50% compared to 31%. Such differences may reflect sampling variance or differences
54 in the compositions of the parental and hybrid samples and in the marker resolution
55 – we used greater numbers of both binary markers and microsatellites. Note that
56
57
58
59
60

1
2
3 direct comparisons with the study from which we draw our comparative data
4 (Capelli et al. 2003) are problematic, since it used a different admixture method, and
5 considered admixture between a Norwegian sample and a sample chosen to
6 represent Anglo-Saxons. The lowest proportions of Scandinavian admixture among
7 our samples are seen in Llangefni and Mid-Cheshire, at 10% and 21% respectively. In
8 agreement with previous results (Capelli et al. 2003), a higher proportion (39%) is
9 seen in the Isle of Man, where there is a known history of Viking presence, and in
10 Penrith (37%), which shows Scandinavian dialect influence (Reaney 1927). The
11 'modern' samples from Wirral and West Lancashire both show 38% Scandinavian
12 admixture, markedly higher than the nearby sample from Mid-Cheshire (21%). This
13 is consistent with the historical and place-name evidence for greater Viking presence
14 in Wirral and West Lancashire than in Mid-Cheshire.

15
16
17
18
19
20
21
22
23
24
25
26
27
28 The 'medieval' sample from West Lancashire shows an increased proportion
29 (51±4%) of Scandinavian ancestry compared to its 'modern' counterpart (38±4%); the
30 equivalent values for Wirral are 47±5% and 38±3%. These differences, revealed by
31 our different sampling strategies, are likely to reflect a change in haplotype
32 frequencies due to post-medieval immigration, and are supported by genetic
33 distances (F_{ST}) between the Norwegian sample and the Wirral and West Lancashire
34 samples. F_{ST} between Norwegians and the West Lancashire 'modern' sample is 0.130,
35 while the value for the 'medieval' sample is only 0.069; corresponding values for the
36 Wirral samples are 0.162 and 0.096.

37
38
39
40
41
42
43
44
45
46
47
48
49
50
51
52
53
54
55
56
57
58
59
60
61
62
63
64
65
66
67
68
69
70
71
72
73
74
75
76
77
78
79
80
81
82
83
84
85
86
87
88
89
90
91
92
93
94
95
96
97
98
99
100
101
102
103
104
105
106
107
108
109
110
111
112
113
114
115
116
117
118
119
120
121
122
123
124
125
126
127
128
129
130
131
132
133
134
135
136
137
138
139
140
141
142
143
144
145
146
147
148
149
150
151
152
153
154
155
156
157
158
159
160
161
162
163
164
165
166
167
168
169
170
171
172
173
174
175
176
177
178
179
180
181
182
183
184
185
186
187
188
189
190
191
192
193
194
195
196
197
198
199
200
201
202
203
204
205
206
207
208
209
210
211
212
213
214
215
216
217
218
219
220
221
222
223
224
225
226
227
228
229
230
231
232
233
234
235
236
237
238
239
240
241
242
243
244
245
246
247
248
249
250
251
252
253
254
255
256
257
258
259
260
261
262
263
264
265
266
267
268
269
270
271
272
273
274
275
276
277
278
279
280
281
282
283
284
285
286
287
288
289
290
291
292
293
294
295
296
297
298
299
300
301
302
303
304
305
306
307
308
309
310
311
312
313
314
315
316
317
318
319
320
321
322
323
324
325
326
327
328
329
330
331
332
333
334
335
336
337
338
339
340
341
342
343
344
345
346
347
348
349
350
351
352
353
354
355
356
357
358
359
360
361
362
363
364
365
366
367
368
369
370
371
372
373
374
375
376
377
378
379
380
381
382
383
384
385
386
387
388
389
390
391
392
393
394
395
396
397
398
399
400
401
402
403
404
405
406
407
408
409
410
411
412
413
414
415
416
417
418
419
420
421
422
423
424
425
426
427
428
429
430
431
432
433
434
435
436
437
438
439
440
441
442
443
444
445
446
447
448
449
450
451
452
453
454
455
456
457
458
459
460
461
462
463
464
465
466
467
468
469
470
471
472
473
474
475
476
477
478
479
480
481
482
483
484
485
486
487
488
489
490
491
492
493
494
495
496
497
498
499
500
501
502
503
504
505
506
507
508
509
510
511
512
513
514
515
516
517
518
519
520
521
522
523
524
525
526
527
528
529
530
531
532
533
534
535
536
537
538
539
540
541
542
543
544
545
546
547
548
549
550
551
552
553
554
555
556
557
558
559
560
561
562
563
564
565
566
567
568
569
570
571
572
573
574
575
576
577
578
579
580
581
582
583
584
585
586
587
588
589
590
591
592
593
594
595
596
597
598
599
600
601
602
603
604
605
606
607
608
609
610
611
612
613
614
615
616
617
618
619
620
621
622
623
624
625
626
627
628
629
630
631
632
633
634
635
636
637
638
639
640
641
642
643
644
645
646
647
648
649
650
651
652
653
654
655
656
657
658
659
660
661
662
663
664
665
666
667
668
669
670
671
672
673
674
675
676
677
678
679
680
681
682
683
684
685
686
687
688
689
690
691
692
693
694
695
696
697
698
699
700
701
702
703
704
705
706
707
708
709
710
711
712
713
714
715
716
717
718
719
720
721
722
723
724
725
726
727
728
729
730
731
732
733
734
735
736
737
738
739
740
741
742
743
744
745
746
747
748
749
750
751
752
753
754
755
756
757
758
759
760
761
762
763
764
765
766
767
768
769
770
771
772
773
774
775
776
777
778
779
780
781
782
783
784
785
786
787
788
789
790
791
792
793
794
795
796
797
798
799
800
801
802
803
804
805
806
807
808
809
810
811
812
813
814
815
816
817
818
819
820
821
822
823
824
825
826
827
828
829
830
831
832
833
834
835
836
837
838
839
840
841
842
843
844
845
846
847
848
849
850
851
852
853
854
855
856
857
858
859
860
861
862
863
864
865
866
867
868
869
870
871
872
873
874
875
876
877
878
879
880
881
882
883
884
885
886
887
888
889
890
891
892
893
894
895
896
897
898
899
900
901
902
903
904
905
906
907
908
909
910
911
912
913
914
915
916
917
918
919
920
921
922
923
924
925
926
927
928
929
930
931
932
933
934
935
936
937
938
939
940
941
942
943
944
945
946
947
948
949
950
951
952
953
954
955
956
957
958
959
960
961
962
963
964
965
966
967
968
969
970
971
972
973
974
975
976
977
978
979
980
981
982
983
984
985
986
987
988
989
990
991
992
993
994
995
996
997
998
999
1000

The surnames that we used to ascertain the 'medieval' samples belong to a wide range of frequencies – from *Otty*, with only 146 bearers in 1998 (www.spatial-literacy.org/UCLnames/) to *Brown*, with 242,765 (*Supplementary Table*). The more frequent names are likely to have had multiple founders and are relatively widespread in Britain, and so may provide less reliable links to medieval presence in the specific regions under study. To address this, we sub-sampled from the two 'medieval' samples by removing surnames with frequencies of greater than 20,000 (*Supplementary Table*), resulting in reduced sample sizes of 26 and 30 for Wirral and

1
2
3 West Lancashire, respectively. We then repeated the admixture analysis. In both
4
5 cases, the proportions of Scandinavian admixture in the sub-sampled 'medieval'
6
7 populations increased further, compared to the original 'medieval' samples:
8
9 admixture proportions in the 'modern' and 'medieval' sub-sampled Wirral
10
11 populations are now $38\pm 3\%$ compared to $51\pm 6\%$, and the corresponding values for
12
13 West Lancashire are $38\pm 4\%$ compared to $53\pm 5\%$.
14
15
16
17
18
19
20
21
22
23
24
25
26
27
28
29
30
31
32
33
34
35
36
37
38
39
40
41
42
43
44
45
46
47
48
49
50
51
52
53
54
55
56
57
58
59
60

Discussion

Since the discovery of the first genetic polymorphisms over a century ago, genetics has contributed much to our understanding of the human past. However, despite advances in ancient DNA technologies, genetic studies remain limited by the requirement to study extant populations, drawing conclusions about the compositions of past populations using various methods of inference. The tempo and mode of change in populations through time is difficult to discern, though we know that migration, drift and alterations in social structure through changes in lifestyle can all influence population structure markedly, and, in some cases, can cause dramatic change in only a few generations (Thomas, Stumpf, and Harke 2006; Chaix et al. 2007).

The association of Y chromosomes with patrilineal surnames, which were established in England some 700 years ago (McKinley 1990), provides a potential tool to investigate changes in population structure over the last few centuries (Manni et al. 2005) – an era in which population growth and migration have been considerable. Here, we have focused on a region in which historical and place-names evidence suggests a past presence of Viking incomers, and demonstrated that samples ascertained using surnames present in medieval times show a markedly greater proportion of Scandinavian ancestry. Our genetic analysis appears to confirm a belief, based on archaeological and place-names evidence, that the northwest of England was once heavily settled by Scandinavians, many of whom were refugees expelled from Ireland in 902AD (Wainwright 1942; Wainwright 1945; Wainwright 1948; Wainwright 1975).

Nearby Mid-Cheshire, with its absence of Viking place-names, shows a much weaker signal of Viking presence than West Lancashire or the Wirral (Table 1). Prior to arriving in Wirral, Ingimund's Scandinavian refugees expelled from Ireland are reported to have made an attempt to settle in Anglesey (Wainwright 1942; Wainwright 1975; Cavill, Harding, and Jesch 2000; Harding 2002); recent archaeological evidence (Redknap 2000) for some Scandinavian activity supports

1
2
3 this, but we observe a low level of Scandinavian admixture there. In contrast,
4
5 significant and lasting settlements appear to have been made in the northwest of
6
7 England and the Isle of Man, and there is genetic evidence (Capelli et al. 2003) (Table
8
9 1) for a substantial contribution in Cumbria (Penrith). The detailed relationship of
10
11 the settlements described in this paper to other Viking activities in the Irish Sea
12
13 region still remains to be unravelled, but the combination of linguistic,
14
15 archaeological, historical, literary and, where possible, genetic evidence will continue
16
17 to provide valuable clues.
18

19
20 Our findings suggest that the approach of surname-based ascertainment is
21
22 promising, and may provide a means to address the issue of population change
23
24 through time, as well as some specific questions in the histories of regions having
25
26 patrilineal surnames. The robustness of conclusions will be improved by the
27
28 inclusion of both 'modern' and 'medieval' samples from places *not* thought to have
29
30 experienced particular population incursions, such as Mid-Cheshire in our study
31
32 (surname-based sampling from this region will form part of a future project). The
33
34 approach relies on the existence of appropriate historical surname lists, which are
35
36 plentiful, and, as we have shown, can also be supplemented by lists based on place-
37
38 names. However, regions in which the time-depth of patrilineal surnames is shallow,
39
40 such as Wales, where patronymic systems persisted to some extent until the 19th
41
42 century (McKinley 1990), will be more difficult to study in this way.
43

44
45 To maximize the benefits of surname-based ascertainment, care needs to be
46
47 taken in sampling. The effects on the Scandinavian admixture proportions of sub-
48
49 sampling from our 'medieval' samples suggest that common surnames should be
50
51 avoided where possible. In this study we sampled one male per surname for each of
52
53 the two regions studied. However, previous studies of the relationships between
54
55 surnames and Y haplotypes have shown the effects of nonpaternities in breaking the
56
57 link between the two (Sykes and Irven 2000; King et al. 2006; McEvoy and Bradley
58
59 2006), and a recent nonpaternity could introduce the Y haplotype of an 'outsider'
60
into a surname which has medieval roots in a study area. To obviate this problem, it

1
2
3 may be desirable to sample more than one male per surname, and to treat the
4 majority haplotype as a founder. In fact, the chance of sampling recently introgressed
5 Y chromosomes increases as sample size per surname increases, but the power to
6 distinguish such chromosomes from the earlier founding types also increases, since a
7 consensus Y chromosome type can more readily be derived.
8
9

10
11
12 Genetic drift is a powerful force patterning the diversity of Y haplotypes, and
13 computer simulations (Sturges and Haggett 1987), as well as the experience of
14 genealogists (McKinley 1990), shows that the effect of drift upon the survival of
15 surnames and on the number of their bearers is correspondingly strong. The degree
16 of drift since the period of surname adoption may have a large impact on the diversity
17 of haplotypes and surnames, and the value of using our approach to compare
18 different populations may be compromised if these populations have experienced
19 different magnitudes of drift. In comparing populations it will be important to take
20 into account historical information on their demographic histories. Furthermore,
21 drift during the 300-400 years between the Viking age and the era in which surname
22 adoption took place may mean that estimates based on surnames may not be an
23 accurate reflection of haplotype frequencies at the earlier time of the introduction of
24 Viking Y chromosomes.
25
26
27
28
29
30
31
32
33
34
35
36
37
38
39

40 The admixture approach we have employed has been useful in providing
41 evidence that surname-based ascertainment reveals some aspects of the past
42 compositions of populations. However, it is clearly not ideal to use 'modern'
43 parental populations to assess admixture in 'medieval' hybrids, and the results are
44 likely to be more reliable if the parental samples themselves could be ascertained in a
45 similar way to the hybrids. A further shortcoming of our admixture analysis is that
46 we have assumed that the non-Celtic contributions are all due to Scandinavians. A
47 more sophisticated approach would also consider an Anglo-Saxon contribution,
48 though distinguishing this from a Danish Viking contribution to more easterly
49 British populations would be difficult, since modern proxies for these two different
50
51
52
53
54
55
56
57
58
59
60

1
2
3 source populations are so similar in their Y-chromosomal haplotype compositions
4
5 (Capelli et al. 2003).
6

7
8 The use of patrilineal surnames in ascertainment provides both the power of
9
10 our approach, and its major limitation, since any analysis of the structure or history
11
12 of populations based on a single genetic locus, the Y chromosome, has inherently
13
14 low power, and population statistics calculated from Y data have high variance
15
16 (Wilson et al. 2001). Furthermore, we can learn nothing about changes in the
17
18 maternal genetic landscape, which is unfortunate, since the role of women in the
19
20 Viking colonizations was as important as that of men (Jesch 1991). Nonetheless, in
21
22 the absence of a time-machine, the link between a haplotype and a cultural marker,
23
24 the surname, may provide the only practical means to access the genetic composition
25
26 of populations in the past. As well as allowing us to investigate the influence of
27
28 migration and drift over the last few centuries in changing the population structure
29
30 of Britain, the method should be applicable to other regions where surnames are
31
32 patrilineal and suitable historical records survive.
33
34
35
36
37
38
39
40
41
42
43
44
45
46
47
48
49
50
51
52
53
54
55
56
57
58
59
60

Acknowledgements

We thank all DNA donors, and BBC Radio Merseyside, BBC Radio Lancashire, the Daily Post, Wirral News, Wirral Globe and Ormskirk Advertiser for assistance in the recruitment of volunteers. We thank Chris Tyler-Smith and Agnar Helgason for help with admixture analysis, Neil Bradman for contributions to haplotyping, and two anonymous referees for useful comments on the manuscript. M.A.J. was supported by a Wellcome Trust Senior Fellowship in Basic Biomedical Science (grant no. 057559), G.R.B., P.L.B. and A.C.L. by the Wellcome Trust, and T.E.K. by a Wellcome Prize Studentship (grant no. 061129). The project was also supported by a 2002 DNA anniversary award of the Biotechnology and Biological Sciences Research Council, and by the Melford Charitable Trust.

Legends to Figures

Figure 1: Location of the Wirral peninsula and West Lancashire.

Sampling locations for the 'modern' samples are shown by filled circles, and unfilled circles show major towns for orientation. Gray triangles show the locations of Scandinavian major place-names (Harding 2002).

Figure 2: Y-chromosomal haplogroups in Wirral and West Lancashire samples, and controls.

Binary marker phylogeny of the Y chromosome, showing mutations on the branches of the tree, and shorthand haplogroup names (Jobling and Tyler-Smith 2003) beneath. Mutations in bold italic type were also typed in the study of Capelli et al. (Capelli et al. 2003). Below the phylogeny are given the number of chromosomes carrying the haplogroup, with percentages in parentheses. n: sample size. h: Nei's unbiased estimator of gene diversity. With the exception of Mid-Cheshire, data on the control populations are from Capelli et al. (Capelli et al. 2003), and in these samples haplogroups G and H are subsumed under F*, since the markers M69 and M201 were not typed. Lancs: Lancashire.

Figure 3: Haplogroup distributions in Wirral, West Lancashire and control populations.

- a) Haplogroup profiles of 'modern' samples from the Wirral and West Lancashire, and from control populations. Sectors in pie charts are colored according to haplogroup, and sector areas are proportional to haplogroup frequency. Lancs: Lancashire.
- b) Haplogroup profiles of 'medieval' samples from the Wirral and West Lancashire, ascertained by surname.

Figure 4: Multidimensional scaling (MDS) plots illustrating the relationships between Wirral, West Lancashire and control populations.

- 1
2
3 a) MDS based on population pairwise F_{ST} values from haplogroup data. Dotted
4 arrows highlight the differences between 'modern' and 'medieval' Wirral and
5 West Lancashire samples. Lancs: Lancashire.
6
7
8
9
10 b) MDS based on population pairwise R_{ST} values from microsatellite data.
11
12
13
14
15
16
17
18
19
20
21
22
23
24
25
26
27
28
29
30
31
32
33
34
35
36
37
38
39
40
41
42
43
44
45
46
47
48
49
50
51
52
53
54
55
56
57
58
59
60

PDF Proof: Mol. Biol. Evol.

Table 1: Admixture proportions in British Isles populations.

Admixed population	n ^a	Proportion Scandinavian ancestry ± standard deviation	Proportion British ancestry ± standard deviation
Llangefni	80	0.10 ± 0.02	0.90 ± 0.02
Mid-Cheshire	46	0.21 ± 0.03	0.79 ± 0.03
Isle of Man	62	0.39 ± 0.04	0.61 ± 0.04
Penrith	90	0.37 ± 0.03	0.63 ± 0.03
Orkney	121	0.50 ± 0.03	0.50 ± 0.03
Shetland	63	0.41 ± 0.04	0.59 ± 0.04
Wirral 'modern'	100	0.38 ± 0.03	0.62 ± 0.03
Wirral 'medieval'	37	0.47 ± 0.05	0.53 ± 0.05
Wirral 'medieval' rarer surnames	26	0.51 ± 0.06	0.49 ± 0.06
West Lancs ^b 'modern'	49	0.38 ± 0.04	0.62 ± 0.04
West Lancs ^b 'medieval'	40	0.51 ± 0.04	0.49 ± 0.04
West Lancs ^b 'medieval' rarer surnames	30	0.53 ± 0.05	0.47 ± 0.05

^a sample size; ^b Lancashire.

Literature cited

- Adams, S. M., T. E. King, E. Bosch, and M. A. Jobling. 2006. The case of the unreliable SNP: Recurrent back-mutation of Y-chromosomal marker P25 through gene conversion. *Forens. Sci. Int.* **159**:14-20.
- Bailey, R., J. Whalley, A. Bowden, and G. Tresise. 2006. A miniature Viking-Age hogback from the Wirral. *Antiquaries J.* **86**:345-356.
- Bennett, J. H. E., and J. C. Dewhurst. 1940. Quarter sessions records with other records of the Justices of the Peace for the County Palatine of Chester 1559-1760 together with a few earlier miscellaneous records deposited with the Cheshire County Council. *Records Soc. Lancs. Ches.* **94**:37-39.
- Booth, P. 1983. Calendar of Cheshire Trailbaston Proceedings 1353. *Ches. History* **12**.
- Bosch, E., F. Calafell, A. González-Neira, C. Flaiz, E. Mateu, H.-G. Scheil, W. Huckenbeck, L. Efremovska, I. Mikerezi, N. Xirrotiris, C. Grasa, H. Schmidt, and D. Comas. 2006. Male and female lineages in the Balkans show a homogeneous landscape over linguistic barriers, except for the isolated Aromuns. *Ann. Hum. Genet.* **70**:459-487.
- Bu'Lock, J. D. 1958. Pre-Norman crosses of West Cheshire and the Norse settlements around the Irish Sea. *Trans. Lancs. Ches. Antiquarian Soc.* **68**:1-11.
- Capelli, C., N. Redhead, J. K. Abernethy, F. Gratrix, J. F. Wilson, T. Moen, T. Hervig, M. Richards, M. P. H. Stumpf, P. A. Underhill, P. Bradshaw, A. Shaha, M. G. Thomas, N. Bradman, and D. B. Goldstein. 2003. A Y chromosome census of the British Isles. *Curr. Biol.* **13**:979-984.
- Cavill, P., S. E. Harding, and J. Jesch. 2000. *Wirral and its Viking Heritage*. English Place-Name Society, Nottingham.
- Chaix, R., L. Quintana-Murci, T. Hegay, M. F. Hammer, Z. Mobasher, F. Austerlitz, and E. Heyer. 2007. From social to genetic structures in central Asia. *Curr. Biol.* **17**:43-48.
- Collingwood, W. G. 1928. Early monuments of West Kirby. Pp. 14-26 in J. Brownbill, ed. *West Kirby and Hilbre. A Parochial History*. Henry Young & Sons Ltd, Liverpool.
- Ekwall, E. 1922. *The Place-names of Lancashire*. Manchester University Press, Manchester.
- Fellows-Jensen, G. 1992. Scandinavian place-names of the Irish Sea Province. Pp. 31-42 in J. A. Graham-Campbell, ed. *Viking treasure from the north-west: the Cuerdale hoard in its context*. National Museums and Galleries on Merseyside Occasional Papers, Liverpool.

- 1
2
3 Fryer, P. 1984. *Staying Power: The History of Black People in Britain*. Pluto Press,
4 London.
- 5
6 Goodacre, S., A. Helgason, J. Nicholson, L. Southam, L. Ferguson, E. Hickey, E. Vega,
7 K. Stefansson, R. Ward, and B. Sykes. 2005. Genetic evidence for a family-
8 based Scandinavian settlement of Shetland and Orkney during the Viking
9 periods. *Heredity* **95**:129-135.
- 10
11 Graham-Campbell, J. A. 1992. *Viking treasure from the north-west: the Cuerdale*
12 *hoard in its context*. National Museums and Galleries on Merseyside
13 Occasional Papers, Liverpool.
- 14
15 Harding, S. 2002. *Viking Mersey: Scandinavian Wirral, West Lancashire and Chester*.
16 Countywise, Birkenhead.
- 17
18 Helgason, A., E. Hickey, S. Goodacre, V. Bosnes, K. Stefansson, R. Ward, and B.
19 Sykes. 2001. mtDNA and the islands of the North Atlantic: estimating the
20 proportions of Norse and Gaelic ancestry. *Am. J. Hum. Genet.* **68**:723-737.
- 21
22 Helgason, A., S. Sigurdardóttir, J. R. Gulcher, R. Ward, and K. Stefansson. 2000a.
23 mtDNA and the origin of the Icelanders: deciphering signals of recent
24 population history. *Am J Hum Genet* **66**:999-1016.
- 25
26 Helgason, A., S. Sigurdardóttir, J. Nicholson, B. Sykes, E. W. Hill, D. G. Bradley, V.
27 Bosnes, J. R. Gulcher, R. Ward, and K. Stefansson. 2000b. Estimating
28 Scandinavian and Gaelic ancestry in the male settlers of Iceland. *Am. J. Hum.*
29 *Genet.* **67**:697-717.
- 30
31 Irvine, W. F., and F. Sanders. 1894. *Wirral Notes and Queries, Being Gleanings*
32 *Historical and Antiquarian*. 2 vols. Willmer Bros., Birkenhead.
- 33
34 Jesch, J. 1991. *Women in the Viking Age*. Boydell, Woodbridge.
- 35
36 Jobling, M. A. 2001. In the name of the father: surnames and genetics. *Trends Genet.*
37 **17**:353-357.
- 38
39 Jobling, M. A., M. E. Hurles, and C. Tyler-Smith. 2004. *Human Evolutionary*
40 *Genetics: origins, peoples and disease*. Garland Science, New
41 York/Abingdon.
- 42
43 Jobling, M. A., and C. Tyler-Smith. 2003. The human Y chromosome: an evolutionary
44 marker comes of age. *Nat. Rev. Genet.* **4**:598-612.
- 45
46 Keyser-Tracqui, C., E. Crubézy, and B. Ludes. 2003. Nuclear and mitochondrial DNA
47 analysis of a 2,000-year-old necropolis in the Egyin Gol Valley of Mongolia.
48 *Am. J. Hum. Genet.* **73**:247-260.
- 49
50 King, T. E., S. J. Ballereau, K. Schürer, and M. A. Jobling. 2006. Genetic signatures of
51 coancestry within surnames. *Curr. Biol.* **16**:384-388.
- 52
53 King, T. E., E. J. Parkin, G. Swinfield, F. Cruciani, R. Scozzari, A. Rosa, S. K. Lim, Y.
54 Xue, C. Tyler-Smith, and M. A. Jobling. 2007. Africans in Yorkshire? The
55
56
57
58
59
60

- 1
2
3 deepest-rooting clade of the Y phylogeny within an English genealogy. *Eur. J.*
4 *Hum. Genet.* **15**:288-293.
- 5
6 Manni, F., B. Toupance, A. Sabbagh, and E. Heyer. 2005. New method for surname
7 studies of ancient patrilineal population structures, and possible application
8 to improvement of Y-chromosome sampling. *Am. J. Phys. Anthropol.*
9 **126**:214-228.
- 10
11
12 McEvoy, B., and D. G. Bradley. 2006. Y-chromosomes and the extent of patrilineal
13 ancestry in Irish surnames. *Hum. Genet.* **119**:212-219.
- 14
15
16 McKinley, R. 1981. *The Surnames of Lancashire, Surnames Series Volume 4.*
17 Leopard's Head Press, London.
- 18
19
20 McKinley, R. A. 1990. *A history of British surnames.* Longman, London.
- 21
22 Peet, G. 1991. Inhabitants of Ormskirk, Scarisbrick with Hurlton, Bickerstaffe,
23 Burscough with Marton, Westhead with Lathom and Skelmersdale who
24 promised to contribute to the stipend of the priest of the altar of Our Lady at
25 Ormskirk, 1366. *Ormskirk Distr. Fam. Historian* **1**:2-6.
- 26
27
28 Reaney, P. H. 1927. *A Grammar of the Dialect of Penrith (Cumberland): Descriptive*
29 *and Historical, with Specimens and Glossary.* Manchester University Press,
30 Manchester.
- 31
32
33 Redknap, M. 2000. *Vikings in Wales.* National Museums and Galleries of Wales,
34 Cardiff.
- 35
36
37 Richards, J. D. 2004. *Viking age England.* Tempus, Stroud.
- 38
39
40 Roberts, S. J. 2002. *A History of Wirral.* Philimore, Chichester.
- 41
42
43 Schneider, S., D. Roessli, and L. Excoffier. 2000. Arlequin ver. 2.0: A software for
44 population genetics data analysis. Genetics and Biometry Laboratory,
45 University of Geneva, Geneva, Switzerland.
- 46
47
48 Sturges, C. M., and B. C. Haggett. 1987. *Inheritance of English surnames.* Hawgood
49 Computing, London.
- 50
51
52 Sykes, B., and C. Irven. 2000. Surnames and the Y chromosome. *Am. J. Hum. Genet.*
53 **66**:1417-1419.
- 54
55
56 Thomas, M. G., N. Bradman, and H. M. Flinn. 1999. High throughput analysis of 10
57 microsatellite and 11 diallelic polymorphisms on the human Y chromosome.
58 *Hum. Genet.* **105**:577-581.
- 59
60
61 Thomas, M. G., M. P. Stumpf, and H. Harke. 2006. Evidence for an apartheid-like
62 social structure in early Anglo-Saxon England. *Proc. Biol. Sci.* **273**:2651-2657.
- 63
64
65 Topf, A. L., M. T. Gilbert, J. P. Dumbacher, and A. R. Hoelzel. 2006. Tracing the
66 phylogeography of human populations in Britain based on 4th-11th century
67 mtDNA genotypes. *Mol. Biol. Evol.* **23**:152-161.

- 1
2
3 Wainwright, F. T. 1942. North-west Mercia AD 871-924. *Trans. Hist. Soc. Lancs. Ches.*
4 **94**:3-55.
5
6 Wainwright, F. T. 1943. Wirral Field Names. *Antiquity* **27**:57-66.
7
8 Wainwright, F. T. 1945. The Scandinavians in Lancashire. *Trans. Lancs. Ches.*
9 *Antiquarian Soc.* **58**:71-116.
10
11 Wainwright, F. T. 1948. Ingimund's Invasion. *Engl. Hist. Rev.* **247**:145-167.
12
13 Wainwright, F. T. 1975. Scandinavian England: Collected Papers *in* H. P. R. Finberg,
14 ed. Phillimore, Chichester.
15
16 Wilson, J. F., D. A. Weiss, M. Richards, M. G. Thomas, N. Bradman, and D. B.
17 Goldstein. 2001. Genetic evidence for different male and female roles during
18 cultural transitions in the British Isles. *Proc. Natl. Acad. Sci. USA* **98**:5078-
19 5083.
20
21
22 Wood, E. T., D. A. Stover, C. Ehret, G. Destro-Bisol, G. Spedini, H. McLeod, L. Louie,
23 M. Bamshad, B. I. Strassmann, H. Soodyall, and M. F. Hammer. 2005.
24 Contrasting patterns of Y chromosome and mtDNA variation in Africa:
25 evidence for sex-biased demographic processes. *Eur. J. Hum. Genet.* **13**:867-
26 876.
27
28
29
30 Y Chromosome Consortium. 2002. A nomenclature system for the tree of human Y-
31 chromosomal binary haplogroups. *Genome Res.* **12**:339-348.
32
33
34
35
36
37
38
39
40
41
42
43
44
45
46
47
48
49
50
51
52
53
54
55
56
57
58
59
60

1
2
3
4
5
6
7
8
9
10
11
12
13
14
15
16
17
18
19
20
21
22
23
24
25
26
27
28
29
30
31
32
33
34
35
36
37
38
39
40
41
42
43
44
45
46
47
48
49
50
51
52
53
54
55
56
57
58
59
60

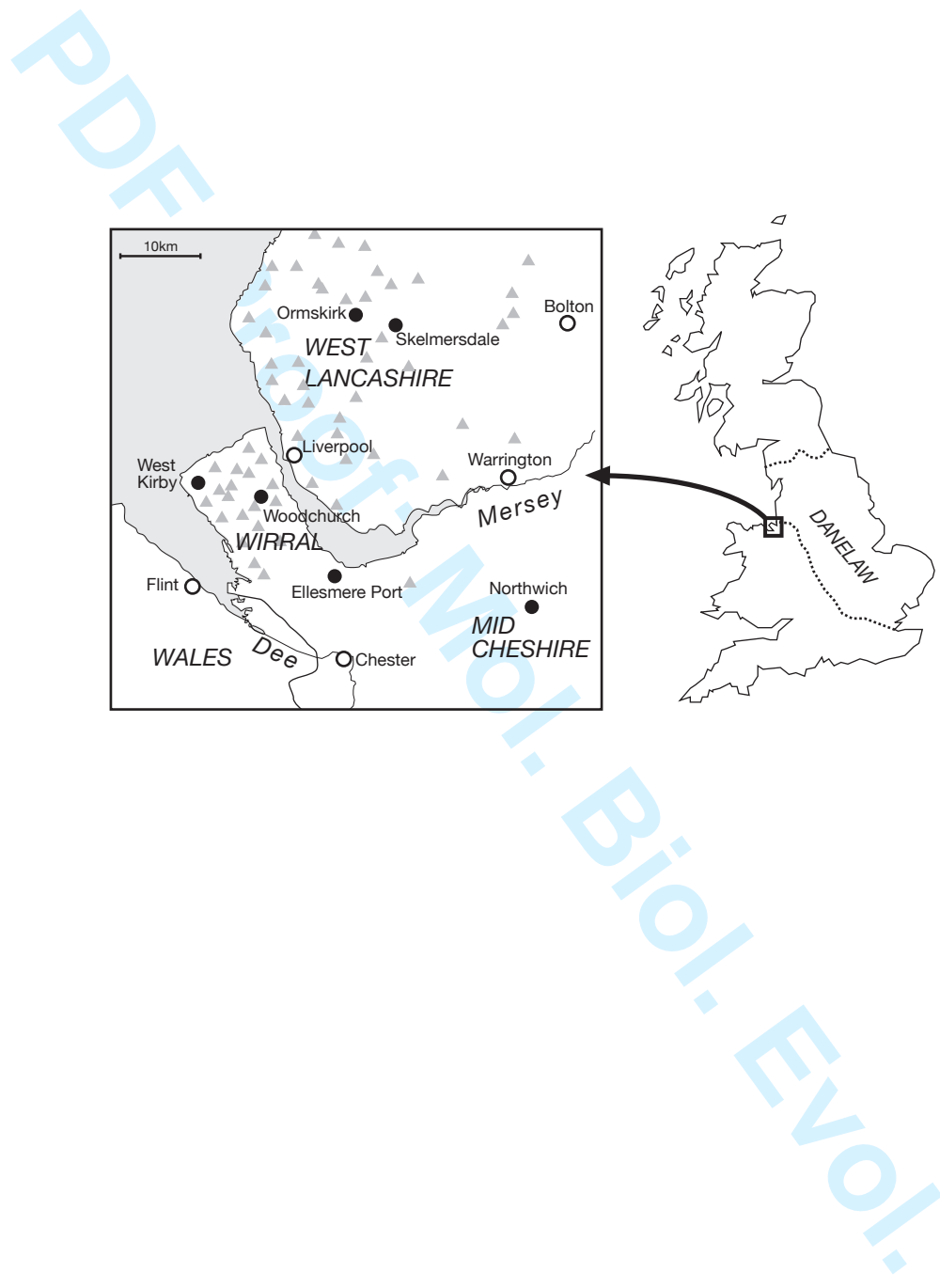


Figure 1

1
2
3
4
5
6
7
8
9
10
11
12
13
14
15
16
17
18
19
20
21
22
23
24
25
26
27
28
29
30
31
32
33
34
35
36
37
38
39
40
41
42
43
44
45
46
47
48
49
50
51
52
53
54
55
56
57
58
59
60

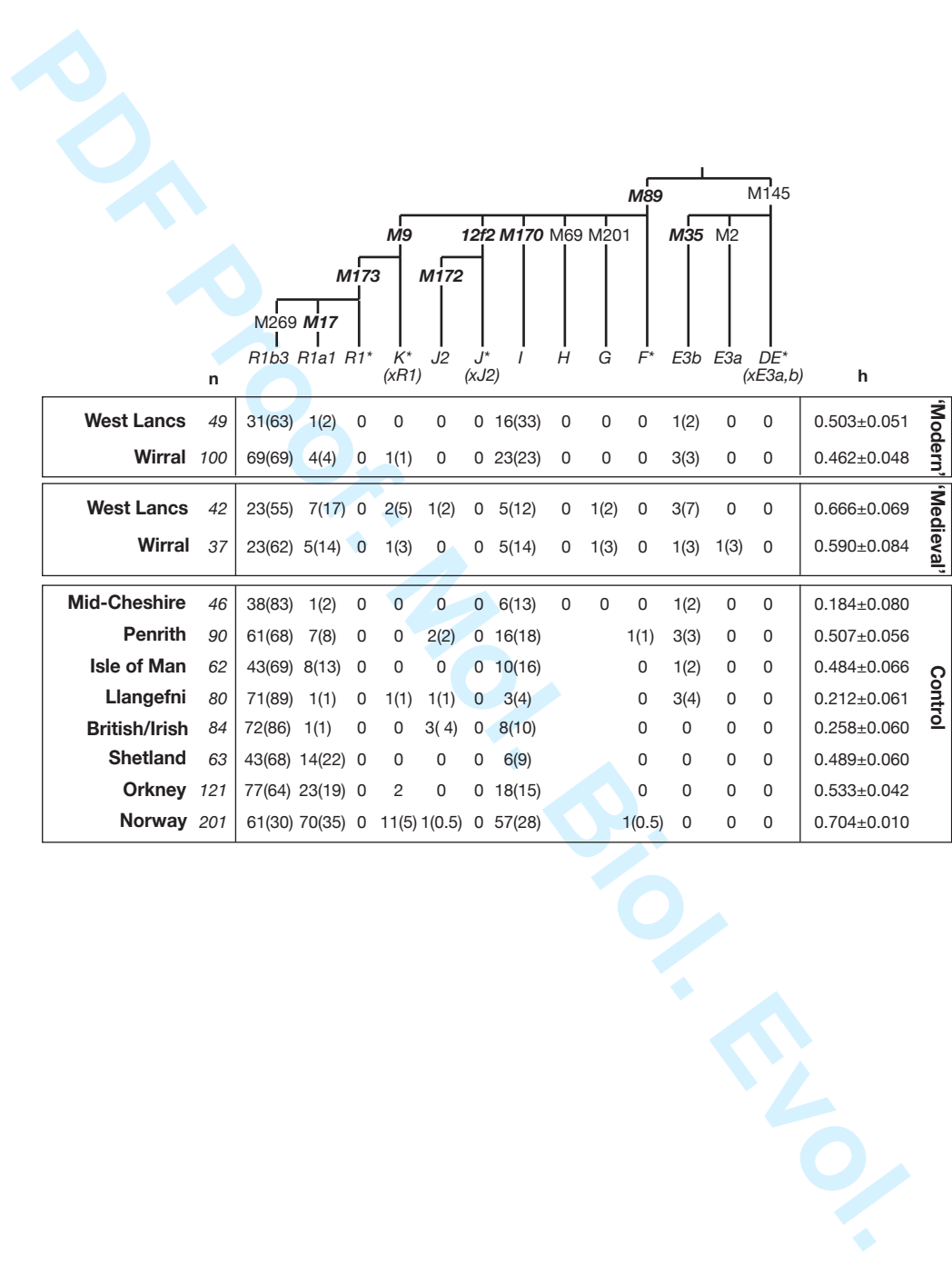


Figure 2

1
2
3
4
5
6
7
8
9
10
11
12
13
14
15
16
17
18
19
20
21
22
23
24
25
26
27
28
29
30
31
32
33
34
35
36
37
38
39
40
41
42
43
44
45
46
47
48
49
50
51
52
53
54
55
56
57
58
59
60

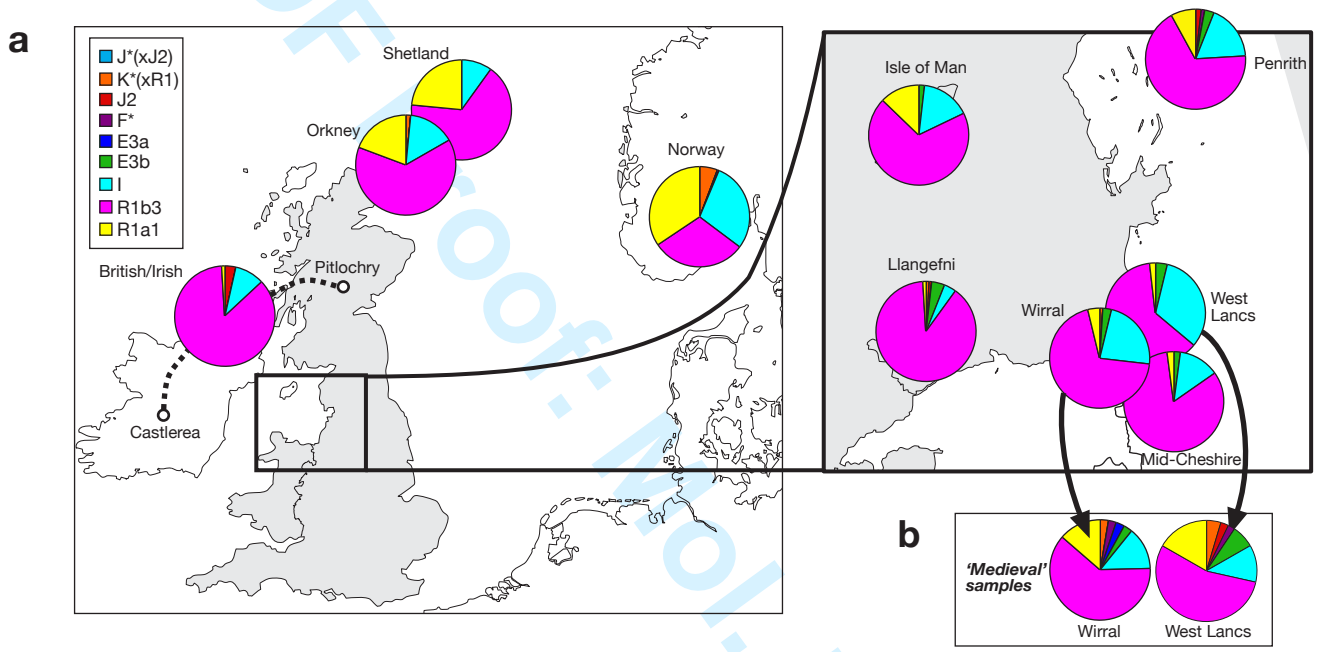


Figure 3

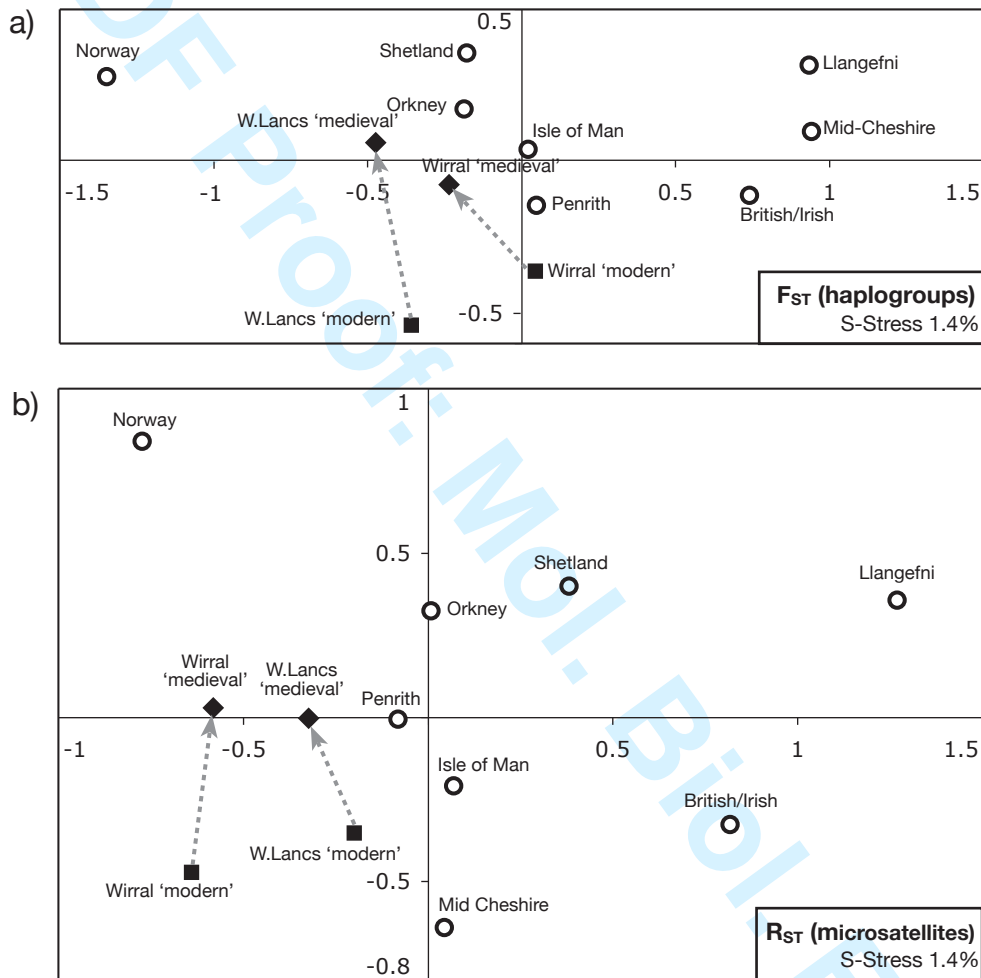
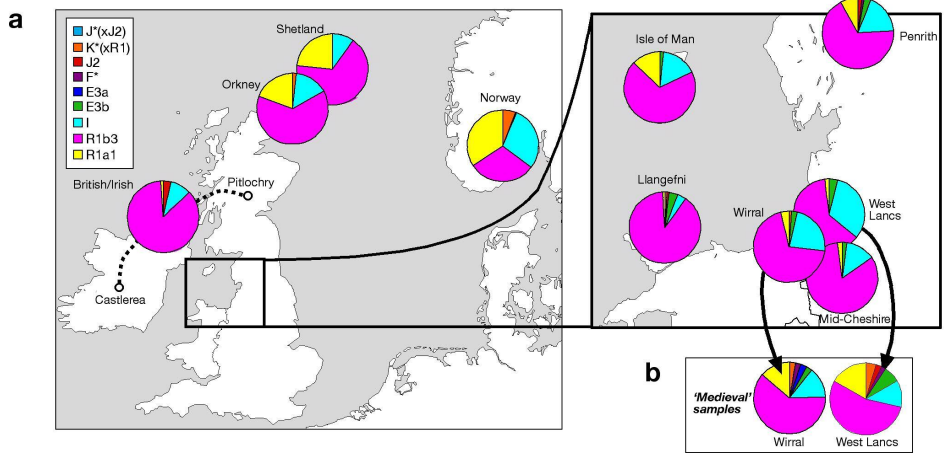


Figure 4

1
2
3
4
5
6
7
8
9
10
11
12
13
14
15
16
17
18
19
20
21
22
23
24
25
26
27
28
29
30
31
32
33
34
35
36
37
38
39
40
41
42
43
44
45
46
47
48
49
50
51
52
53
54
55
56
57
58
59
60



jpg version supplied here, since pdf contains a rendering problem with the sea/land colour
 185x84mm (300 x 300 DPI)