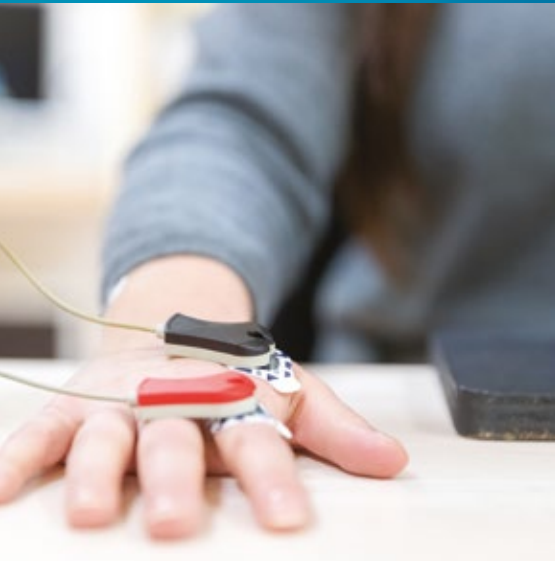




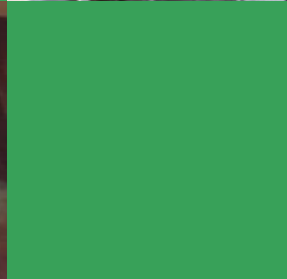
University of
Nottingham

UK | CHINA | MALAYSIA

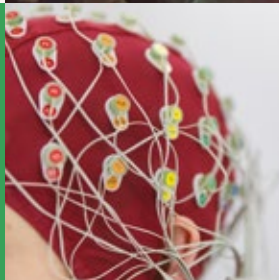
Psychology



Investigate it



Challenge it



nottingham.ac.uk/psychology

Undergraduate guide 2019

Contents

Why study with us?	4
Our courses	5
Our research	12
How will I study?	14
Careers and Employability	16
How to apply	18
Experience it	19

British Psychological Society accredited courses



Inspiring environment for the scientific study of the mind and brain

Top 10 for research power in the UK*

* Research Excellence Framework (for psychology, psychiatry and neuroscience), 2014.

Strong research ethos



“The psychology course at Nottingham is fantastically structured, allows access to state-of-the-art facilities and provides the opportunity for you to study in Malaysia. The content covers a variety of areas within psychology, so there’s something for everyone. My favourite topic has been the biological module, as I am fascinated by the human brain and how it relates to behaviour.”
Izzy Dean, BSc Psychology



Stimulating, diverse and dynamic field of study

Gain skills to conduct psychological research



Enthusiastic undergraduate community



90.7% of undergraduates

from the School of Psychology secured work or further study within six months of graduation*



*Known destinations of full-time home undergraduates who were available for work 2015/16.

Studying psychology at Nottingham

Psychology is the scientific study of brain and behaviour, and is one of the most exciting, relevant and rapidly changing fields of study. It encompasses the perceptions, thoughts, feelings and actions of people from infancy to old age, as well as related phenomena in groups, organisations and societies, animals, and computers.

Our school community

From the peer mentoring scheme, to our esteemed society PsychoSoc, our students and staff are continually working together to create a friendly, supportive learning environment. Throughout your time at Nottingham you will have a personal tutor, overseeing your academic and personal development.

Research excellence

You will be taught by staff who are research active and, in many cases, international leaders in their fields. In the latest Research Excellence Framework the school was part of a unit of assessment that was ranked in the top 10 in the UK for research power. Read more about our ground-breaking research on page 12.

Professional accreditation

Our BSc Psychology, MSci Psychology, and BSc Psychology and Cognitive Neuroscience degrees are accredited by the British Psychological Society, so you can be assured that the curriculum taught on these courses is determined by the Quality Assurance Agency's benchmark statements for psychology.

Our courses

Degree title	UCAS code	Duration	A levels	IB
Single honours				
BSc Psychology	C800	3 years	AAB [^]	36-34 ^{^^}
BSc Psychology and Cognitive Neuroscience	C850	3 years	AAB [^]	36-34 ^{^^}
MSci Psychology	C803	4 years	AAA ^{^^^}	36-34 ^{^^}

[^]Including one science subject, plus GCSE in English and maths at 5 or above. Candidates without an A level in a science subject may be asked to attain AAA.

^{^^}With at least 6, 6, 5 at Higher Level.

^{^^^}Including one science subject, plus GCSE in English and maths at 5 or above. Candidates without an A level in a science subject may be asked to attain A*AA.

Foundation courses

Applicants who are not eligible for direct entry to undergraduate study may be able to apply for a foundation course. Find out more at nottingham.ac.uk/foundationcourses

English language requirements

IELTS 6.5 (no less than 6.0 in any element). For details of other English language tests and qualifications we accept, please see nottingham.ac.uk/go/alternativerequirements

Academic English preparation

If you require additional support to take your language skills to the required level, you may be able to attend a pre-sessional course at the Centre for English Language Education, which is accredited by the British Council for the teaching of English in the UK.

Students who successfully complete the pre-sessional course to the required level can progress onto their chosen degree course without retaking IELTS or equivalent. Find out more at nottingham.ac.uk/cele



BSc Psychology

Our programmes are designed to offer you a structured introduction to key topics in psychology, and the opportunity to acquire and develop the fundamental skills of a psychologist.

Year one

In your first year we begin with the core areas of biological, cognitive, developmental and social psychology. Your modules will cover theoretical principles as well as the applied aspects of these subjects – for example in education, engineering and clinical settings.

Lectures and seminars on these core areas are complemented by a module in statistical methods of analysis and a practical methods module, which will teach you how to carry out psychological experiments. In addition, you will be able to choose a number of modules from departments across the University, such as business, languages, law, and philosophy.

Year two

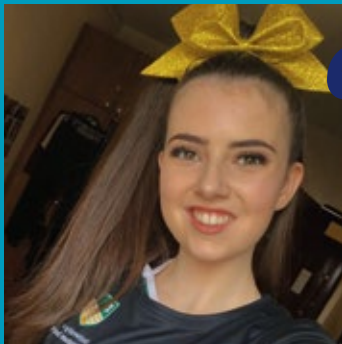
Psychology modules follow on from the first year, tackling topics in greater depth. In addition to pursuing core modules you will also continue your training in research methods.

Greater independence in undertaking research is expected, and you will take part in practical sessions over a series of five-week group projects. Further modules in statistics develop your skills.

Year three

In your final year you are able to tailor the course to your personal interests by choosing from a wide range of optional modules. These options include branches of applied psychology such as clinical psychology, forensic and mental health, neuroscience or educational psychology, as well as advanced options dealing with topics of current importance in research. Many of these modules will allow you to undertake a dissertation for further credit.

You will also have the opportunity to complete a large-scale, independent research project. You'll design and carry out the research yourself, with help and guidance from your project supervisor.



“The University of Nottingham is definitely a diverse and fully inclusive place to study. Through living and studying here I have gained so much experience, many friendships, and have received an ongoing level of teaching that is second to none. The School of Psychology staff are approachable, engaging and enthusiastic. They continually drive both my own and my peers' desire to study, and to succeed in both our psychology degree and future.”

Emily Gallagher, BSc Psychology

Typical modules

Year one

Core

- Social Psychology
- Practical Methods and Seminars in Psychology
- Developmental Psychology
- Statistical Methods One
- Cognitive Psychology One
- Biological Psychology
- Seminars and Individual Meetings

Year two

Core

- Conceptual and Historical Issues in Psychology
- Social and Developmental Psychology
- Neuroscience and Behaviour
- Cognitive Psychology Two
- Personality and Individual Differences
- Practical Methods Two
- Statistical Methods Two
- Seminars and Individual Meetings

Year three

Core

- Research Project

Optional

- Cognitive Development and Autism
- Forensic and Mental Health
- Clinical Psychology
- Altruism, Cooperation and Helping
- Neuropsychology of Action: The Body in the Brain
- Educational Psychology
- Neuropsychology and Applied Neuroimaging
- Mechanisms of Learning and Psychopathology
- Seminars and Individual Meetings

Modules may change, for example due to curriculum developments. The above list is a sample of typical modules that we offer, not a definitive list. The most up to date information can be found on our website at nottingham.ac.uk/ugstudy/psychology



BSc Psychology and Cognitive Neuroscience

Cognitive neuroscience is the study of the ways in which our brains support our thoughts, feelings and actions. You will develop an in-depth understanding of psychology, knowledge about brain structure and function, as well as ways of measuring brain activity.

This course links cognitive neuroscience practicals and modules with core elements of our BSc Psychology course.

Year one

In your first year you will study the same psychology topics in the same classes as your peers on the BSc Psychology course. In addition, you will be able to choose modules in other disciplines, such as biology or neuroscience.

Year two

In addition to core psychology modules, in the second year there is a module in specialised research methods, which will introduce you to a range of cognitive neuroscience methods such as functional magnetic resonance imaging, magnetoencephalography, electroencephalography, and transcranial magnetic stimulation.

Year three

During the third year you will focus on understanding the relationships between our brains, our mental lives, and our behaviours. Advanced modules in cognitive neuroscience are offered, covering areas including learning, memory, perception, action, typical and atypical development and the brain basis of psychological disorders. Your research project can also be tailored to your interests.

“The campus has a very welcoming environment which really inspires me to achieve. I volunteer weekly at a brain injury rehabilitation centre, which has been a great way to explore my interests further. I chose to study psychology at Nottingham because it provided the opportunity to study at another campus overseas. This was one of the best decisions I have ever made!”

Sabrina Liew,
BSc Psychology and Cognitive Neuroscience



Typical modules

Year one

Core

- Social Psychology
- Practical Methods and Seminars in Psychology
- Developmental Psychology
- Statistical Methods One
- Cognitive Psychology One
- Biological Psychology
- Seminars and Individual Meetings

Year two

Core

- Conceptual and Historical Issues in Psychology
- Social and Developmental Psychology
- Neuroscience and Behaviour
- Cognitive Psychology Two
- Personality and Individual Differences
- Practical Methods in Psychology and Cognitive Neuroscience
- Statistical Methods Two
- Seminars and Individual Meetings

Year three

Core

- Research Project

Optional

- Cognitive Development and Autism
- Forensic and Mental Health
- Clinical Psychology
- Altruism, Cooperation and Helping
- Neuropsychology of Action: The Body in the Brain
- Educational Psychology
- Neuropsychology and Applied Neuroimaging
- Mechanisms of Learning and Psychopathology
- Seminars and Individual Meetings

Modules may change, for example due to curriculum developments. The above list is a sample of typical modules that we offer, not a definitive list. The most up to date information can be found on our website at nottingham.ac.uk/ugstudy/psychology



MSci Psychology

Our four-year MSci course is designed for students considering a career in research.

The course is intellectually challenging and benefits from the strong research culture in our school. The teaching programme will provide you with a deep understanding of psychological theories and concepts, and the knowledge, analytical tools and skills you need to evaluate and conduct empirical research.

Year one to three

You will follow the BSc Psychology or BSc Psychology and Cognitive Neuroscience programme.

Year four

In the fourth year, you will be able to choose from a number of advanced modules, such as Research Methods, Functional Imaging Methods, and Professional Skills. You will also have the opportunity to complete extended research projects spanning the third and final years of your four-year course.

We believe that conducting research on the same project over year three and four will be advantageous if you decide to apply for a PhD place on completion of your MSci.



Typical modules

Year one	Year two	Year three	Year four (MSci only)
<p>Core</p> <ul style="list-style-type: none"> ■ Social Psychology ■ Practical Methods and Seminars in Psychology ■ Developmental Psychology ■ Statistical Methods One ■ Cognitive Psychology One ■ Biological Psychology ■ Tutorials 	<p>Core</p> <ul style="list-style-type: none"> ■ Conceptual and Historical Issues in Psychology ■ Social and Developmental Psychology ■ Neuroscience and Behaviour ■ Cognitive Psychology Two ■ Personality and Individual Differences ■ Practical Methods Two ■ Practical Methods in Psychology and Cognitive Neuroscience ■ Statistical Methods Two ■ Tutorials 	<p>Core</p> <ul style="list-style-type: none"> ■ Research Project ■ Tutorials <p>Optional</p> <ul style="list-style-type: none"> ■ Cognitive Development and Autism ■ Forensic and Mental Health ■ Clinical Psychology ■ Altruism, Cooperation and Helping ■ Neuropsychology of Action: The Body in the Brain ■ Educational Psychology ■ Neuropsychology and Applied Neuroimaging ■ Mechanisms of Learning and Psychopathology 	<p>Core</p> <ul style="list-style-type: none"> ■ Advanced Methods in Psychology ■ Functional Imaging Methods ■ Professional Skills



Modules may change, for example due to curriculum developments. The above list is a sample of typical modules that we offer, not a definitive list. The most up to date information can be found on our website at nottingham.ac.uk/ugstudy/psychology



Our research

Research in our school is diverse and covers four key topics. We have many links with other academic schools and institutes in Nottingham and at other prestigious universities. The school also works closely with business partners and charities. All of these partnerships provide opportunities for exciting and innovative research projects.

Our four core areas of research are:

Behavioural neuroscience

We investigate fundamental learning and memory processes. We apply our work to understand the causes of conditions such as schizophrenia with a view to ultimately developing interventions that will help people with neurological and psychological conditions.

Cognition and cognitive neuroscience

We study mental functions such as perception, memory, language and emotions, and investigate how they are supported by our brains. We do this by combining psychological assessments and tests with cutting edge techniques for measuring and stimulating human brain activity.

Human development and learning

We study the processes underlying learning and cognitive development. The school has particular strengths in the study of typically developing children, and children and adults with autism and Asperger's syndrome. We work with schools, charities and support groups to ensure that our work is relevant to their concerns and needs, and we share our knowledge with them.

Personality, social psychology and health

We examine how the roles played by the thoughts, feelings, attitudes and actions of individuals and groups influence decision-making, particularly in relation to health behaviours, pro- and anti-social actions and risk-taking.

Be a part of our research

Cutting-edge research makes the University an attractive place to work for lecturers who are experts in their field. You will benefit from our teaching staff's passion for and commitment to what they do. As you progress into your own research projects, you will be surrounded by experts who can advise and inspire you.

Engaging study, incredible results

Group teaching sizes are small enough for us to know all of our students as individuals and the total class size is large enough to allow us to offer a wide range of modules, meaning that you will be able to tailor your degree to your specific interests.

Teaching

We use a variety of teaching methods ranging from lectures covering the fundamentals of psychology to practical classes and methods workshops, in which we will help you to develop the skills necessary to conduct hands on psychological research. Interactive small-group sessions run throughout the course. These will support your learning by linking to the lecture content of the modules you are taking.

Personal tutor

At the start of your course you will be assigned a personal tutor who you will meet regularly in a small group. This is an opportunity for you to develop transferable skills such as essay writing, critical thinking and presentation skills. Seminars are also a chance for you to work with your fellow students.

Research projects

Practical sessions will run in the first and second years, and will encourage you to develop your skills as an independent researcher.

In the third year, you will complete a large scale independent research project, where you will take the initiative in designing and carrying out the research yourself with help and guidance from your project supervisor. These are high-calibre pieces of work, some of which go on to be published in scientific journals.

Practical experience

Throughout the course, you will have many opportunities to participate in mentoring schemes plus scientific and public engagement activities. In the second year, you will be able to apply for a paid summer internship within the school, allowing you to gain academic and practical research experience and occasionally have your name included on a published scientific article.

How will I be assessed?

Our courses are assessed in a variety of ways, including written exams, coursework assignments, dissertations, essays, oral presentations, posters and laboratory reports. The degree classification is based on marks gained from all but the first year of study.

Develop transferable skills including oral and written communication, data processing and interpretation, and presentation techniques.

Outstanding careers support

As a Nottingham psychology graduate you will be well prepared for a wide range of employment and postgraduate study opportunities.

The skills you'll develop will provide an excellent basis for many careers, including management, social work, teaching, marketing, and advertising. Our undergraduate courses also provide an excellent grounding for a research career or professional postgraduate training in areas of applied psychology, and approximately half of our students continue in the discipline after graduation.

Recent graduate destinations include the fields of:

- Clinical psychology
- Counselling psychology
- Educational psychology
- Forensic psychology
- Sport and exercise psychology

£21,016



was the average starting salary, with the highest being £35,000*



Get the Advantage

The career-enhancing Nottingham Advantage Award recognises and rewards your extracurricular activities. With a choice of over 200 modules, you can hone the key skills employers are looking for. From developing your leadership skills and learning a language to public speaking and volunteering, you will leave university with demonstrable experience that sets you apart from other graduates. For further information, visit nottingham.ac.uk/careers/advantage

Career-focused events

The School of Psychology organises a variety of careers events throughout the year to inform you about career opportunities and help improve your employability. You will be able to attend symposia on clinical, health and forensic psychology, meet with recent alumni and attend workshops on postgraduate opportunities.

We hold weekly drop-in sessions with a professional careers adviser, who will be able to answer all your careers questions, discuss your career plans and review your CV, application forms or personal statements.

Amplify your potential

Whether you already have a plan or need some inspiration, your Careers and Employability Service is here to help.

Academic excellence and employability go hand in hand at Nottingham. Your course, and the diverse student experiences we offer, will enable you to develop the skills and professional competencies required to thrive in the job market of the future.

We will help you explore your options, so you feel confident making choices about what you want to achieve. Our team will support you as you build your CV, search for jobs, prepare applications, practise your interview technique, and much more.



Our careers team are on hand to offer advice and guidance after you graduate.

*Known destinations of full-time home undergraduates who were available for work 2015/16. Salaries are calculated based on the median of those in full-time paid employment within the UK.

How do I apply?

How to apply

All applications for undergraduate study at Nottingham, including applications by international students, must be made through UCAS.

You can apply online at ucas.com and will be notified of decisions through UCAS Track.

Your personal statement

This is the section of your UCAS form that tells us most about you, and you should make the best use of it. Be as specific and detailed as you can – we would like to see that you are a student who can work hard, be self-motivated and make the best possible use of the opportunities that our courses offer you. We would also like to hear about any skills you have gained through extracurricular activities.

Alternative qualifications

In this brochure you will find our A level and International Baccalaureate entry requirements but we accept a much broader range of qualifications. For more details, visit nottingham.ac.uk/ugstudy/applying

GCSE reform

Following the reform of GCSE grading in England from A*-G to 9-1, we have adopted Ofqual's recommended equivalence. This means that GCSE grade A*=9, A=7, B=5/6 and C=4. GCSE qualifications taken outside of the UK will still be graded A* to G.

Around one-third of our UK students receive our means-tested core bursary, worth up to £2,000 a year (2018 entry figure; subject to change). For details, see nottingham.ac.uk/financialsupport

Flexible admissions policy

In recognition of our applicants' varied experience and educational pathways, we employ a flexible admissions policy. If we judge that your situation has adversely affected your achievement, then we will consider this when assessing your academic potential. Some courses may make a slightly lower offer. For more information about this policy, see nottingham.ac.uk/ugstudy/applying

Mature applicants

We encourage applications from mature applicants who have a significant gap in education. You should apply through UCAS. Find out more at nottingham.ac.uk/mature

International applicants

The University provides a range of information and advice for international applicants. If you are unable to attend an open day, we can meet you in your country at one of our overseas events or arrange an individual visit to the University. For further information please visit nottingham.ac.uk/go/international-applicants

Deferred entry

Applicants who wish to defer their entry by a year will not be at a disadvantage. Please tell us something about your plans for your gap year in your UCAS personal statement.

Equal opportunities policy

The University aims to create the conditions whereby students and staff are treated solely on the basis of their merits, abilities and potential, regardless of gender, race, colour, nationality, ethnic or national origin, age, socio-economic background, disability, religious or political beliefs, trade union membership, family circumstances, sexual orientation or other irrelevant distinction.

Experience it



Live and study abroad as part of many courses

nottingham.ac.uk/studywithus/studyabroad

Accommodation to suit every budget and personal choice

nottingham.ac.uk/accommodation



10 minutes from the city for music, food and shopping

nottingham.ac.uk/nottinghamlife

200+

student-led groups, clubs and societies at your Students' Union

su.nottingham.ac.uk



Student Service Centres on all UK campuses for support and advice

nottingham.ac.uk/student-services



One of the UK's leading universities for sport* with over 70 student sports clubs

nottingham.ac.uk/sport

* British Universities and Colleges Sports Standings, 2016-17.

Join in with the vibrant musical life on campus and in the city

nottingham.ac.uk/music/performance

Choose from 9 modern languages

to study alongside your course

nottingham.ac.uk/language-centre





University of
Nottingham

UK | CHINA | MALAYSIA

For undergraduate enquiries contact:
Student Recruitment Enquiries Centre



+44 (0)115 951 5559



nottingham.ac.uk/contact



@NottinghamPsychology



@UoNScience

nottingham.ac.uk/psychology

This publication
is available in
alternative formats:
+44 (0)115 951 5559



© University of Nottingham 2018.
All rights reserved. Printed June 2018.

This brochure has been drafted in advance of the academic year to which it applies. Every effort has been made to ensure that the information contained in this brochure is accurate at the time of publishing, but changes (for example to course content) are likely to occur given the interval between publication and commencement of the course. It is therefore very important to check our website for any updates before you apply for the course by following nottingham.ac.uk/ugstudy. Where there is a difference between the contents of this brochure and our website, the contents of the website take precedence.