



## Centre for Evidence-based Veterinary Medicine Newsletter



*The CEVM's Imogen Richens (2<sup>nd</sup> from left) celebrates passing her PhD viva, with supervisors (from left): Marnie Brennan, Wendela Wapenaar and Pru Hobson-West.*

Welcome to the latest Newsletter from the [Centre for Evidence-based Veterinary Medicine](#) (CEVM), which updates you on the CEVM's current activities. We are producing regular newsletters to keep you informed of the work of the CEVM.

This quarter, our newsletter includes information on:

- **Brand new CPD days** at the School of Veterinary Medicine and Science, The University of Nottingham
- **The CEVM Roadshow**- bringing food and CPD right to your doorstep
- **Vet AllTrials**- a unique opportunity to make a difference in veterinary research
- **New publications** to read
- **Upcoming presentations** by CEVM members

Please forward this e-mail on to any colleagues who you think may be interested—they can sign up for future Newsletters using our mailing list (<http://lists.nottingham.ac.uk/mailman/listinfo/cevm-mailing-list>).

## CPD

The CEVM are running two CPD courses this year at the [School of Veterinary Medicine and Science](#) The University of Nottingham:

- **Practical approach to integrating principles of evidence-based vet medicine into the workplace**

Wednesday 14<sup>th</sup> October

[http://store.nottingham.ac.uk/browse/extra\\_info.asp?compid=1&modid=5&deptid=37&catid=72&prodid=473](http://store.nottingham.ac.uk/browse/extra_info.asp?compid=1&modid=5&deptid=37&catid=72&prodid=473)

- **Sources of evidence for practitioners: what do I use and which ones are the best?**

Wednesday 2<sup>nd</sup> December

[http://store.nottingham.ac.uk/browse/extra\\_info.asp?modid=5&deptid=37&catid=72&prodid=474&coursedate=911](http://store.nottingham.ac.uk/browse/extra_info.asp?modid=5&deptid=37&catid=72&prodid=474&coursedate=911)

Both courses are now available to book online, priced at £200 each.

## CEVM Roadshow 2015

We look forward to meeting many of our newsletter subscribers this year, on the CEVM roadshow! We are hitting the road and bringing Evidence-based Veterinary Medicine (EVM) CPD to your doorstep. The 2 hour evening events will cover why EVM is important, how you can incorporate it into your practice and what EVM resources exist that can be used to help improve care. There will be time for questions and discussion too - we want to hear your opinions about EVM and find out what the CEVM can do for you.

Everyone is welcome on the roadshow, so whether you are a vet, veterinary nurse, student or practice manager, working in first opinion practice, a referral centre, academia, APHA, industry or anywhere else—join us on the road!

Food will be provided from 7.30pm and the CPD will start at 8pm. You will gain 2 hours of accredited CPD when you attend.

Cost (including food): £25 per person, £15 for students.

Book your place [here](#).

<b><u>Dates</u></b>	<b><u>Locations</u></b>
Wednesday 2nd September	Dogs Trust Darlington, Hill House Farm, Sadberge, Co Durham DL2 1SL
Thursday 3rd September	Dogs Trust West Calder, Bentyhead, West Calder, West Lothian, EH55 8LE
Tuesday 8th September	Aylesbury Holiday Inn, New Road, Weston Turnville, Aylesbury HP22 5QT
Tuesday 22nd September	Cardiff Holiday Inn, North M4, Junction 32. Merthyr Rd, Tongwynlais, Cardiff CF15 7LH
Wednesday 23rd September	SW Taunton Holiday Inn, M5, Junction 25. Deane Gate Avenue, Taunton TA1 2UA
Tuesday 20th October	University of Liverpool, School of Veterinary Science, Leahurst Campus, Neston, Wirral CH64 7TE
Wednesday 21st October	Telford Holiday Inn, St Quentin Gate, Telford TF3 4EH
Tuesday 17th November	Flixton village hall, Flixton Bungay Suffolk NR35 1NU
Wednesday 18th November	Ashford North Holiday Inn, Maidstone Road, Hothfield, Ashford Kent TN26 1AR
Tuesday 8th December	CAFRE, Greenmount campus, Antrim BT41 4PS
Wednesday 9th December	School of Veterinary Medicine and Science, University of Nottingham, Sutton Bonington Campus, Loughborough LE12 5RD

More information available here:

<http://www.nottingham.ac.uk/vet/servicesfortheveterinaryprofession/continuingprofessionaldevelopment/cevm-roadshow.aspx>

### **VetAllTrials**

An international group within the veterinary profession are working together to develop a veterinary version of [All Trials](#). This initiative has been very successful in the human medical field at drawing attention to the importance of registering and publishing all clinical trials involving patients. By doing this patients can be reassured that their involvement in trials is making a real difference, patients and doctors can make evidence-based decisions regarding the most appropriate treatments, and duplication in research can be avoided.

It is important that the veterinary profession and the animal owning public know what trials have been conducted or are ongoing, and what they hope to achieve. We would also like to see all trial

outcomes reported and made available using existing open access, content and data licensing models. This will avoid patients, owners and veterinarians becoming involved in trials whose results are never made available. It will also improve the evidence base available to enable properly-informed clinical decision making.

How you can help:

- Find out more about Vet All Trials [here](#).
- Complete the [survey](#) to tell us you are interested in the 'Veterinary All Trials' initiative and think it is important.
- Sign the [petition](#) to register your support.
- Subscribe to [email updates](#)
- Follow on twitter: @vetalltrials

Together, through this initiative, we can make a real difference to the quality and reporting of veterinary research, and in the welfare of the animals in veterinary care.

### **New publications**

#### [Survey of the UK veterinary profession 2: Sources of information used by veterinarians](#)

Nielsen TD, Dean RS, Massey A and Brennan ML (2015).

Published online by *Veterinary Record*

#### [Recognising the value of assistance dogs in society](#)

Audrestch HM, Whelan CT, Grice D, Asher L, England GCW, Freeman SL (2015)

*Disability and Health Journal*

In Press Accepted Manuscript, published online 22 July 2015

### **BestBETs for Vets**

BestBETs are now being regularly published in the [Veterinary Record](#).

In addition, three new BETs have been added to our online database **BestBETs for Vets** (<http://bestbetsforvets.org>):

- Roll and toggle versus right abomasopexy in cattle with an LDA  
<https://bestbetsforvets.org/bet/179>
- Blood glucose as a prognostic indicator for dogs with head trauma:  
<https://bestbetsforvets.org/bet/229>
- The use of intra-abdominal antibiotics during caesarean section in cows:  
<https://bestbetsforvets.org/bet/345>


BETs (best evidence topics) are simple reviews of the current best evidence available to answer simple, common and specific clinical questions. They are designed to be a quick and achievable method of enabling the incorporation of evidence into clinical practice. BETs start with a very specific clinical question. A systematic literature search is then done to find available evidence. The relevant literature is critically appraised for quality and a "bottom line" (the answer to the question) is reached based on this evidence. BETs do not tell you what to do, they tell you about the evidence on a certain topic—the aim is to give an unbiased view of the evidence found.

## VetSRev database

**VetSRev** ([www.nottingham.ac.uk/cevm/vetsrev](http://www.nottingham.ac.uk/cevm/vetsrev)), our database of systematic reviews relevant to veterinary medicine and science, continues to grow as we search for newly published reviews each month. The total number of systematic reviews on the database is 499 at the time of writing.

Examples of recently added reviews in VetSRev include:

- [Systematic review of ground reaction force measurements in cats](#)  
Schnabl E, Bockstahler B (2015)  
*The Veterinary Journal* [Epublication ahead of print] Available online 27<sup>th</sup> May 2015
- [Effects of dietary fat on fertility of dairy cattle: A meta-analysis and meta-regression](#)  
Rodney RM, Celi P, Scott W, Breinhild K, Lean IJ (2015)  
*Journal of Dairy Science* **98** (8): 5601-20  
[Epublication: 2015 June 17<sup>th</sup>]
- [Hunting and hallucinogens: The use psychoactive and other plants to improve the hunting ability of dogs](#)  
Bennett BC, Alarcón R (2015)  
*Journal of Ethnopharmacology* **171**: 171-183  
[Epublication 2015 May 28<sup>th</sup>]

You can keep up to date with newly published systematic reviews using our **RSS feed**. From the [VetSRev website](#) just click on the Feeds button  in your web browser. The RSS feed shows the most recently added reviews. If you subscribe to the RSS feed via your Feeds button, you will be alerted automatically every time a review is added.

To learn more about VetSRev take a look at our introductory guides [About VetSRev](#) and [Getting started with VetSRev](#).

## Presentations by CEVM members

### Recent presentations:

CEVM members had posters accepted for the recent [Veterinary Education Symposium](#) in Cambridge (9-10<sup>th</sup> July 2015). **Mickey McDermott**'s poster titled: "Learning preferences for postgraduate continuing professional development in veterinary communication skills", discussed the results of a questionnaire investigating the respondents preferred formats for postgraduate CPD, the strengths of each method and the reasons for respondent's preferences. **Kathryn Wareham** presented a poster titled: "BestBETs for Vets: a tool for teaching evidence-based veterinary medicine", discussing the strengths of using BestBETs for Vets as an evidence based teaching tool for veterinary undergraduates.



Also at the Veterinary Education Symposium, a poster titled: 'Vets in the Community: a student-led clinic enhancing professional and clinical learning outcomes in the Nottingham curriculum' from Francesca Davidson and the CEVM's **Rachel Dean** and **Jenny Stavisky** explained how student participation in the clinic enhances student learning. Students gain experience of running a veterinary organisation and can practice practical and professional skills during the clinics consultations. You can find out more about Vets in the Community here:

<http://www.nottingham.ac.uk/cevm/population-research/shelter-medicine/vets-in-the-community.aspx> and follow them on Twitter: @vetsincommunity

### Upcoming presentations:

CEVM members have had several abstracts accepted for [BEVA Congress](#) (9<sup>th</sup>-12<sup>th</sup> September, Liverpool) :

#### **Adele Bowden:**

- 'Colic: Horse owner knowledge and experience'

#### **Laila Curtis:**

- 'Systematic review of evidence for plasma and peritoneal lactate as a diagnostic test for surgical colic'
- 'Appraisal of the current evidence for diagnostic tests that differentiate medical and surgical colic'

The CEVM will be well represented at [ISVEE](#) (3<sup>rd</sup>-7<sup>th</sup> November, Mexico) with a selection of poster and oral presentations, including:

- **Selene Huntley:** 'A survey of the use of veterinary information resources across the global veterinary profession' (poster)
- **Imogen Richens:** 'What do cattle farmers tell us about their attitudes towards biosecurity and vaccination that can help veterinarians improve their work?' (oral presentation)
- **Rachel Dean:** 'Investing in the right research: Adapting research prioritisation methods from medicine to veterinary medicine' (oral presentation)
- **Marnie Brennan:** 'Attitudes towards, and the use of, qualitative research methods in UK veterinary research' (poster)
- **Katie Waive:** 'Farm animal practitioners' thoughts on clinical audit' (poster)
- **Jenny Stavisky** has a poster presentation describing a study on kennel cough in shelter dogs, looking at the prevalence of *Streptococcus zooepidemicus* and the prevalence and antibacterial resistance patterns of other potentially pathogenic bacteria present.

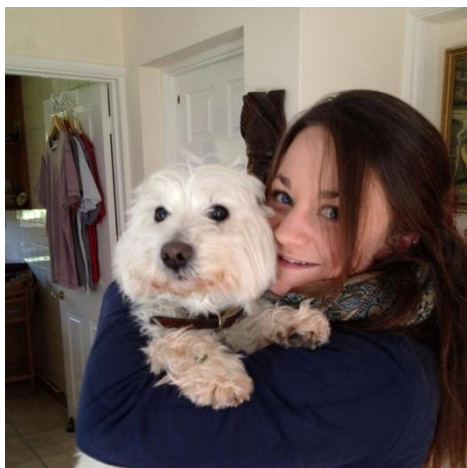
## Staff and student CEVM people updates:

- Congratulations to **Imogen Richens** who has successfully passed her PhD viva on: 'Implementation of vaccination strategies on UK dairy farms: Understanding challenges and perceptions'. Imogen is now working as a Research Associate with the CEVM, undertaking a questionnaire study investigating the attitudes of British dairy farmers towards biosecurity. The survey is part of a wider project funded by DairyCo, the CEVM and the University of Nottingham.
- Congratulations to **Chantelle Whelan** who won the 1<sup>st</sup> place media prize at the [Nottingham University Research Showcase June 2015](#). Chantelle received a trophy and a cash prize for her press release: ' "It's not you, it's me": Research explores unsuccessful guide dog partnerships'.
- Congratulations to **Christina Kuhl** who has handed in the final version of her PhD thesis: 'Pedigree dog welfare in the UK: a consumer driven market or something more complex?'
- **Hannah Doit** has finished her role as a Research Assistant and has started a PhD with the CEVM, looking at the methods and feasibility of conducting pragmatic clinical studies in small animal first opinion practice.
- This month we are sad to say goodbye to **Selene Huntley**, who has been working with the CEVM as a Research Fellow and is relocating to live in beautiful Scotland! We would like to thank Selene for all her hard work with the CEVM, due to be published in a series of papers coming soon! We will all miss her very much, and hope to get the opportunity to work with her again in the future.

## Spotlight on our research



This month we hear from Adelle Bowden, PhD student in the CEVM:



“I am a second year PhD student within the CEVM group. I graduated from Nottingham in 2013 and started my PhD in October 2013. I still do some first opinion equine practice alongside my PhD at one of the Clinical Associates of the University. My PhD is entitled “Maximising the impact of evidence based research on equine health and welfare”. One of the initial requirements has been to determine an area of equine health and welfare to focus on. Evidence based medicine is not widespread, particularly in equine veterinary practice. Identifying a topic to focus on has been keeping me busy thus far. I have been manually analysing practice data to catalogue out of hours calls and to determine which key diseases are seen most commonly

outside normal working hours. I have also been conducting questionnaires, aimed at horse owners. The purpose of this is to decipher what conditions are important and concerning to horse owners, and also to determine what their actions are given particular diseases. I have also questioned horse owners on what information and knowledge they feel they are lacking in. Once a specific disease has been identified, it can be targeted as a focus for development of an evidence based medicine strategy. In addition to data collection, I have also spent a lot of time researching different methods of implementing evidence based medicine using human medicine examples. I still have another two years (or so) left of my PhD and intend to create some guidelines that can be implemented into equine first opinion practice, the effect of which can then be measured.”

### Find out more about the CEVM

To find out more, take a look at the CEVM website (<http://www.nottingham.ac.uk/cevm/index.aspx>).

You can also join our mailing list to keep you informed of future developments (<http://www.nottingham.ac.uk/cevm/contact-us/mailling-list.aspx>).

If you would like to get involved with any of the CEVM’s projects or have any questions about our work, please e-mail us at [cevm@nottingham.ac.uk](mailto:cevm@nottingham.ac.uk).

Follow us on Twitter: @CEVetM (<https://twitter.com/CEVetM>)