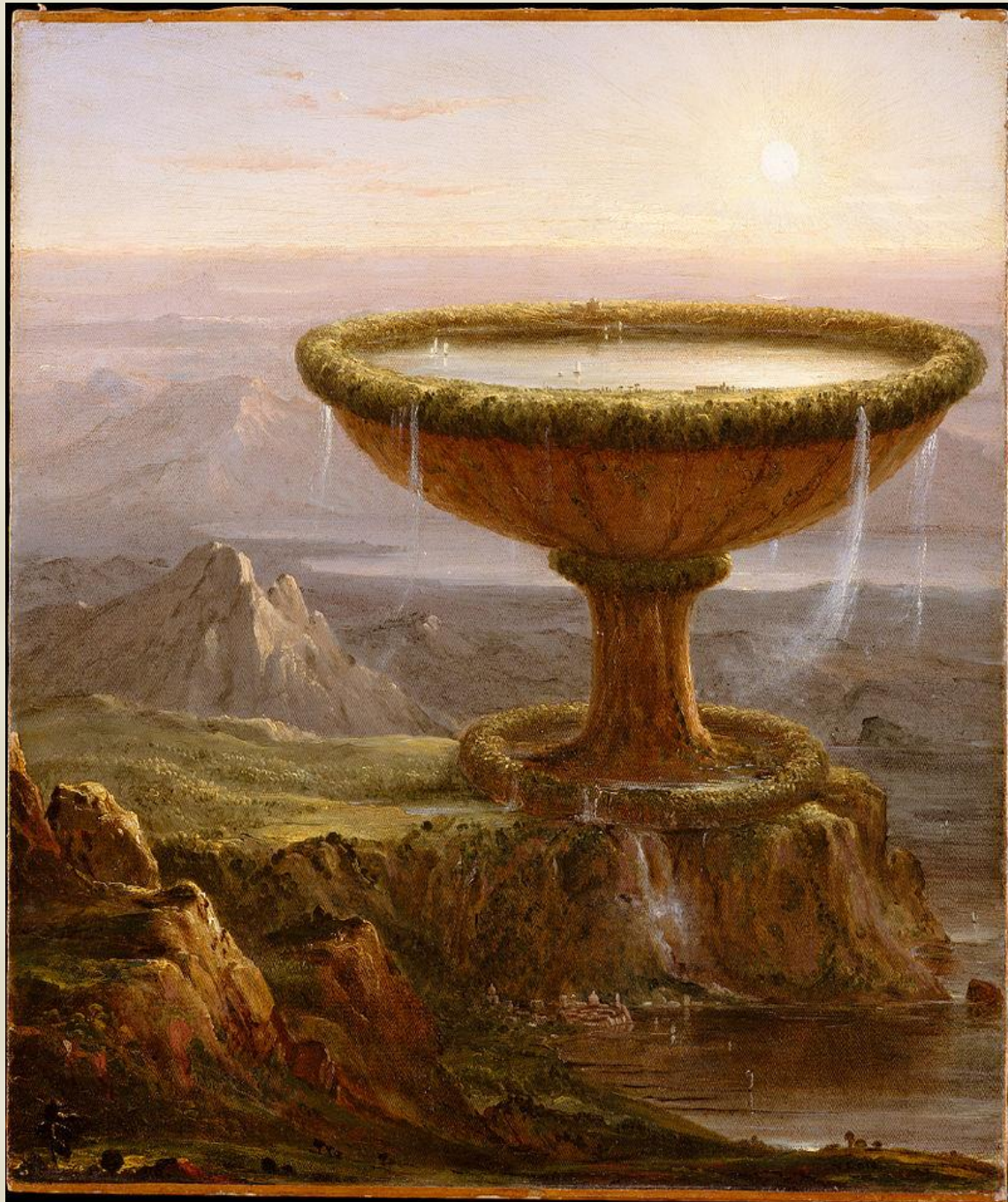


British Association of Nineteenth-Century Americanists:

4th Biennial Symposium

Scaling the Nineteenth Century



University of Nottingham / Nottingham Trent University

16th – 17th December 2019

DAY 1 – Monday 16th December 2019

Law and Social Sciences Building (South Entrance), University Park
Campus, University of Nottingham

11.00-11.30: Registration and Coffee

Law and Social Sciences Building (South Entrance) / Room A3

11.30-12.45: Keynote 1

Law and Social Sciences Building (South Entrance) / Room A1

“The Dissenting Atlantic: The Transatlantic Journey of *The Experience of Thomas Jones* (1850)” - Bridget Bennett (University of Leeds)

Chair: Katie McGettigan (Royal Holloway)

12.45-1.45: Lunch

Law and Social Sciences Building (South Entrance) / Room A3

1.45-3.15: Panels 1 and 2

Panel 1:

Law and Social Sciences Building (South Entrance) / Room A1

Cosmic Scales

“Astral Literacy and the Nineteenth-Century Culture of Cosmology” – Carrie Tirado Bramen (University at Buffalo)

“Emerson’s New Metaphysics” – Michael Jonik (University of Sussex)

“‘The Brain – is wider than the Sky’: Questions of Lyric Scale in Emily Dickinson’s ‘Brain’ Poems” - Adeline Chevrier-Bosseau (Université Clermont Auvergne)

Chair: Linda Freedman (University College London)

Panel 2:

Law and Social Sciences Building (South Entrance) / Room A2

Hemispheric Scales

“C. Wiley & Company’s Three ‘New Books’” – Duncan Faherty (Queens College & The Graduate Center, CUNY)

“A Voyage to India: Scaling-up Trade in the Early National Period” – Andrew Lawson (Leeds Beckett University)

“The Local Arctic: Scaling Authority in Jewett’s Country of the Pointed Firs” – L. Katherine Smith (Western Colorado University)

Chair: Matthew Pethers (University of Nottingham)

3.15-3.45 – Coffee

Law and Social Sciences Building (South Entrance) / Room A3

3.45-5.30 - Panels 3 and 4

Panel 3:

Law and Social Sciences Building (South Entrance) / Room A1

Democratic Scales

“‘Hosts of human bodies ... falling dead upon our hands’: *Sheppard Lee* and the Spectre of Population Growth in Early Nineteenth-Century America” – Philippa Chun (Cornell University)

“The Scales of Primitive Charisma” – Tom F. Wright (University of Sussex)

“Scales of Intelligence in Mark Twain’s *No. 44, The Mysterious Stranger*” – Michael Collins (King’s College London)

“Subjection, Slavery, and Culture in Henry Adams’s Novels” – Emily Coit (University of Bristol)

Chair: Stephanie Palmer (Nottingham Trent University)

Panel 4:

Law and Social Sciences Building (South Entrance) / Room A2

The Big Bang: Echoes of the Civil War

“Scaling the Civil War through Noise in Herman Melville’s Battle Pieces” – Katie McGettigan (Royal Holloway, University of London)

“In Lieu of ’65: Narrating Revolution in the Historical Novel of Reconstruction” – Tomos Hughes (University of Nottingham)

“‘The Man Without a Country’ and the Scales of Civil War History” – Jillian Caddell (University of Kent)

Chair: Hannah Murray (University of Liverpool)

5.30-6.30 – Reception

Law and Social Sciences Building (South Entrance) / Room A3

7.30 - Self-funded conference dinner, at Kayal, 8 Broad Street, NG1 3AL

DAY 2 – Tuesday 17th December 2019

Newton Building, City Centre Campus, Nottingham Trent University

8.30-9.00 – Coffee

Newton Building / Room 21AB

9.00-10.15 - Keynote 2

Newton Building / Room 28AB

“The Loss of Scale: The Cultural Logic of the Voxel” - Stephen Shapiro
(University of Warwick)

Chair: Benjamin Pickford (University of Lausanne)

10.15-10.45 – Coffee

Newton Building / Room 21AB

10.45-12.15 - Panels 5 and 6

Panel 5:

Newton Building / Room 21AB

Crossings: A Roundtable

“Democracy/State: James Fenimore Cooper on the Frontier, 1793/1823” - Cécile Roudeau (Université Paris Diderot)

“White/Not White: Robert Montgomery Bird’s Racial Transformations” – Hannah L. Murray (University of Liverpool)

“Antiquity/Modernity: An Issue of *Puck* Magazine, 1889” – Mark Storey (University of Warwick)

Chair and Respondent: Edward Sugden (King’s College London)

Panel 6:

Newton Building / Room 28AB

Feeling Scale

“Scale Variance and Magazine Media: Poe’s ‘The Domain of Arnheim’” - Paul Hurh (University of Arizona)

“‘I must calculate over again’: Scales of Pain in Melville” - Thomas Constantinesco (Université Paris Diderot/University of Oxford)

“Doll House Cinema: on Stacey Steers’ *Night Hunter*” - Martine Beugnet (Université Paris Diderot)

Chair: Georgia Walton (University of Leeds)

12.15-12.45 - Business Meeting

Newton Building / Room 28AB

12.45-1.30 – Lunch

Newton Building / Room 27AB

1.30-3.00 - Panels 7 and 8

Panel 7:

Newton Building / Room 21AB

Scales of Protest and Nineteenth-Century Literatures of Dissent

“Maria Stewart’s ‘Holy Indignation’: Social Reproduction in Early African American Women’s Writing” - Erin Forbes (University of Bristol)

“Radical Diets: Communal Kitchens and *The Blithedale Romance*” - J. Michelle Coghlan (University of Manchester)

“Reading Cultural Capital in Radical Periodicals” - John Funchion (University of Miami)

Chair: Michael Collins (King’s College London)

Panel 8:

Newton Building / Room 28AB

Technological Scales

“Electromechanical Romances: Human-Machine Relations and Experimental Identities in Late-Nineteenth Century Telegraphic Trade Literature” – Harriet Thompson (King’s College London)

“Jacob Riis’s Sentimental Negotiations” – Christa Holm Vogelius (University of Copenhagen)

“Playing Deliberately: *Walden* in Videogames” – George Cox (University of Nottingham)

Chair: Robin Vandome (University of Nottingham)

3-3.30 – Coffee

Newton Building / Room 21AB

3.30-5.00 - Panels 9 and 10

Panel 9:

Newton Building / Room 21AB

Measuring Race

“Scaling Races: On the Status of Comparing in Alexis de Tocqueville’s Travel Narratives” - Julian Gärtner (Bielefeld University)

“Contrasting Scales of Nature in Harriet Jacobs’s *Incidents in the Life of a Slave Girl*” – Anna Maguire Elliott (Independent Scholar)

“Dark Times” – Aaron Rosenberg (King’s College London)

Chair: Abigail Boucher (Aston University)

Panel 10:

Newton Building / Room 28AB

Scales of Genre

“Feminism and Fictional Scale: Market Considerations and Short Story Form in New Woman Writing” – Stephanie Palmer (Nottingham Trent University)

“What is an Instalment? Narrative Scales and the Nineteenth-Century Periodical” - Matthew Pethers (University of Nottingham)

“The Misfit Scales of Contingency: The Limits of Manifest Destiny in Interbellum California” – D. Berton Emerson (Whitworth University)

Chair: Mark Storey (University of Warwick)

5.00-6.00 - Pedagogy Panel

Newton Building / Room 28AB

“Measuring American Literature” – Graham Thompson (University of Nottingham)

Chair and Respondent: Bridget Bennett (University of Leeds)

Symposium organiser



With financial support from



Cover image: *The Titan's Goblet* (1833) by Thomas Cole