



Foreign Aid Inflows and the Real Exchange Rate in the CFA Franc Zone

by

Bazoumana Ouattara and Eric Strobl

The Centre for Research in Economic Development and International Trade is based in the School of Economics at the University of Nottingham. It aims to promote research in all aspects of economic development and international trade on both a long term and a short term basis. To this end, CREDIT organises seminar series on Development Economics, acts as a point for collaborative research with other UK and overseas institutions and publishes research papers on topics central to its interests. A list of CREDIT Research Papers is given on the final page of this publication.

Authors who wish to submit a paper for publication should send their manuscript to the Editor of the CREDIT Research Papers, Professor M F Bleaney, at:

Centre for Research in Economic Development and International Trade,
School of Economics,
University of Nottingham,
University Park,
Nottingham, NG7 2RD,
UNITED KINGDOM

Telephone (0115) 951 5620

Fax: (0115) 951 4159

CREDIT Research Papers are distributed free of charge to members of the Centre. Enquiries concerning copies of individual Research Papers or CREDIT membership should be addressed to the CREDIT Secretary at the above address. Papers may also be downloaded from the School of Economics web site at:

www.nottingham.ac.uk/economics/research/credit



Foreign Aid Inflows and the Real Exchange Rate in the CFA Franc Zone

by

Bazoumana Ouattara and Eric Strobl

The Authors

Bazoumana Ouattara, The School of Economic Studies, The University of Manchester and
Eric Strobl, CORE, Université Catholique de Louvain

Foreign Aid Inflows and the Real Exchange Rate in the CFA Franc Zone

by

Bazoumana Ouattara and Eric Strobl

Abstract

This paper presents an empirical analysis of the relationship between foreign aid inflows and the real exchange rate in 12 countries of the CFA Franc zone. Using dynamic panel analysis we find that foreign aid inflows do not generate Dutch disease effects in these countries. In terms of policy recommendation our results suggest that CFA countries can still receive aid without fear of harming their competitiveness.

Outline

1. Introduction
2. Foreign Aid and the Real Exchange Rate in the CFA Franc Zone: Some Facts
3. Empirical Model, Data and Summary Statistics
4. Empirics
5. Conclusion and Policy Implications

1. INTRODUCTION

Many studies have attempted to address the issue of whether foreign aid inflows exert a positive macroeconomic impact on the recipient country's economy. The vast majority of these have focused on the relationships between aid and growth, aid and savings, and aid and investment. A small part of the wider aid effectiveness studies, such as fiscal response studies, depart from this approach by examining how aid inflows affect the public sector (the primary recipient of aid) behaviour in developing countries. As far as the potential Dutch disease effects of foreign aid inflows are concerned, only a very limited number of studies have investigated this channel, notwithstanding the fact that an appreciation of the real exchange rate could harm the export competitiveness of aid recipient countries and thus harm their growth prospect.

The focal point of the theory on aid inflows and Dutch disease has been the impact exerted by aid on the relative price of non-tradable goods (*see Van Wijnbergen 1985 and 1986*), where the main argument is that some part of aid will be channelled to the non-tradable sector of the economy. As a result, the demand for non-tradable goods would rise, thereby raising their price. Given that the real exchange rate (*rer*) is defined as the relative price of non-tradable goods to that of tradable goods (i.e. $rer = \text{price tradable}/\text{price of non-tradable}$), a rise in the price of non-tradable means that the *rer* declines (appreciates). Indeed, in a panel study of 62 developing countries, Elbadawi (1999), in a panel study of 62 developing countries found that aid inflows caused the real exchange rate to appreciate, a results mirrored in the study of Sri Lanka by White and Wignaraja, (1992). In contrast, Ogun (1995) for Nigeria, Nyoni (1998) for Tanzania and Sackey (2001) for Ghana find no evidence of Dutch disease.

The present paper attempts to contribute to the wider aid effectiveness literature by exploring the issue of foreign aid and Dutch disease in the context of 12 African countries in the CFA Franc zone over the period of 1980-2000.¹ These countries present a good case for such

¹ The countries examined are Benin, Burkina Faso, Cameroon, Central African Republic, Chad, Congo (Republic of), Côte d'Ivoire, Gabon, Mali, Niger, Senegal and Togo. The CFA zone also includes Equatorial Guinea and Guinea Bissau, however, there was not sufficient data to include these in our empirical analysis.

study for three main reasons. Firstly, they have the same monetary and exchange rate arrangements.² Secondly, these countries have a strong economic link with France one of their main donors in aid. Finally, from an econometric view point-as shown by Llyod *et al.* (2001)-pooling countries with different underlying time series property leads, very often, to misleading results. In other words, the assumptions about the homogeneity of parameter estimates and the data generating process are more likely to hold, in the context of the CFA countries, than if we were to study a rather large sample which includes other African or developing countries.

The remainder of the paper is organised as follows. The next section presents some stylised facts on aid and the real exchange rate in the countries of the CFA zone. Section 3 discusses the model and the methodology employed. Section 4 presents and analyses the econometric results. Finally, section 5 concludes and provides some policy recommendations.

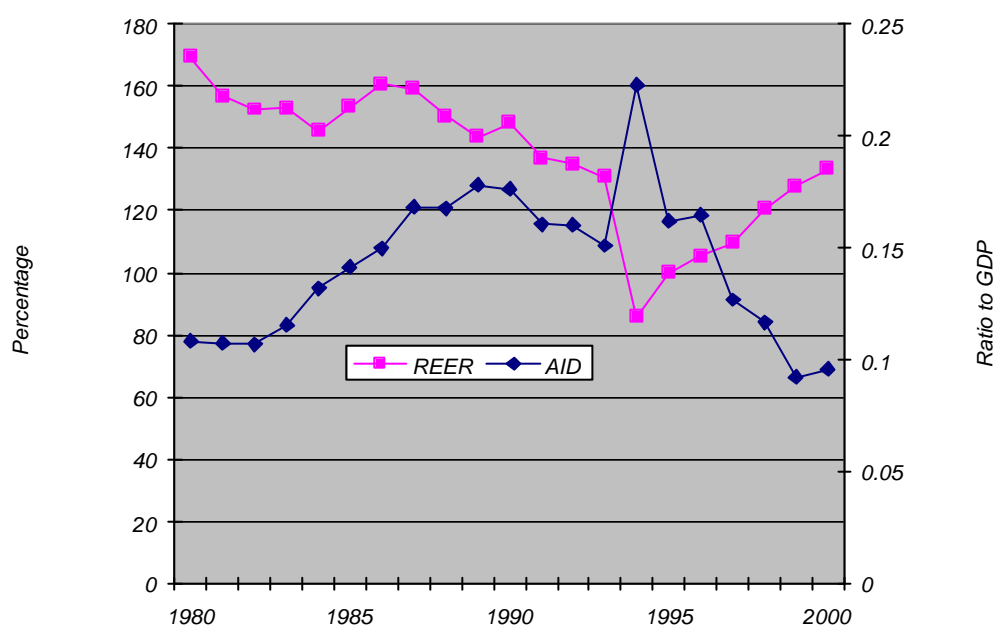
2. FOREIGN AID AND THE REAL EXCHANGE RATE IN THE CFA FRANC ZONE: SOME FACTS

Using data from the World Development Indicators database we calculated the real effective exchange rate (REER) for the CFA countries by multiplying the nominal exchange rate by the consumer price index of the US (used as a proxy for foreign price) deflated by the consumer price index of each country, with 1995 as the base year. This definition of the REER implies that an increase in the REER corresponds to a real depreciation. As Figure 1 indicates, the REER and Aid as a percentage of GDP have experienced different trends. Starting with foreign aid inflows, they witnessed a steady build up between 1980 and 1990. Starting from just 10% of GDP in 1980 they reached 14% of GDP in 1985 before jumping to almost 18% of GDP in 1989. During the same period the real effective exchange rate appreciated-going from almost 170 % in 1980 to 153% in 1985 and then 143% by 1989. Base on this evidence alone one might be tempted to argue that the appreciation the exchange rate was the result of the steady build up in aid inflows. However, between 1989 and 1993 the exchange rate

² Member countries do not have a monetary policy on their own and all countries must operate under the fixed exchange rate regime

continued to appreciate (reaching 131 % in 1993), and thus, despite the fact that foreign aid inflows have decreased to reach 15% of GDP. After 1994 the exchange rate started to depreciate sharply, going from 86% in 1994 to 133 % in 2000. This corresponds to the period when the CFA franc was devalued to enhance the competitiveness of the zone vis-à-vis non-CFA countries, such as Ghana and Nigeria, who were pursuing very aggressive competitiveness policies at the time. This period also witnessed a sharp decline in aid inflows as a share of GDP. From over 22% in 1994, aid inflows decreased to less than 10 % of GDP by 2000.

Figure 1: The REER and Aid Flows in The CFA zone (1980-2000)



3. EMPIRICAL MODEL, DATA AND SUMMARY STATISTICS

Following Edwards (1989) the behaviour of the real exchange rate can be represented by the following functional specification:

$$\log REER_t = a_0 + a_1 \log(AID)_t + a_2 \log(G)_t + a_3 \log(Ig)_t + a_4 \log(OPEN)_t + a_5 \log(TOT) + a_6 DCR + a_7 DEV + a_8 \log REER_{t-1}$$

(1)

where REER is the real effective exchange rate; AID is net official development assistance (ODA) as a ratio of GDP; G is government consumption as a ratio of GDP; Ig is public investment as a ratio of GDP; OPEN is openness of the economy defined as the sum of exports and imports expressed as a ratio of GDP; TOT is terms of trade; DCR is domestic credit as a ratio of GDP included as a proxy for monetary policy; and DEV is a dummy variable for the nominal devaluation of the CFA franc which takes the value of 0 between 1980-93 and 1 between 1994-2000.

The model in (1) includes a lagged dependent variable as a regressor, which implies that the usual approach of estimating a fixed effects model i.e. the least squares dummy variable estimator (LSDV) generates a biased estimates of the coefficients and thus not appropriate for estimating (1). To overcome this problem equation (1) can be rewritten by taking the first difference of the variables included in the model, as below:

$$\begin{aligned} \Delta \log REER_t = & \mathbf{g}_0 + \mathbf{g}_1 \Delta \log(AID)_t + \mathbf{g}_2 \Delta \log(G)_t \\ & + \mathbf{g}_3 \Delta \log(Ig)_t + \mathbf{g}_4 \Delta \log(OPEN)_t + \mathbf{g}_5 \Delta \log(TOT) \\ & + \mathbf{g}_6 \Delta \log(DCR)_t + \mathbf{g}_7 \Delta DEV + \mathbf{g}_8 \Delta \log REER_{t-1} \end{aligned} \quad (2)$$

Equation (2) can be regressed using the instrumental variables approach suggested by Arellano and Bond (1991) for dynamic panel models. The use of the Arellano and Bond (1991) GMM estimator with lagged level values of the dependent variable as instruments on (2) will produce unbiased and consistent estimates of our regressors.

The expected theoretical impacts of the respective variables included in model (2) are as follows:

- AID (-) Tends to cause real appreciation by changing the composition of the demand for traded and non-traded goods.
- G (?) The effect will depend on the composition of government

consumption. Consumption of non-tradable tends to appreciate the REER, while that of tradables leads to real depreciation.

- Ig (?) Same as G.
- OPEN (+) Openness of the economy should cause real appreciation.
- TOT (?) The impact depends on whether income or substitution effects dominate. If the income (substitution) effect dominates then deterioration of TOT leads to real depreciation (appreciation).
- DCR (-) Increases in domestic credit (proxy for expansionary macroeconomic policy) would generally lead to real appreciation.
- DEV (+) Dummy variable for the 1994 nominal devaluation is expected to lead to real depreciation.

Data used to estimate (2) are taken from a number of sources. Specifically, information on aid is obtained from the OECD/DAC online database, while data on government consumption, public investment, exports and imports (in OPEN) are extracted from the *World Development Indicators (WDI) 2002, CD-Rom version*. Data on terms of trade has been calculated by dividing export units value by import unit value (base year=1995), obtained from the IMF *CD-Rom 2002*. Summary statistics of all our variables are given in Table 1.

Table 1: Summary Statistics

Variable	Mean	Standard Deviation
Log (RER)	4.446	0.267
Log (OPEN)	-0.539	0.366
Log (Aid/GDP)	-2.474	0.819
Log G/GDP	-2.200	0.261
Log (I/GDP)	-1.836	0.497
Log (tot)	4.668	0.267
Changes in domestic credit	-0.002	0.321

4. EMPIRICS

Results of the estimation of model (2) are presented in Table 2. Before going to analyse the results it is important to check the validity of the tests results. Firstly, the Sargan test shows that we cannot reject the null hypothesis that the over-identifying restrictions are valid. Secondly, the AR(1) is significant while the AR(2) is insignificant, thus indicating that the null hypothesis of no first-order autocorrelation in the differenced residuals is rejected, but that there is no second order autocorrelation which would render the estimates biased. In addition to these tests, the results also show that the stability condition (measured by the coefficient of the lagged dependent variable) is correctly signed and statistically significant (i.e. $|-0.038| < 1$). This implies that our model is well specified and therefore the resulting estimates can be interpreted confidently.

Table 2: Dynamic Panel estimates of the Real Effective Exchange Rate

Variables	Estimates
Real Exchange Rate (-1)	-0.038* (0.020)
Openness	0.081*** (0.004)
Aid/GDP	0.100*** (0.007)
Government Consumption/GDP	-0.031*** (0.006)
Public Investment/GDP	-0.012 (0.008)
Terms of Trade	-0.009** (0.004)
Domestic Credit	-0.071*** (0.008)
Devaluation	0.147*** (0.007)
Constant	0.057 (0.008)
Observations	196
Number of cid	12
Wald Test ($\beta=0$)	1282***
AR(1) Test	1.715***
AR(2) Test	1.174
Sargan test p-value	1.000

Notes: (1) Standard errors in parentheses. (2) ***, **, and * indicate 1, 5, and 10 per cent significance levels.

Starting with the effect of aid inflows, the results indicate that they are positively associated with the REER with an estimated coefficient of 0.10, significant at the 1% level. This implies that foreign aid inflows in CFA countries tend to cause the depreciation of the real exchange rate, contrary to the Dutch disease theory of foreign aid. Similar findings were reported by Ogun (1995) for Nigeria, Nyoni (1998) for Tanzania and Sackey (2001) for Ghana. However, our finding is in clear contrast to the studies by Elbadawi (1999), in a panel study of 62 developing countries, and White and Wignaraja, (1992), in the context of Sri Lanka, who found that aid inflows caused the real exchange rate to appreciate. Turning to the other variables in the model, the results show that openness of the economy bears a positive and significant sign. This suggests reducing trade and exchange control in the CFA countries is an effective policy instrument for increasing their competitiveness. Government consumption has a negative significant impact on the REER, thus indicating increases in this variable will cause the real exchange rate to appreciate. As argued earlier, this scenario could occur if government consumption is dominated by non-tradable goods. To counteract this effect CFA governments must undertake some fiscal adjustment by curtailing their consumption of such goods. Public investment bears a negative sign, although the coefficient is not statistically significant. Terms of trade has a negative significant effect on the REER. Expansionary macroeconomic policies, captured by increases in domestic credit, have a negative significant impact on the real exchange rate. Finally, the results related to the variable Devaluation indicate the nominal devaluation of CFA franc in 1994 has significantly led to the depreciation of the real exchange rate.

5. CONCLUSION AND POLICY IMPLICATIONS

This paper assessed the impact of foreign aid inflows on the real effective exchange rate of the CFA franc countries between 1980-2000 in order to test the hypothesis that foreign aid inflows cause real appreciation in the recipient country. Using the dynamic panel analysis proposed by Arellano and Bond (1991), we found that this hypothesis is rejected in the case of the CFA countries. Put differently, this finding refutes the belief foreign that aid inflows

cause Dutch disease in the recipient country. On the contrary, foreign aid inflows are associated with a real depreciation of the franc.

The results also show that openness of the economy and the nominal devaluation of the CFA franc in 1994 have also contributed to the depreciation of real exchange rate over that period. By contrast, our results indicate that terms of trade, government consumption and expansionary macroeconomic policies led to real appreciation of the franc. The impact of public investment was also negative, but insignificant at the conventional levels.

There are several policy implications coming out of this study. Firstly, contrary to the policy recommendation of Elbadawi (1999)³, we argue that CFA countries can still continue to receive aid without harming their export competitiveness. Rather, aid inflows to the CFA countries enhance their competitiveness in the light of the evidence presented here. Secondly, the results related to the openness of the economy suggest that CFA governments should work towards more liberalisation. Thirdly, the fact that government consumption appreciates the real exchange rate implies that the public sector has to introduce some fiscal discipline by curtailing its consumption or by changing its composition in favour of traded goods. Finally, there appears to be a need for the two Central Banks of the CFA zone (*Banque des Etats de l'Afrique de l'Ouest*, for West Africa and *Banque des Etats de l'Afrique Centrale*, for Central Africa) to play a crucial role by avoiding increases in the domestic credit as this could harm the member countries' competitiveness.

³ The author argues that the dependence of African countries on aid could damage their export competitiveness and thus export-oriented development strategy because of the "Dutch" disease effects generated by aid inflows.

REFERENCES

- Edwards, S. (1989), *Real Exchange Rates, Devaluation and Adjustment: Exchange Rate Policy in Developing Countries*. Cambridge MA, MIT Press.
- Elbadawi, I.A. (1999), “*External Aid: Help or Hindrance to Export Orientation in Africa*”, *Journal of African Economics* 8 (4): 578-616
- IMF (2002). *International Financial Statistics CD-ROM*, Washington DC, IMF
- Lloyd, T.O. Morrissey and R. Osei (2001), “*Problems with Pooling in Panel Data Analysis for Developing Countries: The Case of Aid and Trade Relationships*”, University of Nottingham CREDIT Research Paper 01/14
- Nyoni, T.S. (1998), “*Foreign Aid and Economic Performance in Tanzania*”. *World Development* 26 (7): 1235 – 40
- OECD (2003), *DAC Online Statistics*, Paris, OECD
- Ogun, O (1995), “*Real Exchange Rate Movements and Export Growth: Nigeria, 1960 – 1999*”, African Economic Research Consortium Research Paper
- Sackey, H. A. (2001), “*External Aid Inflows and the Real Exchange Rate in Ghana*”, AERC Research Paper 110
- White, H. and G. Wignaraja (1992), “*Exchange Rates, Trade Liberalisation and Aid: The Sri Lankan Experience*”. *World Development* 20 (10): 1471 – 80.
- World Bank (2002), *World Development Indicators CD-ROM*, World Bank

CREDIT PAPERS

- 02/01 **Eric Strobl and Robert Thornton**, “Do Large Employers Pay More in Developing Countries? The Case of Five African Countries”
- 02/02 **Mark McGillivray and J. Ram Pillarisetti**, “International Inequality in Human Development, Real Income and Gender-related Development”
- 02/03 **Sourafel Girma and Abbi M. Kedir**, “When Does Food Stop Being a Luxury? Evidence from Quadratic Engel Curves with Measurement Error”
- 02/04 **Indraneel Dasgupta and Ravi Kanbur**, “Class, Community, Inequality”
- 02/05 **Karuna Gomanee, Sourafel Girma and Oliver Morrissey**, “Aid and Growth in Sub-Saharan Africa: Accounting for Transmission Mechanisms”
- 02/06 **Michael Bleaney and Marco Gunderman**, “Stabilisations, Crises and the “Exit” Problem – A Theoretical Model”
- 02/07 **Eric Strobl and Frank Walsh**, “Getting It Right: Employment Subsidy or Minimum Wage? Evidence from Trinidad and Tobago”
- 02/08 **Carl-Johan Dalgaard, Henrik Hansen and Finn Tarp**, “On the Empirics of Foreign Aid and Growth”
- 02/09 **Teresa Alguacil, Ana Cuadros and Vincente Orts**, “Does Saving Really Matter for Growth? Mexico (1970-2000)”
- 02/10 **Simon Feeny and Mark McGillivray**, “Modelling Inter-temporal Aid Allocation”
- 02/11 **Mark McGillivray**, “Aid, Economic Reform and Public Sector Fiscal Behaviour in Developing Countries”
- 02/12 **Indraneel Dasgupta and Ravi Kanbur**, “How Workers Get Poor *Because* Capitalists Get Rich: A General Equilibrium Model of Labor Supply, Community, and the Class Distribution of Income”
- 02/13 **Lucian Cernat, Sam Laird and Alessandro Turrini**, “How Important are Market Access Issues for Developing Countries in the Doha Agenda?”
- 02/14 **Ravi Kanbur**, “Education, Empowerment and Gender Inequalities”
- 02/15 **Eric Strobl**, “Is Education Used as a Signaling Device for Productivity in Developing Countries?”
- 02/16 **Suleiman Abrar, Oliver Morrissey and Tony Rayner**, “Supply Response of Peasant Farmers in Ethiopia”
- 02/17 **Stephen Knowles**, “Does Social Capital Affect Foreign Aid Allocations?”
- 02/18 **Dirk Willem te Velde and Oliver Morrissey**, “Spatial Inequality for Manufacturing Wages in Five African Countries”
- 02/19 **Jennifer Mbabazi, Oliver Morrissey and Chris Milner**, “The Fragility of the Evidence on Inequality, Trade Liberalisation, Growth and Poverty”
- 02/20 **Robert Osei, Oliver Morrissey and Robert Lensink**, “The Volatility of Capital Inflows: Measures and Trends for Developing Countries”
- 02/21 **Miyuki Shibata and Oliver Morrissey**, “Private Capital Inflows and Macroeconomic Stability in Sub-Saharan African Countries”
- 02/22 **L. Alan Winters, Neil McCulloch and Andrew McKay**, “Trade Liberalisation and Poverty: The Empirical Evidence”
- 02/23 **Oliver Morrissey**, “British Aid Policy Since 1997: Is DFID the Standard Bearer for Donors?”

- 02/24 **Öner Günçavdi, Suat Küçükçifçi and Andrew McKay**, “Adjustment, Stabilisation and the Analysis of the Employment Structure in Turkey: An Input-Output Approach”
- 02/25 **Christophe Muller**, “Censored Quantile Regressions of Chronic and Transient Seasonal Poverty in Rwanda”
- 02/26 **Henrik Hansen**, “The Impact of Aid and External Debt on Growth and Investment”
- 02/27 **Andrew McKay and David Lawson**, “Chronic Poverty in Developing and Transition Countries: Concepts and Evidence”
- 02/28 **Michael Bleaney and Akira Nishiyama**, “Economic Growth and Income Inequality”
- 03/01 **Stephen Dobson, Carlyn Ramlogan and Eric Strobl**, “Why Do Rates of Convergence Differ? A Meta-Regression Analysis”
- 03/02 **Robert Lensink and Habeab T. Mehrteab**, “Risk Behaviour and Group Formation in Microcredit Groups in Eritrea”
- 03/03 **Karuna Gomanee, Oliver Morrissey, Paul Mosley and Arjan Verschoor**, “Aid, Pro-Poor Government Spending and Welfare”
- 03/04 **Chris Milner and Evious Zgou**, “Export Response to Trade Liberalisation in the Presence of High Trade Costs: Evidence for a Landlocked African
- 03/05 **Mark McGillivray and Bazoumana Ouattara**, “Aid, Debt Burden and Government Fiscal Behaviour in Côte d’Ivoire”
- 03/06 **José Antonio Alonso and Carlos Garcimartin**, “Poverty Reduction and Aid Policy”
- 03/07 **Salvador Barrios, Luisito Bertinelli and Eric Strobl**, “Dry Times in Africa”
- 03/08 **Sam Laird, Santiago Fernandez de Cordoba and David Vanzetti**, “Market Access Proposals for Non-Agricultural Products”
- 03/09 **Indraneel Dasgupta and Ravi Kanbur**, “Bridging Communal Divides: Separation, Patronage, Integration”
- 03/10 **Robert Osei, Oliver Morrissey and Tim Lloyd**, “Modelling the Fiscal Effects of Aid: An Impulse Response Analysis for Ghana”
- 03/11 **Lucian Cernat and Sam Laird**, “North, South, East, West: What’s best? Modern RTAs and their Implications for the Stability of Trade Policy”
- 03/12 **Indraneel Dasgupta and Diganta Mukherjee**, “‘Arranged’ Marriage, Dowry and Female Literacy in a Transitional Society”
- 03/13 **Karuna Gomanee, Sourafel Girma and Oliver Morrissey**, “Aid, Public Spending and Human Welfare: Evidence from Quantile Regressions”
- 03/14 **Luisito Bertinelli and Eric Strobl**, “Urbanization, Urban Concentration and Economic Growth in Developing Countries”
- 03/15 **Karuna Gomanee, Sourafel Girma and Oliver Morrissey**, “Searching for Aid Threshold Effects”
- 03/16 **Farhad Noobakhsh**, “Spatial Inequality and Polarisation in India”
- 03/17 **Evious K. Zgou**, “The Implications of Trade Policy and ‘Natural’ Barriers Induced Protection for Aggregate Demand for Imports: Evidence for Malawi”
- 03/18 **Normal Gemmill and Oliver Morrissey**, “Tax Structure and the Incidence on the Poor in Developing Countries”

- 03/19 **Alan Harding**, “Did the Tanzanian Manufacturing Sector Rebound in the 1990s? Alternative Sources of Evidence”
- 03/20 **Paul Mosley, Farhad Noorbakhsh and Alberto Paloni**, “Compliance with World Bank Conditionality: Implications for the Selectivity Approach to Policy-Based Lending and the Design of Conditionality”
- 03/21 **Evious K. Zgovu**, “Price Transmission, Domestic Relative Incentives and Inter-sector Resource Flow Analysis”
- 04/01 **Chris Milner and Verena Tandrayen**, “The Impact of Exporting and Export Destination on Manufacturing Wages: Evidence for Sub-Saharan Africa”
- 04/02 **Sam Laird, Ralf Peters and David Vanzetti**, “Southern Discomfort: Agricultural Policies, Trade and Poverty”
- 04/03 **Santiago Fernandez de Córdoba, Sam Laird and David Vanzetti**, “Trick or Treat? Development Opportunities and Challenges in the WTO Negotiations on Industrial Tariffs
- 04/04 **Santiago Fernandez de Córdoba, Sam Laird and David Vanzetti**, “Blend it like Beckham – Trying to read the Ball in the WTO Negotiations on Industrial Tariffs
- 04/05 **Bazoumana Outtara**, “Modelling the Long Run Determinants of Private Investment in Senegal”
- 04/06 **Indraneel Dasgupta and Sugata Marjit**, “Evasive Reform: Informalisation in a Liberalised Economy with Wage-setting Unions”
- 04/07 **Bazoumana Ouattara and Eric Strobl**, “Foreign Aid Inflows and the Real Exchange Rate in the CFA Franc Zone”

SCHOOL OF ECONOMICS DISCUSSION PAPERS

In addition to the CREDIT series of research papers the School of Economics produces a discussion paper series dealing with more general aspects of economics. Below is a list of recent titles published in this series.

- 02/01 **Mark A. Roberts**, “Central Wage Setting Under Multiple Technological Equilibria: A Mechanism for Equilibrium Elimination”
- 02/02 **Mark A. Roberts**, “Employment Under Wage-Only and Wage-Employment Bargaining: The Role of the Government Budget Constraint”
- 02/03 **Mark A. Roberts**, “Can the Capital Gains Arising from an Unfunded Pensions Reform Make it Pareto-Improving?”
- 02/04 **Mehrdad Sepahvand**, “Privatisation in a Regulated Market, Open to Foreign Competition”
- 02/05 **Mark A. Roberts**, “Can Pay-As-You Go Pensions Raise the Capital Stock?”
- 02/06 **Indraneel Dasgupta**, “Consistent Firm Choice and the Theory of Supply”
- 02/07 **Michael Bleaney**, “The Aftermath of a Currency Collapse: How Different Are Emerging Markets?”
- 02/08 **Richard Cornes and Roger Hartley**, “Dissipation in Rent-Seeking Contests with Entry Costs”
- 02/09 **Eric O’N. Fisher and Mark A. Roberts**, “Funded Pensions, Labor Market Participation, and Economic Growth”
- 02/10 **Spiros Bougheas**, “Imperfect Capital Markets, Income Distribution and the ‘Credit Channel’: A General Equilibrium Approach”
- 02/11 **Simona Mateut, Spiros Bougheas and Paul Mizen**, “Trade Credit, Bank Lending and Monetary Policy Transmission”
- 02/12 **Bouwe R. Dijkstra**, “Time Consistency and Investment Incentives in Environmental Policy”
- 02/13 **Bouwe R. Dijkstra**, “Samaritan vs Rotten Kid: Another Look”
- 02/14 **Michael Bleaney and Mark A. Roberts**, “International Labour Mobility and Unemployment”
- 02/15 **Cihan Yalcin, Spiros Bougheas and Paul Mizen**, “Corporate Credit and Monetary Policy: The Impact of Firm-Specific Characteristics on Financial Structure”
- 02/16 **Christophe Muller**, “The Geometry of the Comparative Statics”
- 03/01 **Arijit Mukherjee**, “Licensing in a Vertically Separated Industry”
- 03/02 **Arijit Mukherjee and Enrico Pennings**, “Imitation, Patent Protection and Welfare”
- 03/03 **Arijit Mukherjee**, “Bernard vs. Cournot Competition in Asymmetric Duopoly: The Role of Licensing”
- 03/04 **Richard Cornes and Roger Hartley**, “Aggregative Public Good Games”
- 03/05 **Arijit Mukherjee and Soma Mukherjee**, “Welfare Effects of Entry: The Impact of Licensing”
- 03/06 **Arijit Mukherjee**, “Bertrand and Cournot Competitions in a Dynamic Game”
- 03/07 **Tai-Hwan Kim, Young-Sook Lee and Paul Newbold**, “Spurious Regressions with Processes Around Linear Trends or Drifts”

- 03/08 **Emi Mise, Tae-Hwan Kim and Paul Newbold**, “The Hodrick-Prescott Filter at Time Series Endpoints”
- 03/09 **Stephen Leybourne, Tae-Hwan Kim and Paul Newbold**, “Examination of Some More Powerful Modifications of the Dickey-Fuller Test”
- 03/10 **Young-Sook Lee**, “Intraday Predictability of Overnight Interest Rates”
- 03/11 **Mark A Roberts**, “Bismarckian and Beveridgean Pay-As-You-Go Pension Schemes Where the Financial Sector is Imperfectly Competitive”
- 03/12 **Richard C. Cornes and Mehrdad Sepahvand**, “Cournot Vs Stackelberg Equilibria with a Public Enterprise and International Competition”
- 03/13 **Arijit Mukherjee and Soma Mukherjee**, “Where to Encourage Entry: Upstream or Downstream”
- 03/14 **Tae-Hwan Kim and Christophe Muller**, “Two-Stage Quantile Regression When the First Stage is Based on Quantile Regression”
- 03/15 **Michael Bleaney and Manuela Francisco**, “Exchange Rate Regimes and Inflation – Only Hard Pegs Make a Difference”
- 03/16 **Michael Bleaney and R. Todd Smith**, “Prior Performance and Closed-End Fund Discounts”
- 03/17 **Richard Cornes and Roger Hartley**, “Loss Aversion and the Tullock Paradox”
- 03/18 **Tim Lloyd, Steve McCorrison, Wyn Morgan and Tony Rayner**, “Food Scares, Market Power and Relative Price Adjustment in the UK”
- 03/19 **Piercarlo Zanchettin**, “Differentiated Duopoly With Asymmetric Costs: New Results from a Seminal Model”
- 03/20 **Bouwe R. Dijkstra and Daan P. van Soest**, “Environmental Uncertainty and Irreversible Investments in Abatement Technology”
- 03/21 **Richard Cornes and Jun-ichi Itaya**, “Models with Two or More Public Goods”
- 03/22 **Arijit Mukherjee and Soma Mukherjee**, “Licensing and Welfare Reducing Competition”
- 03/23 **Parantap Basu and Alessandra Guariglia**, “Foreign Direct Investment, Inequality, and Growth”
- 03/24 **Robert E. Carpenter and Alessandra Guariglia**, “Cash Flow, Investment, and Investment Opportunities: New Tests using UK Panel Data”
- 04/01 **Indraneel Dasgupta and Prasanta K. Pattanaik**, “ ‘Regular’ Choice and the Weak Axiom of Stochastic Revealed Preference”
- 04/02 **Lars Christian Moller**, “Sharing Transboundary Rivers Fairly and Efficiently”
- 04/03 **Alex Possajennikov**, “Evolutionary Stability of Constant Consistent Conjectures”
- 04/04 **Michael Bleaney, Spiros Bougheas and Ilias Skamnelos**, “Interactions Between Banking Crises and Currency Crises: A Theoretical Model”
- 04/05 **Arijit Mukherjee**, “Price and Quantity Competition Under Free Entry”
- 04/06 **Arijit Mukherjee and Soma Mukherjee**, “Domestic vs. Foreign Competition with Licensing”
- 04/07 **M Emanrul Hague and Arijit Mukherjee**, “On the Revenue Implications of Trade Liberalisation under Imperfect Competition”

- 04/08 **Erwin Amman and Alex Possajennikov**, “Evolution in Symmetric Incomplete Information Games”
- 04/09 **Tim Lloyd, Steve McCorriston, Wyn Morgan and Tony Rayner**, “Price Transmission in Imperfectly Competitive Vertical Markets”
- 04/10 **Tim Lloyd, Steve McCorriston, Wyn Morgan and Tony Rayner**, “Food Scares, Market Power and Relative Price Adjustment in the UK
- 04/11 **Arijit Mukherjee, Udo Broll and Soma Mukherjee**, “Entry in a Vertically Separated Industry Price VS. Quantity Competition”
- 04/12 **Mark Roberts**, “Pareto-Improving Pension Reform through Technological Innovation”
- 04/13 **Young-Sook Lee, Tae-Hwan Kim and Paul Newbold**, “Revisiting the Martingale Hypothesis for Exchange Rates”

Members of the Centre

Director

Oliver Morrissey - aid policy, trade and agriculture

Research Fellows (Internal)

Simon Appleton – poverty, education, household economics

Adam Blake – CGE models of low-income countries

Mike Bleaney - growth, international macroeconomics

Indraneel Dasgupta – development theory, household bargaining

Norman Gemmell – growth and public sector issues

Ken Ingersent - agricultural trade

Tim Lloyd – agricultural commodity markets

Chris Milner - trade and development

Wyn Morgan - futures markets, commodity markets

Tony Rayner - agricultural policy and trade

Research Fellows (External)

Manuela Francisco (*University of Minho*) – inflation and exchange rate regimes

David Fielding (*University of Leicester*) – investment, monetary and fiscal policy

Ravi Kanbur (*Cornell*) – inequality, public goods – Visiting Research Fellow

Henrik Hansen (*University of Copenhagen*) – aid and growth

Stephen Knowles (*University of Otago*) – inequality and growth

Sam Laird (*UNCTAD*) – trade policy, WTO

Robert Lensink (*University of Groningen*) – aid, investment, macroeconomics

Scott McDonald (*University of Sheffield*) – CGE modelling, agriculture

Mark McGillivray (*WIDER, Helsinki*) – aid allocation, aid policy

Andrew McKay (*University of Bath*) – household poverty, trade and poverty

Doug Nelson (*Tulane University*) - political economy of trade

Farhad Noorbakhsh (*University of Glasgow*) – inequality and human development

Robert Osei (*Institute of Economic Affairs, Ghana*) – macroeconomic effects of aid

Alberto Paloni (*University of Glasgow*) – conditionality, IMF and World Bank

Eric Strobl (*University of Louvain*) – labour markets

Finn Tarp (*University of Copenhagen*) – aid, CGE modelling