



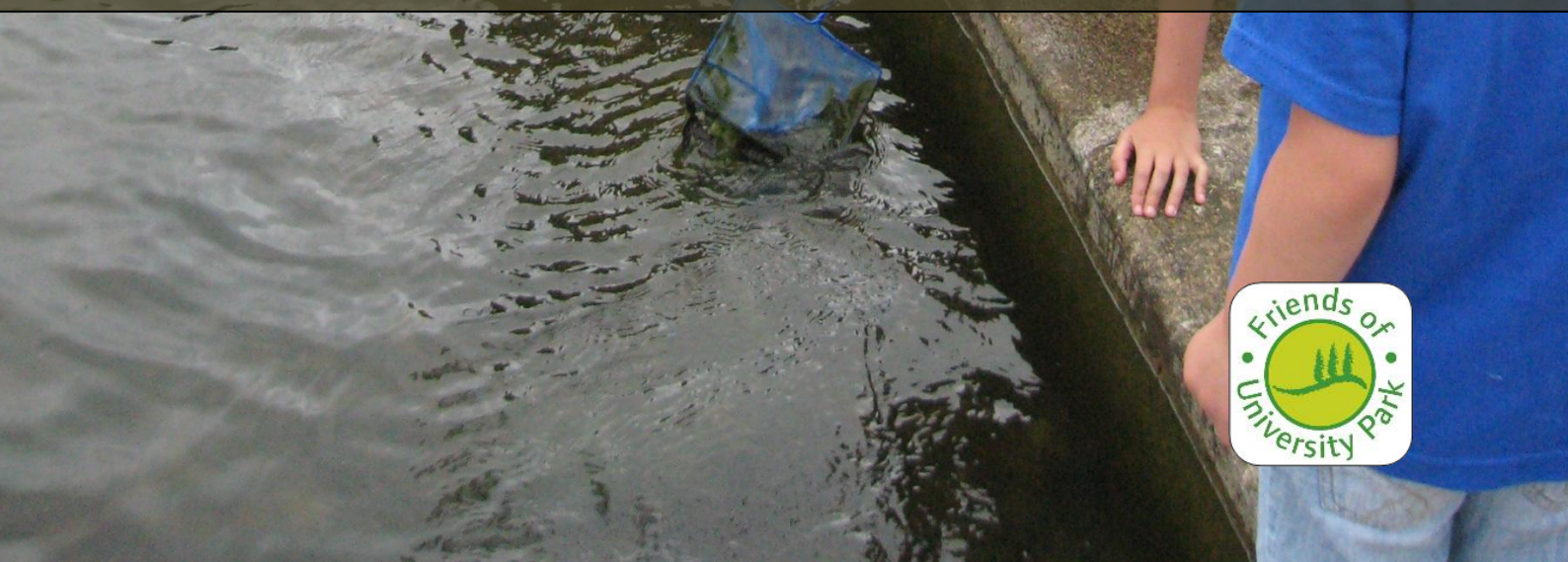
The University of  
**Nottingham**

UNITED KINGDOM • CHINA • MALAYSIA



# Estate Office Landscape Report 2010/11

[www.nottingham.ac.uk/sustainability](http://www.nottingham.ac.uk/sustainability)





# **Landscape Report 2010 - 2011**

## **Introduction**

2010—2011 has proved an extremely challenging time for the Estate Office - Grounds Section.

The extreme winter weather whilst challenging from the perspective of maintaining safe thoroughfares throughout all the campuses also caused significant disruption to normal landscape maintenance and renewal programmes as well as sporting fixtures.

With the ground almost continuously frozen for nearly two months, virtually all external sport from the end of November through to the middle of January was cancelled.

The dramatic temperature drops resulted in severe damage to the landscape plantings throughout all the campuses with plant losses estimated well in excess of £10,000. Many species which were previously believed to be hardy succumbed to the extreme low temperatures, in particular Eucalyptus trees, Phormiums, Cordylines and Hebes were all severely affected.

Despite the government imposed restrictions on supplies of rock salt the Estate Office was able to maintain a sufficient supply to keep the campuses safe for vehicles and pedestrians.

Following on from the extreme cold we have subsequently suffered the driest year on record. With so many new buildings being completed and requiring landscaping, the most challenging aspect has not been planning them but in keeping them irrigated and alive through this period.

The dry weather also impacted on the grounds levelling works at Highfields Sports Ground. Areas surrounding the 1st Team Football had become increasingly uneven over the past 10 years due to the settling of the gravel beds below. The decision was taken to level the pitches in May in the anticipation that normal rainfall levels would ensue however the lack of rainfall has delayed full recovery of the sports pitches.

## Major projects undertaken and completed

### Cycle Routes



The University Park cycle routes were completed in April this year and the landscape renovation and new planting work followed immediately with levelling and reseeded of all the disturbed areas. The scheme has been successfully integrated into the landscape with minimal loss of existing trees. Where trees and landscape features were impacted then mitigation planting and re-landscaping has taken place.

### The Lenton House Easement

The Ha-ha project on land acquired from the Lenton House has enabled the creation of a more attractive route through to the centre of University Park from the Western end of Beeston Lane. The fencing has been removed adjacent to the Cut Through Lane and Beeston Lane creating a visually more appealing appearance from both aspects and at the same time providing another opportunity to develop the landscape.



### East Midlands Conference Centre



East Midlands Conference Centre has undergone a significant landscape renewal with new plantings to both the Main Entrance area and the roadside adjacent to Beeston Lane. The creation of two new stair cases to the South Lawn have improved accessibility and use of this valuable outdoor resource. New LED uplighters have been installed illuminating the mature trees to the Beeston Lane



boundary.

## Jubilee Drive Link Road

With the introduction of the new 'one way' road system through the centre of University Park, a new link road was installed connecting Jubilee Drive and Cut Through Lane. The proximity of this development to both Trent Building and Highfield House could have potentially impacted on the general aesthetics of the area however careful landscaping has effectively integrated the new road into the landscape.



## New Build Landscaping



The new building programmes undertaken at all the campuses have provided opportunities for new landscaping schemes. In particular the Maths development from the original IESSG building created scope for a completely new landscape with new shrub and herbaceous plantings coupled with new tree planting.

The Engineering and Science Learning Centre provided a completely different direction for landscape development. Through the BREEAM accreditation scheme we have adopted a bio-diverse scheme to increase the number of wild flowers on the campus. This has also led to an opportunity to develop new green corridors throughout University Park linking various fragmented woodland and meadow grass areas together.

Additional new build landscaping has been undertaken at Sutton Bonington with the completion of both the Bio-Energy and Bio-Science Buildings. The Bio-

Energy Building landscape has been planted with native species with the intention of recreating the original bio-diverse habitat.

## Grove Farm and the Trent Valley Way



The University has been working in partnership with Nottingham City Council to complete the riverside Big Track path which forms part of the Trent Valley Way. This was completed in July this year. The path enables cyclists and pedestrians to enjoy a safe route away from vehicular traffic along Lenton Lane. The path has also improved access for the local anglers whose fishing rights have been retained.

In preparation for the Wind Farm development the Grounds Section has started a redevelopment and realignment of the pitches at Grove Farm. Part of this process involved the creation of a new cricket square which was completed during August this year and will be available for its first games in summer 2012

## Highfields Sports Grounds



2011 has been a busy year at Highfields Sports Grounds. The decision was taken to undertake a full re-levelling of the cricket outfield and several associated winter sports pitches. In conjunction with the levelling a new First Team Football pitch has been installed complete with new dugouts. This should be available for play in

the 2012 season.



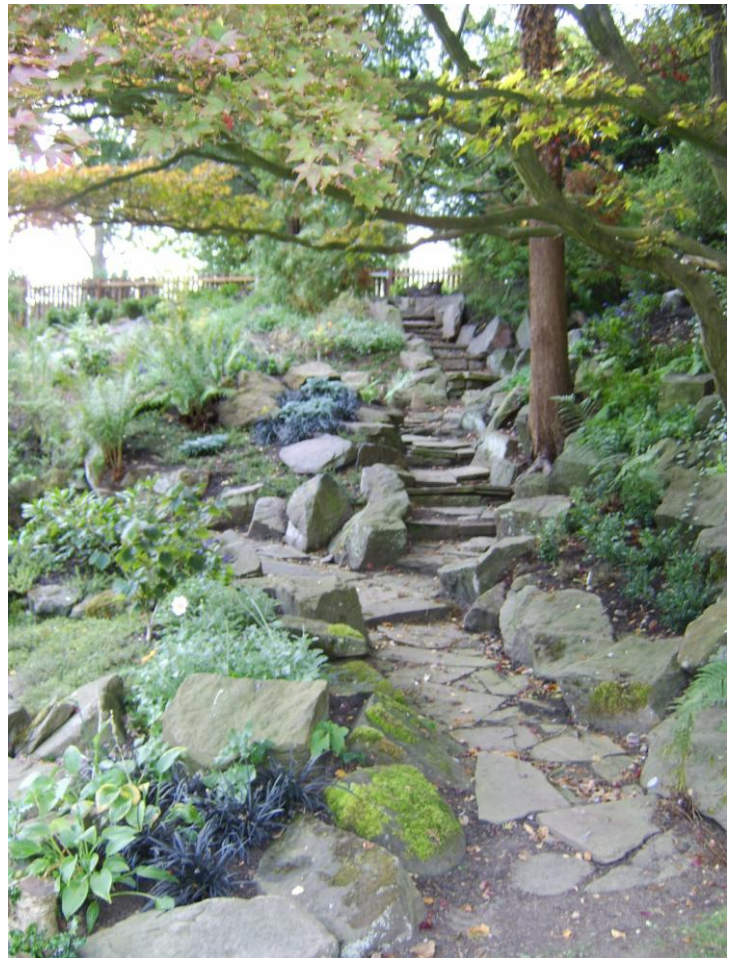
## Community Projects



Hugh Stewart Hall

This year has seen the renovation of the Hugh Stewart Rock Garden. For the first time since the founding of the Friends of University Park Group we have been able to involve student volunteers in the scheme.

The clearance work revealed a network of paths which had become completely overgrown. Now replanted the area has once again become a feature garden of





## Friends of University Park

As with previous years the Grounds Section and the Friends of University Park has had another busy and successful year. Events commenced in February with the Winter tree walk and from then on the calendar got into full swing with over 20 visits and events generally, 16 of these were publicised events open to the public, whilst the remaining events have been guided tours for various groups.

The weather was kind for Picnic in the Park which was again extremely well attended and the National Gardens Scheme Open Day was yet again a huge success raising £980.00 for the NGS Association. Leading on from the NGS success, the event next year will be held at the Sutton Bonington Arboretum.

## Biodiversity Audits and Management Action Plans

With the completion of the Biodiversity Audit and Management Plan the University Park Campus has been identified as an especially important site within the Nottinghamshire and East Midlands areas for the diversity of Bat species known to be both resident and frequent visitors. One species in particular, *Nathusius' pipistrelle* *Pipistrellus nathusii* (above right) is nationally rare with the University having only the third confirmed



recording in Nottinghamshire. Through the Biodiversity Action Plan scope has been identified for further increasing the diversity of species on University Park. The changes necessary to achieve this requires relatively minor changes in current landscape management techniques. Increases in the meadow grassland corridors around the campus will link fragmented grassland habitats and lead to easier migration of both flora and fauna species around the site. This requires reduced mowing frequencies and has the added bonus of reducing the University's Carbon Footprint.

## Partnership and Community working 2011

- Annual programme of events for the Community to enjoy organised by the Friends of University Park (FoUP) Picnic in the Park FoUP annual free event for the community.
- Organised tours of University Park and the Jubilee Campus FoUP
- FoUP Volunteers organising events and supporting projects within University Park.
- Summerwood Day Centre Clifton, Grounds Section working in partnership with Local Authority day centre to provide work experience for adults with learning difficulties (2009 ongoing)
- Dart Training, NVQ Work Experience Placement volunteers, Grounds Section, 2009 ongoing.
- Castle Training Project, Work experience for level 2 horticulture students (2011 ongoing)
- Nottingham in Bloom, Friends Group and Grounds Section with
- Nottingham City Council, 2009/10/11 ongoing annual partnership.
- Community Taster Day, Friends Group Volunteers and Grounds Section 2009/10/11 ongoing annual event.
- School Science Week supporting activities at the Lakeside Pavilion (2010 ongoing)
- Highfields Park 2010, with NCC Rangers /Lakeside and Biology School
- UN Student Volunteers join the Friends Group to work on garden restoration project at Hugh Stewart House. (Project 2010/11 ongoing)
- Estates Grounds section working in partnership with the Highfields Park user committee (2000 ongoing) and providing partnership support for the Nottingham City Council bid to the Heritage Lottery Fund to restore Highfields Park (2011 ongoing)
- National Gardens Scheme annual opening at University Park and in 2012 Sutton Bonington Arboretum will also open, supporting other charities.
- Friends Group in partnership with Lakeside team, providing sponsorship for a sustainable schools and family outdoor education pack (2011 ongoing)

## Completed Landscape Projects 2010 -2011

1. Cycle route renovation works—some minor areas will need additional follow up work
2. New tree plantings in mitigation of cycle route tree losses
3. Landscaping to Jubilee Drive Link Road below Highfield House
4. Landscaping to Keighton Hill including the construction of the geo block wall system
5. Creation of New Footpath and associated landscape on Lenton House easement land
6. Hugh Stewart Hall Rockery—completed in association with Friends or University Park and Student Volunteers
7. Grove Farm Big Track footpath and cycle route in conjunction with Nottingham City Council
8. Landscaping to new Engineering and Science Learning Centre
9. Landscaping to new Maths Department formerly (IESSG)
10. Landscaping to new Bio-Energy Building including new water features
11. Landscaping to new Bio-Science Building
12. Landscape renewals at East Midlands Conference Centre including



- installation of new steps to the south aspect
13. Relocation of Bramley Apple Orchard using tree spade to accommodate new Hotel Construction
  14. Installation of New Cricket Square at Grove Farm in preparation for the Wind Farm Development
  15. Levelling of Turf Sports facilities at Highfields Sports Grounds approximately 2.5 hectares of land levelled and reseeded.
  16. Installation of new 1st Team Football pitch at Highfields Sports Ground aligned to compliment the new Vaughan Parry Williams Pavilion
  17. Florence Boot Hall Quadrangle landscape renewal
  18. Jubilee Campus NCSL access road—clearance of original planting and replace with turf
  19. Assist Nottingham City Council with the refurbishment of the Rock Garden on Highfields Park
  20. Introduction of Bee Hives to King's Meadow Campus
  21. Sherwood Hall patio creation



Student Volunteers and University Grounds Staff Working on Highfields Park in February 2011

	<b>NOTTINGHAM UNIVERSITY GROUNDS SECTION AWARDS</b>
1995	Nottingham in Bloom – Category Winner – Best Spring Bedding Display
1997	Nottingham in Bloom – Overall Second
1998	Nottingham in Bloom – Overall Second
1999	Nottingham in Bloom – Overall Third
2000	Nottingham in Bloom – Outstanding Long Term Contribution
2001	East Midlands in Bloom – ILAM Award for Horticultural Excellence
2001	Nottingham in Bloom – Award for the Best City Landscape
2002	Civic Trust – National Award (details to be confirmed)
2003	Green Flag Award for University Park
2003	East Midlands in Bloom – Judges Award for the Landscape at Jubilee Campus
2003	Nottingham in Bloom – Best Business Garden for North Entrance Display
2004	Civic Trust Green Flag Award for University Park
2004	Nottingham in Bloom – Best Business Premises 2004
2005	Civic Trust Green Flag Award for University Park
2005	Civic Society Commendation (linked to Green Flag)
2005	Britain in Bloom UK Finals 'Public Park Award' - a special discretionary award "presented to the park designed for horticultural excellence, giving delight to the visitor through appropriate planting, high standards of maintenance including infrastructure, conserving wildlife, cleanliness and features of interest."
2006	Civic Trust Green Flag Award for University Park
2006	Nottingham in Bloom Award – Best Business Premises – Gold Award
2007	Civic Trust Green Flag Award for University Park
2008	Civic Trust Green Flag Award for University Park
2008	East Midlands in Bloom 'Greenspace East Midlands Award for Horticultural Excellence'
2008	Royal Horticultural Society 'Britain's Best Flower Bed' (School/College category)
2008	Nottingham in Bloom Award-Best Business Premises- Gold Award
2009	Keep Britain Tidy Green Flag Award for University Park
2009	Nottingham in Bloom Award-Best Business Premises- Gold Award
2010	Keep Britain Tidy Green Flag Award for University Park
2010	Nottingham in Bloom Award-Best Business Premises- Gold Award
2010	Green Gown Award Highly Commended all Campus sites, Environmental association for Universities and Colleges
2011	Keep Britain Tidy Green Flag Park Award for University Park
2011	Nottingham in Bloom Award-Best Business Premises- Gold Award