

Welcome back to Nottingham

Your handy Students'
Union guide to living
in the community



Contents

| | |
|--|----|
| Introduction | 2 |
| Welcome from your Community Officer | 3 |
| Welcome from your Students' Union | 3 |
| Moving in checklist | 4 |
| Your role as a housemate & a neighbour | 5 |
| SU Advice and how to get in touch | 6 |
| Nottingham City Council | 7 |
| Binformation and recycling | 8 |
| Community protection | 9 |
| Pack for Good | 10 |
| Karnival & Student Housing Co-operative | 11 |
| Off-campus student affairs | 12 |
| Outsmart the opportunists | 13 |
| Safety tips from Nottinghamshire Fire and Rescue Service | 14 |
| Sustainable travel | 15 |
| Key contacts | 16 |



Introduction

You are now part of a **mixed community of people**, and this brings about certain roles and responsibilities that are very different to living in halls of residence.

We've put together this guide to **help support you** during your time living in the community, with lots of advice on how to be a **good neighbour, get involved and make a positive impact** on your local area.

Nottingham is a brilliant place to live, work and study and we want you to **make the most of your time** while you're in this great city.

Welcome from your Community Officer

Hi, my name is Daisy and I'm your Community Officer for the next academic year.

Elected by the student body, I represent you on issues such as housing, transport and sustainability when communicating with the University, the council and other local authorities. Moving off-campus into the local community can be both exciting and daunting; we've created this guide to make the transition as easy as possible!

We hope you have a fabulous year! But, if any issues, questions or queries do pop up, my inbox is always open - so just drop me a line!

Daisy Forster

Community Officer

   @uonsu_community



Hello! We're your Students' Union

We're an independent, student-led organisation that represents your needs, protects your rights and makes sure your voice is heard. Led by a team of elected SU Officers, we're a vibrant community 34,000 strong, made up of first-year students and PhDs, SU staff and volunteers. And you're automatically a member when you join the University of Nottingham.

Visit our website to find out more su.nottingham.ac.uk



Moving in checklist



Take this handy checklist with you when you move in, and check off each item once it's done.

Have you got your signed tenancy agreement and keys to get in?

Have you sorted a parking permit while you move your belongings from your car to your digs?

Locked your car and house while you're moving goods?

Checked the property for marks/scuffs/damage, and taken date-stamped photos?

Have you filled in the inventory? Make sure it accurately describes the property and its contents

Does everything work? If anything's broken, let the landlord or agent know (ideally in writing)

Have you recorded the gas, electric and water meter readings and contacted the suppliers?

Do you know where your water stop tap and electrical fuse box are?

Are your belongings insured?

Do you know the local bin collection details?

Introduced yourself to your neighbours?



Your role as a housemate & as a neighbour

Your role as a housemate:

Here are some **day-to-day** practicalities to help you have the best time in your University house:

Create a rota. You could sit down together to create a rota of all the chores and tasks the whole household will have responsibility for. And when something isn't quite right, try to avoid passive aggressive notes and revenge tactics; it's super important to talk to each other!

Spend time together. When you move in, try to organise something social that involves everyone in the house – maybe a movie night or making homemade pizzas together.

Communicate your boundaries. It's worth discussing with your new housemates what your different boundaries and expectations are to avoid conflict later on. Try to consider that everyone comes from different lifestyles and family experiences! Talk about how people feel about sharing food/kitchen utensils, cleanliness, visitors and noise levels.

If things escalate, please contact SU Advice to talk through the issues

Your role as a neighbour:

Here's how you can be considerate of neighbours:

Say hello! If you're friendly and approachable, you're much more likely to have a positive relationship with your neighbours.

Ordering a taxi? Remember to ask the driver not to sound their horn when they arrive and wait inside for the taxi to arrive to avoid noisy gatherings on your doorstep.

Heading out for the night? Be considerate of sleeping residents and keep the noise down as you walk into town and head home at the end of the night.

Going out with alcohol? It's not permitted to drink alcohol on the streets of Nottingham. Don't let your drink get poured down the drain, leave it at home!

Hosting? Always speak to neighbours and those living close by if you plan on having a few friends round, check it is okay with them. House parties particularly effect people in the community with work or school the next day. Please keep in mind that large, loud and late house parties are discouraged and any complaints may be passed onto the Police, Council and University.

Your Students' Union Advice team

Students' Union Advice provide free, impartial advice and information to all University of Nottingham students.

Independent from the University, the Advice team is made up of permanent members of Students' Union staff and our service is completely confidential.

We provide information and advice on a wide range of issues affecting students such as:

Housing advice – house hunting, contracts, deposits, issues with landlords, disrepair, disputes with housemates etc

Money advice – funding, debt, budgeting, benefits and utility/council tax bills etc

Course advice – extenuating circumstances, academic appeals, complaints, student code of discipline etc



Get in touch

E: suadvice@nottingham.ac.uk

T: 0115 846 8730

Office: C floor, Portland Building, University Park

You can find out more information about our service at
su.nottingham.ac.uk/advice

Nottingham City Council

Supporting students



Nottingham
City Council

Nottingham City Council is your local authority and as a citizen of Nottingham you have access to a whole host of information and services:

- Bin collections
- Report a problem such as a fly tipping
- Private landlords and tenants
- Safer housing team
- Student parking permits
- Community protection
- Report antisocial behaviour
- Your local councilors
- Local events



To access all this information

Visit [nottingham.city.gov.uk](https://www.nottingham.city.gov.uk) and twitter.com/mynottingham for the latest news and events

Report any bin, road or housing/landlord issues here:



Binformation and recycling

Which bin is which?

Green bin = General waste

- If there are six or more people in your house, you can buy additional bins from the council. Speak to your landlord or letting agent to check you qualify and they can provide.

Brown bin with grey lid = Recycling

- Make sure you check the “Recycle Right” list before putting things in your recycling bin, and remember that recycling shouldn’t be bagged or dirty!

Brown bin with brown lid = Garden waste

- Make sure that all food waste is put in your general waste bin or compost, not the garden waste bin!

Our top tips:

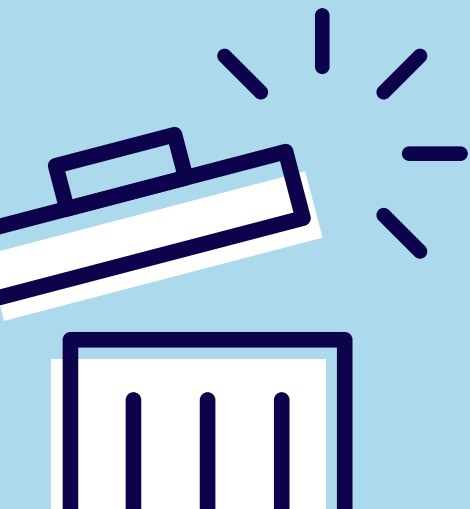
- Keep on top of your waste to avoid a fine
- Sign up for email bin alerts so you don’t miss collection day
- Take your bins off the street as soon as they’ve been emptied
- Support the environment by recycling as much as possible
- Speak to a neighbour and see if they have any space in their bin. As a last resort, neatly pile a few additional bags next to your general waste bin on collection day.

Find all the information you need at:

Waste Management



Recycle Right



“ ”

‘ello, ‘ello, ‘ello :

Welcome from Nottinghamshire Police

Nottinghamshire Police are here to keep you safe.

Nottingham’s crime rate has consistently fallen in recent years, however, if you are in a position where you need police support, you can contact the police on 101 or 999 in an emergency or report online.

You can register for updates in your local area

<https://www.nottinghamshirealert.co.uk/>

For further information and crime prevention advice visit

<https://www.nottinghamshire.police.uk/>

Meet your Community Protection Officers

Community Protection Officers (CPOs) operate in all areas of Nottingham including Lenton, Radford and Dunkirk. They work for Nottingham City Council and liaise closely with the University and Police to conduct late night reassurance patrols in the area.

CPOs will encourage you to be considerate of your noise levels, parking and waste management.

Feel free to ask them any questions or raise any concerns!





PACK FOR GOOD

MAKE PACKING EASIER BY DONATING UNWANTED STUFF

Please put your items in the **red** BHF donation points.



University of Nottingham
UK | CHINA | MALAYSIA



©British Heart Foundation, a registered charity in England & Wales (225971) and Scotland (SC039426)

Donation points across the area

1. Ilkeston Road – Garden Street
2. Nottingham Two – Ilkeston Road
3. Radford Recreation Ground
4. Derby Road
5. The Lenton Centre
6. Lenton Boulevard
7. Lenton Recreation Ground
8. Park Road Tesco
9. Woodside Shops
10. Derby Road – Gatehouse Lodge
11. Dunkirk Community Centre



Your donations help to save lives and diverts waste from landfill through re selling, reuse and recycling.
nottingham.ac.uk/go/EndOfTerm



Volunteering and fundraising



Everything to do with volunteering and fundraising at the University of Nottingham Students' Union goes through Karnival, UoN's student-led Raising and Giving (RAG) service.

Karnival supports a range of local, national and international charities as well as campaigns like Movember. They put the *fun* in fundraising, running events throughout the year such as fashion shows, charity balls and the famous Karni Koncert.

Karnival is perhaps most famous for organising amazing charity challenges, and this year is no exception! UoN students can sign up to tackle the UK Three Peaks Challenge, trek through the stunning Moroccan Atlas Mountains or even go all the way to Nepal to trek to Everest Base Camp - all to fundraise for this year's amazing charities: the Meningitis Research Foundation and Amnesty International. If you're interested in any of these challenges, please get in touch via insta or email.

As well as fundraising, Karnival also advertises a wide range of local volunteering opportunities, and will help you find one that suits you. Check out their volunteering page at uonsu.com/volunteering:

It's easy to get started, just get in touch with Karnival to find out more.



Get in touch

E: karni@uonsu.com

Facebook: @NottsKarni

Instagram: @nottinghamkarnival

Follow us:



Want better housing solutions for students? Join the Nottingham Student Housing Co-op!

A Housing Co-operative is a democratic form of housing under the control of residents, imbedding community, accountability and student control in our homes.



The Inter Campus Co-operative Notts (ICC Notts) project is a group establishing a student housing co-operative in Nottingham and its surrounding areas. We need students to join and help run the initiative. **Register your interest here!**



Off-campus student affairs

Many of you choose to move off-campus during your time at University. We have lots of information, advice and guidance available to support you when you become a member of your local community. This includes guidance on what it takes to manage your private home, advice on being a good neighbour and ambassador for the University, as well as important information on crime prevention and safety.

Our team are here to help you make the most of living in your local community. **Scan the QR code** to find out more.



Neighbourhood Helpline

The University of Nottingham is committed to doing everything we can to provide a safe and supportive environment for everyone. Nottingham is a pleasant and inclusive place to study and work but, as with any community, issues can crop up.

Report and Support

If you or someone you know has experienced or witnessed an incident, you can report it via our Report + Support system. You can either report it anonymously or ask to speak an advisor. By doing that, you're not making a formal report to the University; it just means you can access the support you need to make an informed decision.

Messages are quickly dealt with, but this isn't an emergency helpline.

Call **0115 846 8666**, email offcampus@nottingham.ac.uk or scan this QR code.



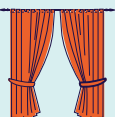
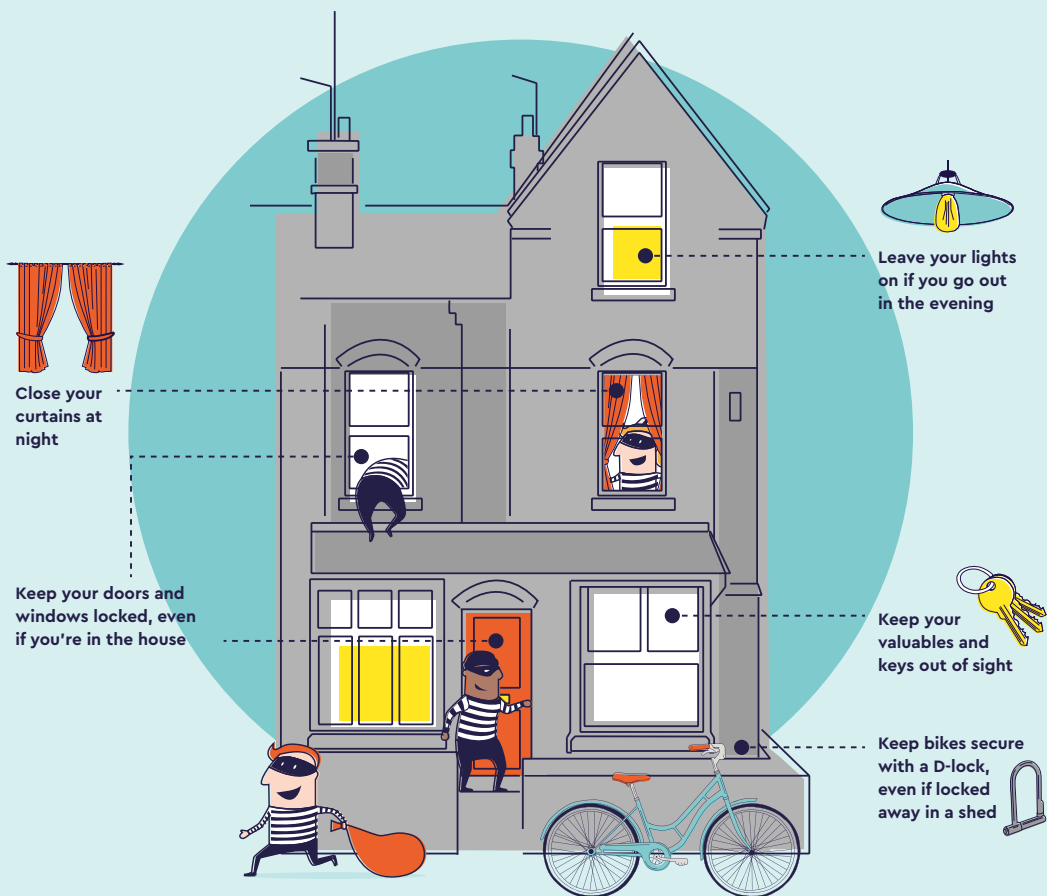
Stay safe together

Stick together to enjoy a safe night out.
Don't leave your friends.



Outsmart the opportunists

Keep your stuff safe, whether you're at home, out for the evening or on holiday.



Close your curtains at night

Keep your doors and windows locked, even if you're in the house



Leave your lights on if you go out in the evening



Keep your valuables and keys out of sight



Keep bikes secure with a D-lock, even if locked away in a shed

Student safety tips from Nottinghamshire Fire and Rescue Service

Don't silence your smoke alarms:

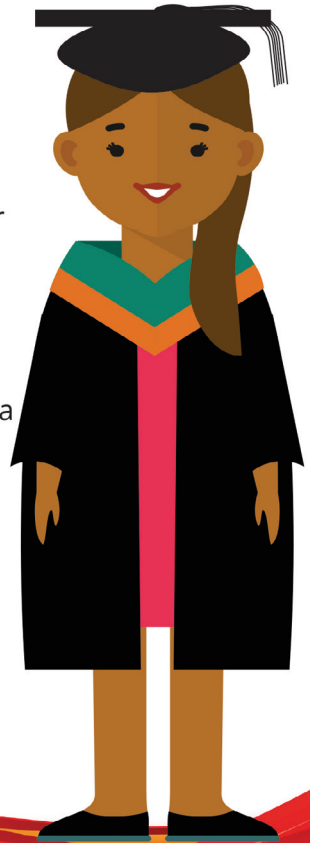
- Never remove batteries or cover up smoke alarms
- Speak to the building maintenance team if alarms aren't working or others tamper with them

Cooking up a storm:

- Never leave cooking unattended
- Avoid cooking after a night out and after drinking alcohol as this can impair your senses and movement

Show fire the door:

- Remember that fire doors are there for a reason
- Never prop fire doors open
- Never remove a fire extinguisher to use as a door stop



To find out more, visit our student safety page on our website, under 'Your Safety.'

www.notts-fire.gov.uk



Sustainable travel

Nottingham has great public transport links with a fantastic bus and tram network so there's no need to bring your car. Parking is extremely limited for residents in Nottingham and on our campuses. If you do have to bring your car to University, you may need to buy a parking permit.

Taxi

Sometimes a taxi is the best option.

We've joined forces with **UNICAB** to bring you the Safer Taxi Scheme so that you'll always be able to get home safely.

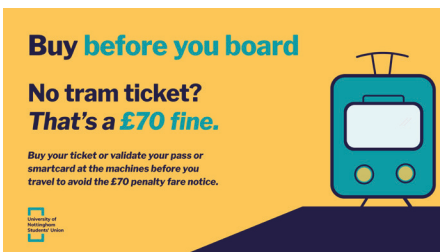
Text UNICAB TO 80818 or call +44 (0) 1159 500 500

Our fixed price list means that a taxi from the city centre to Lenton is **only £5!** It's cash only, but in an emergency you can say that you want to use the SU Emergency Taxi Scheme and they will get you home safely. For more information visit <https://unicab.app>

E-Scooters

Zero-emission e-scooters are available for hire in Nottingham.

They're a great way to get around the city, but make sure you know how to use them safely to avoid potential penalties and to keep yourself and others safe. You need at least a provisional driving licence to use the scooters and should take similar care as you would driving or riding a bike. Rules of use are to ride sober, park sensibly, stick to roads and cycle paths and wear a helmet.





Key contacts:

SU Advice:



Waste Management:



City Council Reporting:



Recycle Right:



Off Campus Affairs:



Safer Taxi Scheme:



Nottingham Student Housing Co-Operative:



Follow us:

Twitter: @UoNSU

su.nottingham.ac.uk

Facebook: @UofNSU

Instagram: @uonsu



Created in Partnership with: **The University of Nottingham**



University of Nottingham
UK | CHINA | MALAYSIA

