



University of
Nottingham

UK | CHINA | MALAYSIA

MSc Environmental Leadership and Management



Contents

Our course	2
Nottingham city	4
Why study with us?	6
What you will learn	8
Career and professional development	12
Advisory Board	14
Applying	15

Become a leading force for change

The MSc Environmental Leadership and Management is designed to develop environmental leaders who are equipped to drive and direct change in organisations, in order to address the profound environmental challenges of our time.

It is ideal for anyone who aspires to be a leader who can generate positive change for the environment, both within organisations and broader society. Its dual focus on scientific and people skills ensures students are prepared to lead in roles that include sustainability management, environmental consulting, green policy development, and environmental entrepreneurship.

Governments and industry alike must be dynamic in their responses to global environmental challenges. As of May 2019, 194 states within the United Nations Framework Convention on Climate Change (UNFCCC) had signed The Paris Agreement. It aims to implement urgent measures to reduce greenhouse gas emissions, and increase renewables and energy efficiency whilst also enabling economies to grow sustainably.

This programme is one of the first of its kind in the UK. It will develop the knowledge, skills and competencies you need to make a difference. It will help you to forge the networks required to deliver practical environmental solutions, and direct transformative change in diverse social, professional and disciplinary settings.

Its unique features include:

- Opportunities to engage with experienced environmental leaders from industry and commerce
- A focus on the development of skills-based competencies needed for employment
- The ability to tailor your degree to a specific environmental specialism
- Alongside your MSc studies, you will have the opportunity to gain a Level 5 Certificate awarded by the Institute of Leadership and Management

“The environmental crisis we face has ignited public passions and focused discussions in communities, boardrooms and ministries across the world. We need a new generation of environmental leaders who can guide this new urgency towards responses that address the magnitude of the challenge.”

Dr Jamie Gordon, Regional Manager, Latin America, WWF-UK



A city of ecological innovation

Nottingham is an old city with a rich history and a forward-thinking culture. It's a fantastic place to study and work.

Recognising the need to transform the way we produce and use energy, sustainably manage waste and shorten supply chains, Nottingham City Council has set out a plan for the city to become the UK's first carbon-neutral city by 2028. Nottingham also has one of the UK's largest electric bus fleets, a cycle hire scheme and bicycle hubs, as well as an expanded tram network running on 100% renewable energy.

The University of Nottingham also has a Carbon Management Plan, to ensure that we continue to reduce our carbon footprint whilst growing and developing our estate. We ensure all of our food waste is recycled and converted into bio-gas and fertiliser, and we are committed to zero use of products containing palm oil.



Time to travel

Getting here is easy. Nottingham is less than two hours from London, with excellent transport links to the capital and the rest of the UK.

East Midlands Airport, one of the UK's fastest growing airports, is only 40 minutes from the city centre via a 24-hour bus service.

Birmingham International Airport is less than one hour from Nottingham by car.

Frequent rail services run from Nottingham to major UK cities, including London every 30 minutes. The Eurostar connection at St Pancras International in London allows you to travel from Nottingham to Paris or Brussels in just a few hours.



Why study with us?

Discover our global connections

**The University of Nottingham
is a member of the prestigious
Russell Group.**

It is the place where the MRI scanner was invented, where you'll find the world's largest group of human rights scholars and where the answers to global environmental challenges are being unearthed.

With campuses in the UK, China and Malaysia, the University of Nottingham has a global reputation for teaching and research excellence.

The University of Nottingham has been recognised as delivering a Gold standard in the Teaching Excellence Framework (TEF). TEF is based on rankings/outcomes for student satisfaction, student retention and graduate employment.

TEF Gold

44,500
students
from over
150 countries

97%
of our research
is internationally
recognised

Research Excellence
Framework, 2014

**A research
portfolio in
excess of
£600m**

A commitment to sustainability

The School of Geography is based on the beautiful University Park Campus – a 300 acre oasis with long-established woodland, contemporary gardens and a lake. We have won the Green Flag Award every year from 2003, and we remain the only university to have achieved this status. We utilise a variety of organic gardening practices and manage our grounds and gardens to encourage biodiversity.

Take a virtual tour at
nottingham.ac.uk/virtualnottingham

MSc Environmental Leadership and Management

There is growing recognition that addressing environmental and sustainability challenges requires a unique combination of fundamental knowledge, practical problem-solving skills and interpersonal competencies.

All of these essential elements are integrated within the MSc Environmental Leadership and Management, and it is this distinctive holistic approach that will provide you with the skillset critical for success in this field.

Personal capacities to lead

You will identify and develop the character and personal competencies necessary to be an effective environmental leader. Through practical experience, you will learn to utilise your leadership, communication and management skills to be a change driver in a competitive organisational context, whilst also championing the environment.



Gaining environmental knowledge

You will develop a deep understanding of the key environmental and sustainability challenges facing the world today, such as water quality and supply, clean air, climate change, urbanisation, biodiversity loss and sustainable energy resources.

You will be exposed to cutting edge scientific and social science thinking about how to measure, analyse and address these challenges.



Developing skills for environmental problem solving

You will develop your ability to analyse information so that you can make sound judgements, find innovative solutions and take achievable actions that will meet the needs of organisations and the environment.

You will gain the skills necessary for identifying, evaluating and mapping environmental challenges, visioning solutions and strategising pathways for change.



An inspirational curriculum

The programme content has been designed to develop your capability to solve complex and diverse environmental challenges, and bring about effective change.

A broad knowledge

The core curriculum will give you an understanding of fundamental environmental processes and the ways in which contemporary environmental decisions are made. You will develop as an informed, environmentally aware leader who is ready to be an effective agent of change and influence within organisations.

Core themes could include:

- Leadership
- Sustainability
- Environmental processes
- Decision making in an environmental context
- Research methods
- Project design

Dual degree option

After you complete the taught component of our MSc Environmental Leadership and Management, you could transfer onto our dual degree and spend a second year in Germany studying at the University of Tübingen, subject to meeting their entry criteria.

We offer a carefully matched programme that is taught in English, and you will work on your dissertation with support from academics at Nottingham and Tübingen.

For more details, please visit:
nottingham.ac.uk/go/elm

Essential leadership and management development

The programme also incorporates ILM tuition delivered in collaboration with GWA Ltd - an ILM Approved Centre. It will result in the professional qualification of a Level 5 Certificate in Leadership and Management. The ILM tuition will include face-to-face teaching in the autumn semester, plus supported assignment and project work undertaken alongside your MSc studies. It will cover topics such as:

- Leadership styles
- Motivating and influencing
- Planning and managing change
- Innovation
- Project planning and managing



Valuable practical skills

Through the completion of an individual project with an emphasis on environmental practice, you will also acquire the skills needed for effective design of environmentally focussed research projects and decision-making tasks.

The project will be supervised by an academic from the School of Geography and aligned with a relevant organisation (for example, environmental NGOs; environmental consultancies; government agencies; environmental research centres and more). You will also have the opportunity to apply for the University placement scheme, which facilitates work experience hosted by an environmental organisation. This experience in an organisational context will help to demonstrate your abilities as an effective environmental leader to future employers.

Opportunity to specialise

In addition to the core curriculum, you may also specialise in a specific area of environmental challenge that aligns with your personal career aspirations, by selecting an individual pathway covering issues such as:

- Climate risk
- Sustainable ecosystems and water resources

Within each pathway, the teaching and learning is designed to develop theoretical and applied knowledge alongside practical competencies, so that you become equipped to be a leader that can manage specific contemporary global environmental challenges and their impacts. Your degree award will identify your area of specialisation, ensuring employers can be made aware of your skills.



Find out more and apply: nottingham.ac.uk/go/elm

A career that will make a difference

Your skills as a solutions-orientated change agent will enhance your career opportunities across a range of sectors, and could enable you to lead fundamental, system-wide reorganisation across technological, economic and social arenas.

A 2019 report by the Intergovernmental Science-Policy Platform on Biodiversity and Ecosystem Services (IPBES) warned that current behaviours directly threaten the foundations of our economies, livelihoods, food security, health and quality of life worldwide.

Plastic pollution has increased tenfold since 1980, and the millions of tons of heavy metals, solvents, toxic sludge and other industrial wastes that are dumped annually into the world's waters, are having a direct impact on amphibians, corals and marine mammals.

As a graduate of our MSc Environmental Leadership and Management, you will have developed leadership skills and specialist knowledge that could contribute to transformative change at a local and global level, which is required to halt this trajectory.

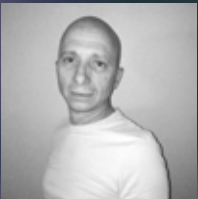
Find out more and apply: nottingham.ac.uk/go/elm

Our Advisory Board

These professional environmental leaders review our curriculum to ensure it aligns with the genuine needs of global employers, and promotes solutions to real-world issues.

Dr Jamie Gordon

Regional Manager, Latin America, WWF-UK
Jamie is a forester who has spent over twenty years working on different aspects of Latin American forest conservation. He is currently managing projects in Bolivia, Brazil, Colombia.



Oliver Harmar

Yorkshire Area Director, Environment Agency
Oliver has key expertise in flood risk modelling and forecasting and has over 15 years' experience in the sector. He has a PhD in Geomorphology and Hydrology from the University of Nottingham.



Dr Kevin Skinner

Consultant, Atkins Global
Kevin has a wide breadth of experience in river management with key expertise in fluvial geomorphology and river restoration. He has worked in the sector for over 20 years.



Tony Cooke

Co-Founder and CEO, One Planet Education Networks
Tony is a former corporate executive who has dedicated his career to the sustainable business agenda. He is an Honorary Associate Professor in Sustainability Leadership at Nottingham.



Thinking of applying?

Entry requirements

Applicants typically require a 2:1 (or international equivalent) in a suitable discipline. Please contact the programme director for more information.

English language requirements

For applicants whose first language is not English, we require IELTS 6.5 (no less than 6.0 in any element).

Academic English preparation and support

Accredited by the British Council for the teaching of English in the UK, the University's Centre for English Language Education provides high quality preparation and support.

Our pre-sessional courses take your English language and academic skills to the level you need to progress to postgraduate study without taking IELTS again.

Find out more at nottingham.ac.uk/cele

A support network built around you

The University of Nottingham provides a wide range of support services for postgraduate students. You will have access to the University's Researcher Academy – a dedicated facility offering support and guidance. It offers induction events, training opportunities, funding, careers support and social and sporting events. Find out more at nottingham.ac.uk/researcher-academy






Find out more and apply: nottingham.ac.uk/go/elm



University of
Nottingham

UK | CHINA | MALAYSIA

**For postgraduate enquiries contact:
Student Recruitment Support Hub**

-  +44 (0)115 951 5559
-  nottingham.ac.uk/contact
-  UoNGeography
-  @UoNGeography
-  nottingham.ac.uk/go/elm

This publication is available in
alternative formats:

+44 (0)115 951 5559

This brochure has been drafted in advance of the academic year to which it applies. Every effort has been made to ensure that the information contained in this brochure is accurate at the time of publishing, but changes (for example to course content) are likely to occur given the interval between publication and commencement of the course. It is therefore very important to check our website for any updates before you apply for the course by following nottingham.ac.uk/pgstudy. Where there is a difference between the contents of this brochure and our website, the contents of the website take precedence.

© University of Nottingham 2020. All rights reserved.