

## Country lives

Exploring the  
English countryside  
from 1800

# Country lives

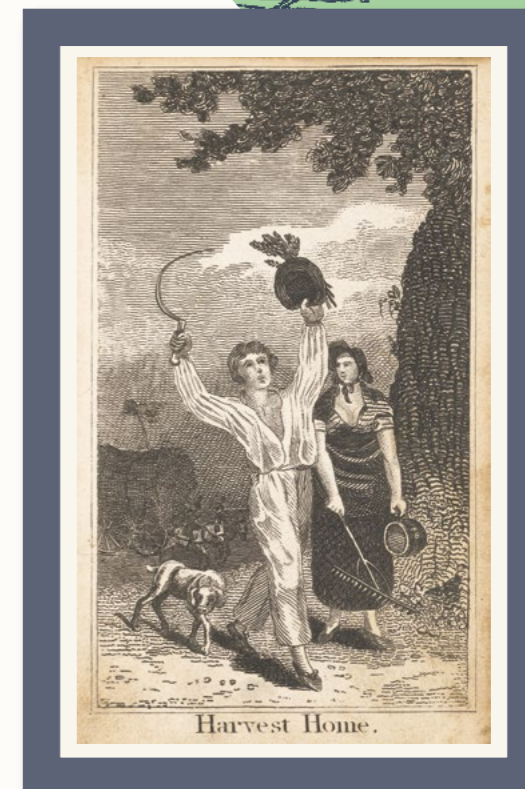
From idyllic and picturesque scenes to the realities of rural life, this exhibition explores the powerful and enduring impact the English countryside has had on people over the last two hundred years.

The English countryside has long been – and continues to be – a place to live, work, play, explore, protest and reimagine. It was a place of both continuity and change, which played a pivotal role in society, culture and the economy. *Country lives* highlights how writers, artists, tourists, inhabitants and workers depicted and experienced the countryside, showing what it meant to different people.

Items from Manuscripts and Special Collections, including photographs, sketches, books, letters, maps and board games, are brought together for the first time to illuminate a wide range of country lives and different aspects of the countryside.

This exhibition is jointly curated by University of Nottingham Libraries, Manuscripts and Special Collections, and Dr Sarah Holland, Department of History, University of Nottingham.

Picture: Image from Mary Elliott, *Rural employments, or, A peep into village concerns* (1820). University of Nottingham, Briggs Collection LT210.S/E5

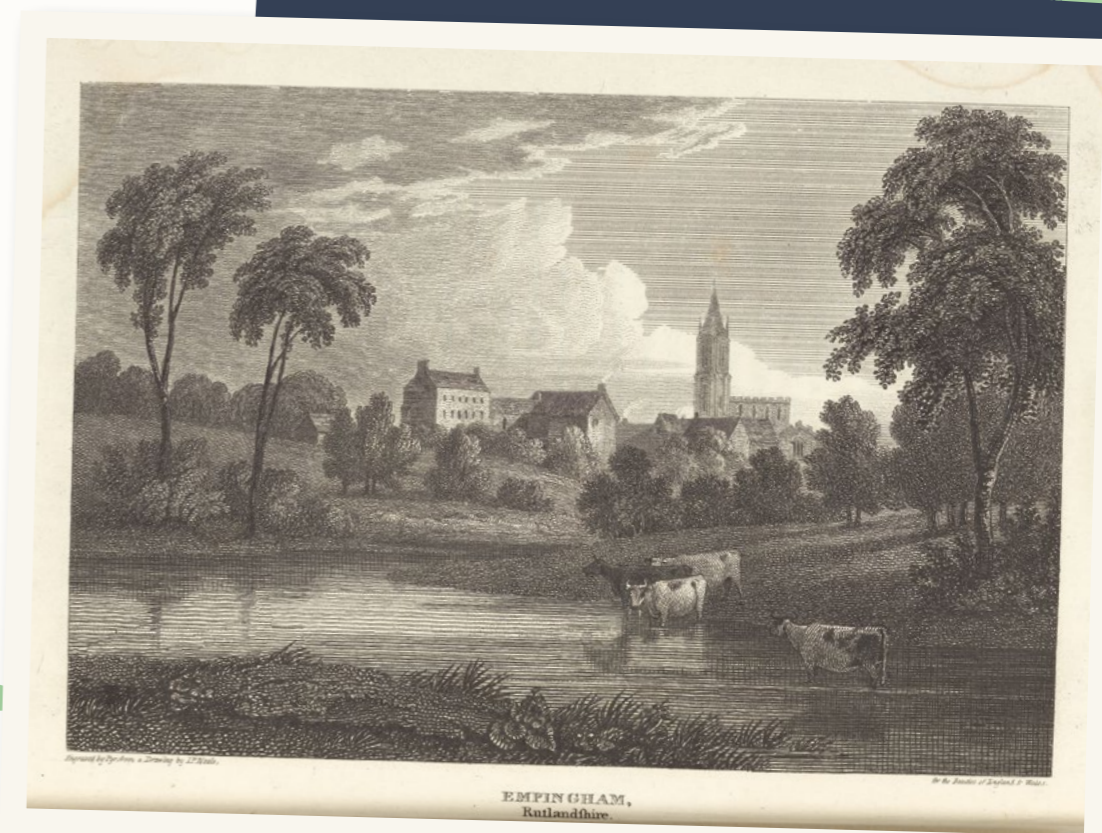


Above: Land Army girls egg collecting and recording, Sutton Bonington campus, 1939. University of Nottingham Photographs, UMP/5/69



Left: 'Old English Sow', from David Low, *The breeds of the domestic animals of the British Islands*, Volume 2 (1842). University of Nottingham, Special Collection Oversize X SF105.25.G7.L6

Right: Illustration of Empingham, Rutland, 1813, from *The beauties of England and Wales*, Vol 12/2 (1801-1816). University of Nottingham, Special Collection DA667.B4



University of  
Nottingham  
UK | CHINA | MALAYSIA

University of Nottingham  
Libraries, Manuscripts and  
Special Collections



Part of the University  
of Nottingham