



# Laxton

## Wildlife and Conservation

Stuart Rose  
Laxton Farmer and Clerk to the  
Gaits & Commons

Nottingham University, 13th May 2009

# Stuart Rose

- Born and bred in Laxton – 3rd generation
  - Tenant Farmer
  - Clerk to the Gaits & Commons
  - Qualified agricultural engineer
  - Guided walks and talks
  - Blacksmithing
  - Catering

# LAXTON, Nottinghamshire

England's last open field farming village

Managed by the Jury and the Court Leet

10 miles north of Newark-on-Trent, 4 miles east of Ollerton  
between the A614 and the A1



# Lords Of The Manor Of Laxton

Geoffrey Alselin. 1086.

Robert de Caux. 1140. - daughter of Geoffrey Alselin

Robert de Caux. d. 1186.

Matilda de Caux. d. 1224. - Adam de Birkin

John de Birkin.

Thomas de Birkin. d. 1250.

Isabella de Birkin. d. 1252 - Robert de Everingham

Adam de Everingham. d. 1280.

Robert de Everingham. d. 1287.

Adam de Everingham. d. 1341.

Adam de Everingham. d. 1387.

Reginald de Everingham. d. 1398.

Katherine de Everingham. (niece of Reginald) - Sir John Etton. d. 1433.

Miles Etton. d. 1438.

Isabella Etton. - John Roos. d. 1458.

Robert Roos.

Humphrey Roos. d. 1521. - Anne Restwold, niece of Archbishop Rotherham

Francis Roos. d. 1578.

Peter Roos. d. 1605.

Gilbert Roos. d. 1621.

Sold Manor to George Villiers, Marquis of Buckingham, 1618.

Duke of Buckingham sold Manor to Sir William Courten, 1625.

William Courten, son of above, sold Manor to

Robert Pierrepont, 1<sup>st</sup> Earl of Kingston in 1640.

William Pierrepont, 2<sup>nd</sup> son of above. d. 1679.

Robert Pierrepont, 3<sup>rd</sup> Earl of Kingston, grandson of above. d. 1681.

William Pierrepont, 4<sup>th</sup> Earl of Kingston. d. 1690.

Evelyn Pierrepont, 5<sup>th</sup> Earl of Kingston, Duke of Kingston, 1715. d. 1726.

Evelyn Pierrepont, 2<sup>nd</sup> Duke of Kingston. d. 1773. (grandson of above)

Elizabeth Pierrepont, Duchess of Kingston, wife of above. d. 1788.

Charles Medows, Viscount Newark. 1796, 1<sup>st</sup> cousin of 2<sup>nd</sup> Duke, created Earl Manvers 1806.  
d. 1816 (took name of Pierrepont)

Charles Herbert Pierrepont, 2<sup>nd</sup> Earl Manvers. d. 1860.

Sydney William Herbert Pierrepont, 3<sup>rd</sup> Earl Manvers. d. 1900.

Charles William Sydney Pierrepont, 4<sup>th</sup> Earl Manvers. d. 1926.

Evelyn Robert Pierrepont, 5<sup>th</sup> Earl Manvers.

The Minister of Agriculture.

The Crown Commissioners 1981

# Saxton Estate

**Open Fields**

Moorgate Farm
Isle Farm
Manor Farm
Bottom Farm
New House Farm
Wantage Farm
Step Farm
Titchell Farm
Downside Inn Farm
Bar Farm
New Bar Farm
Church Farm
High Street Farm
School Farm
Wy House Farm
Sedby Farm
Live Farm
Home View Farm
Top Farm
Town End Farm
Buildings Farm
Corner Farm

**Saxton**

- Enclosed Farms
- Matted Roads
- Styles and Grass Tracks




**Scale in Feet**

**Compass Rose**

Open Fields

- |    |                   |
|----|-------------------|
| 1  | Moorgate Farm     |
| 2  | Idle Farm         |
| 3  | Manor Farm        |
| 4  | Sutton Farm       |
| 5  | New House Farm    |
| 6  | Vealage Farm      |
| 7  | Steeple Farm      |
| 8  | Twistall Farm     |
| 9  | Donsdale van Farm |
| 10 | Bar Farm          |
| 11 | New Bar Farm      |
| 12 | Church Farm       |
| 13 | High Street Farm  |
| 14 | School Farm       |
| 15 | Joy House Farm    |
| 16 | Smiddy Farm       |
| 17 | Lime Farm         |
| 18 | Home View Farm    |
| 19 | Rat Farm          |
| 20 | Town End Farm     |
| 21 | Buildings Farm    |
| 22 | Corner Farm       |

Legend

- |   |                       |
|---|-----------------------|
|  | Exposed Walls         |
|  | Metallized Roofs      |
|  | Trees and Grass Plots |

Spiele des Tiers





# Saxton Estate

**Open Fields**

Moorgate Farm
Isle Farm
Manor Farm
Bottom Farm
New House Farm
Wantage Farm
Step Farm
Titchell Farm
Downside Inn Farm
Bar Farm
New Bar Farm
Church Farm
High Street Farm
School Farm
Wy House Farm
Sedby Farm
Live Farm
Home View Farm
Top Farm
Town End Farm
Buildings Farm
Corner Farm

**Saxton**

- Enclosed Farms
- Matted Roads
- Styles and Grass Tracks




**Scale in Feet**

**Compass Rose**

Open Fields

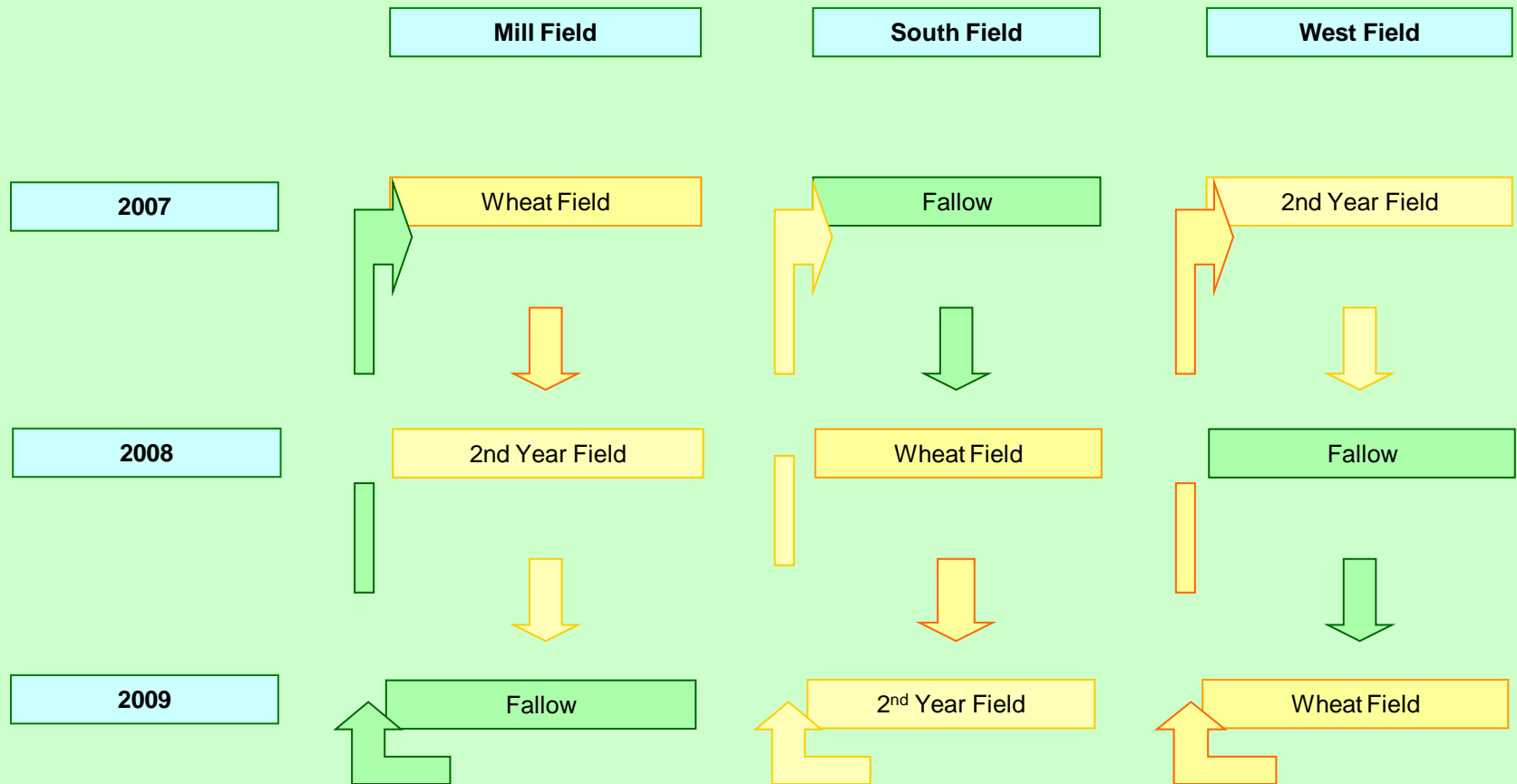
- |    |                   |
|----|-------------------|
| 1  | Moorgate Farm     |
| 2  | Idle Farm         |
| 3  | Manor Farm        |
| 4  | Sutton Farm       |
| 5  | New House Farm    |
| 6  | Vealage Farm      |
| 7  | Steeple Farm      |
| 8  | Twistall Farm     |
| 9  | Donsdale van Farm |
| 10 | Bar Farm          |
| 11 | New Bar Farm      |
| 12 | Church Farm       |
| 13 | High Street Farm  |
| 14 | School Farm       |
| 15 | Joy House Farm    |
| 16 | Smiddy Farm       |
| 17 | Lime Farm         |
| 18 | Home View Farm    |
| 19 | Rise Farm         |
| 20 | Town End Farm     |
| 21 | Buildings Farm    |
| 22 | Corner Farm       |

Legend

- |   |                        |
|---|------------------------|
|  | Excavated Footh        |
|  | Matted Slough          |
|  | Sykes and Grass Tracts |

Spiele des Tiers

# Laxton's Field Rotation





# Countryside Stewardship

Year 16

## HLS Target area

- Overwintered stubble
- Unimproved meadow land (sykes)
- Conservation headlands (buffer zones)
- Public Access
- Educational Access
- Capital Items e.g. gates, hedge restoration





English Partridge



Skylark



Lapwing / Green Plover



Brown Hare







Adders Tongue



Lady's Bedstraw



Green Winged Orchid





**WAG Screen Filming:**

The Lady of Shalott (2008) top

The Luttrell Psalter (2007)



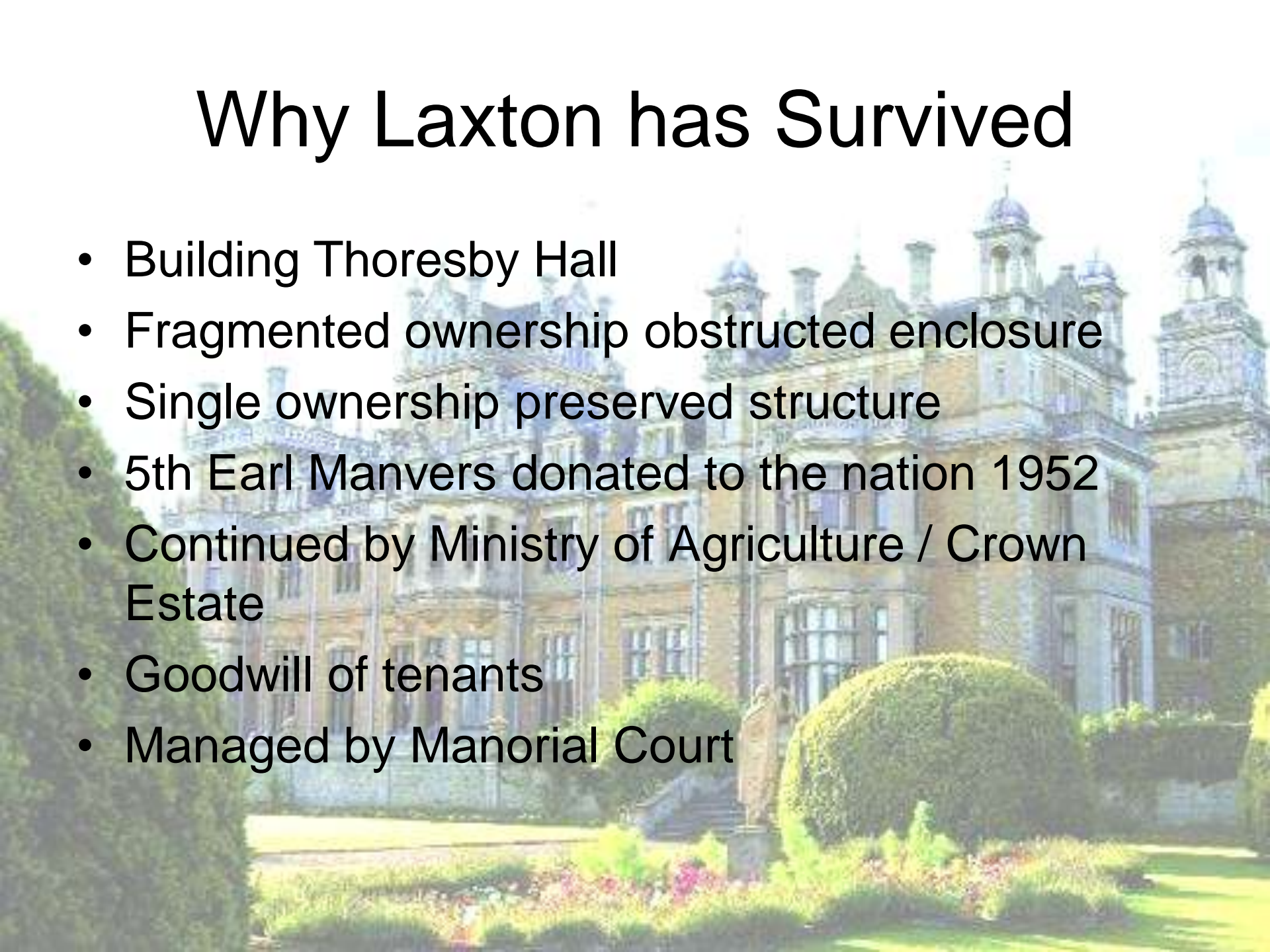
**Photo: Julian Hughes, Nottingham Contemporary**





# Why Laxton has Survived

- Building Thoresby Hall
- Fragmented ownership obstructed enclosure
- Single ownership preserved structure
- 5th Earl Manvers donated to the nation 1952
- Continued by Ministry of Agriculture / Crown Estate
- Goodwill of tenants
- Managed by Manorial Court







# What we are Achieving

## Preserving

- the open field farming system
- an agricultural landscape pre-enclosure
- structure and architecture of the village
- village community and traditions



# Laxton's Supporters

- Crown Estate & Carter Jonas
- English Nature
- DEFRA
- Newark & Sherwood District Council
- English Heritage
- Nottingham University
- RSPB and Notts Wildlife Volunteers

Any Questions?



A rural landscape featuring a field of golden hay bales in the background, a green field in the middle ground, and a line of trees and bushes in the foreground. The scene is framed by tree branches on the left and right sides.

# Thank you

Contact:

Stuart Rose 07939 228353

[stuart.rose@laxtonnotts.org.uk](mailto:stuart.rose@laxtonnotts.org.uk)