

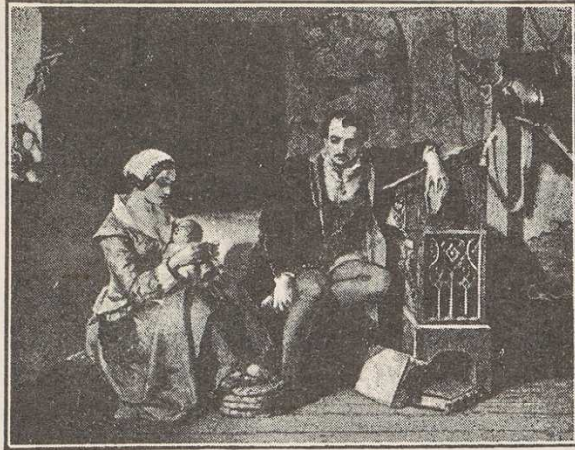
Textile Business Archives

Manuscripts and Special Collections on King's Meadow Campus has a number of business archive collections relating to the lace and hosiery industries which were once a major source of employment in the East Midlands. The invention in 1589 of the stocking frame by Nottinghamshire curate William Lee started centuries of development in machine made knitting. The framework knitters of the East Midlands produced stockings and hosiery on machines worked in their homes or in small workshops but with the introduction of steam power, factory production arrived. The frames were adapted to produce the machine made lace which Nottingham would become famous for. The grand warehouses of the Lace Market attracted buyers from all over the world and for a time, Nottingham was producing most of the lace machines which were widely exported.

More examples from the textile business archive collections can be seen in the Weston Gallery exhibition *Fully Fashioned: Archival Remnants of the Textile Trade* which runs at Lakeside Arts until 1st December 2019.

To find out more about our business collections and view our guides to understanding and using historical financial and business records, please visit our website, or to access our collections, please contact us.

nottingham.ac.uk/mss | @mssUniNott | mss-library@nottingham.ac.uk



The Knitters' Circular and Monthly Record.

An organ for the Hosiery Trade.

Telegraphic Address—"KNITTER, LEICESTER."

No. 1.]

LEICESTER, JANUARY, 1894.

[VOL. I.

A depiction of William Lee's inspiration for the stocking frame from Vol. 1 of *The Knitters' Circular and Monthly Record* (Leicester, 1894)

(Ref: PSC ACC 2971)



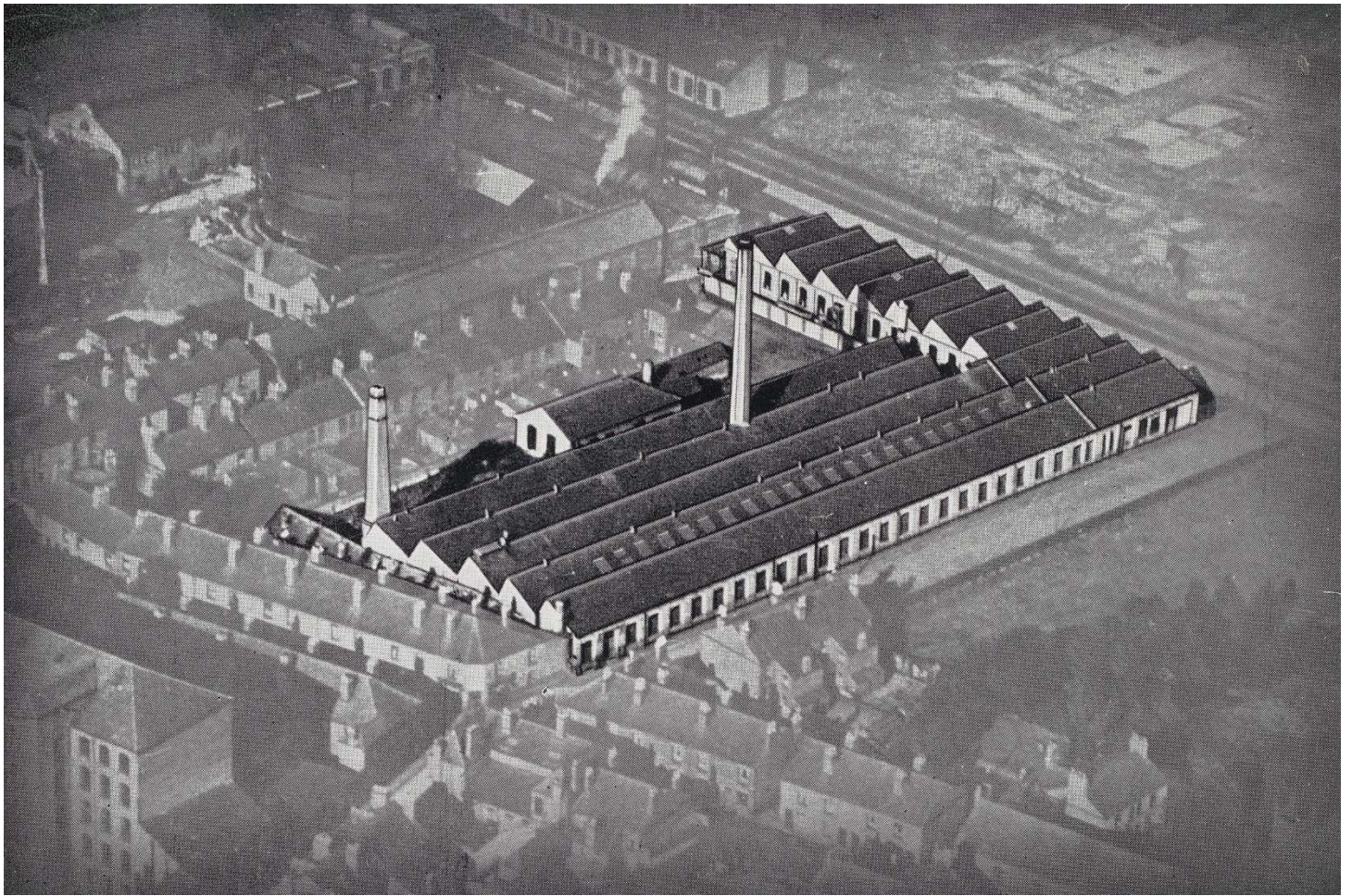
An employee working the last stocking frame at Frederick Longdon & Co. Ltd, Derby, c.1970s
(Ref: BLD 13/4)



**Making Up Room at Chilprufe Manufacturing Co, Chilprufe Mills,
Leicester, 1924**

(Ref: BCH 5/1/1/26)

In the 1920s it was customary for women to give up work when they married, but the hosiery industry was so hungry for female workers that these social niceties were ignored.



Machine makers Wallis & Longden, Trent Works, Long Eaton, c.1945
(Ref: Wa X 4/2)

Wallis & Longden Ltd manufactured Levers lace machines, with a foundry built in 1910.

Newspaper cutting from *The Herald*, 1928
(Ref: Mrl ACC 2772)

Advertisement for Thomas Adams Ltd from *The Journal of the Nottingham Chamber of Commerce*, Vol. 1, 1918

(Ref: Records of the Nottingham Chamber of Commerce, MS 185)
Thomas Adams had magnificent warehouse premises in the Lace Market designed for him by TC Hine, which included a chapel for his workers.



• STONEY STREET, NOTTINGHAM •

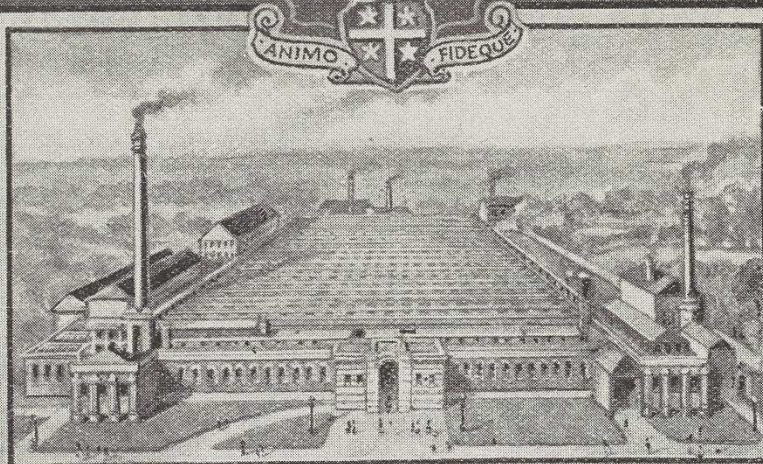
THOMAS ADAMS LTD

NOTTINGHAM
: ENGLAND :

LONDON, PARIS, CALAIS,
ST. GALL AND NEW YORK

MANUFACTURERS AND MERCHANTS
OF ALL CLASSES OF FANCY LACES
LACE CURTAINS, PLAIN AND FANCY NETS
LADIES' MADE UP GOODS

TRADE MARK.



FACTORY - BLEACHING, DYEING, AND FINISHING WORKS,
SHERWOOD HILL WORKS



"THE BULLETIN" 6th July, 1932

If men walked abroad in their undies

—it would still be easy to pick out the smart, "dressy" types. The eye would irresistibly be drawn to the IRMA garments, products of I. & R. Morley.

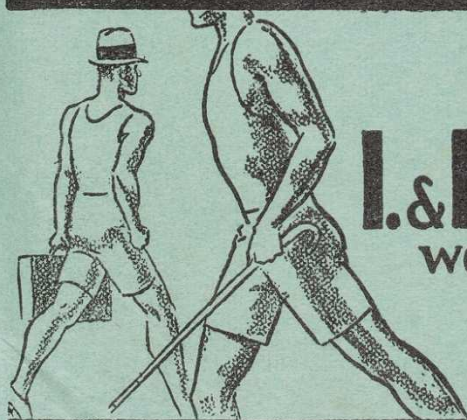
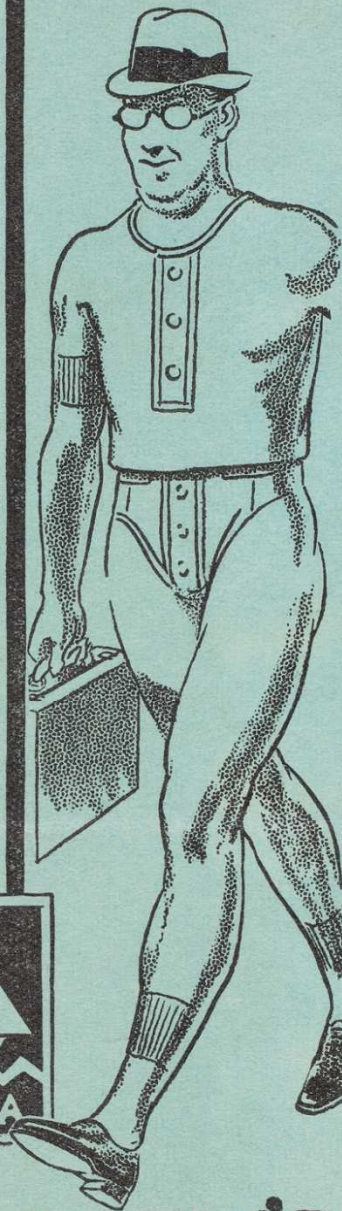
More than 140 years' progressive experience in manufacturing have built up a world-wide reputation for these British garments—now made in Australia. There are styles, weights and qualities for every taste—Union Suits, Trunk Drawers, Athletic Vests—long sleeves, half-sleeves, sleeveless, and so on.

Let your outfitter show you a range in pure wool, wool and silk, wool and cotton, silk and cotton, cotton, and art-silk Examine the quality, weave, workmanship and finish. Then for *lasting economy* you will decide on IRMA.

AT ALL HIGH-CLASS STORES.

Factory Representatives for I. and R. Morley Pty., Ltd.

GOLLIN & COMPANY PTY., LTD.,
Brisbane, Melbourne, Adelaide and Perth (for
Queensland, Vic., S.A., W.A. and Tas.).
C. J. SPAROWE,
250 Pitt Street, Sydney (for N.S.W.).



I.&R. MORLEY'S

WORLD FAMOUS UNDERWEAR

English Quality-Australian Made

There are full ranges of IRMA
Underwear for women also.

STOCKED AND RECOMMENDED BY —

Advert for Princess fully fashioned silk hose, 1914
(Ref: BBE ACC 1532)

[No need to print this one I'll use the PV invite]:

THE "PRINCESS."

SHOT 1/1 RIBBED

SILK HOSE.

LISLE GARTER TOPS & FEET.

Fully Fashioned.

TRADE  MARK.

BLACK GROUNDS,
Assorted White, Sky Blue, Royal
Blue, Cardinal, Emerald Green,
Orange, Lilac, Violet.

9 inch. 9½ inch. 10 inch.

72/- 72/- 72/-

