

The Changing Face of East Midlands Lace Manufacturing

The University of Nottingham collects archival material relating to the East Midlands including from local businesses. Over three million items are stored at Kings Meadow Campus. This display showcases a selection of items from collections recording the history of lace manufacturing in the East Midlands.

For more information on any of the items in the display or to arrange a visit to the Reading Room at Kings Meadow Campus see the information at www.nottingham.ac.uk/mss or email mss-library@nottingham.ac.uk.



Photograph of a lace workshop on New Tythe Street in Long Eaton, Derbyshire, c.1962

The lace industry began in Long Eaton in the 1830s. This small factory, dating from c.1850, would have housed hand-operated machines. It represents the type of premises in which the lace industry originated in Long Eaton before the building of the large tenement factories. (Courtesy Dr David M. Smith, MS 627/1/2/91)



Photograph of Fletcher's Factory, New Tythe Street, Long Eaton, Derbyshire, c.1962

Long Eaton grew rapidly in the second half of the nineteenth century. Built c.1870, this was the first of the large multi-storey lace factories. On the left is the Erewash Valley railway line.
(Courtesy Dr David M. Smith, MS 627/1/2/92)



Photograph of Harrington Mills, Long Eaton, Derbyshire, c.1962

Harrington Mills, built in 1888, was the longest of the tenement lace factories at over 1200 ft.
(Courtesy Dr David M. Smith, MS 627/1/2/95)



Photograph of Orchard's Factory, Bank Street, Long Eaton, Derbyshire

A large tenement lace factory, built c.1890, near the centre of Long Eaton. The continuous row of windows beneath the roof is a characteristic feature of many of the lace factories and warehouses of the Nottingham district.

(Courtesy Dr David M. Smith, MS 627/1/2/94)

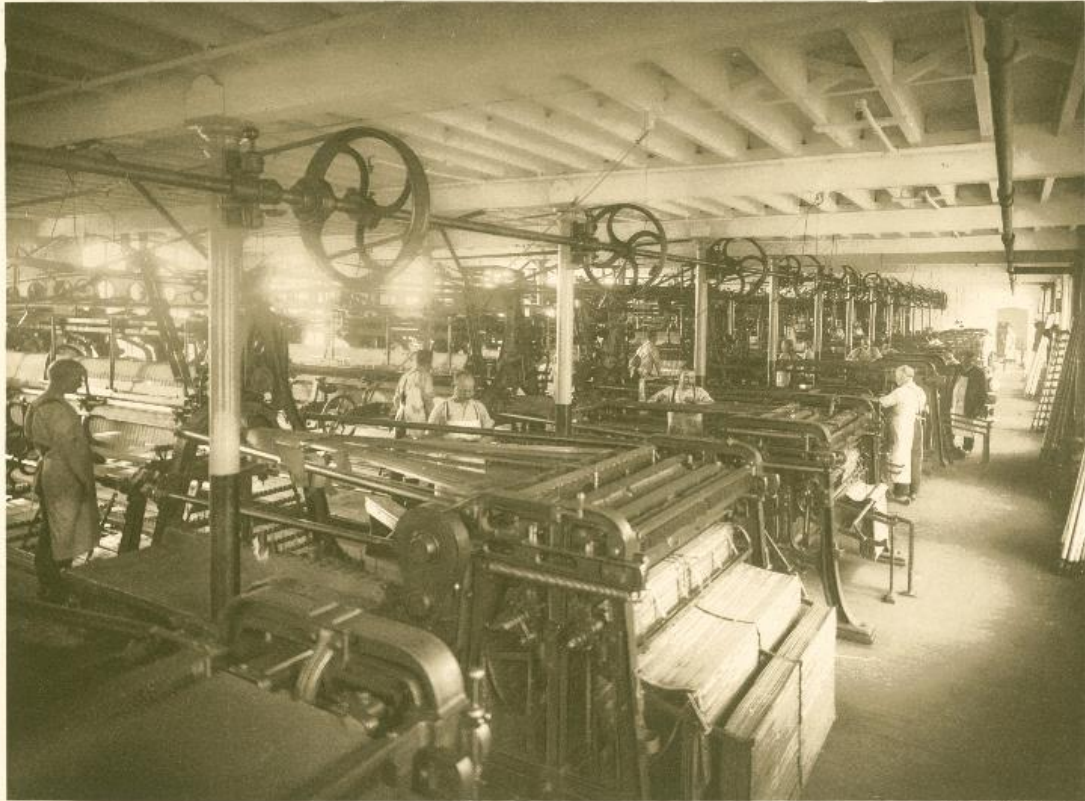


Photograph of Alexander mill, Gibb Street, Long Eaton, Derbyshire

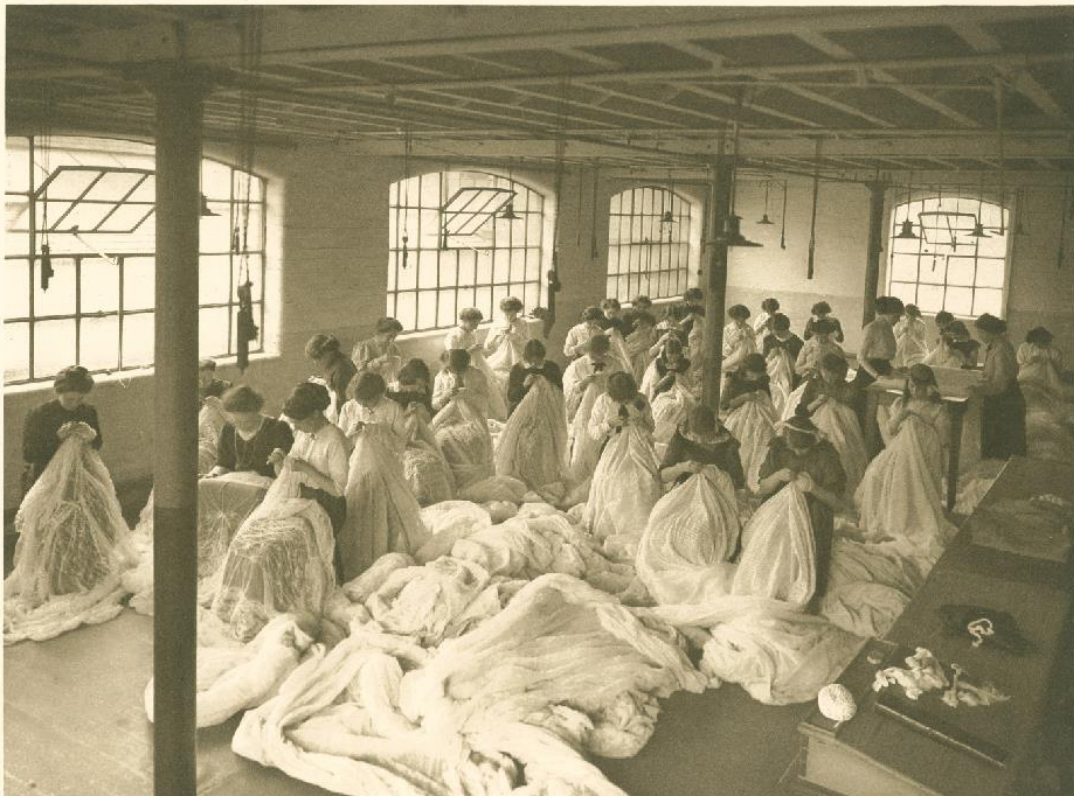
The lace industry in Long Eaton collapsed immediately after the First World War. Only a few small factories continued production. This single storey building, constructed c.1950, was the only factory to have been built after 1918.

(Courtesy Dr David M. Smith, MS 627/1/2/98)

The following images are photographs of lace manufacture at Birkin's lace factory in Basford, Nottingham, taken from a publication entitled '**Visit of Their Majesties King George V and Queen Mary to the works of Birkin & Company Nottingham on Wednesday June 14th 1914**' (EMSC Not 3.032 BIR os)



Lover's Lace Machine Room.

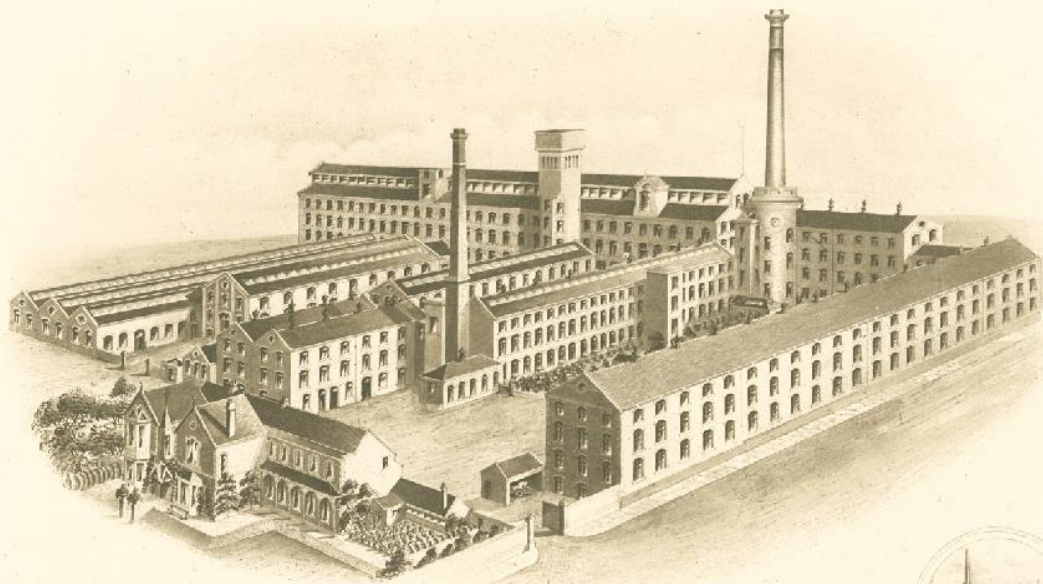


Mending Room.



WATERLOW & HEN & LAYTON

Curtain Designing



*Present view of the Laco. Factories of
Birkin & Co. New Basford, Nottingham.*