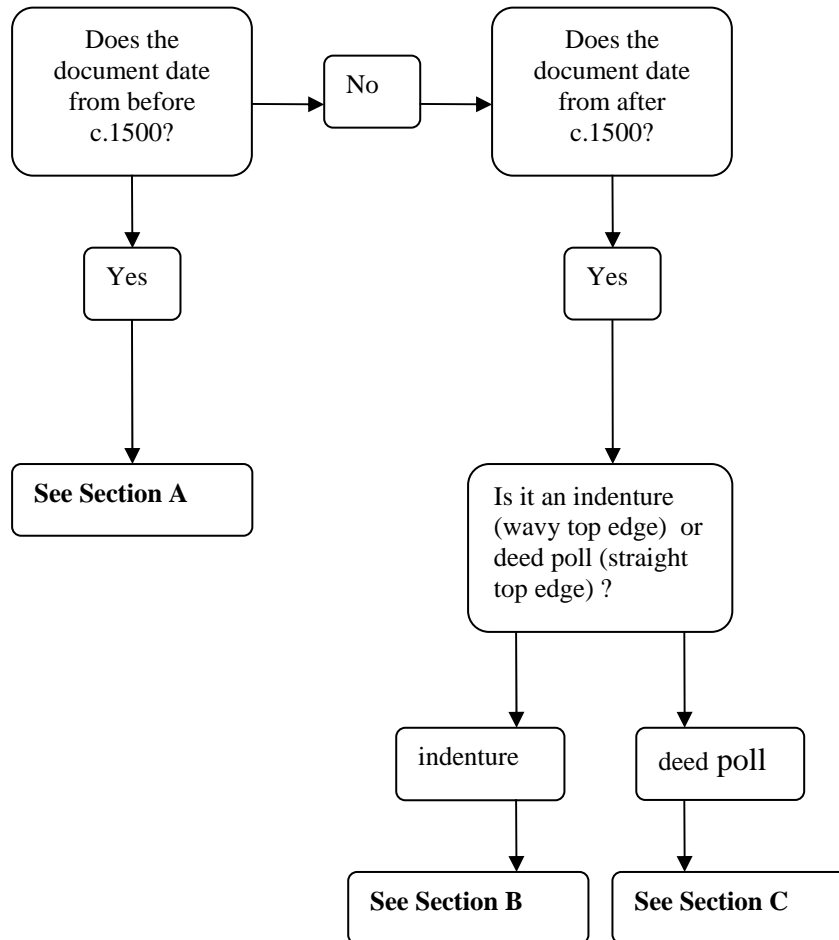
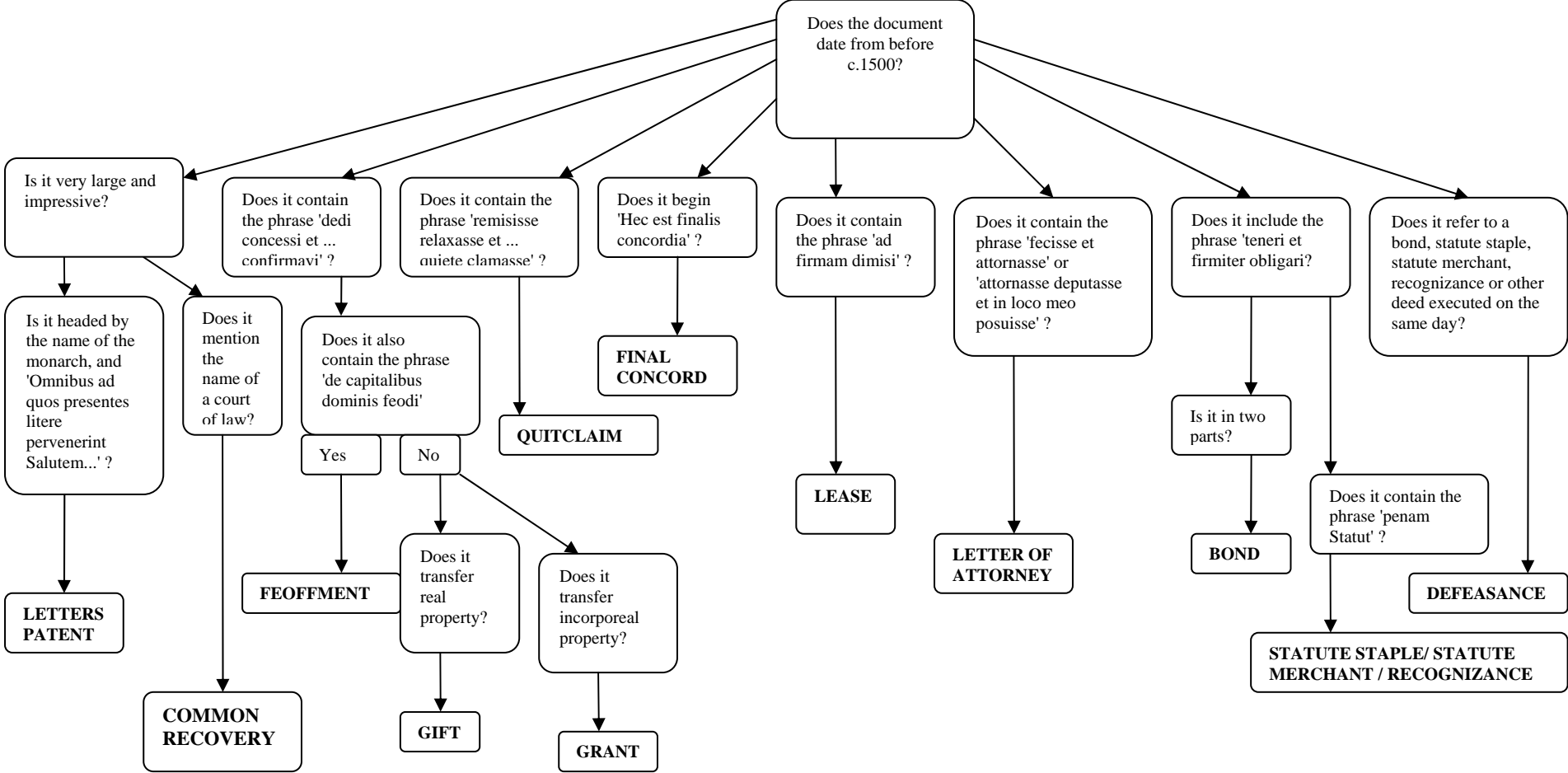


WHAT IS IT?

Flowchart to help in identifying deed forms



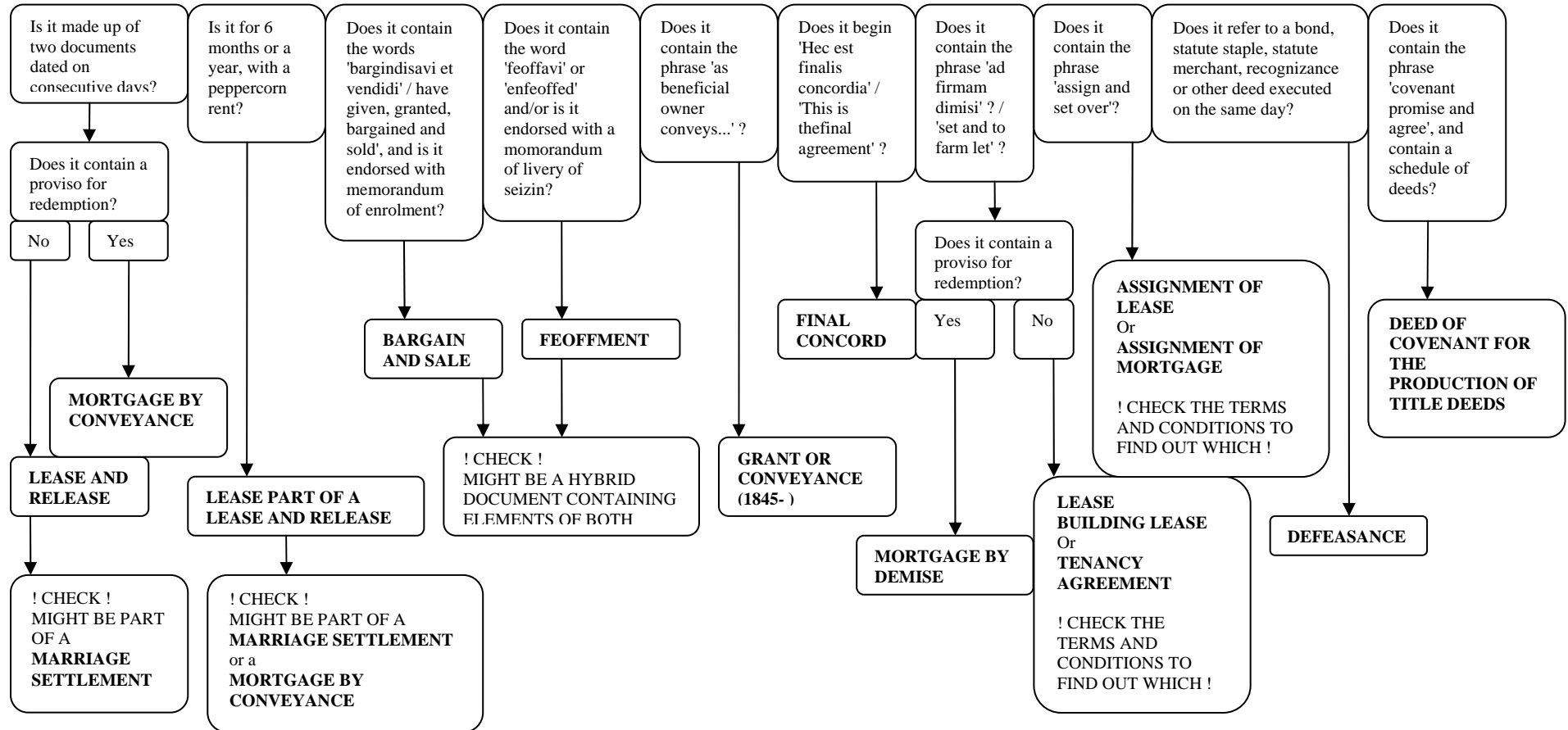
SECTION A
 Deeds dated up to around 1500
 n.b. some of these deed forms continued into the 16th and 17th centuries and beyond
 This table assumes the deeds are in Latin. Most deeds were in Latin until c.1500 and many continued in Latin until 1733



SECTION B

Deeds dated from after around 1500

n.b. most of these deed forms developed after 1536. However, some deeds of the 16th and 17th centuries retained medieval forms, for which see Section A
This table gives wordings in Latin and English. Many deeds were in Latin until 1733



SECTION C

Deeds and related documents, dated from after around 1500
n.b. most of these deed forms are continuations of medieval forms, for which see Section A
This table gives wordings in Latin and English. Many deeds were in Latin until 1733

