

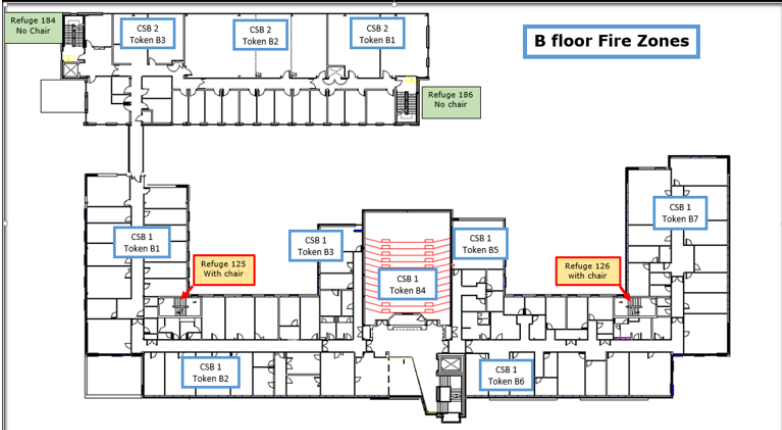
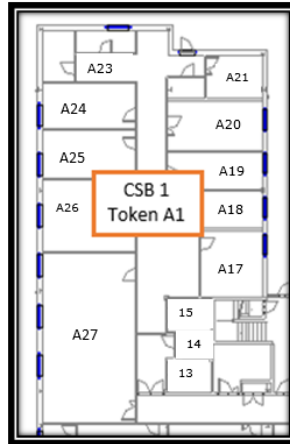


## Fire Procedure in the Clinical Sciences Building

<p><b>Fire Alarm</b></p>	<p style="text-align: center;"><b>Is a continuous siren</b></p>	<p style="text-align: center;">Is tested on <b>Monday</b> mornings</p>
<p><b>Raising the Alarm</b></p>	<p>Smoke &amp; Heat detectors automatically trigger the fire alarm.</p> <p>If you locate a fire or smell smoke you must raise the alarm by breaking the glass of the nearest fire alarm call point</p>	<p style="text-align: center;"><b>Break Glass</b></p> <div style="text-align: center;">  </div>
<p><b>Passing on the Information</b></p>	<p>Exact details of the fire <b>MUST</b> be reported to University security, giving details of the location and nature of the fire.</p> <p>This is very important if a false alarm has been triggered</p>	<p style="text-align: center;"><b>Dial 8888</b> <b>Mobile 01159518888</b></p> <div style="text-align: center;">  </div>
<p><b>Hearing the Alarm</b></p> <p><b>Token System</b></p> <p>Fire tokens are located in each fire zone, (between fire doors), a plan showing details of each floor is located next to each fire token, along with a building plan in the main entrance of CSB 1.</p>	<p>Pick up the fire token &amp; check the areas listed on the token map.</p> <p>Take the token to the Safety Officer (high visibility jacket) at the evacuation point.</p>	<div style="text-align: right;"> <p><b>B floor Fire Zones</b></p> </div> 

**CSB 1 - Token A1**



**Evacuation Procedure**

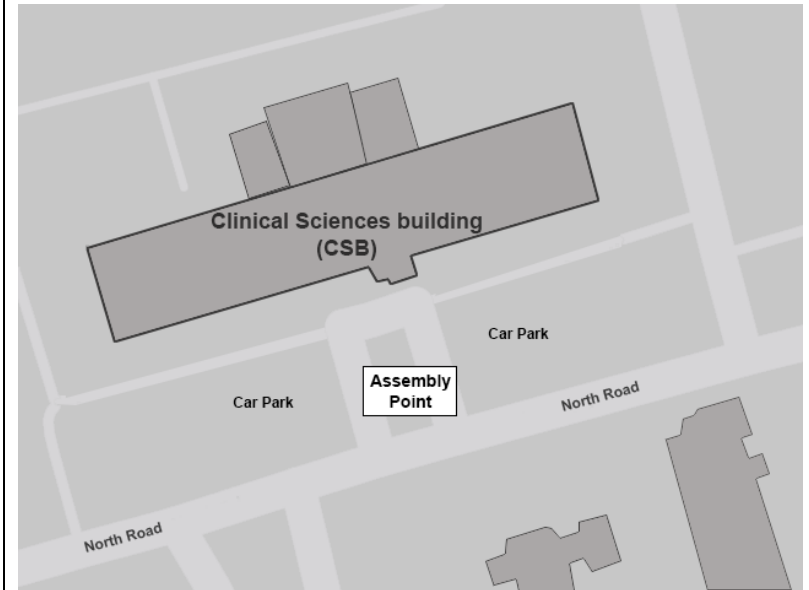


Evacuate the building by the nearest exit, closing all doors behind you.

Do NOT use the lifts or stop to collect personal belongings.

Proceed to the assembly point located at the front of the building

The designated Fire Officer or Emergency Services Coordinator will instruct you when it is safe to re enter the building.



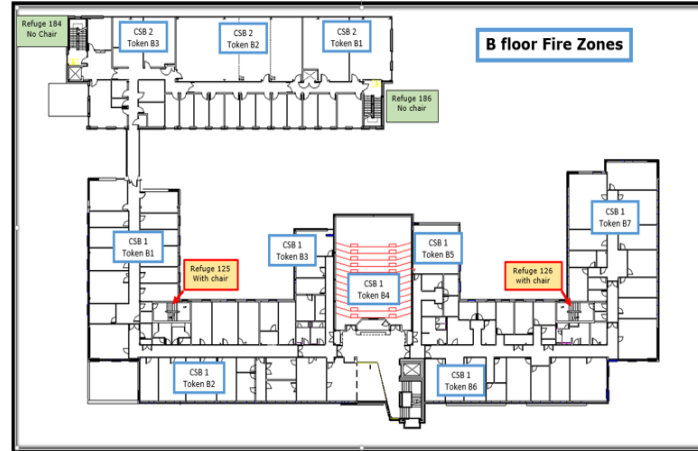
## Refuge Areas

### For individuals requiring assistance

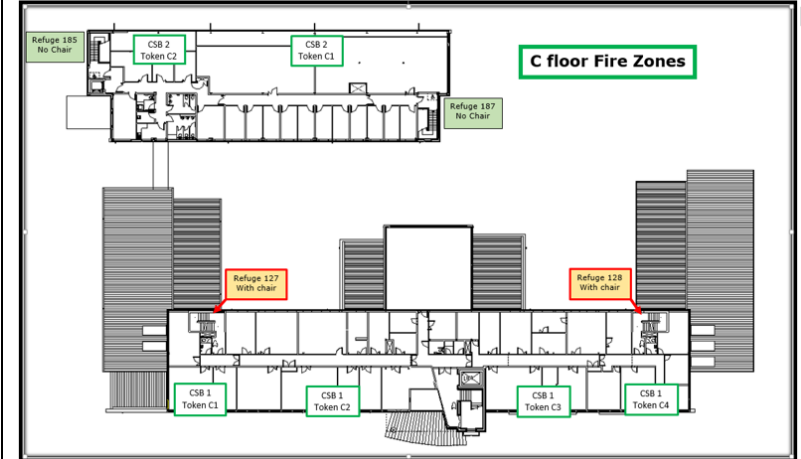


Green refuges do not have an evacuation chair  
Yellow refuges have an evacuation chair

If you are unable to leave the building using the stairs there is a refuge area on each floor, in the central core area either next the lift or on the opposite side depending on the floor.



You should use the phone to contact the university security and request assistance, you will need to tell them which refuge point you are at.



## Fire Fighting

**If in doubt get out!**

Only tackle the fire if it is safe to do so,  
and you have been trained

