





Fire Procedure for Translational Oncology – South Entrance – City Hospital

Fire Alarm	Intermittent Continuous	Single tone Two Tone	Is tested on Thursday mornings
Raising the Alarm	<p>Smoke & Heat detectors automatically trigger the fire alarm.</p> <p>If you locate a fire or smell smoke you must raise the alarm by breaking the glass of the nearest fire alarm call point</p>		<h2 style="margin: 0;">Break Glass</h2> 
Passing on Information	<p>Exact details of the fire MUST be reported to the QMC Switchboard, giving details of the location and nature of the fire/fire alarm.</p> <p>This is very important whether a false alarm has been triggered or a smell of smoke/fire is present. It ensures an accurate Trust and Fire Service attendance</p>		<h2 style="margin: 0;">Dial 2222</h2> 
Hearing the Alarm	<p>The fire alarm is a two-stage system that will give a two warning systems and a precise location on the fire panel.</p> <p>The CHC fire team and individuals from each area will check the fire panels located in each zone. These are 32/64 character fixed displays</p> <p>Intermittent – Single Tone – Full alarm in a neighbouring zone. Stay where you are and monitor the situation and follow the advice of the Trust Fire Response Team</p> <p>Continuous – Two Tone – Alarm triggered in your zone, await instruction from fire warden or if fire detected follow evacuation procedure.</p>		<div style="display: flex; justify-content: space-around;">   </div>

Evacuation Procedure



Evacuate the building by the nearest exit, closing all doors and windows behind you.

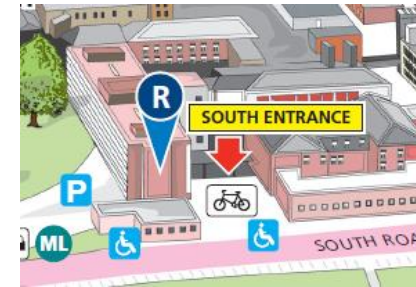
Do NOT use the lifts or stop to collect personal belongings.

Proceed to the assembly point located in the main lift lobby, unless you are directed to leave the building by the emergency services, then you should assemble in the car park at the South Entrance on the lower ground floor.

If you are unable to use the stairs, horizontal evacuation into sub compartments of the corridor allows you access to the 60 minute lift lobby refuges, the lifts are available to the fire services allowing vertical evacuation, (You must not travel in the lift without the permission of the fire service / team).

There is also horizontal evacuation to Giles ward / Oncology Day case, where vertical evacuation is also available.

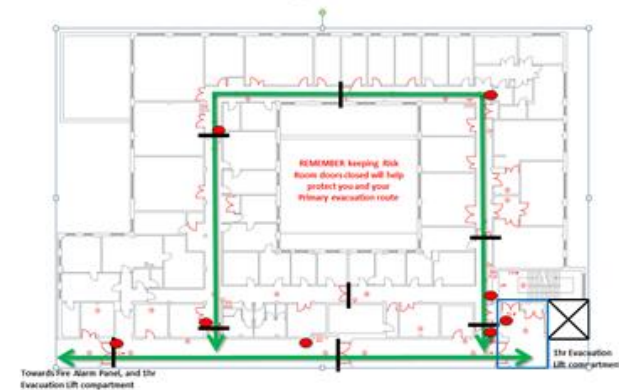
The designated Fire Officer or Emergency Services Coordinator will instruct you when it is safe to re-entire the building.



Evacuation Considerations

Transitional Oncology – 1st Floor South Corridor

Show only the tab name ribbon.



Fire Fighting

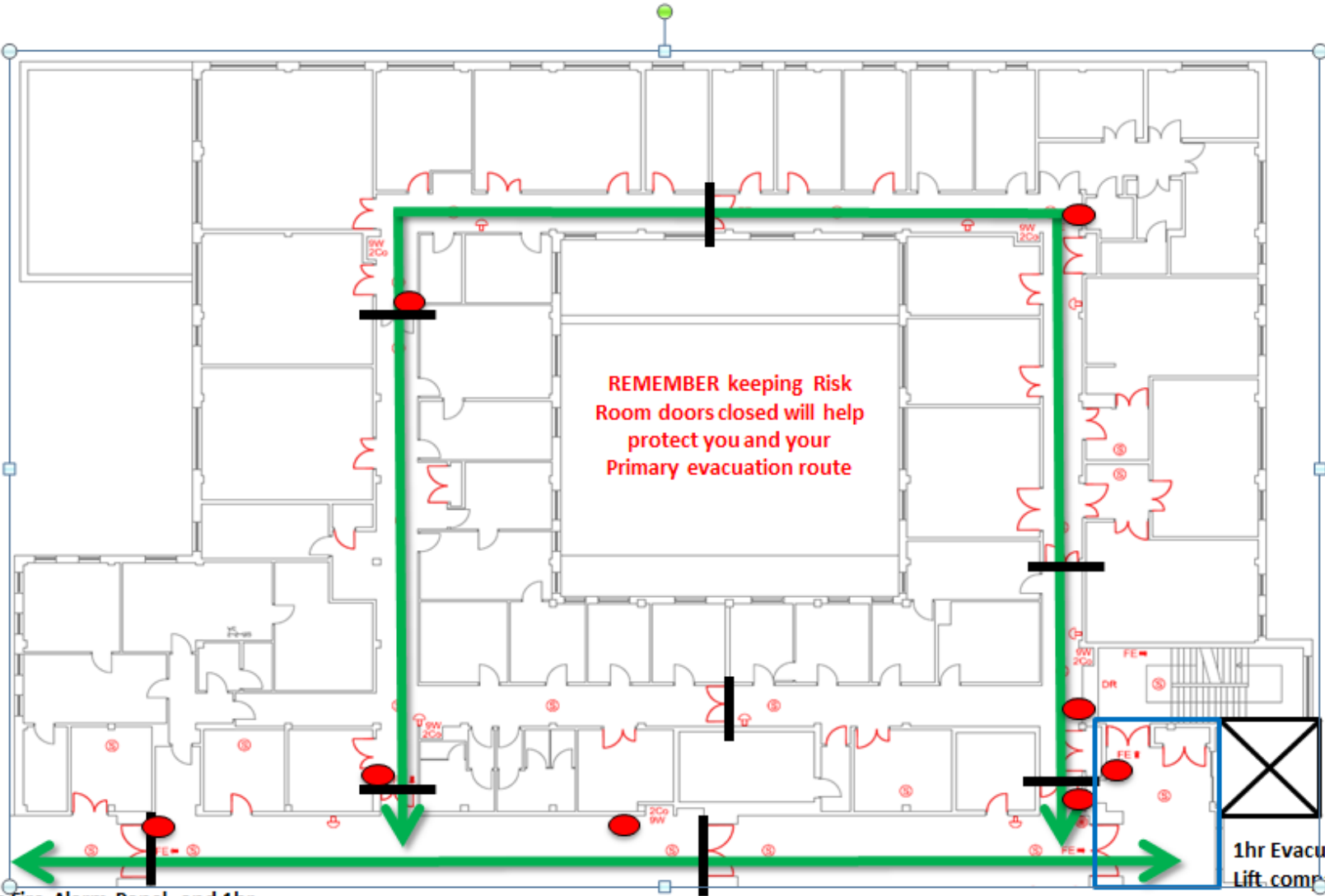
Only tackle the fire if it is safe to do so, and you have been trained



Evacuation Considerations

Transitional Oncology – 1st Floor South Corridor

Show only the tab name
Ribbon.



REMEMBER keeping Risk Room doors closed will help protect you and your Primary evacuation route

Towards Fire Alarm Panel, and 1hr Evacuation Lift compartment

1hr Evacuation Lift compartment