

Lead teacher guide: primary cohort 2025-26

Table of Contents

1. Introduction	2
2. Study overview	3
2.1 Purpose	3
2.2 Aims	3
3. Cycle two: September 2025 – July 2026	5
3.1 Cycle two overview (Year 1 pupils and teachers)	5
3.2 Cycle two planner 2025-26	7
3.3 Administering the pupil surveys	8
4. Information and support	9
4.1 Our contact details	9

1. Introduction

Welcome to the second year of the Observatory's longitudinal cohort study. We are delighted to be working with your school again for this ground-breaking research project.

This guide has been created for the lead teacher at our research partner primary schools. The lead teacher is responsible for coordinating the project from the research partner end.



“Welcome to cycle two of the primary cohort study. I hope you managed a good break over the summer. Here at the Observatory, we are delighted to be working with you again for the coming year.

There was a quite remarkable response from partner schools last year. Over 50,000 surveys were completed by learners, teachers and parents/guardians in primary schools, secondary schools and sixth form colleges across England. Our team have been analysing the responses from your school along with the other research partners and have gained new insights into mathematics learning and teaching. The headlines will be published in the Review of Mathematical Education 2025 in November, and we are meeting with the Department for Education in late September to share the emerging results.

Whilst last year was an amazing effort by everyone who took part, the real value of the research is in tracking changes over time. This means that it is crucial to the study for children and teachers to complete surveys again this year, and I very much appreciate your support in helping us to secure as many responses as possible. We could not do this important work without you, so I would like to offer you my thanks for your continued and invaluable support.”

Dr Catherine Gripton, Associate Director (Cohort Studies) for the Observatory for Mathematical Education and Associate Professor at the University of Nottingham

In this guide, you will find:

- An overview of the study, its purpose and aims.
- A summary and breakdown of activities in the second year of the study.
- The responsibilities of the research partner school.
- Contact details for the Observatory team.

We recommend you read through this document at the start of the year

There are a couple of changes to the research activities this year, so we encourage you to read through everything - even if you were the lead teacher last year - and then refer to key sections as needed.

Note: It can be confusing to talk about which year group the children are in and how this relates to which year of the study we are in. Therefore, to keep things simple, from now on we will refer to years of the study as “cycles” and year groups as “Years”. For example: In cycle two of the study, we will be surveying pupils in Year 1.

2. Study overview

The Observatory is following three cohorts of pupils in schools and colleges across England. The pupils in these cohorts are largely the same as those that were surveyed last cycle.

- Primary cohort: starting with pupils in Reception, this cohort will be followed until the end of Year 6. This cycle, the cohort is in Year 1.
- Secondary cohort: starting with students in Year 7, this cohort will be followed until the end of Year 11 or Year 13. This year, the cohort is in Year 8.
- A-level cohort: starting with students in Year 12, this is the final year for this cohort study. This cycle, the cohort is in Year 13.

The cohort studies form the largest ever longitudinal study of mathematics education in England. Over 7 years, the Observatory will build a picture of maths education in England through detailed exploration in key areas of interest, including thorough review of pupil attainment, attitudes, progression and experiences.

2.1 Purpose

We all know the importance of mathematics education for children’s future lives and employment. Within the complexities of the education system in England, many factors contribute to a child’s mathematics education. The Observatory is taking a longitudinal, cohort approach, collecting data on attitudes and experiences from the same group of pupils over several years in a representative sample of schools across England. The data will be analysed to identify trends across different approaches, resources, school types and pupil groups over time.

We will build a picture of the maths education landscape from a range of viewpoints: students, teachers, subject leaders and parents/guardians.

2.2 Aims

There are two broad aims to this study:

1. To gain a comprehensive understanding of the current maths education landscape in England. This means seeking to understand patterns in children’s attainment, attitudes, experiences and progression in mathematics.

2. To identify how these patterns vary by region, school and classroom; and for different groups of children (ethnicity, gender, SEND, language and socio-economic status). This will provide understanding of the impact of curriculum and teaching choices which will inform maths education policy and practice in the future.

3. Cycle two: September 2025 – July 2026

This section provides an overview and a detailed breakdown of the research activities in the second cycle of the study.

3.1 Cycle two overview (Year 1 pupils and teachers)

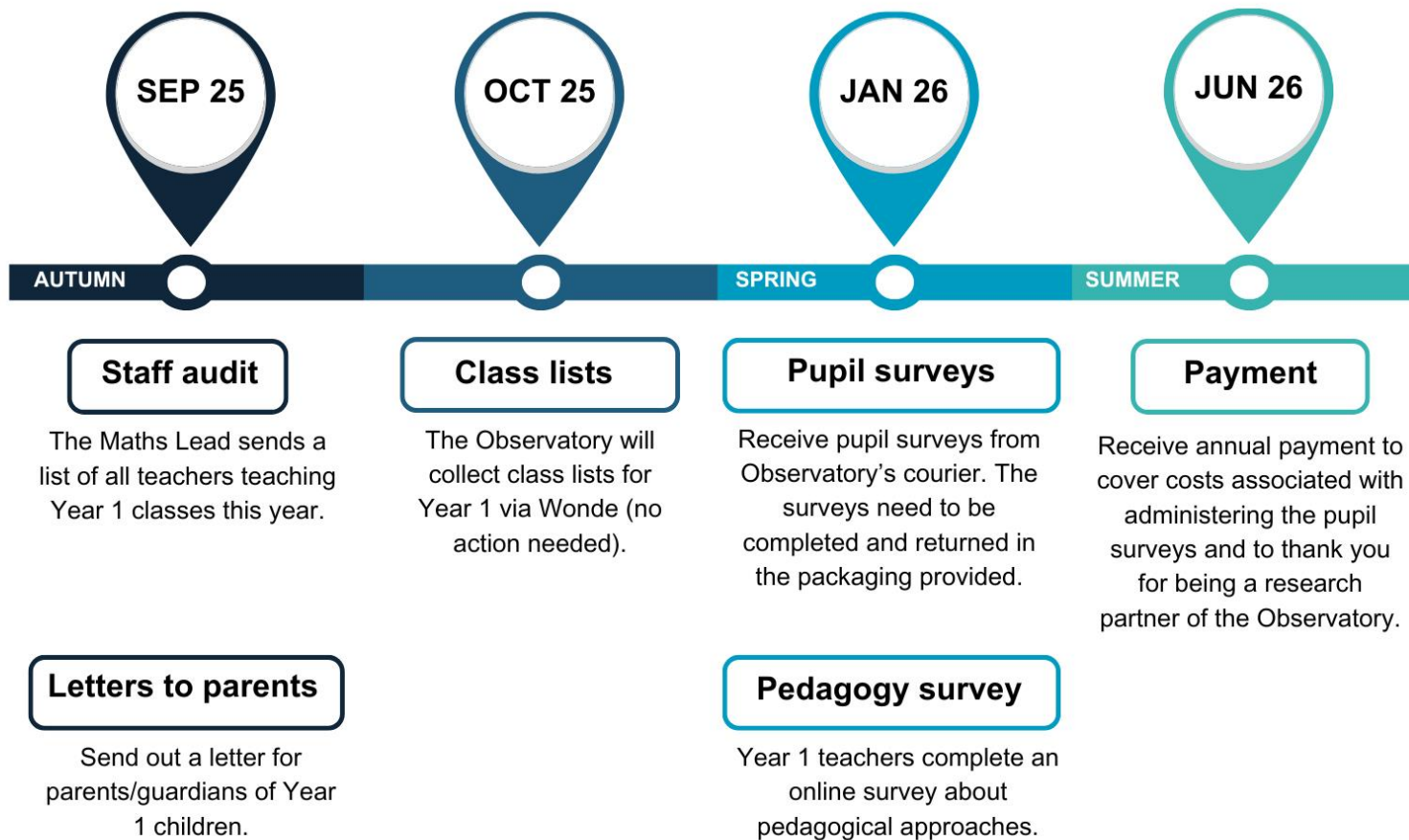
On the next page, you will find a timeline outlining the key research activities in cycle two (2025-26).

The key differences from cycle one (2024-25) are:

- The **staff audit** will **only** ask for details of **Year 1 teachers**.
- There will be **no teacher** survey if your school completed this last cycle.
- There will be **no parent/guardian survey** this cycle.
- There will be **no Maths Lead survey** this cycle if this was completed last cycle.

PRIMARY COHORT STUDY TIMELINE

Year 1, 2025-26



3.2 Cycle two planner 2025-26

Month	Activity	Who	What
September 2025	Letter to parent/guardian	Administrative contact	Send a letter from the Observatory to the parent/guardian of all Year 1 pupils. The letter includes information on withdrawing children from the study. The letter should be sent using your usual method. Send this letter promptly and let us know when you do so. We cannot collect class lists or print pupil surveys unless this is done.
September 2025	Staff audit	Lead teacher	We will email you an Excel spreadsheet template. Fill this in with the name, work email address and class name of all Year 1 teachers and share it with us by secure upload ¹ .
October 2025	Class list	Wonde administrator	Your school should be connected with the University of Nottingham on Wonde and will not need to take any action for us to collect the class list information ² . We will contact your Wonde administrator if we have any queries. Please contact us if you have any issues.
January 2026	Year 1 pupil surveys	Administrative contact, Teaching Assistant and Year 1 children	Your school will receive a package by courier containing the pupil surveys, instructions and return packaging. You have several weeks to complete the surveys. The administrative contact will arrange a collection date with us for the completed surveys.
January 2026	Year 1 teacher pedagogy survey	Year 1 teachers	We will email your Year 1 teachers a link to complete an online survey about the pedagogical approaches they use in their teaching. If you are a Year 1 teacher, you should also complete this.
June 2026	Incentive payment	Finance contact	Your school will receive a payment by bank transfer from the Observatory. This payment is to thank you for being a research partner and to cover the costs associated with completing the pupil surveys. We will ask your finance contact to confirm bank details before we make this payment.

¹ Instructions for how complete a secure upload will be provided.

² Pupil name, date of birth, unique pupil number, class name and teacher name. Your school has consented to this in a data sharing agreement.

3.3 Administering the pupil surveys

A teaching assistant (or other appropriate adult working in school) will need to help the children to complete the survey. There is no screening test to complete in cycle two. The pupil survey takes about 10 minutes per child to complete. Therefore, you should set aside an appropriate amount of time for all pupils to complete these.

Ideally, the adult will need a quiet space to complete the survey with each child. We understand that this can be challenging in a busy primary school, so do not worry if you cannot find a separate space. Just try to ensure that the child can hear the adult's instructions and that no other children are able to see the child's answers.

An instruction booklet on how to administer the pupil survey will be delivered with the survey papers in January. Digital copies and video support materials will also be made available on our website.

Our team will be on hand to help with any queries about completing the pupil surveys (see section [4. Information and support](#)).

4. Information and support

We appreciate you are busy people with many demands on your time. We want to make your participation in this research as easy as possible.

Here's what we will do to help you:

- ✓ Provide as much notice as possible for when to expect research activities.
- ✓ Make our email subjects clear and indicate when you need to action something.
- ✓ Keep emails brief and instructions clear.
- ✓ Make copies of documents and information available on our website, where possible.
- ✓ Respond to your emails as quickly as possible.
- ✓ Have our phone lines open Monday-Friday, 8.30am-4.30pm. (If we are out of the office, we will respond to answer phone requests as quickly as possible.)

To make your participation straightforward, we ask you to help us by:

- ✓ Reading emails from us carefully.
- ✓ Completing the actions we request (or letting us know who else to speak to).
- ✓ Asking for clarification if something is not clear.
- ✓ Contacting us if you are concerned about meeting a deadline (with as much notice as possible).
- ✓ Contacting us if you have any concerns about your involvement with the research.

4.1 Our contact details

You can send us an email at any time, and we will aim to reply in 1 working day.

You can call to speak to someone in the office Monday-Friday, 8.30am-4.30pm.

Email: mathsobservatory@nottingham.ac.uk

Telephone: 0115 95 14426

Please do not hesitate to get in touch with any questions – our team are always happy to help.