

PRIMIS

Making clinical data work



University of
Nottingham

UK | CHINA | MALAYSIA

d l d e 8 s a o 9 n t 9 e e l 8 1 v e
j p 8 a f n n l a 9 n v 3 a j 7 s z 9
m a k i n g a 7 2 f 3 h o 9 t d e 5 1
6 f 8 s c l i n i c a l 9 t 4 d a t a
d l 7 5 n c i 6 s b q 9 w o r k h e 8
7 9 d l a o x 4 1 p 5 j 7 f 5 f q z 9

A year in review 2024

Forewords

PRIMIS is thriving. The field of healthcare informatics is constantly changing, so PRIMIS has had to continually evolve. We started as the hub for a network of facilitators who trained GP practices in the use of electronic patient records and supported them in clinical audit. Our skills in using clinical codes and writing reliable queries for the health service gave us the second phase in our life. In addition to our NHS commissions, we are now increasingly working with researchers to help them extract the data they need and with charities and commercial companies to implement algorithms to support patient care.

Partnerships are central to our way of working, be they with the NHS, UKHSA, researchers or industry, but we maintain our vision to support high quality patient care through the effective use of routine clinical data, and to do so safely and ethically.

We are particularly proud of our role within the University of Nottingham within which we operate: with its support we will continue to thrive.

Professor Mike Pringle CBE, Chair of the PRIMIS Board

PRIMIS stands as a beacon of innovation and excellence in primary care data services. The team is composed of highly skilled professionals who are passionate about improving healthcare through data. We are dedicated to maintaining the highest standards of excellence in everything we do.

During 2024, we have played an increasingly visible role in helping to bridge the gap between research and real-world practice. By providing the necessary data, expertise, and collaboration we're helping to ensure that research findings are effectively applied in real-world settings.

We look forward to continuing this vital work and exploring new opportunities for bigger and better data-driven healthcare improvements in 2025 and to celebrating our 25th year.

Kerry Oliver, PRIMIS Managing Director

“” Working with PRIMIS is a real pleasure. In addition to the production of outputs of consistently high quality, I very much appreciate the ready access to in-depth and insightful knowledge of coding and terminology that supports the work of UK Health Security Agency (UKHSA).

*Dr Colin Campbell, Consultant Medical Epidemiologist,
Immunisation & Vaccine-Preventable Diseases Division, UKHSA*

“” It has been a pleasure working with PRIMIS. The team's high level of expertise and professionalism has allowed us to design and implement complex searches of primary care records for our trial, in a way that would not have been possible using our usual approaches. The team has always delivered on time, producing detailed work with careful audit trails and are always quick to respond to our queries, as well as those from our GP sites. I hope to be able to work with them on many other trials in the future!

*Prof James Sheppard, Professor of Applied Health Data Science, NIHR Advanced Fellow,
Research Associate of Green Templeton College, Nuffield Department of Primary Care Health
Sciences, the University of Oxford*

Introducing PRIMIS

We are a nationally recognised centre of excellence in the field of health informatics, contributing to NHS policy and strategic direction on the use of primary care data.

Through our collaborations and shared learning with academia, healthcare, industry and charities for nearly 25 years, we have amassed an unrivalled local, national and global reach and reputation.

Our mission

Our mission is to improve patient care, safety, and outcomes through the intelligent use of healthcare data and be a highly valued asset to the University of Nottingham.

Our vision

Our vision is that all healthcare planning, patient interactions and research are enhanced from the better use of healthcare data.

Our values

technical mastery,
quality, honesty and
integrity

creativity, innovation,
and curiosity

learning, sharing and
collaboration

value and impact

PRIMIS is proud to be part of the School of Medicine and the growing health informatics community within the University of Nottingham.

The University has a long pioneering and entrepreneurial tradition of creativity and innovation and is committed to solving problems and improving lives, all of which is intrinsic to the culture of PRIMIS and drives and underpins the projects that we undertake.

PRIMIS aligns with the University's vision and strategic goals by:

- working closely with NHS organisations, general practitioners, public health bodies and commercial players, creating strong, mutually beneficial partnerships that align with the university's collaborative ethos
- developing tools, resources, and services that enable data-driven healthcare improvements that address real-world challenges
- supporting clinical trials and real-world evidence generation using GP data, enhancing the University's research profile and contributing to advancements in healthcare informatics and evidence-based practices
- working with international partners and contributing to global health projects, showcasing the University's leadership and influence in addressing worldwide healthcare challenges
- enhancing educational opportunities in health data and patient safety

PRIMIS contributes to the University's REF (Research Excellence Framework) outputs by supporting the scale and spread of innovations and discoveries, and through our publications and partnerships.

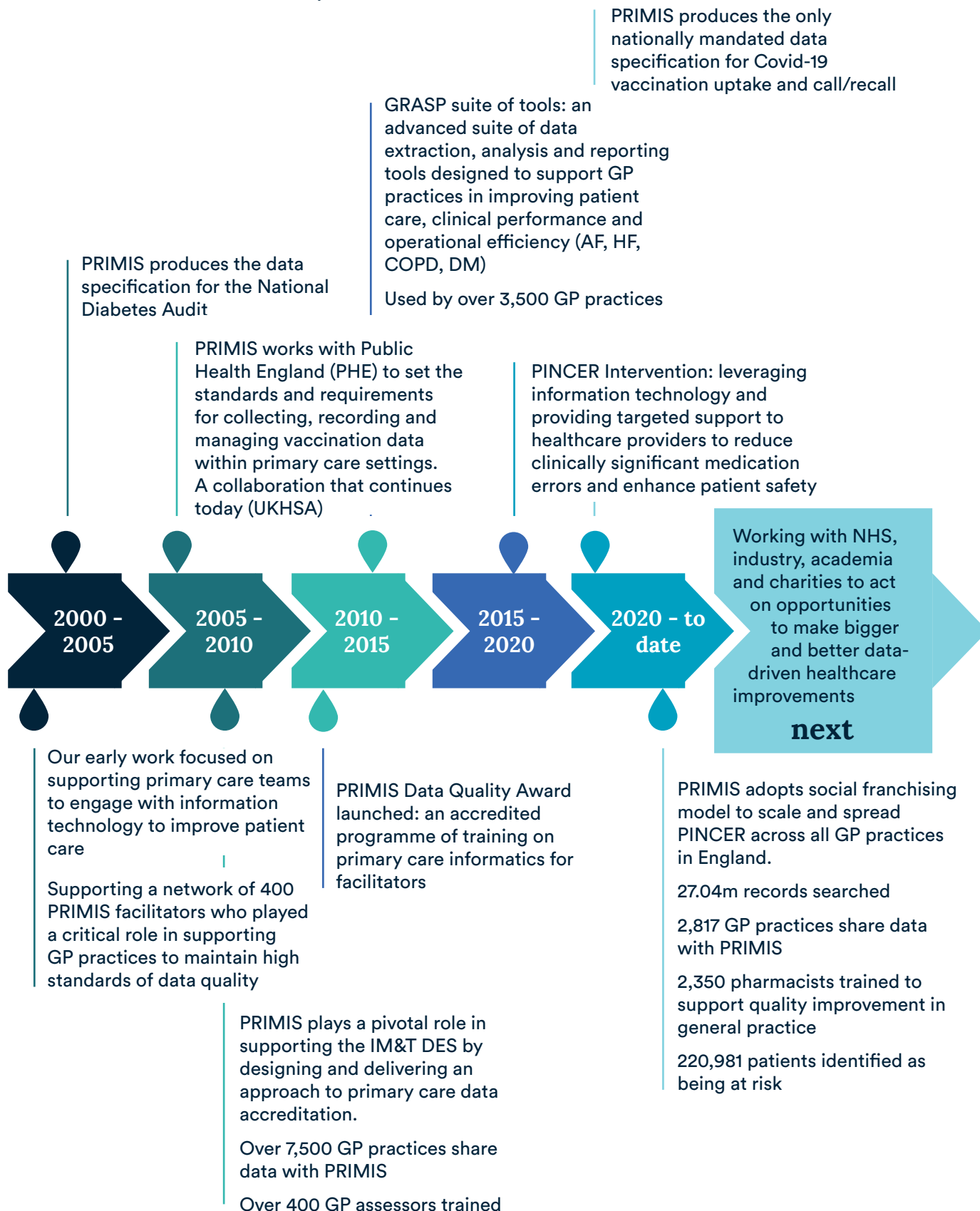
“ ” It's been yet another impressive year for PRIMIS. Great to see the enthusiasm that has seen our teams work more closely together - colleagues comprising IT professionals, data analysts, programmers, terminologists, and clinical experts coming together to strengthen health informatics expertise at the University of Nottingham.

Prof Phil Quinlan, Professor of Digital Engineering and Health Informatics, School of Medicine

A brief PRIMIS history

We are a highly regarded source of skilled and effective primary care health informatics support to academia, the health service, charities and industry in the UK. Our achievements are many and varied.

Read more on PRIMIS' rich history on our [website](#).



Widening the impact of University of Nottingham research overseas

We've been working alongside academics to assess the potential for the PINCER indicators to be implemented outside of the UK and look forward to working with our international partners during 2025 to address global health challenges such as medication safety as well as expanding our portfolio within the field of pharmacogenomics.



Supporting a standardised and transparent process for access to research data

PRIMIS experts are working with Nottingham University Hospitals NHS Trust to help plan FAIRdata4Research, a project that aims for healthcare data to be well-described, easily discoverable and ready for use for research purposes.



Building controlled and protected settings for analysing healthcare data

PRIMIS experts are supporting the delivery team for the East Midlands Secure Data Environment (EMSDE) tasked with providing a secure platform for access to healthcare data for research and innovation purposes.



Advising on the design and construction of digital rules and alerts

We have expanded our work with providers of decision support tools, helping them to create meaningful data-driven insights for their population health management and medicines optimisation solutions. Our experts work closely with our industry partners to understand the scope of their software and their customer requirements, with the aim of finding solutions that work for the end user in the clinical setting.



Enabling consistent recording, sharing, and analysis of medical data across the UK

PRIMIS experts are responsible for maintaining hundreds of SNOMED CT Refsets on behalf of NHS England and, unusually for us, this requires the management of code groups that are used outside of primary care settings.



We continue to work with the UKHSA and GP system suppliers on the national vaccination uptake programme, playing a pivotal role on the accurate reporting of vaccination data across eligible groups.

Cohort identification using complex algorithms

We've worked with researchers at the University of Oxford to implement complex algorithms in GP practices to enable the identification of potentially eligible patients for recruitment to the OPTIMISE2 trial. The trial aims to assess the long-term effects of stopping blood pressure lowering drugs among older people at higher risk of drug-related side effects.



Bridging the gap between research and real-world implementation

With funding from the University of Nottingham's MRC Impact Acceleration Account (MRC IAA) Award, we've worked alongside researchers at the University of Nottingham to convert a series of validated prognostic models designed to risk stratify the frequency of blood test monitoring for patients on immune suppressing drugs.



Helping to ensure medicines provide the most benefits to patients

This year saw the publication of the GRASP-Osteoporosis Rx Pilot Report, a project delivered with Health Innovation Oxford & Thames Valley resulting in clinically significant improvements in adherence to anti osteoporosis medication across GP practices in Oxford.



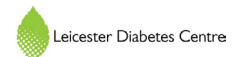
Solving the challenge of diabetes misclassification

We've worked with researchers from the University of Exeter to build the DePICtion analytical tool to help clinicians to improve the classification of diabetes in primary care. The research team are currently working with GP practices to test the analytical tool in their computer systems.



Development of an electronic decision-support system in GP practices to review patients at risk of overtreatment

We completed our work on the D-MED Research Study with our long-term collaborators, the Leicester Diabetes Centre. The aim of this study is to help clinicians in primary care reduce the proportion of potentially inappropriate diabetes medications prescribed in older people with type 2 diabetes and frailty.



Identifying high risk patients enabling earlier diagnosis and treatment

PRIMIS is leading on the implementation of the FAMCAT2 algorithm, developed by University of Nottingham academics to predict familial hypercholesterolaemia, an inherited condition which can lead to heart disease at a young age. We have been working with two early adopter sites exploring different strategies for implementing the algorithm. Results from both sites have demonstrated significant success, reinforcing confidence in the broader implementation of FAMCAT2 in real-world settings in the future.



Supporting innovation and improvement in heart failure services

PRIMIS is part of the 25in25 initiative with the British Society for Heart Failure, aiming to reduce heart failure deaths by 25% in 25 years. We've supported the development of quality indicators and reporting tools, which will be used next year by five pilot sites to inform and monitor their quality improvement activities.



Helping people working to improve health and care to connect, learn and share

We were delighted to host a QVisit on behalf of the Health Foundation's QCommunity. The event provided an opportunity for like-minded individuals, who have a similar kind of mission to improve health and care, to meet and discuss approaches to quality improvement. The invitation to host the event is testament to PRIMIS' long and successful history in supporting national quality improvement initiatives.



And finally... PRIMIS was recognised at the University of Nottingham's Knowledge Exchange and Impact Awards

The Awards raise the awareness of the exceptional work across the University of Nottingham and celebrate knowledge exchange projects that have had commercial, societal and/or policy impact. We were acknowledged for our work on the scale and spread of the Pincer medication safety intervention, and proudly represented the Faculty of Medicine and Health Sciences at the event.



“ ” The team at PRIMIS are very engaged and proactive and it has been an absolute pleasure working with them.

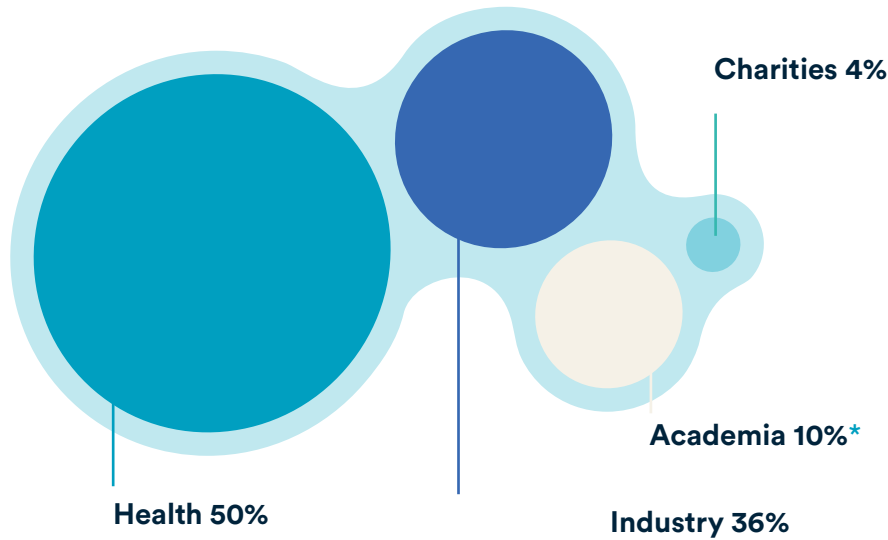
Prof Abisheik Abisheik, Professor of Rheumatology at the University of Nottingham

Finance

Strengthening the University's links with industry, healthcare, charities and academic research

Through a determined focus on securing repeat business through the creation of successful outcomes for our customers and partners, we have been able to achieve sustainable business success for nearly 25 years. Over 80% of our annual income comes from returning customers.*Our collaboration with academia means that in the past year PRIMIS has contributed to projects in excess of £36 million in research grants:

Percentage of yearly income by sector



Quality

ISO 9001 Quality Management certification demonstrates our unwavering commitment to delivering the highest quality products and services to our customers. ISO 9001 drives a culture of continuous improvement, empowering us to optimize our processes and innovate for the future.

PRIMIS has held ISO 9001 certification for over 18 years. With ISO 9001, we are fully dedicated to understanding and exceeding customer expectations.

Stakeholder and customer feedback is informing and improving the quality of the services that we provide. Visit our [online feedback form](#) to leave a comment.



We've been delighted to partner with PRIMIS on our 25in25 initiative. They bring their primary care and health informatics expertise to the pilot phase of the British Society for Heart Failure's 25in25 initiative paving the way for transformational change in the care of patients living with heart failure.

Jim Gardner, Interim Chief Executive, British Society for Heart Failure

Get in touch

Email PRIMIS

PRIMIS website

PRIMIS on X

PRIMIS on LinkedIn

PRIMIS

The University of Nottingham, Applied Health Research Building, University Park, Nottingham NG7 2RD