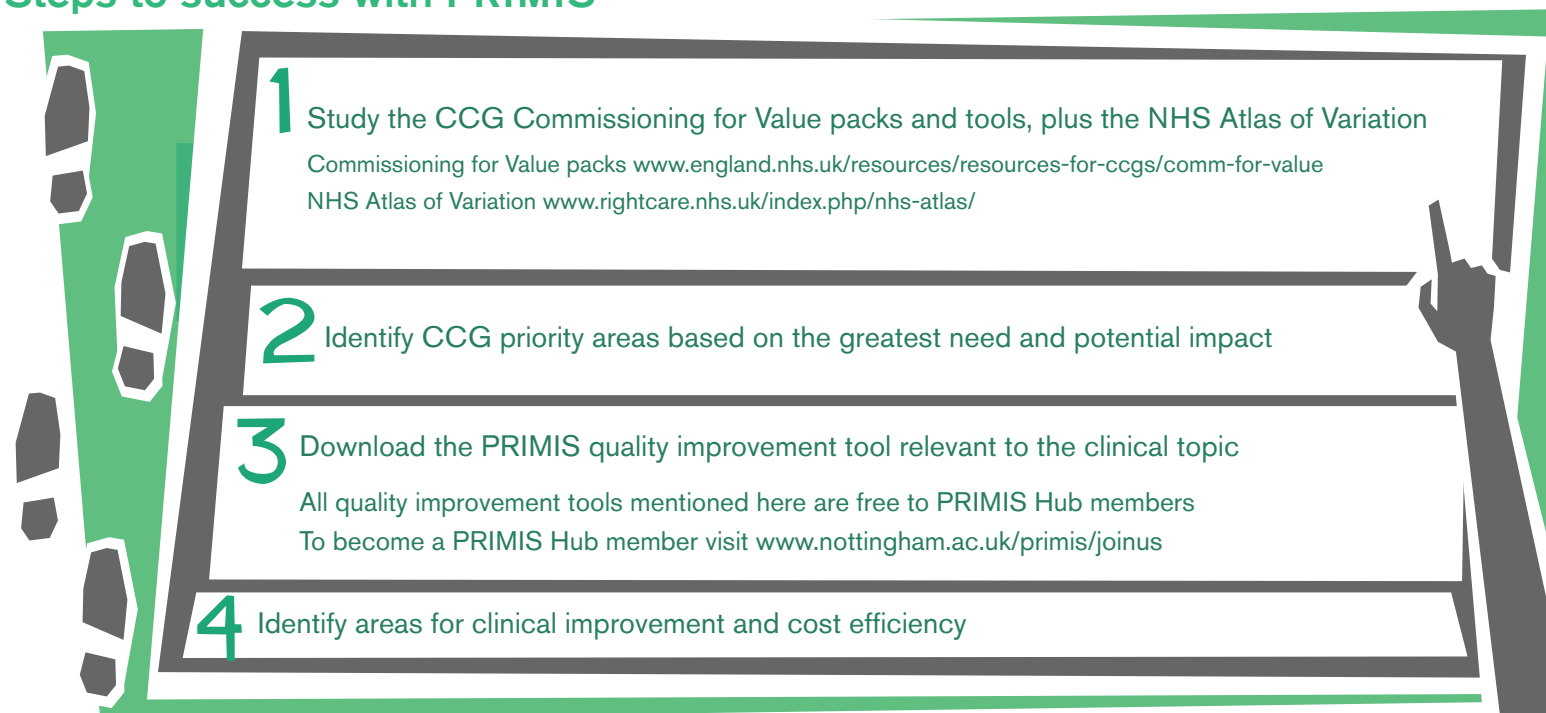


## PRIMIS quality improvement tools and the NHS RightCare programme



PRIMIS is proud to support the NHS RightCare programme currently being rolled out across Clinical Commissioning Groups (CCGs) in England. This document explains how PRIMIS' clinical tools and services can help to address RightCare indicators and support success in your practice.

### Steps to success with PRIMIS



NHS RightCare's ambition is to reduce unwarranted variation through relentlessly focusing on value in healthcare. It is a proven approach that has both improved outcomes and freed up funds for further innovation where it has been implemented on a pilot basis at local health economy level.

RightCare is being launched to all health economies in 2016 by NHS England by a team of Delivery Partners and dedicated national functions.

The RightCare approach is a key initiative to drive delivery of the Five Year Forward View\*

\* The Five Year Forward View (published October 2014, NHS England) set out a positive decision for the future, based around seven models of care.

[england.nhs.uk/ourwork/futurenhs](http://england.nhs.uk/ourwork/futurenhs)

#### Relevant PRIMIS tools include:

Asthma Care	GRASP-AF
Diabetes Care	GRASP-COPD
Warfarin Patient Safety	GRASP-HF

### Additional support

PRIMIS has a range of flexible solutions to support practices with quality improvement tool implementation:

#### Remote installation service

Via a secure, remote access to your GP practice system PRIMIS will install, set up CHART and run up to three audits. The results of the audits will be saved for you to analyse in your own time.

[nottingham.ac.uk/primis/criss](mailto:enquiries@primis.nottingham.ac.uk)

#### Webinar following a remote installation

After a quality improvement tool has been run, PRIMIS staff will use an online webinar to guide you through the results, explain how to analyse them and suggest priority lists of patients for review.

Please email: [enquiries@primis.nottingham.ac.uk](mailto:enquiries@primis.nottingham.ac.uk)

#### Practice visit

You will be shown how to install and use CHART and use quality improvement tools to generate reports. The visit will ensure you understand the significance of the results and can produce lists of patients for review.

Please email: [enquiries@primis.nottingham.ac.uk](mailto:enquiries@primis.nottingham.ac.uk)

#### Scheduled training services

PRIMIS has a suite of training workshops of benefit to practice staff, on topics including MIQUEST query writing, QOF, notes summarising, medical terminology and quality coding.

[nottingham.ac.uk/primis/workshops](http://nottingham.ac.uk/primis/workshops)

# NHS RightCare opportunity, spend and mortality indicators and clinical pathways addressed by PRIMIS quality improvement tools

## Asthma Care and case finder

- 1.6 Problems of Respiratory System
  - % of asthma patients who have had a review in the preceding year [1.6, 7.10]
  - Emergency admission rate for children (0-18) with asthma [1.6]
  - Mortality from asthma [1.6, 3.4, 7.10]
- 2.6 Problems of Respiratory System - Spend
  - Cost of respiratory - non-elective admissions
  - Spend on primary care prescribing for Respiratory items
- 7.10 Asthma Pathway
  - Respiratory -asthma prevalence (%)
  - The percentage of patients aged 8+ with asthma (diagnosed on or after 1 April 2006), on the register, with measures of variability or reversibility recorded between 3 months before or any time after diagnosis'
  - Spend on primary care prescribing for asthma
  - Emergency admission rate for children (0-18) with asthma

## GRASP-COPD and case finder

- 1.6 Problems of Respiratory System
  - Chronic obstructive pulmonary disease (COPD) (%) Reported to estimated prevalence: disease register and population [1.6, 7.9]
  - % of COPD patients with a record of FeV1 in the preceding 12 months [1.6, 7.9]
  - % of COPD patients who have had a review, including an assessment of breathlessness using MRC dyspnoea scale in the preceding year (COPD003) [1.6, 7.9]
  - Mortality from COPD [1.6, 3.4, 7.9]
- 2.6 Problems of Respiratory System - Spend
  - Cost of rRespiratory - non-elective admissions
  - Spend on primary care prescribing for respiratory items
- 7.9 COPD Pathway
  - COPD prevalence (%)
  - % of people aged 18+ who are self-reported occasional or regular smokers
  - Spend on primary care prescribing for obstructive airways disease
  - Cost of respiratory - obstructive airways disease - non-elective admissions

## GRASP-AF and Warfarin Patient Safety

- 1.5 Problems of Circulation
  - In those patients with atrial fibrillation in whom there is a record of a CHADS2 score of 1, the percentage of patients who are currently treated with anti-coagulation drug therapy or anti-platelet therapy
- 2.5 Problems of Circulation - Spend
  - Spend on primary care prescribing for circulation [2.5, 7.8]
- 7.8 Stroke Pathway
  - Mortality from stroke\*
  - % of patients with a non-haemorrhagic stroke or TIA with a record that an anti-platelet agent or an anti-coagulant is being taken\*
  - \*Only in patients with AF

## Diabetes Care and case finder

- 1.2 Endocrine, Nutritional and Metabolic Disorders
  - Additional risk (%) of complication among people with diabetes for...
  - stroke [1.1, 1.2, 7.4]
  - myocardial infarction [1.2, 7.4]
  - heart failure [1.2, 7.4]
  - % of diabetic patients...
  - whose last cholesterol was 5mmol or less [1.2, 1.5, 7.4]
  - whose last HbA1c was 64 mmol/mol or less in last year [1.2, 7.4]
  - whose last BP was 150/90 or less [1.2, 7.4]
  - receiving all 8 care processes [1.2, 7.4]
  - having retinal screening in last year [1.2, 7.4]
- 2.2 Endocrine, Nutritional and Metabolic Disorders - Spend
  - Cost of endocrine - non-elective admissions
  - Spend on primary care prescribing for endocrine
- 7.4 Diabetes Pathway
  - Diabetes mellitus prevalence (17+) (%)
  - Spend on primary care prescribing for endocrine - diabetes
  - Cost of endocrine - diabetes - non-elective admissions
  - Obesity prevalence (16+)

### Accessing PRIMIS quality improvement tools

Use of all PRIMIS quality improvement tools mentioned in this flyer is FREE to anyone registered with the PRIMIS Hub membership service. (Please note: free use of some tools is restricted to practices in England).

Basic membership is FREE of charge and includes access to several quality improvement tools and both the CHART and CHART Online software tools. For more information please see:

[nottingham.ac.uk/primis/joinus](http://nottingham.ac.uk/primis/joinus)

### Implementation and get in touch

PRIMIS can offer a range of flexible solutions to support both practices and CCGs with quality improvement tool implementation and with training and support services.

[enquiries@primis.nottingham.ac.uk](mailto:enquiries@primis.nottingham.ac.uk)

0115 84 66 420

[nottingham.ac.uk/primis](http://nottingham.ac.uk/primis)

# PRIMIS

Date of issue: January 2018

# RightCare



The University of  
Nottingham

UNITED KINGDOM • CHINA • MALAYSIA

© University of Nottingham. All rights reserved