

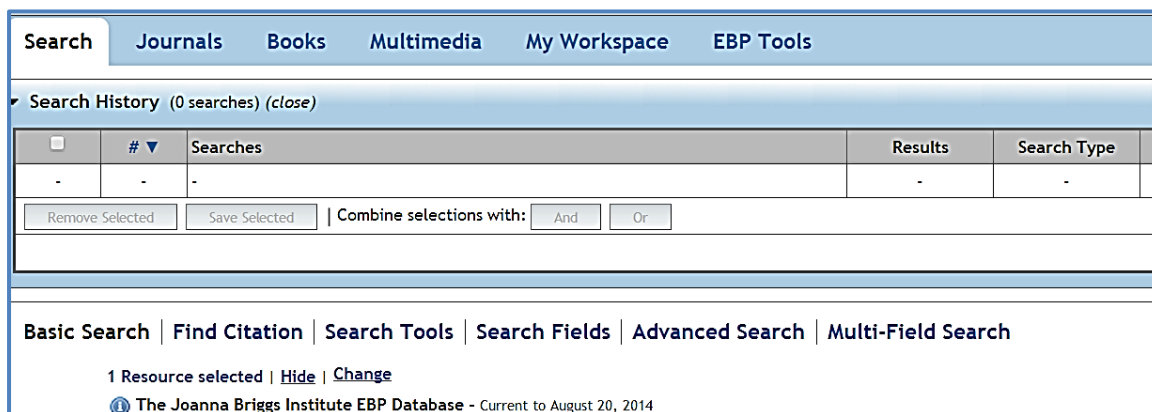
Searching the Joanna Briggs Institute (JBI) Database via Athens on OvidSP

Bookmark the following link to go straight to JBI via Athens and log in your your Athens login

<http://ovidsp.ovid.com/athens/ovidweb.cgi?T=JS&NEWS=n&CSC=Y&PAGE=main&D=jbi>

Alternatively you can find JBI in the MyAthens site at www.openathens.net listed under the Ovid resources section

JBI defaults to simple search mode. Click “Advanced Search” which allows you to combine searches



The screenshot shows the OvidSP search interface. At the top, there are navigation tabs: Search, Journals, Books, Multimedia, My Workspace, and EBP Tools. Below the tabs is a search history section with a table containing one row of dashes. Below the table are buttons for 'Remove Selected' and 'Save Selected', and a 'Combine selections with:' section with 'And' and 'Or' buttons. At the bottom, there are search options: Basic Search, Find Citation, Search Tools, Search Fields, Advanced Search, and Multi-Field Search. Below these options, it says '1 Resource selected | Hide | Change' and 'The Joanna Briggs Institute EBP Database - Current to August 20, 2014'.

To search enter the keyword(s) into the search box and click “search”. You can also select a Publication Type or Subject Area Node to refine your search

Basic Search | Find Citation | Search Tools | Search Fields | Advanced Search | Multi-Field Search

1 Resource selected | [Hide](#) | [Change](#)

The Joanna Briggs Institute EBP Database - Current to August 20, 2014

Enter keyword or phrase (* or \$ for truncation) Keyword Author Title Journal

▼ Limits (close) Include Multimedia

Publication Year - -

Publication Types

-
- Best Practice Information S
- Consumer Information She
- Evidence Summaries
- Recommended Practices
- Systematic Review Protoc...

Subject Area Nodes

-
- Aged Care
- Burns Care
- Cancer Care
- Chronic Disease
- Diagnostic Imaging

To find systematic reviews with breast cancer in the title type breast cancer into the search box. Click the title icon to limit the search to the words if they occur in the title. You can also search as keyword but you may find some of the results won't be as relevant. Select systematic reviews in the "Publication Type" menu. You can further refine the search by adding a date limit if you wish

Basic Search | Find Citation | Search Tools | Search Fields | Advanced Search | Multi-Field Search

1 Resource selected | [Hide](#) | [Change](#)

The Joanna Briggs Institute EBP Database - Current to August 20, 2014

Enter title word or phrase to search. Keyword Author Title Journal

▼ Limits (close) Include Multimedia

Publication Year - -

Publication Types

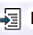

- Consumer Information She
- Evidence Summaries
- Recommended Practices
- Systematic Review Protoc...
- Systematic Reviews**
- Technical Reports

Subject Area Nodes

-
- Aged Care
- Burns Care
- Cancer Care
- Chronic Disease
- Diagnostic Imaging

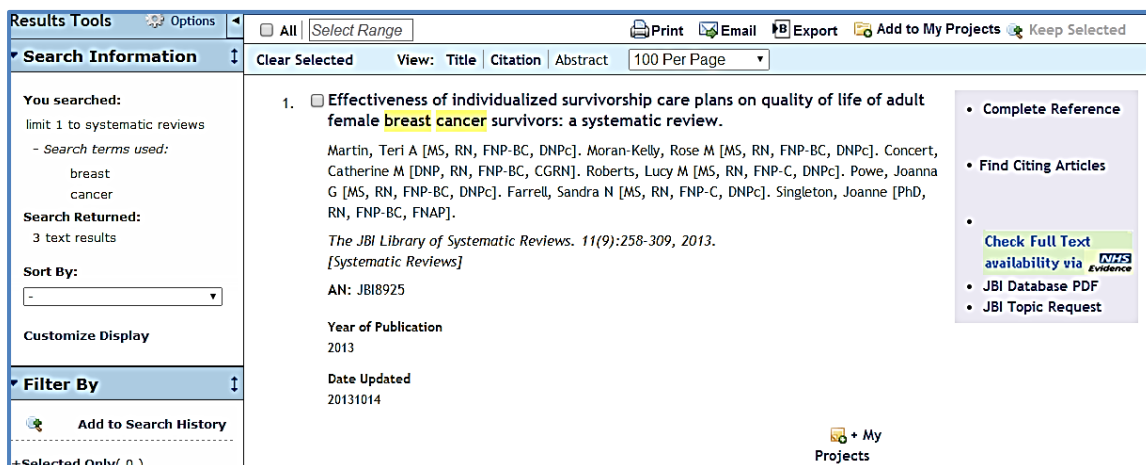
Results are displayed in the search history box, which is above the search box. Set 2 has been limited to

systematic reviews, retrieving three results. To view the results click on “Display”

# ▼	Searches	Results	Search Type	Actions
2	limit 1 to systematic reviews	3	Advanced	 Display
1	breast cancer.m_titl.	21	Advanced	 Display

Selected Save Selected Combine selections with: And Or

The title and abstract are displayed along with Year of Publication and Date Updated. To view a pdf version of the full systematic review click on “JBI Database PDF”

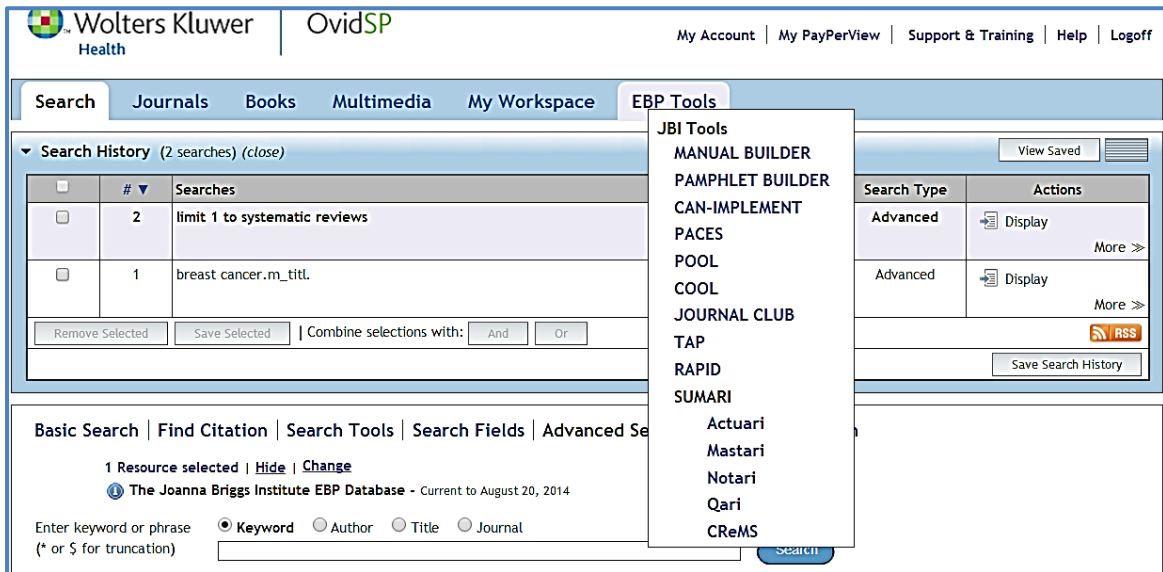


The screenshot shows the JBI search results interface. On the left, there is a sidebar with 'Search Information' and 'Filter By' sections. The main area displays a search result for 'Effectiveness of individualized survivorship care plans on quality of life of adult female breast cancer survivors: a systematic review'. The result includes author names (Martin, Teri A, Moran-Kelly, Rose M, etc.), the journal title 'The JBI Library of Systematic Reviews', and the year of publication '2013'. On the right, a sidebar offers actions such as 'Complete Reference', 'Find Citing Articles', 'Check Full Text availability via JBI Database PDF', and 'JBI Topic Request'.

Evidence Based Practice Tools on JBI

The EBP Tools allow your institution to implement evidence based practice, complete with benchmarking . There are a range of tools such as research Tools, Appraisal and Implementation Tools, Point of Care Tools, and Quality Improvement Tools.

To use the JBI EBP Tools such as Manual Builder etc you need to create a separate account to your Athens account. The EBP Tools can be seen to the left of the abstracts page or they also exist as a separate tab (EBP Tools) after you log in to JBI via athens



When you click on a link such as Manual Builder you will be prompted to login. If you haven't already created an account there is an option to "Create Account", which is a separate login to your Athens login.

