



University of
Nottingham

UK | CHINA | MALAYSIA

Nottingham Centre for the Advancement of Research into
Supportive, Palliative and End-of-life Care (NCARE)

NCARE newsletter

Summer 2017

nottingham.ac.uk/go/ncare



Welcome to Dr Nicola Turner,
Research Fellow

Annual lecture by
Professor Jane Seymour

New co-developed Medicine
Usage Review (MUR) programme

Welcome to the Summer NCARE Newsletter

Kristian Pollock,
Principal research fellow and interim lead of NCARE

The new look design continues and we have published this newsletter online so it can be shared extensively with all our research colleagues and partners, who support the advancement of research into supportive, palliative and end-of-life care.

Each issue covers the latest news, events and publications from NCARE, plus a research focus which gives real insight into the work that is being done.

We hope you find the newsletter of interest. Please send any feedback or ideas for future editions to kristian.pollock@nottingham.ac.uk. The next edition is planned for spring 2018.



Focus



Pictured:
Professor Jane Seymour

This year's annual lecture 'Power to the people: do public health campaigns improve awareness and quality of palliative care?' was delivered by Jane Seymour, Professor of Palliative and End-of-Life Care, School of Nursing and Midwifery, University of Sheffield.

Jane talked about the right to health, including a right of access to good quality palliative care. Jane examined the complexities of awareness raising, and distilled key messages from international research.

“
Raising awareness is a key plank of the public health approach to palliative care, but involves consideration of subjects most of us prefer not to address.
”

Health Education England (HEE) Part of an internship

Dr Ruth Parry and Becky Whittaker

Dr Ruth Parry and Becky Whittaker have been working with Health Education England (HEE) as part of an internship.

One of the problems of healthcare research is that it can be separate from actual practice, and difficult to get research findings translated into practice. One way of trying to close this gap is for researchers and educators to partner with government and professional bodies that oversee and provide guidance to practitioners.

Becky Whittaker, a member of the NCARE team, is doing just this at the moment, working one day per week with Health Education England (HEE), a part of the Department of Health that oversees training of healthcare professionals and staff.

Becky is advising them about end-of-life care training and communication skills training, drawing on her deep understanding of what works in healthcare training and on the work of the NCARE researchers on end-of-life care communication.

The particular area of focus at the moment is on the Person Centred Skills and

Training Framework, due to be launched by the Skills for Health and Health Education England during the summer. We have had an early view of this framework, which provides particularly detailed and evidence-based guidance on communication. We feel this is going to raise people's interest in the importance of skilful conversations and we will provide a link on the NCARE website once it is launched.

Please contact Becky for any information regarding communication skills training and the Person Centred Skills and Training Framework at becky.whittaker@nottingham.ac.uk.

Updates

We welcome Dr Nicola Turner.

Nicola joins the team as a Research Fellow working on the Managing Medicines at Home study. More information about the study can be found at: nottingham.ac.uk/ncare/mmh



Dr Kristian Pollock presented a well-received plenary presentation at the Tayside Palliative Care National Conference in Dundee on 22 June. Kristian talked around constructing choice in death and dying.



Practitioner Research Network Open meetings



Keep up to date with
all upcoming events at
[nottingham.ac.uk/ncare/
events](http://nottingham.ac.uk/ncare/events)

Glenys Caswell, Senior Research Fellow

We are pleased to announce further dates for our research seminars for 2017.

These seminars are open to practitioners, educators, researchers and the public. They start at 12.30 with lunch included. There will be time after talks for discussion and networking.

Details about upcoming seminars are on our website and also advertised via email subscription. If you would like to be added to the email list please contact glenys.caswell@nottingham.ac.uk.

Upcoming seminars

Thursday 21 September
Dr Louise Bramley and Dr Nicola Turner talk about their experiences of undertaking PhDs in end-of-life research.

Thursday 23 November
Dr Julie Carter
Leadership Fellow in End-of-Life Care, Transforming End-of-Life Care Team, University

College London Hospitals. Julie will talk about initiatives to help develop and sustain improvements in care, focussing on communication and compassion as part of a five year quality improvement programme for patients in the last year of life.

Special seminar

We were delighted to welcome Professor Merryn Gott, Director of the bi-cultural Te Arai Palliative Care and End-of-Life Research Group at The University of Auckland, who presented a special seminar:

‘Developing innovative resources to support family caregivers within palliative care: the New Zealand experience’

The seminar described a research programme exploring the needs of family caregivers, and working collaboratively with them to develop

innovative new resources to address these needs. Resources from the project were shared, including a music video made with Pacific Island family caregivers and digital stories made by Māori whānau caregivers (whānau is a Māori term for extended family). The use of digital media as a means of telling the stories of marginalised groups was also discussed and their dissemination within communities.



Pictured:
Professor Merryn Gott

Study Palliative and end-of-life-care

Becky Whittaker, Assistant Professor Palliative and End-of-Life Care

The School of Health Sciences provides the opportunity to study palliative and end-of-life care at undergraduate and masters level.

There are two specialist palliative and end-of-life care 30 credit modules:

Critical perspectives in palliative and end-of-life care

This module explores contemporary debates including ethics, decision making, withdrawing treatment and advance care planning.

Palliative and end-of-life care management

This module focuses on the delivery and management of care including:

- generic symptom management of complex symptoms
- application of end-of-life care principles
- using best practice tools to manage last days of life.

These modules can be completed as either:

- stand-alone learning

- together to gain a PGCert
- credits towards a masters degree.

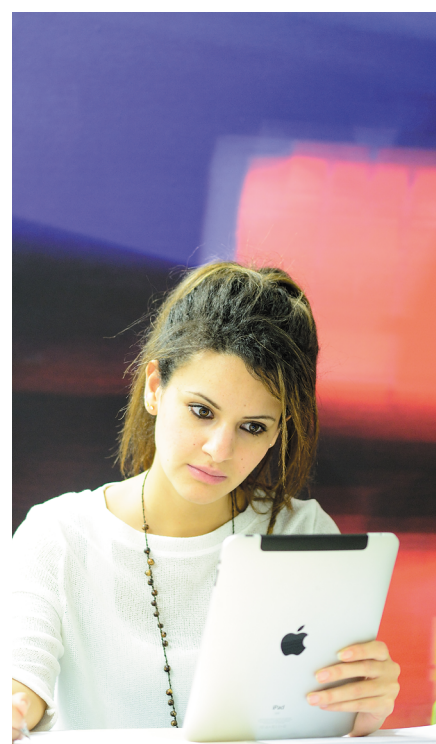
Details about studying the modules individually, including costs, dates and registration can be found at nottingham.ac.uk/go/hscpd.

Information about studying both modules to gain a PGCert in Health and Social Care (palliative and end-of-life care) can be found at nottingham.ac.uk/go/hscpgcert.

If you are interested in studying both modules to count towards a full-time advanced nursing masters degree with specialist pathways, including palliative and end-of-life care, please visit nottingham.ac.uk/go/advnursemsc.

For all questions about palliative and end-of-life care modules, please contact:

Becky Whittaker
Assistant Professor Palliative and End-of-Life Care
becky.whittaker@nottingham.ac.uk



Pictured: Nampiima Teddie Valentine, MSc Advanced Nursing



For further details about our study options, visit: nottingham.ac.uk/studywithus

Evaluation of a new co-developed MUR awareness programme

Dr Asam Latif
University of Nottingham Researcher

A team of researchers at the University of Nottingham, led by Dr Asam Latif, have co-developed (with patients who are medically under-served) a short, free Medicines Use Review (MUR) e-learning programme, specifically for community pharmacy staff.

They are inviting pharmacists and support staff who are directly involved with identifying, inviting and delivering the MUR service to evaluate the e-learning.

The e-learning is designed to be short and concise. Three topics are covered:

- Discovering and understanding under-served communities
- Exploring the medicine experiences and needs of patients who are under-served
- Effectively interacting and engaging patients who are under-served

The evaluation involves a short online survey, followed by the

e-learning (sent via email) and a follow up online survey three months later. The researchers are inviting all pharmacies within Nottinghamshire area to take part. The work is funded by the Department of Health (NIHR) and the project has ethical and governance approvals.

The evaluation started in June and Asam is finalising the e-learning which should be ready for evaluation over the summer.



More information about the project is available at:
<http://bmjopen.bmj.com/content/6/12/e013500.info>

If you would like further information please contact asam.latif@nottingham.ac.uk.

Recent NCARE publications

Our most recent publications from our members and collaborators

Agreli HF, Peduzzi M, and Bailey C (2017), 'The relationship between team climate and interprofessional collaboration: Preliminary results of a mixed methods study'. *Journal of Interprofessional Care*, vol31/2:184-186. doi: 10.1080/13561820.2016.1261098.

Archer W, Latif A, and Faull C. (2017), 'Communicating with palliative care patients nearing the end of life'. *The Pharmaceutical Journal*, vol 298(7897):39-43, <https://doi.org/10.1211/PJ.2017.20202154>.

Brand, S., Pollock. K. (2017), 'How is continuity of care experienced by people living with Chronic Kidney Disease?' *Journal of Clinical Nursing*, doi: 10.1111/jocn.13860.

Latif, A., Carter, T., Rychwalska-Brown, L., Wharrad, H., & Manning, J. (2017), 'Co-producing a digital educational programme for registered children's nurses to improve care of children and young people admitted with self-harm'. *Journal of Child Health Care*, 21(2):191-200, doi: 10.1177/1367493517697853.

Manning, J. C., Carter, T., Latif, A., Horsley, A., Cooper, J., Armstrong, M., & Wharrad, H. (2017), 'Our Care through Our Eyes'. Impact of a co-produced digital educational programme on nurses' knowledge, confidence and attitudes in providing care for children and young people who have self-harmed: a mixed-methods study in the UK. *BMJ open*, 7(4), e014750.

Pino M, Parry R, Feathers L, Faull C (2017), 'Is it acceptable to video-record palliative care consultations for research and training purposes? A qualitative interview study exploring the views of hospice patients, carers and clinical staff'. *Palliative Medicine*, doi: 10.1177/0269216317696419.

Pollock, K and Warner, M. 2017, 'Introduction, Qualitative research in Age and Ageing, Virtual issue', https://academic.oup.com/ageing/pages/qualitative_research.

Popejoy, E., Pollock, K., Almack, K., Manning, J.C., Johnstone, B. (2017), 'Decision-making and future planning for children with life-limiting conditions: a qualitative systematic review and thematic synthesis'. *Child: Care, Health and Development*, doi:10.1111/cch.12461.

Waring, J., & Latif, A. (2017), 'Of Shepherds, Sheep and Sheepdogs? Governing the Adherent Self through Complementary and Competing 'Pastorates''. *Sociology*, doi: 10.1177/0038038517690680.

Whittaker B, Parry R, Bird L, Watson, S and Faull, C (2017), 'Development, validity and reliability testing of the East Midlands Evaluation Tool (EMET) for measuring impacts on trainees' confidence and competence following end of life care training'. *BMJ Supportive & Palliative Care*. doi: 10.1136/bmjspcare-2016-001100.

Wilson, E & Seymour, J (2017), 'The importance of interdisciplinary communication in the process of anticipatory prescribing'. *International Journal of Palliative Nursing*, vol23/3:129-135.



University of
Nottingham

UK | CHINA | MALAYSIA

For more information about ncare, visit
nottingham.ac.uk/go/ncare



+44 (0)115 82 30810



kristian.pollock@nottingham.ac.uk



UoNHealthSciences



@UoN_SHS

**This publication is available
in alternative formats.**

+44 (0)115 951 5559

University of Nottingham has made every effort to ensure that the information in this brochure was accurate when published. Please note, however, that the nature of the content means that it is subject to change from time to time, and you should therefore consider the information to be guiding rather than definitive.

© University of Nottingham 2017. All rights reserved.
Published June 2017.