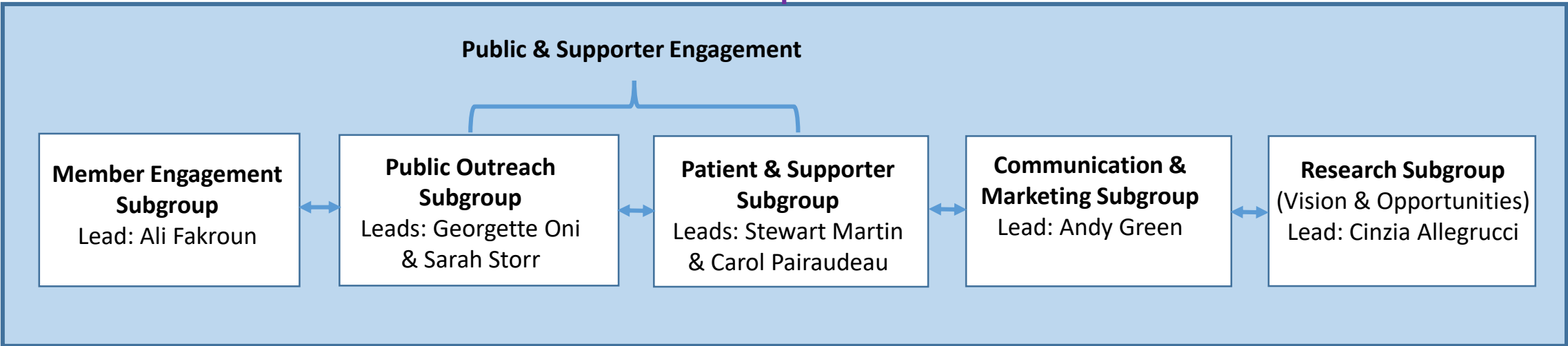


# Nottingham Breast Cancer Research Centre (NBCRC) Organisational Structure

**NBCRC Management Group**  
Director: Stewart Martin, Deputy Director: Andy Green  
& Subgroup Leads with Clinical Lead

**Financial Oversight Committee**  
Chair: Katherine Tallant



**NBCRC Membership**

**Full Membership:** Active breast cancer researchers from the University of Nottingham or Nottingham University Hospitals with: a minimum of 3 breast cancer specific research papers in the last 3 years (as first or senior author) **and/or** a PI on a breast cancer specific research grant in the last 5 years.

**Associate Membership:** Open to all postdocs, technicians and PhD students working within a breast cancer research environment/project

**Affiliate Membership:** Open to any clinician, nurse or researcher working with UoN or NUH with an interest in breast cancer research