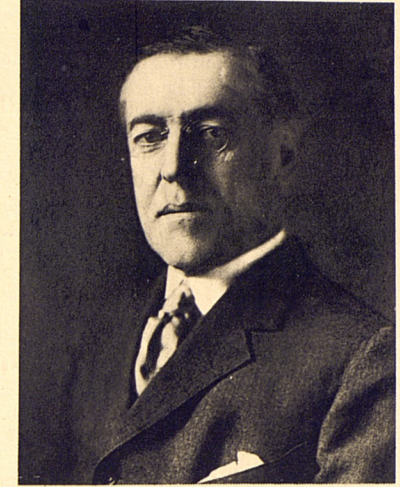


ORIGIN OF THE LEAGUE OF NATIONS

January 8th, 1918. Fourteen Points laid down by President Wilson as the basis of world peace. (*)



Woodrow WILSON

January 16th, 1920. First meeting of Council at Paris.

November 1st, 1920. League Headquarters moved from London to Geneva.

January 25th, 1920. League accepted in principle.

April 28th, 1920. Covenant adopted.

November 15th, 1920. First Meeting of Assembly at Geneva.

January 10th, 1920. League came into being; Secretariat established in London.

(*) THE FOURTEENTH POINT :

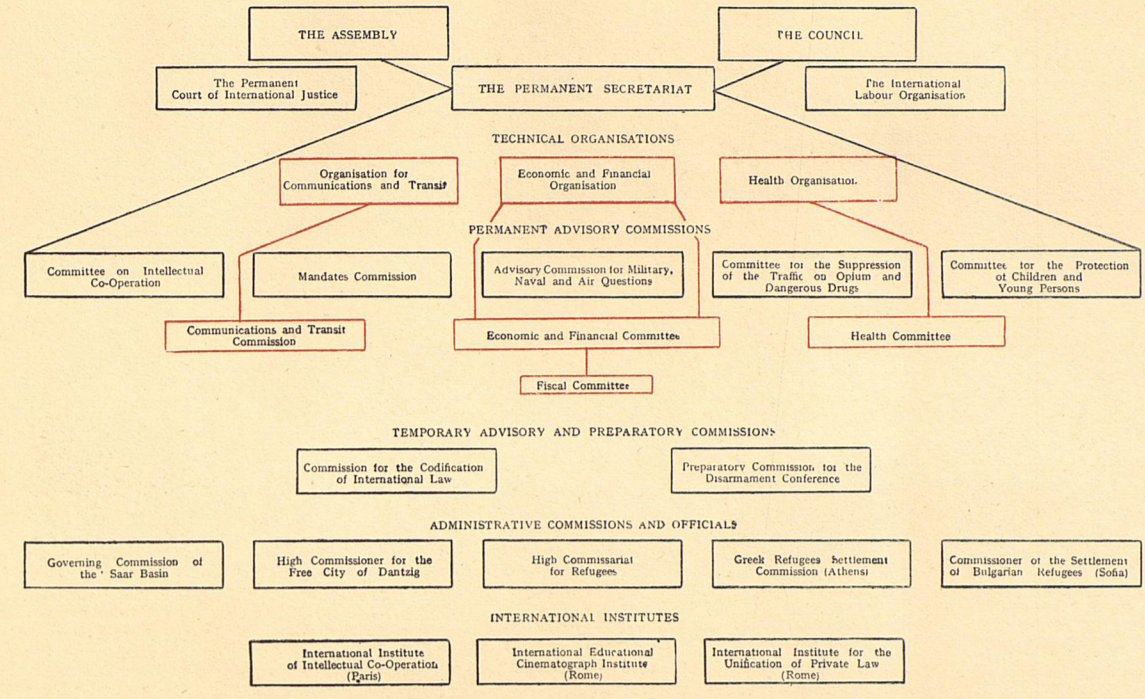
" A General Association of Nations must be formed under specific covenants for the purpose of affording mutual guarantees of political independence and territorial integrity to great and small States alike."



League of Nations Commission of the Peace Conference

Seated (left to right) : VISCOUNT CHINDA; BARON MAKINO; M. BOURGEOIS; LORD ROBERT CRICHTON; M. ORLANDO; M. PESSOA; M. VENIZERLOS. Standing (left to right) : M. DIAMANDI; M. TCHU WEI; COLONEL HOUSE; M. DZIMOWSKI; M. VESNITCH; GENERAL SMUTS; PRESIDENT WILSON; M. KHARAR; M. HYMANS; M. WELLINGTON KOO; M. BATALHA REIS; M. SCIALOJA; M. LAUREAUDE.

ORGANISATION OF THE LEAGUE OF NATIONS



THE LEAGUE OPERATES THROUGH :

- I. THE ASSEMBLY. — II. THE COUNCIL. — III. AUXILIARY ORGANISATIONS. IV. THE PERMANENT SECRETARIAT



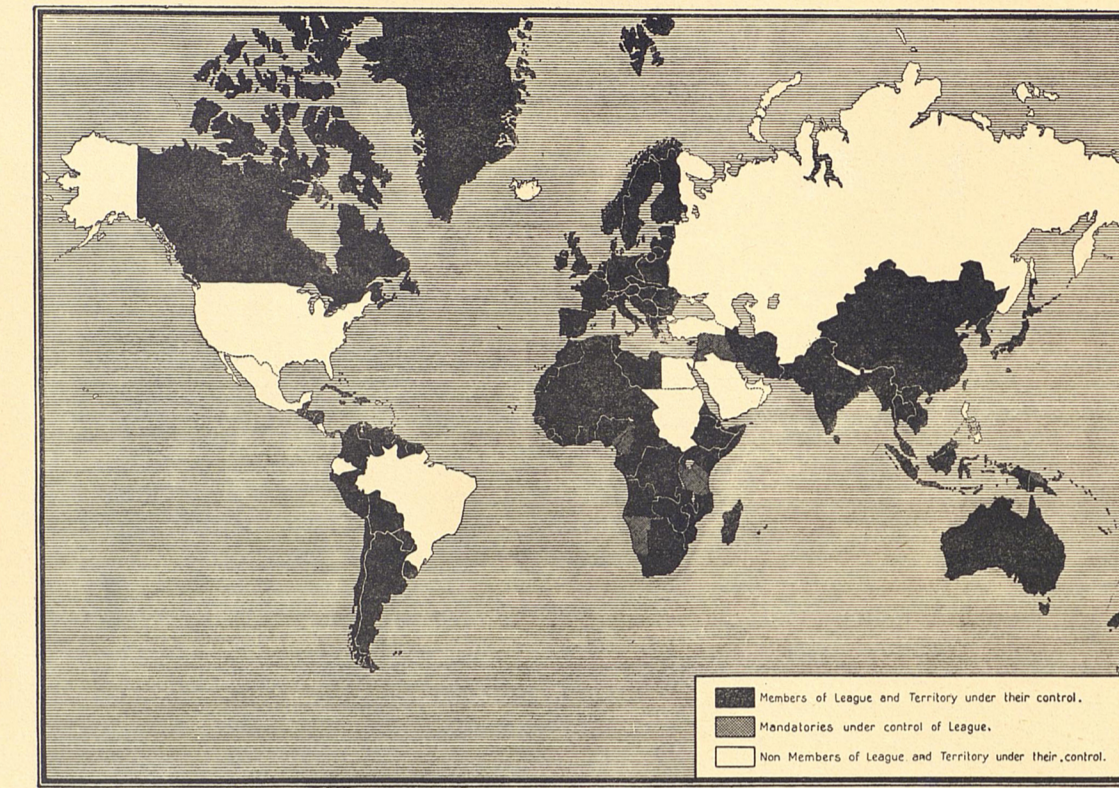
Geneva — Home of the League

THE COVENANT

THE HIGH CONTRACTING PARTIES. In order to promote international co-operation and to achieve international peace and security : By the acceptance of obligations not to resort to war; By the prescription of open, just and honourable relations between nations; By the firm establishment of the understandings of international law as the actual rule of conduct among Governments; and By the maintenance of justice and a scrupulous respect for all treaty obligations in the dealings of organised peoples with one another :

Agree to the Covenant of the League of Nations.

STATES MEMBERS



Any fully self-governing State, Dominion or Colony may become a Member of the League on a two-thirds vote of the Assembly.

THE FIFTY-FOUR MEMBERS OF THE LEAGUE :

Table listing 54 member states of the League of Nations

NON-MEMBERS :

Table listing non-member states of the League of Nations

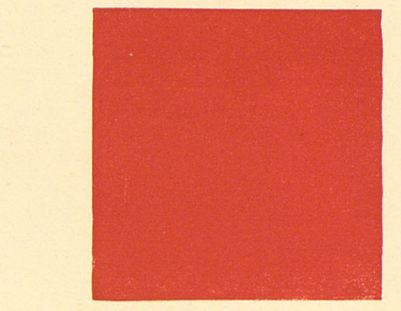
* Withdraw from the League on June 18th, 1928.

** January 14th, 1927.

BUDGET OF THE LEAGUE (continued)

CONTRIBUTION OF EACH STATE FOR 1929. Total \$5,214,811 — £1,071,621 7s. divided into 986 units. Each unit = \$5,289 — £1,086 17s.

Table showing budget contributions of various states for 1929



Cost of world armaments for one year (1929). Cost of the League for five years.

The cost of world armaments for 1929 would maintain the League for 68 1/2 years.

THE ASSEMBLY

PRESIDENTS OF THE ASSEMBLY



PLENARY MEETING OF THE ASSEMBLY



Each State represented has one vote, and all decisions, except on matters of procedure, require unanimity.

ANNUAL CONFERENCE OF MEMBER STATES

Meets in Geneva in September. Reviews work of past year and outlines programme for coming year; votes budget of the League and all its Organisations; admits new Members; elects non-permanent Members of the Council; co-operates with the Council in the election of the Judges of the Permanent Court of International Justice; votes amendments to the Covenant (subject to ratification).

The Assembly divides its work among six Committees : Legal and Constitutional Questions, Technical Organisations, Reduction of Armaments, Budget and Finance, Social and General Questions, Political Questions, on which every State may have a representative.

The Committee report to the full Assembly, which has the final vote on all questions.



THE COUNCIL

1920-1930



MEMBERSHIP OF THE COUNCIL

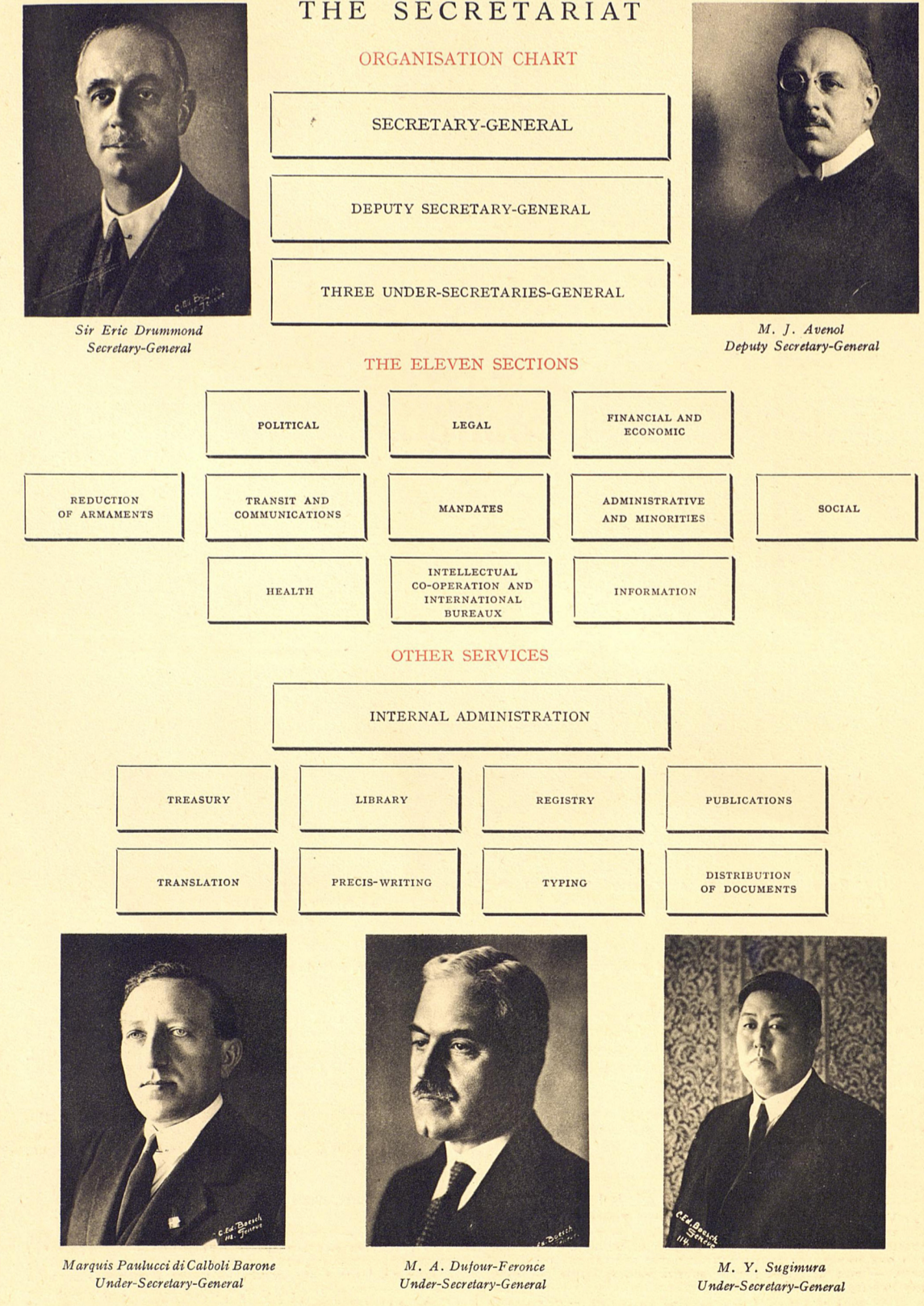
1920-1921. Eight Members including four permanent. — 1922-1926. Ten Members including four permanent. — Since 1927, Fourteen Members including five permanent.

THE COUNCIL IN 1929-30. Permanent five : British Empire, France, Germany, Italy, Japan. Elected nine : Chile, Poland, Romania, until 1930 — Canada, Cuba, Finland, until 1931 — Persia, Spain, Venezuela. Declared realignable : Poland and Spain.

Rotation of the elected Members is assured by the rules adopted by the Assembly in 1926. 1. Three Members are elected each year for a three-year term. 2. A Member cannot be re-elected during a period of three years unless declared re-eligible by two-thirds of the Assembly. 3. Not more than three re-elected Members may serve at the same time. 4. The Assembly reserves the right to proceed at any time to a new election of all the non-permanent Members.

THE SECRETARIAT

ORGANISATION CHART



The Secretariat is the permanent civil service of the League. It is composed of officials from nearly fifty nations, appointed by the Secretary-General and responsible to him. The Secretariat does all the preparatory work for the Council, Assembly, Committees and Conferences, and executes their decisions.

The League of Nations: A Pictorial Survey, 1928

United Nations Library and Archives, Geneva