

# Fault Detection of Railway Point Systems



## Background

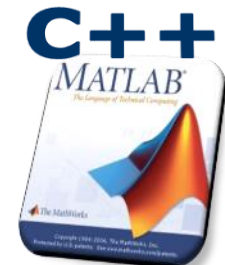
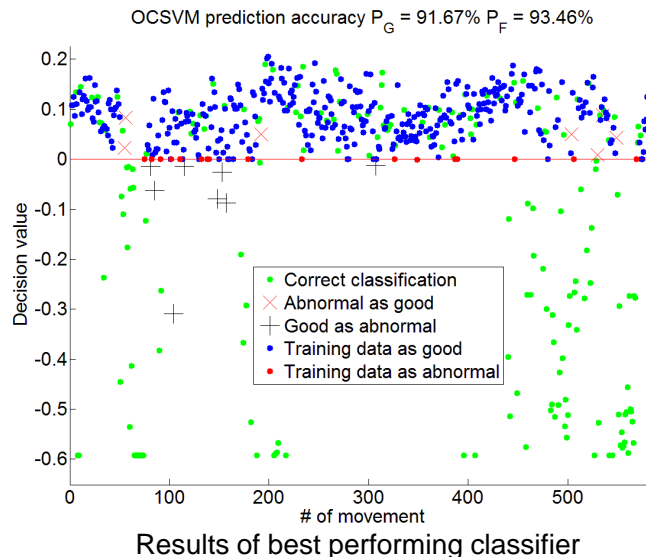
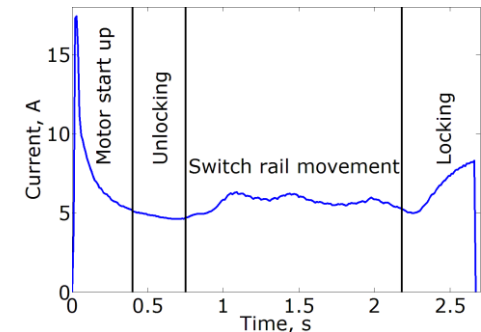
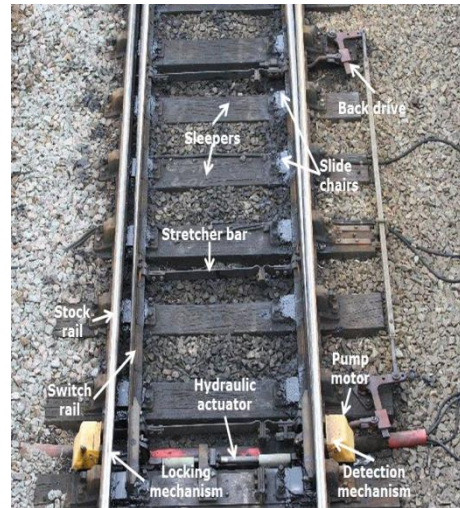
A railway point system (RPS) is combined of electrical and mechanical installations enabling railway trains to be guided from one track to another. Ability to timely detect the deteriorating condition would be useful in planning maintenance of RPS.

## Objective

- (i) Propose a methodology for the fault detection of RPS.
- (ii) Implement the proposed methodology in software.
- (iii) Validate it on the data obtained from the infield RPS.

## Method

Support Vector Machine



**LIBSVM**