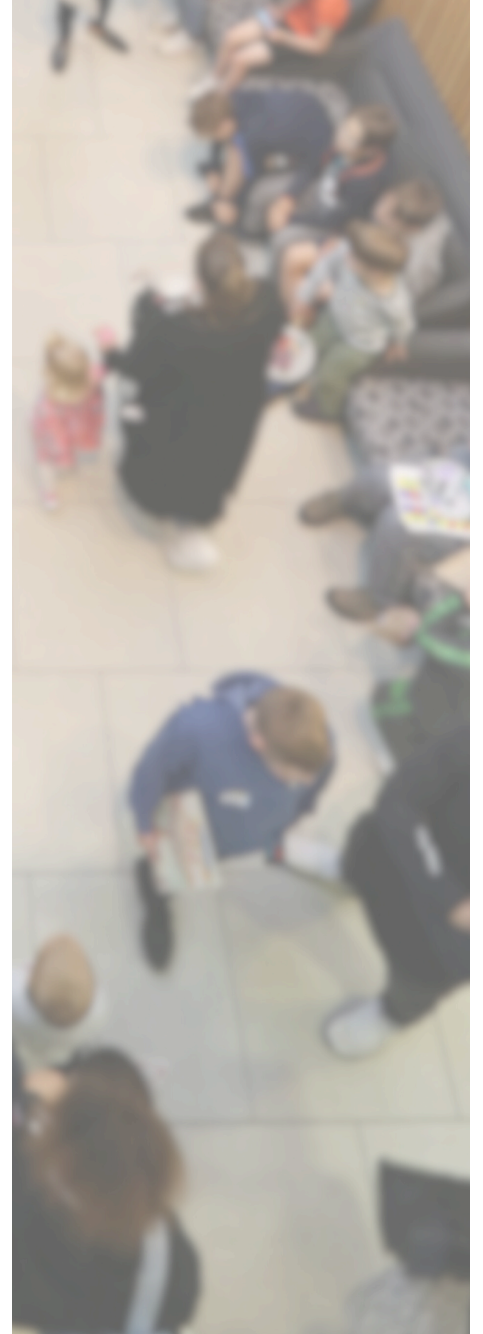




PRIMARY AND PARTNERSHIPS

# Family Discovery Day Impact Report

2023-24



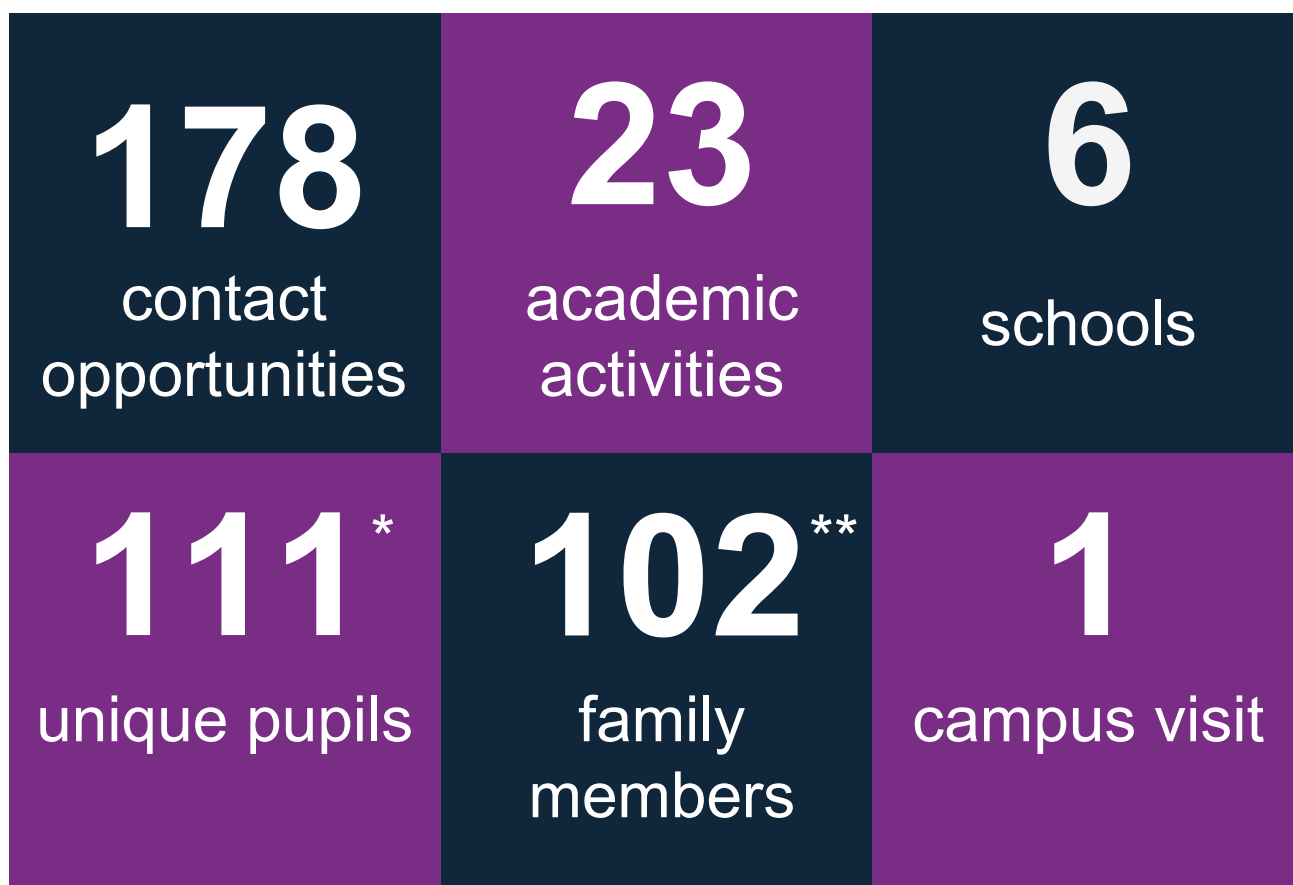


# Family Discovery Day

## What is Family Discovery Day?

Family Discovery Day is a programme designed for KS2 pupils and their families, offering the opportunity for the whole family to learn about a range of university subjects and explore future aspirations. Before the campus visit, we deliver a session in each participating school to provide an introduction to university life.

The Family Discovery Day visit takes place on campus on a Saturday in June and sees families interact with hands-on, drop-in activities that are delivered by academics and students. These cover a wide range of university subjects. Family Discovery Day did not run in 2022/23 so it has been a pleasure to see its return this year.



\*Unique pupils is based on how many pupils attended the campus visit

\*\*This is the number of family members attending the campus visit. 93 family members attended the in-school sessions.



# Family Discovery Day

Examples of academic subjects at the Family Discovery Day

<b>Medicine</b>	<b>Classics</b>	<b>Maths</b>	<b>Business</b>
<b>History</b>	<b>Vet Medicine</b>	<b>Physics</b>	<b>Plant Science</b>
<b>Law</b>	<b>Psychology</b>	<b>Engineering</b>	<b>Pharmacy</b>
<b>Biology</b>	<b>Chinese culture</b>	<b>Archeology</b>	<b>Critical research</b>

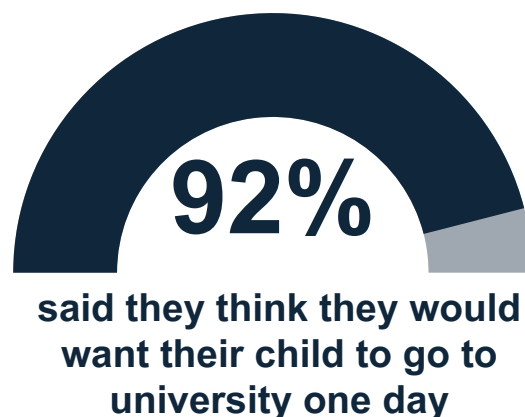
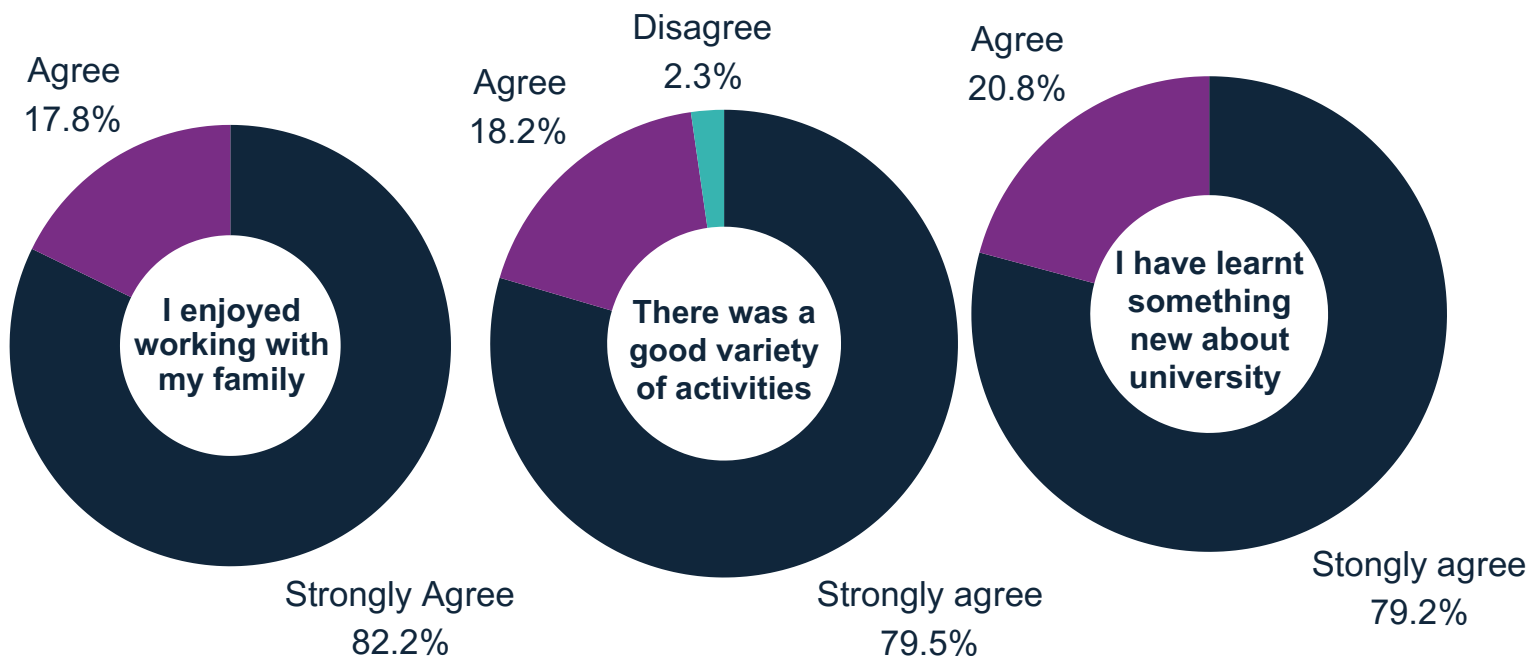
## How is the Family Discovery Day programme evaluated?

We collect feedback from pupils and family members both at the in-school sessions and at the campus visit using questionnaires. These include a combination of free text questions and statements for respondents to express their level of agreement with.



# Family Discovery Day

## Adult/family member feedback



**“(There was) such a good variety of activities and lots to make learning fun!”**

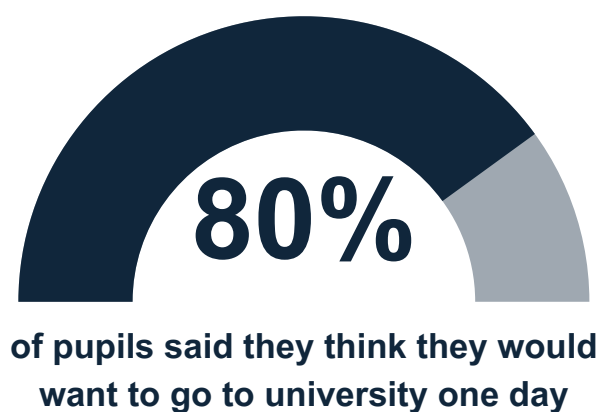
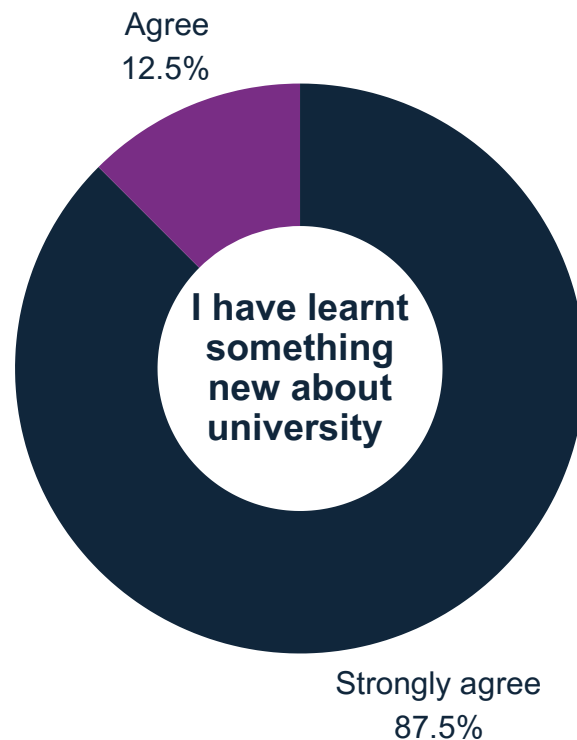
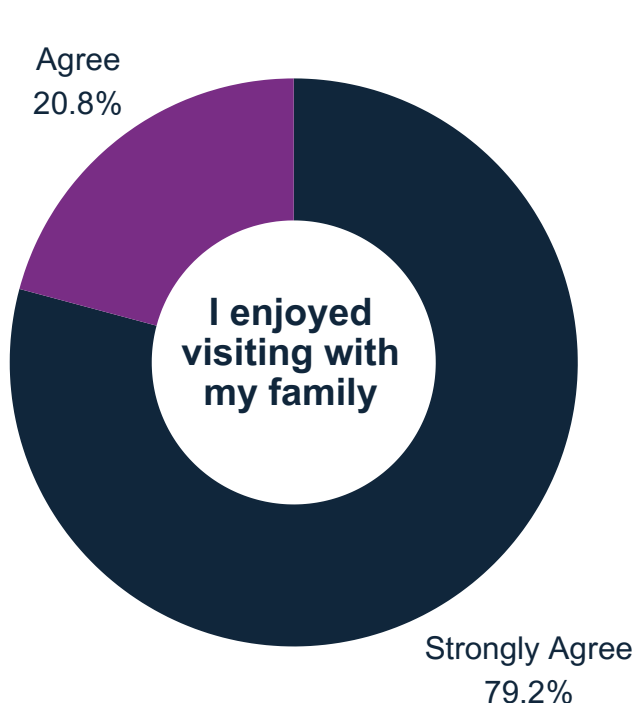
*Parent/carer, Family Discovery Day campus visit*





# Family Discovery Day

## Pupil feedback



**“(It was) really awesome visiting other  
people and learning!”**

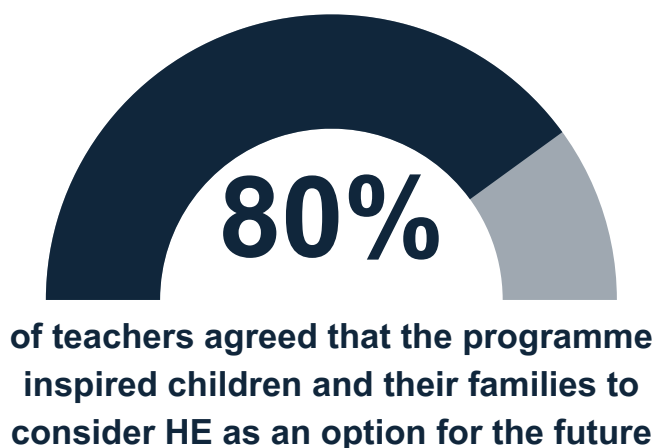
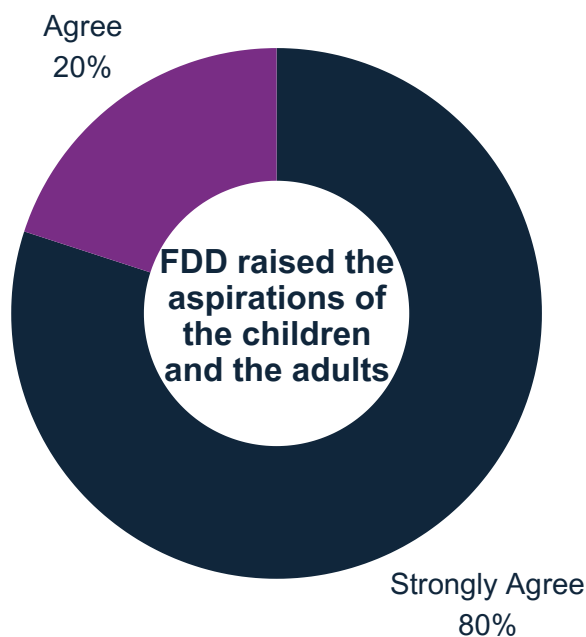
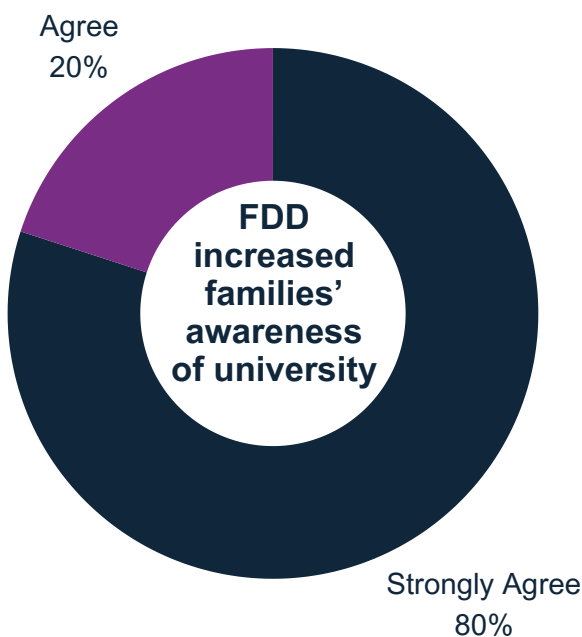


*Primary school pupil, Family Discovery  
Discovery Day campus visit*



# Family Discovery Day (FDD)

## Teacher feedback



**“All of families were extremely positive about the event and would have happily stayed for longer. (It was) a great opportunity to experience university in a fun way”**



*Primary School Teacher, Family Discovery Day*

