



University of
Nottingham

UK | CHINA | MALAYSIA

Community Newsletter

Winter 2023



Castle Meadow
Campus Open
Day

New crime prevention
partnership

Nottingham
Neighbourhood
Award for caring
students

Welcome

Welcome to the Winter 2023 edition of the University of Nottingham's Community Newsletter, our opportunity to share with you the many ways in which the university and our students are positively engaging with our neighbours and supporting communities across the city.

In this edition, we are excited to be able to bring you some positive news on the progress of our new Castle Meadow Campus and a new partnership with Notts police as part of our recently launched Student Living Strategy with Nottingham Trent University and Nottingham City Council to work proactively together on shared priorities for housing and local services, as well as maximising the benefits that students bring to Nottingham. In addition, you will hear about an award for some of our inspirational students who came to the aid of a local resident in her moment of need.

Since our last edition of the Newsletter, our community has been deeply affected by the tragic loss of two of our talented students, Grace O'Malley Kumar and Barney Webber, who along with local school caretaker Ian Coates, were killed in a shocking attack in the city centre in June. The incident understandably cast a long shadow over our city, but I have been heartened by the way in which everyone at the university pulled together to support one another during this difficult time. We are also extremely grateful for the numerous messages of support we received from the local community, which truly made a difference on what was one of the saddest days any of us in higher education have ever experienced. In what I am sure will be the first of a number of events to remember and celebrate Grace and Barney, their friends and teammates in the university's cricket and hockey clubs organised a memorial cricket match for the pair shortly before the start of the new academic year, which raised a significant amount of money for the two charitable foundations that their families have established in their memories. We are incredibly proud of our students, particularly the sports teams who knew Grace and Barney the best, for their positivity and resilience.

As we head towards the festive season, may I wish you and your families a happy and peaceful Christmas and New Year from everyone at the University of Nottingham, and an exciting and prosperous 2024.



Dr Paul Greatrix
Registrar
University of Nottingham

Memorial cricket tournament raises money in memory of Grace and Barney

Teammates, friends and peers of Grace O'Malley Kumar and Barnaby Webber came together before the start of the new academic year to remember the two students at a memorial cricket tournament, which raised money for the two charitable foundations established by their families.

Grace and Barnaby – known to his friends as Barney – were killed as they walked home after a night out in June as part of a series of attacks in Nottingham city centre, which also resulted in the death of local school caretaker Ian Coates.

Hundreds flocked to the university's Highfields Sports Ground to enjoy an afternoon of cricket in the late September sunshine, watching four teams compete for a specially created memorial trophy – the University of Nottingham men's cricket team, Barney's local cricket team Bishop's Hull in Taunton, and the Grace XI and Barney XI, which were made up of close friends of the two students.

The event was organised by the men's Cricket

club, with the help of the Student's Union, the university and generous support of Ocean Nighclub, the Oddballs Foundation and University of Nottingham Men's Football Club.

Both Grace and Barney were dedicated sportspeople. Barney played cricket for both his home side Bishop's Hull and the university Men's Cricket team, while Grace was a member of the Woodford Wells Cricket Club in Essex and played hockey for both the University of Nottingham's Ladies' Hockey team and for the England U16 and U18 squads.

The event raised £4,743.80 which will be split between the Grace O'Malley-Kumar Foundation and the Barnaby Webber Foundation, both of which will be funding activities around support and inclusion for young people, in line with Grace and Barney's values.

Introducing... Kirsty Rackstraw

We are delighted to introduce Kirsty Rackstraw as the Interim Head of Community Engagement

Kirsty is returning to the Community Engagement team, (formally known as Off Campus Student Affairs), after some years working for the University's Disability Support Services. Kirsty's prior knowledge and experience of students living off-campus will be a fantastic resource not only for the team but the wider university and Nottingham community.





Castle Meadow Campus – welcoming the community

The university's new Castle Meadow Campus (CMC) proudly hosted its inaugural Community Open Day in July. More than 150 people from across the county gathered to learn more about the university's vision for the site, brought to life by passionate colleagues at the heart of the programme.

The event welcomed an array of guests, including local councillors, business professionals, and members of the public.

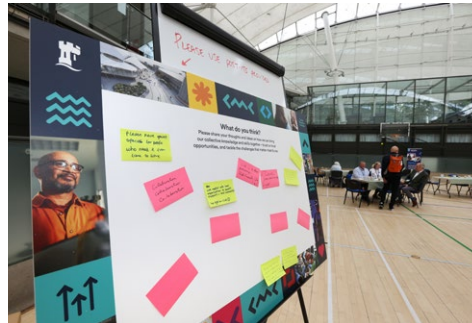
Attendees delved into a variety of exhibitions, displaying illustrations and plans for the modern facilities, resources, and endless opportunities that will feature on the campus. Participants had the chance to connect with key members of the Castle Meadow Campus team, as well as representatives from local businesses and organisations.

Led by the knowledgeable CMC team, several guided tours allowed attendees to explore the site and gain an overview of the campus's iconic design and the resources that will be available to students and the local community once fully operational.

To close the day, Professor David Park, Dean of Nottingham University Business School hosted a Q&A session, where attendees had a chance to pose their questions about the campus and its development. The expert panel included Chief Financial Officer Margaret Monckton (CFO), Registrar Paul Greatrix, and

CMC programme director Jason Phoenix with guest speakers including Browne Jacobson, Councillor David Mellen and MP Ben Bradley.

Jason Phoenix said: "Giving members of our community the opportunity to ask questions, challenge our ideas, as well as provide their own, is crucial to ensuring the success of CMC, so it was fantastic to see so many people taking an active interest in the site and joining us for this open day."



First meeting for the CMC Campus Advisory Group

Castle Meadow Campus hosted a fantastic kick off session in October with highly engaged, knowledgeable and supportive individuals that have volunteered to form the university's new Campus Advisory Group.

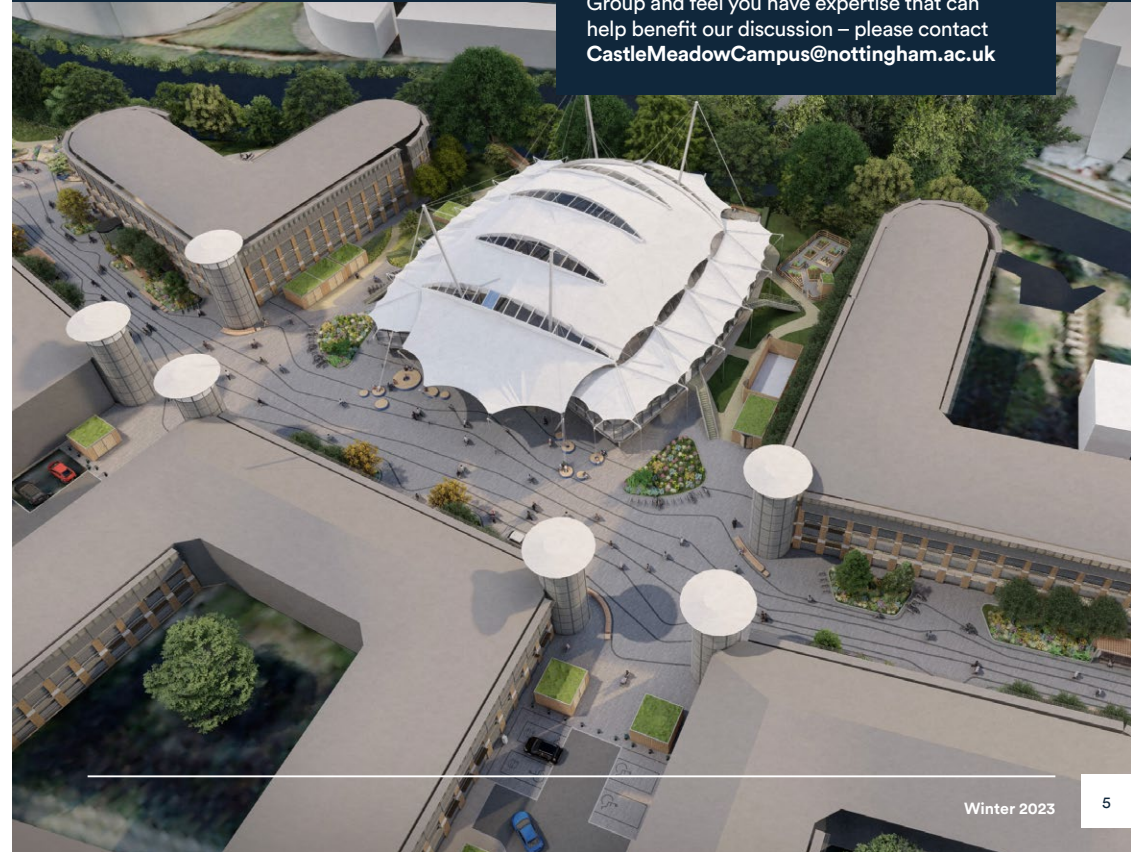
The Campus Advisory Group is set up to offer the change programme an external critique from diverse backgrounds, skill sets, opinion, and areas of expertise.

The main aim for the first session, was to ensure that the group understood what the University of Nottingham is aiming to deliver at Castle Meadow Campus, how their experience will help shape the university's plan for this estate and for retrofitting of the seven buildings on site.

Over the coming months, the group will provide challenge and valuable experience as the Castle Meadow Campus team road-test ideas, collaboratively solve problems, and validate plans for the development which is rooted in the heart of Nottingham.

At the next meeting in January, conversation will focus on the topic of innovative digital technology transformation in the workplace.

If you would like to join the Campus Advisory Group and feel you have expertise that can help benefit our discussion – please contact CastleMeadowCampus@nottingham.ac.uk



Building the Future

At its new **Castle Meadow Campus**, the university is transforming the former HMRC Nottingham base and Grade II listed buildings into the home of enterprise. Rooted in the heart of the city, the campus offers students the opportunity to grow alongside businesses based on site.

Recent weeks have seen the start of this transformation with Henry Brothers beginning construction work in October, after receiving the necessary approvals for planning and for Listed Building consent for Buildings D and F. The preparation work involves the process of isolating services and stripping out existing internal fixtures and fittings in readiness for the refurbishment.

Meanwhile, for the Central Building, the design stage is well underway, being led by GF Tomlinson. Once completed, building work can start in the new year. This is no mean feat with the complexity of the tensile roof structure.

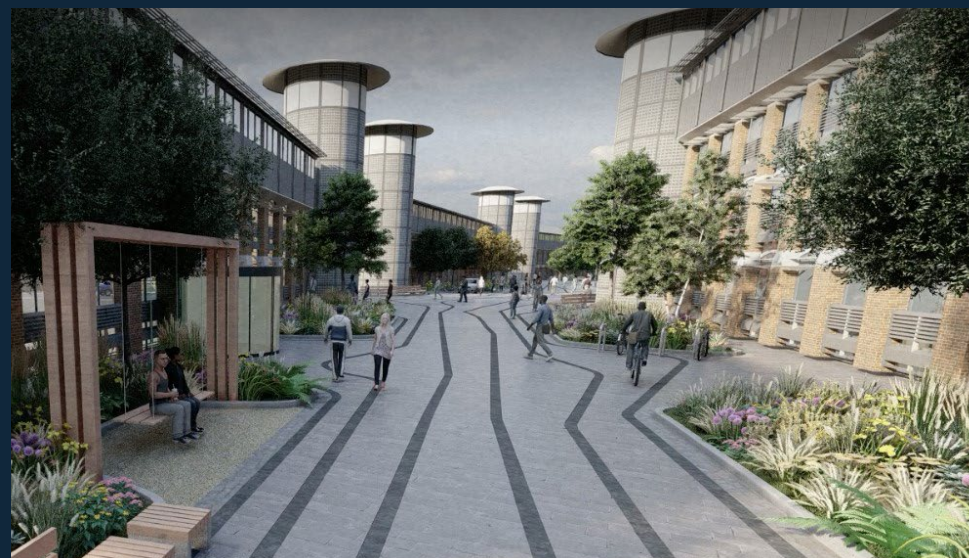
Pedestrianisation of the main boulevard and greening of open spaces on Castle Meadow Campus is all part of the complex plan to cultivate a great environment for learning, research and for the staff of the university and members of the public to enjoy.



During the landscaping planning process, the university is consulting with various stakeholders and experts in this field.

As we continue to transform the site, we will soon be in position to submit the landscaping design plans to Nottingham City Council for approval. We will move onto the design and development of Buildings A and B and start work on the Central Building.

Fencing and signage is now in place to create clear traffic pathways to help maintain safety and segregate members of the public and university from the buildings under construction. We look forward to welcoming members of the community in a year's time as we unveil the Central Building as open for business.



Connecting with CMC: Unveiling our new website

The university has recently launched our dedicated website for Castle Meadow Campus; this is your real-time portal to the latest developments and news stories from the university's newest campus. There is a wealth of information available, including detailed design and construction plans as they unfold.

You can gain access to information on the history of Castle Meadow, where to find us, latest news, and insight into what the fully functioning campus will look like and what CMC will offer to students and to the local community.

For more information, visit <https://nott.ac/CMC> or scan the QR Code:



The university is aiming for the site to be accessible to all and welcomes your feedback, if you have any questions or suggestions please email: CastleMeadowCampus@nottingham.ac.uk

Diverse opinions are sought throughout the redevelopment of this historic site into an inclusive and user-friendly campus experience for students, staff, our partners, and local people.

Renewal of the Community Engagement Ambassadors project

After a very successful pilot year, the University of Nottingham's Community Engagement team has recruited a new cohort of enthusiastic current students to be Community Engagement Ambassadors (CEAs) for the current academic year.

Last year, 12 students were employed to support community cohesion initiatives in Lenton and Radford. This year, the scheme has expanded; 18 ambassadors have been employed and they're working in new areas in addition to the previous engagement zones.

Working up to eight hours a week, the CEAs' aims remain the same: improving awareness of sustainability among students through better household recycling, improving neighbourhood safety through a variety of crime reduction campaigns, building positive and more longstanding relationships in the community between all residents, and supporting Nottingham's Carbon Neutral 2028 ambition.



A new engagement zone has been created in Dunkirk, where the Community Engagement team has previously run termly recycling and crime prevention campaigns. However, regular work in Dunkirk will enable Ambassadors to provide more support and education to the students living there and result in a positive impact on the community.

The scheme is also beginning to take shape in Beeston. The team is working closely with Broxtowe Borough Council which has provided waste management training as recycling practices differ from Nottingham City Council's system. The CEAs have been out delivering our Welcome to Beeston guides and will start engaging with student residences in the coming weeks.

Ambassadors began the academic year by taking part in multiple events. These include the Student Union's Welcome Week and Housing Fair, and a joint stall with Nottinghamshire Police in Lenton, where they capitalised on the footfall near Sainsbury's on Derby Road to increase awareness of the scheme and offer advice about living in the community.

Kirsty Rackstraw, Interim Head of Community Engagement said: "We have been really pleased with the success of our Community Engagement Ambassador project. We received some very positive feedback from partners and local residents who saw our ambassadors out working in the community. Expanding our engagement zones will extend our reach to more students and long-term residents alike which enables us to maximise the impact of the scheme going forward."





Student Living Strategy and new Police Partnership

Nottingham's two universities have formed a new partnership with Nottinghamshire Police as part of the recently launched Student Living Strategy for the city.

This partnership will focus on student safety. It will support and drive initiatives in the community to reduce crime and promote safety, and it aims to build trust and confidence in police across student, staff and resident communities

For the University of Nottingham, two dedicated police officers will work day-to-day within the Student Living Community Engagement Team. A Police Community Support Officer (PCSO), Paula Hipkiss, and a Police Constable (PC), Nick Lewis, have been hand-picked by university, police and Students' Union representatives.

Both have a wealth of knowledge and experience in policing, with Paula joining Nottinghamshire Police in 1990 and Nick joining in 2010. Paula has been a PCSO based in Beeston for 14 years, while Nick has spent the last nine years in Response Policing based in Nottingham City Centre.

Paula said: "Having been based in Beeston, I have worked with many students off campus. I am eager to engage with staff and students on the various campuses and become a familiar and approachable face. During my 34 years of policing, I have taken many opportunities to improve my knowledge and skills. I am looking forward to this new opportunity to help students feel happy and safe during their university experience."

In 2018 Paula scooped a Nottinghamshire Police PCSO of the Year award in recognition of her outstanding contribution

to neighbourhood policing and in 2017 received a Chief Constable's Commendation for bravery and rescue of a young boy.

You can find Paula's image on a portrait at the bandstand in Beeston Square, representing the contribution made by 'blue light' emergency services workers.

Nick said: "After many years working on the Response Unit in Nottingham City Centre and engaging with students on an almost daily basis, I am extremely happy to be a part of the University Police team and hopeful for the future of the project. I have a lot of experience engaging with students participating in the night-time economy and I have supported them in instances when they have unfortunately been victims of crime. I am now looking forward to being that familiar face that students frequently see and can get to know and trust."

Nick is known as a hero officer and was chosen as a winner of the PC Ged Walker Award at this year's Nottinghamshire Police Force Awards. In 2022, Nick was honoured at the national Police Bravery Awards in London after he showed outstanding courage in two separate incidents.

Vikki Welch, Associate Director Student Living, said: "We are honoured to have this calibre of policing joining the University of Nottingham and their support to our communities will be invaluable."



The Student Living Strategy was officially launched, following public consultation earlier this year, and marks the first time the University of Nottingham, Nottingham Trent University and Nottingham City Council have made a formal commitment to work proactively together on shared priorities for housing and local services, as well as maximising the benefits that students bring to Nottingham.

University Registrar Dr Paul Greatrix said: "This strategy will offer a new and positive partnership approach to dealing with challenges around ensuring the availability of good quality, appropriate housing for all Nottingham residents, building vibrant, positive communities and ensuring that we are capitalising on the talent and potential of the people who come to study and live in our city."

The Student Living Strategy sets out three main priorities:

- Improving the quality, safety, affordability and location of student accommodation, and encouraging a better balance of student housing choice across the city.
- Encouraging neighbourliness, where students contribute to creating a clean, attractive and sustainable environment, and tackling the impact of waste and noise.
- Increasing community cohesion, ensuring students are valued members of their communities and improving graduate retention in the city.

Canning Circus Lights Up

On Tuesday 21st November, Canning Circus was lit up in the annual evening of festive fun. The much-loved feature Christmas tree was lit up on the junction of Derby, Ilkeston and Alfreton roads with attendance from residents of Radford, Lenton and Wollaton East, and Castle wards.

The event was filled with yuletide spirit as Christmas Carols were sung by primary school children from several local schools. The children were rewarded for their wonderful singing with delicious festive cupcakes made by the University of Nottingham's baking society, CakeSoc, who provided sweet treats at the Switch-On for the second year in a row.



Nine University of Nottingham Community Engagement Ambassadors attended and were on hand to help support the smooth running of the wonderful City Council event.

The evening was a happy start to the celebrations of the upcoming month, and a lovely display of the Christmas spirit between all in Nottingham.

Like previous years, the Switch-On event was part funded by the University of Nottingham's Community Chest Fund, along with a matching contribution from Nottingham Trent University.

If you have any ideas for a local event that may benefit from Community Chest Funding, please get in touch: CommunityEngagement@Nottingham.ac.uk



University re-opens Winter Shelter on campus to accommodate rough sleepers

This year, the university is once again working with local homelessness charity, Emmanuel House, to re-open its Winter Shelter on University Park campus.

Since October, the charity has been offering short-term emergency accommodation for up to 27 people every night for 26 weeks (until April 2024).

24-hour support is being provided in a university building, ensuring there are fewer people sleeping on the streets of Nottingham during the coldest months of the year.

Ashley Roberts, Head of Campus Services at the university, is leading the project. He said: "This is the third year we've hosted the Winter Shelter on campus and as ever it's great to be able to partner with Emmanuel House on such a worthwhile initiative. The services that the charity provides are invaluable and we're pleased to be able to support our local community in any way we can."

The Winter Shelter meets people's basic human needs – guests have access to washing facilities, three nutritious meals a day and access to continuous and consistent support. This 24-hour wrap-around care is essential for helping people out of homelessness as it allows support work to continue during the day as guests are helped to find work and long-term accommodation and access other services.

Last year's Winter Shelter, which was open between 17 October 2022 and 10 April 2023, provided 3,922 nights' protection for a total of 107 people who would otherwise have been rough sleeping. Emmanuel House supported

58 of these people into accommodation.

Denis Tully, CEO at Emmanuel House, said: "The Winter Shelter is an integral service in the additional winter provision for people vulnerable to rough sleeping in Nottingham. We are aware that the cost of living and increase in the cost of accommodation are contributing to a rise in the number of people presenting as homeless. We are hopeful that based on last year's figures we will be able to support more than fifty percent of people who used the shelter into accommodation solutions."

Could you help to volunteer?

Emmanuel House is currently looking for volunteers to support the Winter Shelter. The volunteer sessions involve a range of activities, including breakfast service, cooking and serving an evening meal, and activities. Shifts are available Monday – Sunday from morning to evening.

The Winter Shelter is also looking for full-time and part-time support staff. Sessional or contract work is available.

If you would like to donate non-perishable food, sleeping bags or clothes to the Winter Shelter, all details, plus information on volunteering, job vacancies and fundraising, can be found on the website:

www.emmanuelhouse.org.uk/winter-shelter-2324/

Nottingham Neighbourhood Award

Three University of Nottingham students came to the aid of an elderly Lenton resident who fell on Derby Road late last Spring. The lady unfortunately sustained a head injury as a result of her fall. The three students, who did not know each other, all stopped and helped her.

The students sought medical advice on the phone and established that an ambulance would be a considerable wait. One of the students then collected their car and drove the lady to Queen's Medical Centre and waited until she was seen.

Community Engagement staff who were working in the area that afternoon came across the injured resident and the students who at that point were on the phone with the emergency services and planning the next steps. After witnessing the care of the students and how they aided a vulnerable member of their community, the Community Engagement team nominated the students to receive a Nottingham Neighbourhood Award. They received their award at the start of this term in recognition of their actions.

Thankfully, the elderly lady recovered well at home. Speaking about the students' assistance, she said: "I've told lots of people about their great help. I was very grateful to them for supporting me."

If you know an individual student, student group, society or student household who have made a positive difference in your neighbourhood, you can nominate them for a Nottingham Neighbourhood Award on our website: nottingham.ac.uk/yourcommunity



Internal bin offer for Nottingham City HMOs

Last year, a Lenton landlord agreed to take part in the Community Engagement team's pilot internal bin project. University branded internal bins were installed in 20 houses of multiple occupancy (HMOs) on one road. The swing bins were the corresponding colours of Nottingham City Councils' waste and recycling bins and stickered with the university's 'go! Recycle Right' branding which depicts what can and can't be recycled.

As the indoor facilities are usually the source of contamination, the internal bins tested the theory that waste being separated correctly inside the house results in better recycling. A survey was sent to the residents who received them and 77% said that the internal bins have significantly or moderately improved their household recycling. After the installation of the bins, waste audits were carried out on the road. They found the recycling bins of those involved in the trial contained better recycling than houses not involved.

There is now an opportunity for all Nottingham City landlords to purchase these university branded internal bins in the online store. These bins meet the specification of new licensing conditions that specify an HMO must offer two internal 50litre kitchen bins. The bins have the useful go! Recycle Right stickers which aim to educate students about Nottingham City Council's waste management practices.

The QR code will take you through to the online store.





**University of
Nottingham**

UK | CHINA | MALAYSIA

CHRISTMAS SHOW: THE BOY WHO CRIED WOLF

Lakeside Arts, University Park Campus

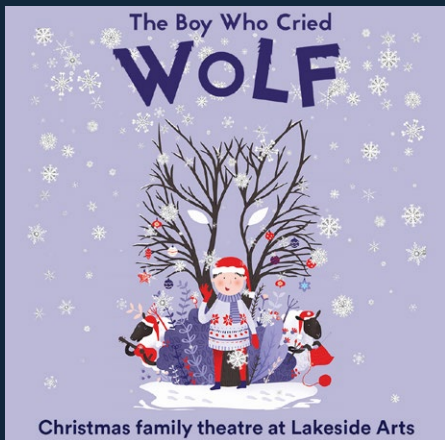
Saturday 09 December - Sunday 31 December, Various Times

£10.50-£12

1 hour (no interval). Suitable for ages 3+

Inspired by the famous Aesop fable this warming wintry tale sees a gifted group of actor-musicians become a whole host of hilarious characters, including the baaarmy sheep, and perhaps even a scary wolf or two.

See the show, then visit the Wallner Gallery to see the interactive installation inspired by The Boy Who Cried Wolf, created by 11 local schools across Nottingham, and featuring baaarmy lifesized sheep, knitted jumpers and recycled crafts to create a little sprinkle of Christmas and winter magic.



Stay in touch

- nottingham.ac.uk
- communityengagement@nottingham.ac.uk
- +44 (0)115 951 5151
- [UniofNottingham](https://www.facebook.com/UniofNottingham)
- [@UoN_Off_Campus](https://twitter.com/UoN_Off_Campus)
- [@uniofnottingham](https://www.instagram.com/uniofnottingham)

REIMAG(IN)ING THE VICTORIANS

Until Sunday 7 January 2024

Djanogly Gallery, Lakeside Arts

From taxidermy and photography to forgotten lives and colonial histories, this exhibition explores how leading contemporary artists reimagine the Victorians in their work. By exploring how artists creatively respond to the 19th century, the exhibition asks why its legacies still matter today.

For more information and bookings visit lakeside.org.uk



Dates for the diary:

Winter Graduation: Tuesday 12 December - Friday 15 December

End of term: Friday 15 December

Spring term begins: Monday 15 January 2024

**This publication is available in alternative formats:
+44 (0)115 951 5559**

University of Nottingham has made every effort to ensure that the information in this newsletter was accurate when published. Please note, however, that the nature of the content means that it is subject to change from time to time, and you should therefore consider the information to be guiding rather than definitive.

© University of Nottingham 2023. All rights reserved.
Printed March 2023.