

# DID YOU KNOW?

**Secondary school students in low income communities do not have access to quality science practical trainings.**



*Meanwhile...*

**Science practicals make up 30% of final examination grades in senior secondary school.**

**To solve this problem,  
The STEM Belle has launched...**



# **the Lab Equipment Drive**

**Our objective:**

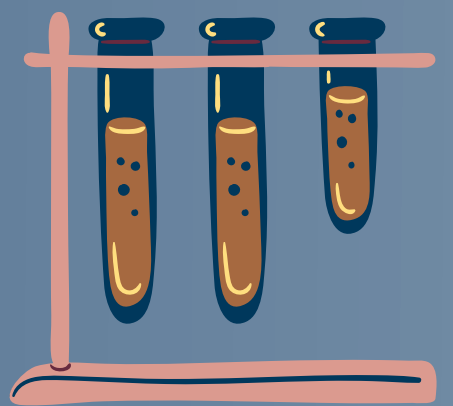
**Recycle science  
equipment from UoN  
laboratories, for science  
practical lessons in low  
income community  
schools in Nigeria.**

# Modus Operandi of The Lab Equipment Drive



Collect science equipment no longer needed from across UoN labs.

Organise and prepare collected equipment for shipping.



Ship lab equipment to schools in need.

Set up labs in schools and train the local science teachers on how to use equipment.



Monitor, evaluate and track impact.



# HOW TO BE A PART

1.

## DONATE

● DON'T DUMP ●

Donate lab equipment, computers and digital screens no longer needed in your labs.

2.



Donate money to support towards shipping costs.

3.



Spread the word about our work and this drive.

We are social –  
@thestembelle

4.



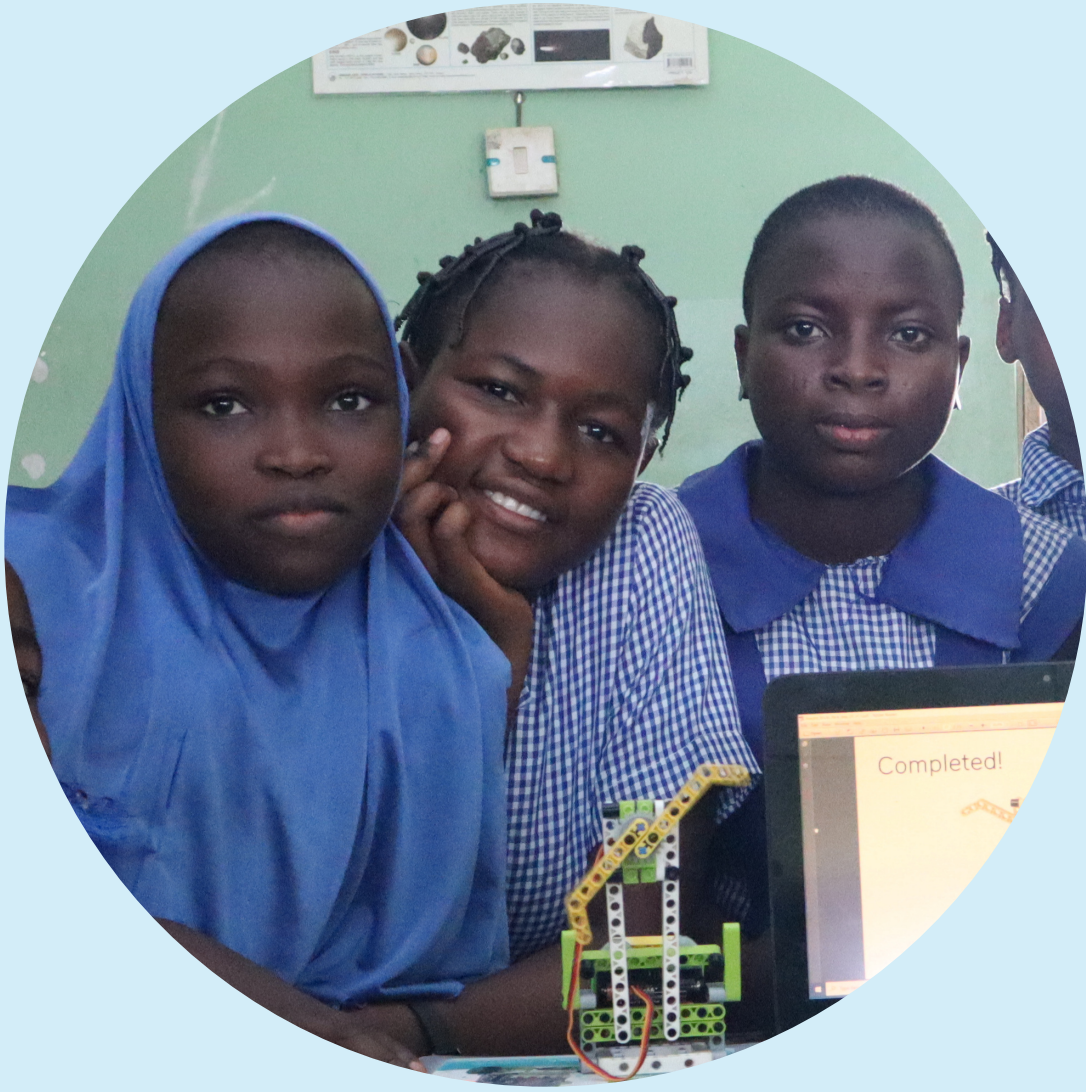
Subscribe to our newsletter to volunteer and remain updated on our work to get more girls into STEM.

Scan to go to our website





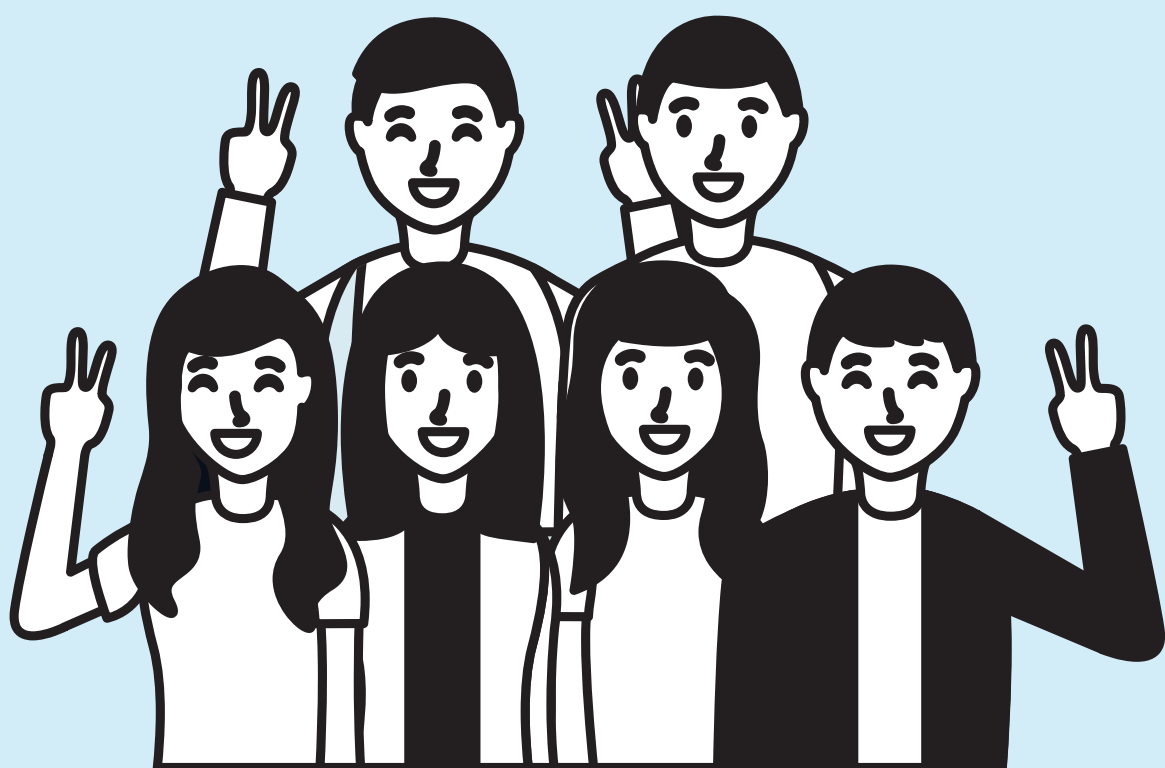
# Who benefits?



**School students in economically disadvantaged communities, most especially girls.**  
**#GirlsinSTEM**

**The environment – We are reducing materials that end up in land fills.**

**#Recycle4development**



**Everyone who participates, contributes towards getting more girls into STEM and also towards saving the climate.**

**#Sustainability4Change**



## A cartoon illustration of a woman with dark, curly hair wearing a yellow hard hat. She is dressed in a white, off-the-shoulder dress with blue polka dots and a blue sash. She is also wearing blue high heels and holding a wrench in her right hand and a pencil in her left hand. The background is a solid blue color.

[illegible]

**Doreen Anene - doreen.anene@nottingham.ac.uk**  
**07340799773**