

November 2006

Recycling rates rising

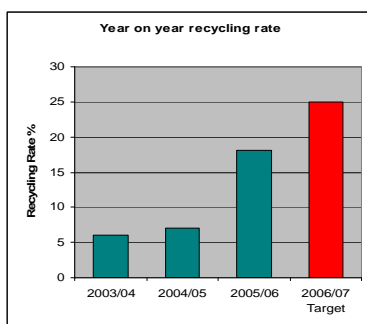
Contents:

Structure	2
Green Flag Award	3
Energy Report	4
Conference	5
Website	6

Over this last year we have expanded the recycling provision and as a result we have seen an increase in our recycling



do not yet have an office paper recycling bin please contact environment@nottingham.ac.uk to request one.



rates, to just over 18%.

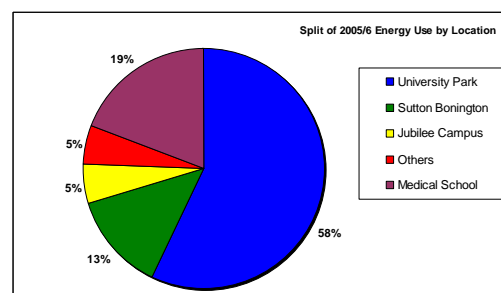
We are currently working to expand the numbers of waste streams that can be recycled and have set ourselves a target of 25% by September 2007. If you



Energy use down by 3%

Our energy consumption in buildings reduced by 3% last year - and the colder weather should have led to a 2.4% increase. There was a significant reduction of 7% in fossil fuels, although electricity consumption continued to rise. Energy used per square metre of

floor area fell 6.3%, and energy usage per student was down 6.7% this year.



Energy Consumption	MWh 2003/4	MWh 2004/5	MWh 2005/6	Change '05/6 to '04/5
University Park	109,116	116,269	109,088	-6%
Sutton Bonington	26,682	26,706	25,818	-3%
Jubilee Campus	9,333	10,396	9,939	-4%
Others	5,886	10,404	10,544	1%
Medical School	31,585	34,150	36,516	7%
Total	182,602	197,924	191,905	-3%

Visit the Estate
Office website at:

www.nottingham.ac.uk/estate/



Fume cupboard campaign helps cut gas usage

If you look up at the roofs of our science buildings, you will see rows of grey plastic chimneys. These are fume cupboard extracts and are linked

Running a large fume cupboard all year can use up to £3,000 of energy, so the Estate Office has been working with schools to raise awareness of the

issue. It is estimated that over £1 million per annum is spent on fume cupboard running costs.

Major successes have been achieved working along with staff in Chemistry and the Boots Pharmaceutical Science building, where energy use has already been cut by around 20% in some labs.

'A single fume cupboard can consume £3,000 worth of energy in a year.'



back to fume cupboards for safety purposes. The fans in these fume cupboards can use large amounts of electricity, if not properly controlled. Large volumes of heated or cooled air are also lost from the building.



Environment Committee

Earlier this year the University's Environment Committee was reconstituted, and met in its new form for the first time in October 2006.

Topics discussed included a new landscape report publication, carbon footprinting, a five-year Landscape Strategy for University Park and awareness raising across the University.

Chairman:-

Prof David Greenaway

Members of the Committee:-

Mr Chris Jagger

Mr Tim Rudge

Dr John Sutherland

Ms Sophie Day

Dr Polly Arnold

Ms Karen Atwood

Ms Rachel Greatrix

Prof Roy Haines Young

Ms Lynne Tucker

Prof Jeremy Colls

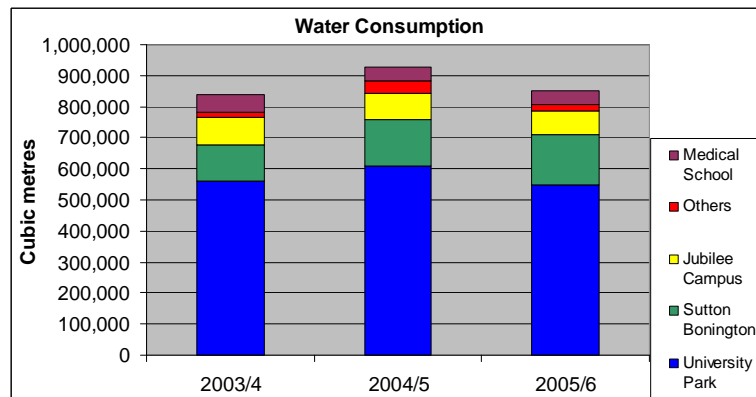
Mr Martin Suthers

Mr Gavin Scott



Water consumption down 8%

There was an overall reduction of 8% in water usage, attributed largely to an investment of twenty thousand pounds in urinal controls which were installed between December 2005 and February 2006. These devices incorporate a PIR detector and timer and prevent urinals flushing continually when there is no-one around.



Did you know?

We use over 500,000 gallons of water every single day.

What can you do to save water?

Water Consumption	cubic m. 2003/4	cubic m. 2004/5	cubic m. 2005/6	Change '05/6 to '04/5
University Park	560,942	608,444	546,497	-10%
Sutton Bonington	117,749	148,732	162,052	9%
Jubilee Campus	86,762	86,869	76,534	-12%
Others	16,938	37,975	22,987	-39%
Medical School	54,352	43,570	43,118	-1%
Total	836,743	925,590	851,188	-8%

Awards continue for exceptional grounds

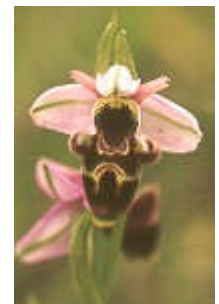
University Park continues to win awards for its landscape - over this last

year we have won our Fourth green flag and remain the only University

Campus to have done so.

This year we have also seen a dramatic change to the landscape at King's Meadow Campus. Considerable investment has been made in the landscape at King's Meadow, including the newly completed courtyard garden with seats and three pools (see left).

The mowing regime to some areas has been changed to encourage the development of flowering meadows. In just one season numerous wild flowers have appeared including bee orchids.



Bee Orchid

University beats emissions target

University Park is included in the European Union Emissions Trading Scheme for carbon dioxide.

As such we are set a target for the amount of carbon dioxide we can emit from the campus from our chimneys. For the calendar year of 2005 our target was 13,569

Tonnes (fossil fuels only).

Actual emissions achieved for the calendar year of 2005 were verified by Defra as 12,555 Tonnes.

The table below shows all of our emissions for the period 1st August 2005 to 31st July 2006.

CO2 Emissions	Tonnes	Tonnes	Tonnes
2005/2006	Electricity	Fossil Fuels	Total
University Park	16,125	12,294	28,419
Sutton Bonington	3,806	2,915	6,721
Jubilee Campus	1,785	955	2,740
Others	1,422	1,218	2,640
Medical School	3,510	4,999	8,509
Total	26,648	22,382	49,030

Travel Partnership

The new No 34 Uni-link Service saw 15,000 trips during it's first two weeks



Installed an electronic Travel Planning kiosk in the Portland Building

Secured the new **No. 34 Uni-link** service, a 12 minute branded direct link between University Park and the City centre.

Improved the No.50 route, which now takes in St Peter's Court, and improved the frequency of the No 160 which serves Lenton Lane (King's Meadow Campus)

Arranged Free Travel for Staff and Students on the No.50 route on Production of a University Card

Opened the new cycle parking facility in the Archaeology and Classics building at University Park

Earlier this year we undertook a Travel Survey to establish how people travel to work and what measures would encourage them to switch to more sustainable modes.

Unsurprisingly more than 50% of staff traveled to work by car. The information from this survey has been of great value and is currently

being developed into a summary document outlining the results and the measures that we will be adopting to help to increase transport choice.

We have been working in partnership with Nottingham City Transport and Nottingham City Council to improve public transport in and around the University. To date we have:

Interested in Landscape, Travel or Recycling?

Supporting the work of the Environment Committee there are a number of topic based subgroups.

We are currently looking for people who have an interest in the areas of Landscape, Travel or

Recycling to join one of these groups. These groups meet approximately once a quarter and raise issues of concern, brain storm issues and put forward proposals to the Environment Committee.

If you are interested in helping the environment and finding out more about these groups please email environment@nottingham.ac.uk and one of the team will get back to you.



2005/6 Energy Report

The full report for 2005/6 has been produced and can be accessed from the website (see p.6). The report shows that gas consumption reduced by 7%, but electricity increased by 4%.

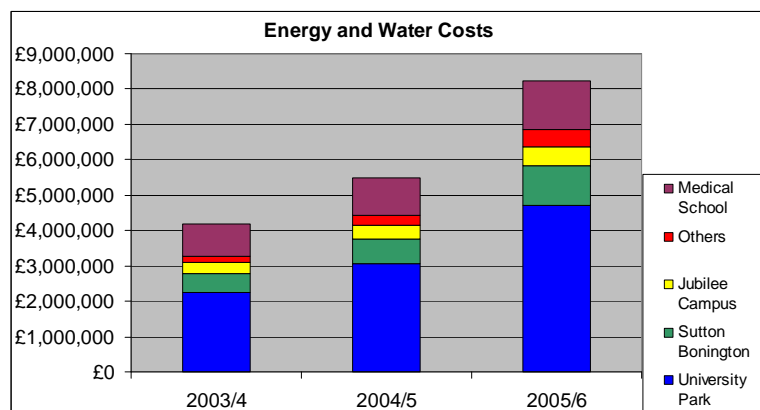
Efforts to reduce electricity consumption this year included the installation of 400 automatic light switches (see right) that sense when a room is unoccupied and switch the lights off after a set time.



Did you know?

We spent an average of £575 on electricity every hour of every day in 2005/6.

Breakdown of 2005/6 utility costs

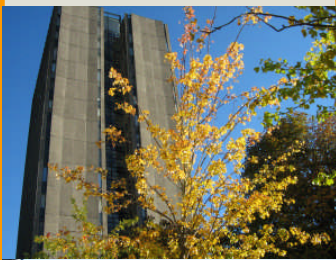


UK energy prices have more than doubled in the last two years, and the University has been similarly affected. For the 2005/6 year our utility costs increased by 51%, to £8.2 million, excluding taxes. This followed a substantial rise of 31% in 2004/5.

Energy and Water Costs				
	Electricity	Fossil Fuels	Water	Total
University Park	£ 2,522,336	£ 1,507,478	£ 667,544	£ 4,697,358
Sutton Bonington	£ 614,473	£ 349,059	£ 186,052	£ 1,149,584
Jubilee Campus	£ 300,457	£ 116,892	£ 113,003	£ 530,352
Others	£ 286,388	£ 148,485	£ 51,225	£ 486,098
Medical School	£ 463,000	£ 849,032	£ 66,200	£ 1,378,232
Total	£ 4,186,654	£ 2,970,946	£ 1,084,024	£ 8,241,624

Figures in the table above exclude taxes





Bright Ideas!

If you have any ideas for energy saving then let us know.

Email us at:

Gavin.Scott@nottingham.ac.uk

(environment)

Tim.Rudge@nottingham.ac.uk

(energy and water)

Or write to us at:

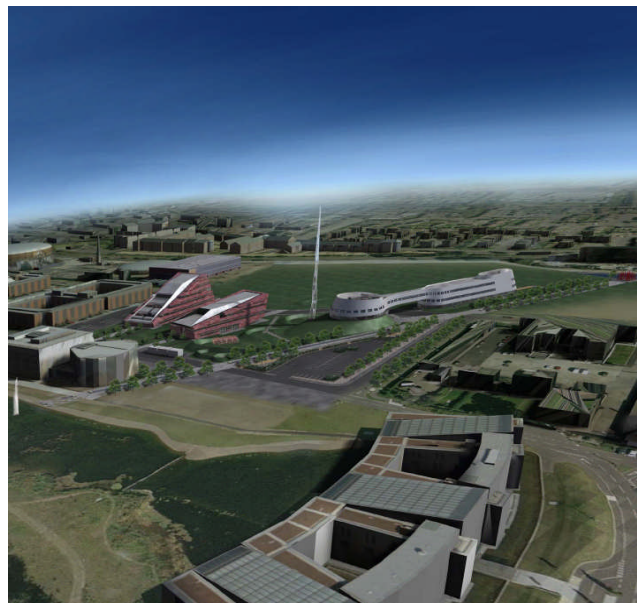
The Environment Manager,
Estate Office
University Park
Nottingham
NG7 2RD

Jubilee Campus expansion continues sustainable ethos

The University brief for the development of the Jubilee Campus extension has placed a considerable emphasis on sustainable design including the use of renewable energy sources.

The design has taken into account items such as the site layout and has projected energy demand profiles to help maximize the development's potential for sustainable design and energy conservation.

A geothermal heating and cooling system is being considered along with the use of high thermal mass and high performance facades. The ventilation strategy will feature the use of night time cooling to ensure further reductions in CO₂



emissions.

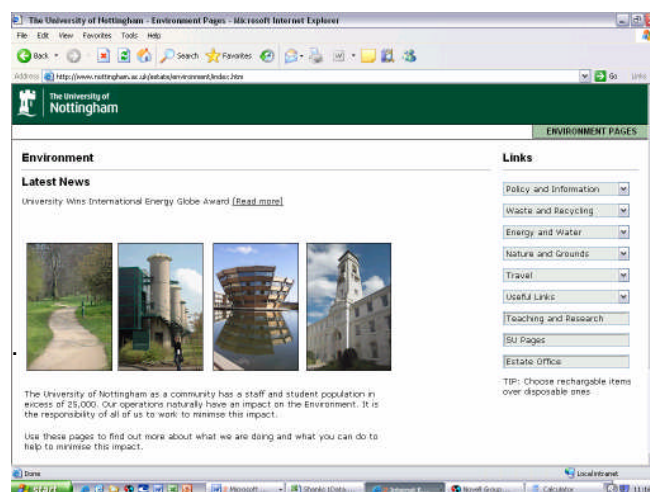
Further detail on the project will be available on the estate office website as the project progresses.

Environment on the web

Do you want to find out more about the University and the Environment?

If so take a look at www.nottingham.ac.uk/estate/environment.

These pages are designed to be a single resource to find out information on environmental issues here at The University of Nottingham.



Keep your eyes on these as they will be regularly updated.