



University of
Nottingham

UK | CHINA | MALAYSIA

University of Nottingham

Open days 2022

9.30am–4.30pm

Saturday 10 September

Contents

- 3 What should I do on the day?
- 4 Getting around on the day
- 6 Accommodation
- 8 Campus tours
- 11 Your Students' Union
- 12 Food and drink
- 17 Talks and activities
- 18 Subject stands
- 20 University Park Campus - General talks and activities
- 25 STEM at UoN
- 26 University Park Campus - Subject talks and activities
- 33 Jubilee Campus - General talks and activities
- 34 Jubilee Campus - Subject talks and activities
- 35 Sutton Bonington Campus - General talks and activities
- 36 Sutton Bonington Campus - Subject talks and activities

For open day enquiries
or to change your booking:



+44 (0)115 951 5559



opendays@nottingham.ac.uk



nottingham.ac.uk/opendays

For lost property, or first aid
on the day, visit:

Events office, B02,
Performing Arts studio, Monica
Partridge Building (no. 62 on map),
University Park Campus

Accessible minibus:

Available from 8.30am-5pm
on University Park Campus



+44 (0)7813 459 196

If you need any assistance during
the open day, please find one
of our friendly helpers in a blue
t-shirt.

Photography and videography will be taking place at this event.
If you do not wish to appear in photographs or videos, please advise staff
at Arrival and Information Points.



Stay connected



[uniofnottingham](https://www.instagram.com/uniofnottingham)



[uniofnottingham](https://www.tiktok.com/@uniofnottingham)



[UniofNottingham](https://www.facebook.com/UniofNottingham)



[UniofNottingham](https://twitter.com/UniofNottingham)

#WeAreUoN

What should I do on the day?

1 Take note of your car park
We have large campuses, so make a note of where you parked. Then head to the Arrival and Information Points to pick up a micro prospectus.

2 Go to your subject activities
Learn about the course and your career opportunities. Chat to academics and current students and pick up your subject tags. More information can be found on pages 17-36.

4 Go on a campus tour
Get a feel for the university and explore the campuses (see page 8).

3 Visit accommodation
We have catered and self-catered accommodation sites open for viewing (see general activities list per campus). For general accommodation information, see page 6.

5 Drop into the Information Fair
Visit the Great Hall in the Trent Building to find out about sports, careers, finance, studying abroad and more.

6 Explore our Students' Union
Take a self-guided tour around the Portland Building to see what student life is all about (see page 11).

8 Visit our sports facilities
We have sports centres on all our campuses open to view (see activities list per campus).

7 Grab a bite to eat
Get a taste of Nottingham living at one of the catering outlets in and around our Students' Union. Find all food and drink outlets on pages 12-16.

Enjoy your day

We hope you have a great day exploring the University of Nottingham.

Have a safe trip home.

Getting around on the day



Use our **free campus shuttle buses**

Getting around our campuses

From	To	Bus colour code	Departure times	Journey time
All buses go both ways between locations				
University Park Campus (East Drive)	Jubilee Campus (The Exchange)	Purple	Every 15 minutes: 8am–5.30pm (starting at University Park Campus at 8am)	10 minutes
University Park Campus (East Drive)	Sutton Bonington Campus	Yellow	Every 45 minutes: 8.45am–5.45pm	30 minutes
University Park Campus (loop)	Various (see Visitor Map for stops)	Pink	Every 15 minutes: 8am–5.30pm	20 minute round-trip
The University Park Campus loop bus stops are shown on the Visitor Map.			Accessible minibus: Call our team on the day on 07813 459 196 to request the accessible minibus. It runs on University Park Campus from 8.30am to 5pm.	

Visiting self-catered accommodation

From	To	Bus colour code	Departure times	Journey time
All buses go both ways between locations				
University Park Campus (East Drive)	The Vantage	Red	Leaving from East Drive: 9.30am, 10.15am, 11am, 11.45am, 12.30pm, 1.15pm, 2pm, 2.45pm, 3.30pm (last bus departs The Vantage to return to University Park at 4.30pm)	45 minute round-trip
	Raleigh Park		Leaving from East Drive: 9.30am, 10am, 10.30am, 11am, 11.30am, 12 noon, 12.30pm, 1pm, 1.30pm, 2pm, 2.30pm, 3pm, 3.30pm, 4pm (the last bus departs Raleigh Park to return to University Park at 4.45pm)	30 minute round-trip




Visiting the city


Departs and returns to	Description	Journey time
'University of Nottingham' tram stop by South entrance	If you want to take a look around for yourself, the tram runs from outside University Park Campus into the city centre and to Nottingham railway station	Roughly 15 minutes

Getting home

From	To	Bus colour code	Departure times	Journey time
All buses go both ways between locations				
University Park Campus (East Drive)	Nottingham railway station	Blue	Every 15 minutes: 8am–5.30pm (Starting at the station at 8am)	15 minutes
Jubilee Campus (The Exchange)	Nottingham railway station	Green	Every 30 minutes: 8am–5pm (Starting at the station at 8am)	15 minutes
Sutton Bonington Campus	Loughborough railway station	Orange	From the station: 8.30am, 9.10am, 10.10am, 11.10am, 12.10pm From Sutton Bonington: 1pm, 1.30pm, 2.20pm, 3.10pm, 3.50pm, 4.30pm, 5pm, 5.40pm	15 minutes

Taxis

 Uber: Download the Uber app

 DG Cars: Download the DG Cars app or call 0115 9500 500

For lost property or first aid on the day, visit:
Events office, B02, Performing Arts studio,
Monica Partridge Building (no. 62 on map),
University Park Campus



Accommodation

Your halls, your options

Which location is your perfect match?

Across all three campuses, we have accommodation options either on campus, or in the surrounding area.

When making your decision, think about which campus you will be studying at, whether you want catered or self-catered accommodation, and then narrow down your search by taking the time to visit the different halls.

You might want to live closer to the sports centre, nearer to the buildings in which you will study, or nearer the city centre. With a host of excellent options, you can choose your perfect location.

Which room is right for you?

There are lots of different room types to choose from – whatever your budget and preferences, we'll help you find a room that suits you.

We have a mix of shared bathroom facilities, en-suites, and studios. We also have a large selection of room types with either single or three-quarter beds. All self-catered rooms within flats have a shared kitchen and dining area as well.

For something more private you can opt for a studio – a completely self-contained study bedroom with kitchen facilities and a separate en-suite.

For more information please see our website: nottingham.ac.uk/accommodation

Much more than a room

Our Student Service Centres provide our students with guidance, advice and a range of support services such as finance, wellbeing, counselling, and more. You can always see them if you need any help or advice.

All accommodation sites have a security presence 24-hours a day so you can sleep soundly knowing that if you ever need help, they're only a phone call away.

On top of that, all halls have a management team available to fulfill your house-keeping, maintenance and delivery needs.

Contract information and fees

If you choose to live in catered halls then you have the choice of a 31-week or 39-week contract. If you would like to be self-catered then we have 44-week contracts for undergraduates and 51-week contracts for postgraduates.

The price of your accommodation will vary depending on your preferred type of catering, room type, and contract length. For a full breakdown, please visit our website: nottingham.ac.uk/accommodation

Length of contract	Meals included	Annual cost	Vacation terms
31-weeks	Yes - catered	From £6,310.52	Move out during vacations
39-weeks	Yes - catered	From £7,644.49	Can stay during vacations
44-weeks Undergraduate only	No - self-catered	From £4,906.00	Can stay during vacations and part of summer
51-weeks Postgraduate only	No - self-catered	From £6,749.97	Full year

* All prices are representative for 2022/23.

You're guaranteed a room in university-arranged accommodation for your first year*

You must firmly accept your offer to study with us, and apply by the deadline.

* Please see full terms and conditions at: nottingham.ac.uk/accommodation

* Veterinary Medicine students should check our website for additional information.

Discover your new home

There's no need to sign up for an accommodation tour – most of our undergraduate halls on University Park and Jubilee Campuses are open for viewing, so just turn up to visit at a time that suits you, between 10am and 5pm, with last viewings at 4.30pm. The show flat at Sutton Bonington will be open from 9.30am–5.30pm. Staff and students will be there when you arrive to answer any questions, and tell you more about life in halls. There's also a stand at the Information Fair.

Please see the Visitor Map for locations of all our catered, on-campus halls. Location details of the self-catered accommodation open on the day can be found on page 20.

Our halls of residence are so much more than just a place to live.

They're the perfect base for exploring Nottingham – which is why we prioritise your health and happiness, safety and security.



Campus tours

Explore our award-winning campuses, find the secret spots, and look for the innovative architecture.

Pick up a Visitor Map for a detailed, accurate map.

University Park Campus

University Park Campus tour

See the award-winning campus with a guided tour from a current student, lasting around 45 minutes. There are two tour routes of University Park Campus, and they are split into subject areas.

For arts, humanities, law and social sciences, the tours will depart from in front of the Hallward Library.

For science, engineering, medicine, health care and health sciences, tours will depart from outside George Green Library.



David Ross Sports Village



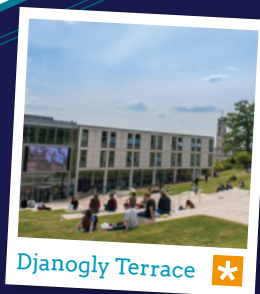
Walled Garden



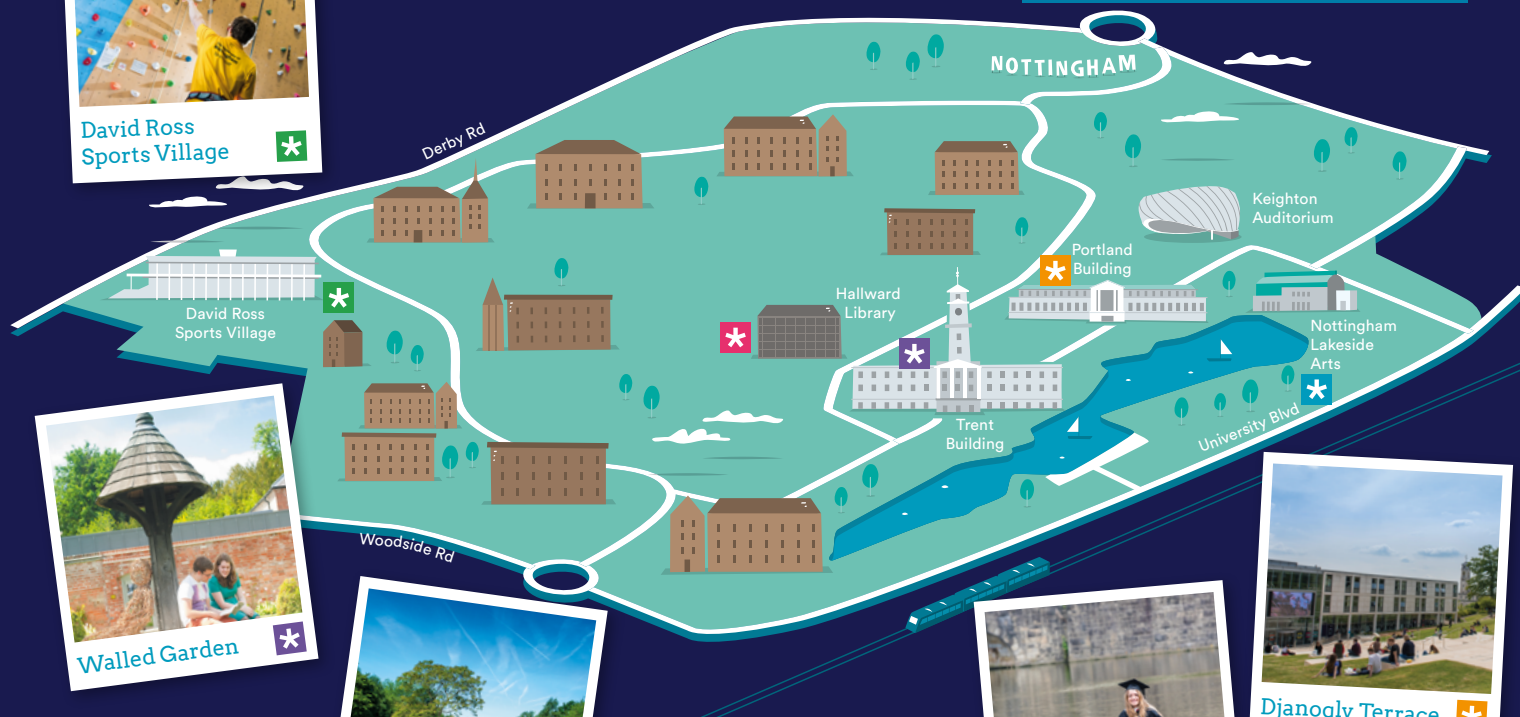
Millennium Garden



Crazy golf and boating by the lake



Djanogly Terrace



Jubilee Campus

Jubilee Campus tour

Take a self-guided tour around the fantastic architecture on Jubilee Campus. Be sure to check out the Aspire sculpture and the GlaxoSmithKline Carbon Neutral Laboratory.



Djanogly Learning Resource Centre



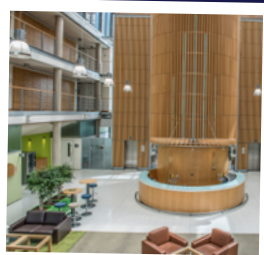
YANG Fujia Building



Aspire sculpture



Wollaton Rd



De Vere Jubilee Conference Centre



GlaxoSmithKline Carbon Neutral Laboratory



Advanced Manufacturing Building



Derby Rd

Sutton Bonington Campus

Sutton Bonington Campus tour

Explore the campus, sports centre, and accommodation with a guided campus tour from a current student. Please check your subject programme for tour times and start locations.





Your Students' Union

The Portland Building on University Park Campus is the home of your Students' Union... so come and say hello!



Student Life

Visit the Welcome Zone in the Portland Building, and discover more about student life in Nottingham.

Drop in to the Students' Union to find out about student groups and volunteering opportunities. Take a self-guided tour of the Portland Building to see all the facilities, services and spaces just for you.

10am–4pm Welcome Zone, Portland Building, University Park Campus



Your Students' Union is at the heart of student life. We're here to make sure you have the best possible University experience - from the day you accept your place, to the day you graduate. **Welcome to your Students' Union!**

We're an inspiring, vibrant community run by you, for you. And because we're independent from the University, we represent you, defend your interests, and fight for the changes you want to see.

Visit us at our home in the Portland Building, where you'll find our shops, services, and venues. It's the place to go whether you need information and advice, or just a post lecture pick me up. We'll tell you how you can get involved with over 200 student groups, student-run services and volunteering opportunities, and help you make a difference in your student community.

Keep up to date with all the latest news and events:

su.nottingham.ac.uk 0115 846 8800

 **@UoNSU**  **UofNSU**

Food and drink on the day

Our campuses have food outlets to suit a variety of tastes and dietary needs such as gluten-free, halal, vegan, and vegetarian.

Here are a few of our top picks for the Open Day:

- **Street food** – a range of local food stalls
- **Portland 56** – fresh pizza and gourmet burgers
- **Café Terrazzo** – light bites, treats and desserts
- **Item 7** – African fusion cuisine
- **And much more!**



See the full list of food and drink vendors on the following pages or check the Visitor Map available on the day.

Bring your own travel cup and water bottle

Save 20p on all hot drinks when you use your own reusable cup. We charge a 20p levy on disposable hot cups to help reduce waste on campus.

You can also refill your bottle at water stations across our campuses.



Food and drink

Whether you want a quick coffee or a full refuel, there's lots of delicious options on our campuses

Cafes, shops and places to eat are open across all three campuses. Please see the tables on the following pages for details.



University Park Campus

Food and drink outlets

Please see University Park Campus on the Visitor Map

Location (Building number)	Outlet	Serving	Opening times
Architecture and Built Environment (17)	Marmont Café	Bewleys coffee, hot and cold beverages, breakfast rolls, hot and cold snacks, sandwiches, soup, jacket potatoes, treats and desserts	8am–3.45pm
Coates Building (36)	Coates Café	Breakfast, street food lunches, sandwiches, soup, snacks, hot and cold beverages, desserts and Krispy Kreme Doughnuts	8.15am–4pm
David Ross Sports Village (34)	David Ross Sports Village Café	Starbucks café with hot and cold food and beverages	8.30am–6pm
George Green Library (24)	George Green Library Café	Starbucks barista coffee/teas, juices, breakfast snacks, hot and cold sandwiches, salads, soup, pastries, snacks and desserts	8.30am–4pm
Hallward Library Entrance Area (9)	Hallward Library	Starbucks barista coffee/teas, juices, hot and cold sandwiches, salads, soup, pastries, snacks and desserts	8.30am–4pm
Law and Social Sciences Building (7)	Eros Café	Bewleys coffee, hot and cold beverages, hot and cold snacks, sandwiches, soup, jacket potatoes, treats and desserts	8.30am–2.30pm
Monica Partridge Building (62)	Starbucks pop-up	Starbucks beverages and snacks	8.15am–4pm
Outside Portland Building (15)	Pop-up street food stalls	Sample the tastes of Nottingham at a variety of catering stalls from eateries across the city	9.30am–4.30pm

University Park Campus food and drink outlets

Please see **University Park Campus** on the Visitor Map

Location (Building number)	Outlet	Serving	Opening times
Portland Building, B Floor (15)	Portland Coffee Co	Café with hot and cold food and beverages	8am–4pm
	SPAR	Cold food, snacks and beverages	9.30am–5.30pm
Portland Building, Food Court (15)	Item 7	African fusion cookery, cold beverages	11am–4pm
	Love Joes	Bewleys coffee, hot and cold beverages, hot and cold snacks, sandwiches, soup, jacket potatoes, treats and desserts	11.30am–4pm
	Mooch	Hot and cold food, snacks and beverages	11.30am–4.30pm
	Portland 56	Freshly baked pizza, gourmet burgers, cold beverages	11am–4pm
	Saijokai Pan Asia	Asian fusion cuisine and cold beverages	11am–4pm
	Starbucks	A broad selection of Italian-style espresso beverages, cold blended beverages and a selection of teas and packaged roasted whole bean coffees. Fresh pastries and breakfast items also available	8am–5pm
	Subway	Create your own sandwiches, salads and wraps. With hot sides, snacks and drinks available as meal deals	11am–5pm
Sir Clive Granger Building (16)	Sir Clive Granger Café	Bewleys coffee, hot and cold beverages, hot and cold snacks, sandwiches, soup, jacket potatoes, treats and desserts	8.15am–3.30pm
Trent Building (11)	Trent Café	Grumpy Mule barista coffee/teas, juices, breakfast, hot and cold toasted bagels, salads, soup, pastries, snacks and desserts	8am–4pm

Jubilee Campus

Food and drink outlets

Please see Jubilee Campus on the Visitor Map

Location (Building number)	Outlet	Serving	Opening times
Advanced Manufacturing Building (59)	Café-SNUG	Starbucks barista coffee/teas, cold beverages, hot and cold snacks, sandwiches, soup, jacket potatoes, treats and desserts	8.30am–3.15pm
Atrium (5)	Catering Atrium	Bewleys coffee, cold beverages, food court style lunch menu, sandwiches, jacket potatoes, treats and desserts	9.30am–4.30pm
Business School South Building, D Floor (7)	Library Café	Costa coffee, cold beverages, hot and cold snacks, sandwiches, treats and desserts	8.15am–3.30pm
The Exchange Building (2)	Café Terrazzo	Bewleys coffee, hot and cold beverages and snacks, sandwiches, soup, jacket potatoes, treats and desserts	8.30am–4pm
	SPAR	Cold food, snacks and beverages	9.30am–5.30pm
Triumph Road - near Sports Centre (30)	Costa	A broad selection of hot and cold beverages. Sandwiches and breakfast items also available	8am–7pm
Xu Yafen Building (11)	Café Aspire	Grumpy Mule barista coffee/teas and juices. Breakfast and à la carte lunch menu, including salads, soup, pastries, snacks and desserts	8am–4pm

Sutton Bonington Campus

Food and drink outlets

Please see **Sutton Bonington Campus** on the Visitor Map

Location	Outlets	Serving	Opening times
The Barn (20)	The Hive	Offering a full menu including light bites, hot main meals, a selection of sandwiches, salads and desserts	8.30am–2pm
	Mulberry Tree Café	Starbucks barista coffee/teas, cold beverages, sandwiches, snacks, soups and pastries	10am–6pm
Food Hall, next to the Barn (17)	Costcutter	Cold food, snacks and beverages	10am–6pm

Talks and activities

Check which campus you need to be on for your subject-specific activities.

We have subject-specific activities running from 9.30am–4.30pm across our three campuses. Look for your subject in the blue, red and green boxes below to find out what campus your subject activities are based on.

We also have general activities and talks, such as campus tours and accommodation viewings, across the three campuses.



University Park Campus

- Architecture and built environment
- Arts and humanities
- Education
- Engineering and design
- Foundation courses
- Law
- Liberal arts
- Mathematical sciences
- Medicine, healthcare and health sciences
- Nursing
- Midwifery
- Modern languages and cultures
- Sciences
- Social sciences

Sutton Bonington Campus

- Veterinary medicine and science
- Food science - this course is taught at Sutton Bonington Campus. For September, this subject will have staff and students available at University Park Campus to chat to
- All other Biosciences subjects based at Sutton Bonington Campus are not taking part in this open day. Please book on to the 15 October open day for Biosciences subjects based at Sutton Bonington Campus

Jubilee Campus

- The Business School:
 - Accounting
 - Finance
 - Industrial economics*
 - Management
 - Computer science
- * For all other economics courses, please visit University Park Campus and see page 27 for economics subject activity

STEM

We offer many courses related to Science, Technology, Engineering and Maths. Look out for the **STEM** symbol on the following pages to see the full range of subjects on offer. Plus, check out the STEM taster lecture on page 25.

Subject stands

We have a wide range of subjects for you to discover at our open days. Academic staff and students will be available at stands across campus for all of the below courses at Nottingham. A map and list of subject stand locations will be available on arrival to the open day.

Some of these subjects are also running talks, demonstrations and building tours. You can find full details of these activities within this programme.

Subject stands	Additional talk/activity
Accountancy (on Jubilee Campus)	✓
Aerospace engineering	✓ STEM
American and Canadian studies	✓
Ancient history (see classics and archaeology talk)	✓
Archaeology (see classics and archaeology talk)	✓
Architectural environment engineering	✓ STEM
Architecture/architecture and environmental design	✓ STEM
Arts and humanities foundation year	
Biochemistry	✓ STEM
Biology	✓ STEM
Cancer sciences	✓ STEM
Chemical and environmental engineering	✓ STEM
Chemistry	✓ STEM
Civil engineering	✓ STEM
Classical civilisation (see classics and archaeology talk)	✓
Classics (Latin and Greek) (see classics and archaeology talk)	✓
Computer science (on Jubilee Campus)	✓ STEM
Criminology	✓

Subject stands	Additional talk/activity
Economics	✓ STEM
Education	
Electrical and electronic engineering	✓ STEM
English	✓
Environmental biology	✓
Environmental science	✓
Film and television studies	✓
Finance, accounting and management (on Jubilee Campus)	✓
Food science (subject stand will be available at University Park Campus)	STEM
Foundation engineering and physical sciences	✓ STEM
Foundation science	✓ STEM
Genetics	✓ STEM
Geography	✓
Health sciences foundation	STEM
Health promotion and public health	✓
History	✓
History of art and visual culture	
Industrial economics (on Jubilee Campus)	✓ STEM
International media and communications	✓

Subject stands

Some of these subjects are also running talks, demonstrations and building tours. You can find full details of these activities within this programme.

Subject stands	Additional talk/activity
Law	✓
Liberal arts	✓
Management and international management (on Jubilee Campus)	✓
Mathematics	✓ STEM
Mechanical and manufacturing engineering	✓ STEM
Medical physiology and therapeutics	✓ STEM
Medicine - undergraduate	
Medicine - graduate entry medicine	✓
Medicine with foundation year / at Lincoln	
Midwifery	✓
Modern languages and culture: <ul style="list-style-type: none"> - French - German - Mandarin and contemporary Chinese - Modern languages (and with business) - Russian and Slavonic studies - Spanish, Portuguese and Latin - Translation studies 	✓
Music	✓
Natural sciences	✓ STEM
Neuroscience	✓ STEM

Subject stands	Additional talk/activity
Nursing (adult, child and mental health)	✓
Pharmacology	✓ STEM
Pharmacy and pharmaceutical sciences	✓
Philosophy	✓
Physics	✓ STEM
Physiotherapy	✓ STEM
Plant science	✓
Politics and international relations	✓
Product design and manufacture	✓ STEM
Psychology	
Social work	✓
Sociology	✓
Sport and exercise science	✓ STEM
Sport rehabilitation	✓ STEM
Theology and religious studies	✓
Veterinary medicine (on our Sutton Bonington campus only, see page 36 for details)	✓
Zoology	✓ STEM



University Park Campus

General talks and activities

Please see **University Park Campus** on the Visitor Map

Activity	Type	Description	Times	Location (map reference)
Accommodation	Drop-in	Accommodation staff and the Residential Experience Team (ResX Team) will be available to chat to and answer your questions about where to live and what support is available in halls of residence	9.30am-4pm	Great Hall, Trent Building (11)
		A variety of catered halls will be open for self-led viewings on University Park Campus. Current students will be available to answer your questions. Halls catering staff will be in the halls dining rooms to answer your questions about the catering provision	10am-4.30pm	Ancaster (B), Beeston (N), Cavendish (C), Cripps (L), Lenton (K), Lincoln (J), Nightingale (F), Rutland (H), Sherwood (G) and Willoughby (D) Accessible rooms open for viewing: Ancaster (B) - room B0.02 Lenton (K) - room A9 Rutland (H) - room A10
		Self-catered rooms at Broadgate Park and Dagfa House will be open for viewings. Both halls are a short walk from University Park Campus, just outside the West entrance. Staff will be available to answer questions	10am-4pm	Broadgate Park (A), Turnpike Lane, Beeston, Nottingham, NG9 2RX Dagfa House, Salthouse Lane, Beeston, Nottingham NG9 7FY
		Self-catered rooms will be open for viewings at Raleigh Park and The Vantage. For bus information to these halls please see page 4	10am-4pm	Raleigh Park, Derwent Way, off Faraday Road, Nottingham, NG7 2EG The Vantage, Traffic Street, Nottingham, NG2 1NE
Admissions	Drop-in	Admissions staff will be available to answer any questions that you have about the admissions process and applying to the University of Nottingham	9.30am-4pm	Great Hall, Trent Building (11)
Campus tour	Guided tour	Walking tours of University Park Campus for science, engineering, medicine, health care and health sciences Tour duration: 45 minutes approx	9.30am-4pm	Tours departing from: George Green Library (24)
		Walking tours of University Park Campus for arts, humanities, law and social sciences Tour duration: 45 minutes approx	9.30am-4pm	Tours departing from: Hallward Library (9)

University Park Campus general talks and activities

Please see **University Park Campus** on the Visitor Map

Activity	Type	Description	Times	Location (map reference)
Careers and Employability Service	Drop-in	Find out how the careers team can support you in developing your employability while at Nottingham. Find out more about Unitemps from the Unitemps team	9.30am-4pm	Great Hall, Trent Building (11)
Chaplaincy	Drop-in	Find out about chaplaincy and faith support at Nottingham	9.30am-4pm	Great Hall, Trent Building (11)
Digital and Technology Services	Drop-in	Find out about digital and technology services at Nottingham	9.30am-4pm	Great Hall, Trent Building (11)
Disability Support Services	Drop-in	Chat to members of the university's disability and academic support teams	9.30am-4pm	Great Hall, Trent Building (11)
Funding and Financial Support	Drop-in	Chat to members of the University's Funding and Financial Support team at the Information Fair	9.30am-4pm	Great Hall, Trent Building (11)
Information Fair	Drop-in	University representatives from all the main areas providing services and support for students will be available to chat to and answer questions	9.30am-4pm	Great Hall, Trent Building (11)
Lakeside Arts	Drop-in	The Lakeside Arts team will be available to answer your questions about the Creative Careers NAA, the University Philharmonia and Choirs, Creative Academies, annual project with New Theatre and their year-round public arts programme. Watch a video about beyond the curriculum experiences involving students, and chat to staff	10am-4pm	DH Lawrence Pavillion, Lakeside Arts (49)
Language Centre	Drop-in	Chat to members of the Language Centre team	9.30am-4pm	Great Hall, Trent Building (11)
	Talk	Find out from the Language Centre how to study a language alongside your main subject. Improve existing skills or start a new language	12noon-12.30pm 2.30pm-3pm	Senate Chamber, Trent Building (11)

University Park Campus general talks and activities

Please see **University Park Campus** on the Visitor Map

Activity	Type	Description	Times	Location (map reference)
Libraries	Drop-in	Members of the library team will be available to answer your questions at the Information Fair	9.30am-4pm	Great Hall, Trent Building (11)
	Self-guided tour	George Green Library (science and engineering subjects) will be open for self-guided tours. A staff member will be available to answer questions	9.30am-4.30pm	George Green Library (24)
		Hallward Library (arts and social sciences subjects) will be open for self-guided tours. A staff member will be available to answer questions	9.30am-4.30pm	Hallward Library (9)
Mature students	Drop-in	Staff will be available to answer your questions about being a mature student at Nottingham	9.30am-4pm	Great Hall, Trent Building (11)
	Talk	Information and advice session for mature students and opportunity to chat with current mature students	2.30-3.15pm	LG11, Trent Building (11)
Nottingham Confucius Institute	Drop-in	Find out about the Nottingham Confucius Institute and chat to the team	9.30am-4pm	Great Hall, Trent Building (11)
Parents'/carers' session	Talk	As a parent/carers, find out from staff and students how Nottingham will provide for your young person's well-being, security and success	10-10.45am 1-1.45pm	C15, Pope Building (27)
Quiet space	Drop-in	A quiet, safe space for anyone who needs a break from the day's activities. This is a low-sensory environment for those who need it	9.30am-4pm	C11 and C12, Monica Partridge Building (62)



University Park Campus general talks and activities

Please see **University Park Campus** on the Visitor Map

Activity	Type	Description	Times	Location (map reference)
Sport	Drop-in	Find out more about the sport facilities and sport clubs at Nottingham	9.30am-3pm	High Performance Zone, David Ross Sports Village (34)
		Chat to sports staff about the sports programmes at Nottingham	9.30am-4pm	Djanogly Terrace
		Chat to sports staff about the sports programmes at Nottingham	9.30am-4pm	Great Hall, Trent Building (11)
	Self-guided tour	Look around our impressive sports village including the climbing wall, high performance zone and swimming pool	9.30am-4pm	David Ross Sports Village (34)
	Talk	Lacrosse at Nottingham	9.30-10am	Conference Room, David Ross Sports Village (34)
		Sport at Nottingham	9.30-10am	Studio 2, David Ross Sports Village (34)
		Hockey at Nottingham	10.30-11am	Studio 2, David Ross Sports Village (34)
		Rowing at Nottingham	10.30-11am	Conference Room, David Ross Sports Village (34)
		Sports scholarships at Nottingham	11.15-11.45am	Studio 2, David Ross Sports Village (34)
		Tennis at Nottingham	11.30am-12noon	Conference Room, David Ross Sports Village (34)
		Football at Nottingham	12.30-1pm	Studio 1, David Ross Sports Village (34)
		Netball at Nottingham	1-1.30pm	Studio 2, David Ross Sports Village (34)
		Rugby at Nottingham	1.15-1.45pm	Studio 1, David Ross Sports Village (34)
		Sport at Nottingham	3-3.30pm	Studio 1, David Ross Sports Village (34)



University Park Campus general talks and activities

Please see **University Park Campus** on the Visitor Map

Activity	Type	Description	Times	Location (map reference)
Student life and Students' Union	Drop-in	Drop into the Students' Union and find out about student groups, societies and volunteering. Take a self-guided tour of the Portland Building to see all the facilities, services and spaces for clubs and societies	10am-4pm	Welcome Zone, Portland Building (15)
Student support and wellbeing	Drop-in	Find out about the health and wellbeing support available to students while studying at Nottingham	9.30am-4pm	Great Hall, Trent Building (11)
Study Abroad	Drop-in	Meet members of the Study Abroad team and chat about the opportunities on offer	9.30am-4pm	Great Hall, Trent Building (11)



STEM at UoN

The past few years have highlighted the need for innovation in science, technology, engineering and mathematics (STEM).

But there's more to STEM than the headlines. From wearable brain scanners to sustainable materials for batteries, our pioneering researchers are changing the world in ways you can't imagine.

Come and hear about how our work in these areas is making an impact on the world. We'll follow the lecture with an information session, where you can ask about degree options based on your interests.

Talk:

Sustainable futures through STEM

Want to get involved in creating a sustainable future? Come and hear about how our STEM subjects are making an impact on the world. Learn how we're bringing innovative ideas to life: like hydrogen powered cars, and windows that generate electricity. This talk will highlight how our research and teaching is supporting global sustainability goals and most importantly, how you can get involved.

Delivered by:

Chris Brignell, Director of Natural Sciences

and

Jez Turner, Assistant Professor, Foundation Engineering and Physical Sciences

When and where:

12noon–12.45pm. A13, Pope Building (27)

Information session:

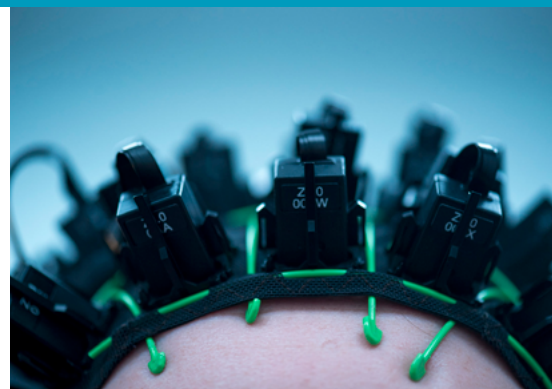
After the lecture we'll be around to talk to you about your interests and our STEM degree courses. Maybe there are some you didn't know existed. We'll help signpost you to subject stands and talks.

When and where:

12.45–1.15pm. A13, Pope Building (27)

STEM subjects at Nottingham

STEM To help identify STEM subjects, we've highlighted subject talks and activities with this symbol throughout the open day programme.



University Park Campus

Subject stands

Academic staff and students will be available at stands across campus for all courses offered at Nottingham. A map and list of subject stand locations will be available on arrival to the open day.

If your chosen course doesn't appear on the following pages, this just means there is no in-person talk or session on the day. Please make your way to the subject stand where staff and students will be happy to tell you more about your course and answer any questions.

Subjects talks and activities

Please see **University Park Campus** on the Visitor Map

Activity	Type	Description	Times	Location (map reference)
American and Canadian studies	Taster session	Experience American and Canadian studies teaching at Nottingham	10.30-11am 1.30-2pm	C14, Monica Partridge Building (62)
Architecture/ architecture and environmental design STEM - see engineering for architectural environment engineering	Talk and tour	Presentation on our courses followed by an optional tour of teaching facilities	10.30-11.45am 1.30-2.45pm	C10, Sustainable Research Building (17)
Biochemistry STEM	Guided tour	Guided tours of the Life Sciences Building laboratories. Depart every 15 minutes from 9.30am	9.30am-4pm	Foyer, Life Sciences (23)
	Talk	Staff and students will be available to discuss our courses and answer your questions	11-11.45am 2-2.45pm	B3, Life Sciences (23)
Biology STEM	Guided tour	Guided tours of the Life Sciences Building. Depart every 15 minutes from 9.30am	9.30am-4pm	Foyer, Life Sciences (23)
	Talk	Biology degree courses at Nottingham	10-10.45am 1-1.45pm	B3, Life Sciences (23)
	Lab demonstrations	Chat with academics about our degrees and view lab demonstrations on our research	10.45am-1pm 1.45-2.45pm	A50, Life Sciences (23)
Cancer sciences STEM	Talk	Hear about what you will learn on our cancer sciences course	10-10.30am 1-1.30pm	A208, Biodiscovery Institute (43)
Chemistry STEM	Talk	Chemistry at Nottingham	10.30-11.15am 1.30-2.15pm	Lecture Theatre X1, Chemistry Building (28)
	Talk	Exciting chemistry: A chemistry demonstration lecture	3-4pm	Lecture Theatre X1, Chemistry Building (28)
Classics and archaeology	Talk	Classics and archaeology at Nottingham	11.30am-12.15pm 2.30-3.15pm	A02, Humanities Building (55)
Criminology	Talk	Studying criminology at Nottingham	11-11.30am 2-2.30pm	B62, Law and Social Sciences (LASS) (7)

Subject stands

Academic staff and students will be available at stands across campus for all courses offered at Nottingham. A map and list of subject stand locations will be available on arrival to the open day.

If your chosen course doesn't appear on the following pages, this just means there is no in-person talk or session on the day. Please make your way to the subject stand where staff and students will be happy to tell you more about your course and answer any questions.

University Park Campus subject talks and activities

Please see University Park Campus on the Visitor Map

Activity	Type	Description	Times	Location (map reference)
Economics STEM Covers all economics subjects, excluding industrial economics. Industrial economics is based at the Business School, see page 34	Talk	Overview of School of Economics courses	11-11.45am 1-1.45pm 3-3.45pm	A48, Sir Clive Granger Building (16)
Engineering STEM	Talk and tour	Aerospace engineering Presentation on our courses followed by an optional tour of teaching facilities	10-11.30am 11am-12.30pm 12.45-2.15pm 2pm-3.30pm	B108, L2 Laboratory (39)
	Drop-in	Arkwright Scholars' drop-in Join our staff and student ambassadors for refreshments (open to current Arkwright Scholars only)	11am-2pm	B16, Engineering and Science Learning Centre (ESLC) (54)
	Talk and tour	Architectural environment engineering Presentation on our courses (duration 1 hour) followed by an optional tour of teaching facilities	10-11.30am 12.30-2pm	C25, Coates Building (36)
		Chemical and environmental engineering Talk followed by optional tour of laboratories	9.30-10.45am 11am-12.15pm 1-2.15pm 2.30-3.45pm	A14, Pope Building (27)
		Civil engineering Talk followed by optional tour of laboratories	10-11.30am 12noon-1.30pm 2-3.30pm	C01, Engineering and Science Learning Centre (ESLC) (54)
		Electrical and electronic engineering Talk followed by optional tour	9.30-10.45am 11am-12.15pm 12.30-1.45pm 2-3.15pm	A17, Pope Building (27)
		Mechanical and manufacturing engineering Presentation on our courses followed by an optional tour of teaching facilities	9.45-11.15am 11.15am-12.45pm 12.30-2pm 2.15-3.45pm	A09, Engineering and Science Learning Centre (ESLC) (54)
		Product design and manufacture Presentation on our courses followed by an optional tour of teaching facilities	10.30-11.30am 1.30-2.30pm	A09, Engineering and Science Learning Centre (ESLC) (54)

Subject stands

Academic staff and students will be available at stands across campus for all courses offered at Nottingham. A map and list of subject stand locations will be available on arrival to the open day.

If your chosen course doesn't appear on the following pages, this just means there is no in-person talk or session on the day. Please make your way to the subject stand where staff and students will be happy to tell you more about your course and answer any questions.

University Park Campus subject talks and activities

Please see University Park Campus on the Visitor Map

Activity	Type	Description	Times	Location (map reference)
English	Talk	Studying English at Nottingham	11-11.45am 1.30-2.15pm	Senate Chamber, Trent Building (11)
Environmental biology	Talk	Studying environmental biology at Nottingham (joint talk with environmental science)	10-10.45am 1-1.45pm	C16, Pope Building (27)
Environmental science	Talk	Studying environmental science at Nottingham (joint talk with environmental biology)	10-10.45am 1-1.45pm	C16, Pope Building (27)
Film and television studies	Talk	Studying media and culture at Nottingham	10.30-11.30am 1-2pm	B46, Trent Building (11)
Foundation engineering and physical sciences STEM	Talk and tour	Talk followed by optional tour	11am-12.15pm 2-3.15pm	C17, Pope Building (27)
Foundation science STEM	Guided tour	Guided tours of the Life Sciences Building. Depart every 15 minutes from 9.30am	9.30am-4pm	Foyer, Life Sciences (23)
Genetics STEM	Guided tour	Guided tours of the Life Sciences Building. Depart every 15 minutes from 9.30am	9.30am-4pm	Foyer, Life Sciences (23)
	Talk	Genetics degree courses at Nottingham	10-10.45am 1-1.45pm	B3, Life Sciences (23)
	Lab demonstrations	Chat with academics about our degrees and view lab demonstrations on our research	10.45am-1pm 1.45-2.45pm	A50, Life Sciences (23)
Geography	Talk	Studying geography at Nottingham	10-10.50am 12noon-12.50pm 2-2.50pm	A48, Sir Clive Granger Building (16)
Health promotion and public health	Talk	Introduction to the new BSc in Health Promotion and Public Health course at Nottingham	1.30-2pm	LT4, Medical School (46)
History	Drop-in	Meet staff and current students	9.30am-4.30pm	A18/19 Lenton Grove (5)
	Talk	Studying history at Nottingham	10.45-11.30am 12.30-1.15pm 2.15-3pm	A03, Monica Partridge Building (62)
International media and communications studies	Talk	Studying media and culture at Nottingham	10.30-11.30am 1-2pm	B46, Trent Building (11)

Subject stands

Academic staff and students will be available at stands across campus for all courses offered at Nottingham. A map and list of subject stand locations will be available on arrival to the open day.

If your chosen course doesn't appear on the following pages, this just means there is no in-person talk or session on the day. Please make your way to the subject stand where staff and students will be happy to tell you more about your course and answer any questions.

University Park Campus subject talks and activities

Please see University Park Campus on the Visitor Map

Activity	Type	Description	Times	Location (map reference)
Law	Talk	Studying law at Nottingham	10-10.45am 1-1.45pm	B62, Law and Social Sciences (LASS) (7)
Liberal arts	Talk	Introduction to liberal arts	11.30am-12noon 2-2.30pm	B46, Trent Building (11)
Mathematics STEM	Guided tour	Guided tours of the maths facilities with current students	9.30am-3.30pm	Atrium, Mathematical Sciences (20)
	Talk	Student panel talk	9.45-10.15am 2.30-3pm	A17, Mathematical Sciences (20)
	Talk	Studying maths at Nottingham	10.30-11.15am 1.30-2.15pm	B60, Keighton Auditorium, Mathematical Sciences (20)
	Taster session	Experience a typical first-year lecture	11.30am-12noon	B60, Keighton Auditorium, Mathematical Sciences (20)
Medical physiology and therapeutics STEM	Talk	An introduction to the medical physiology and therapeutics (MPT) degree	1-1.30pm	C17, Pope Building (27)
Medicine – graduate entry	Talk	<p>Find out more about studying medicine as a graduate. Graduate entry medicine is a 4-year degree that is designed for students who have completed an undergraduate degree before they start their studies.</p> <p>If you are interested in studying medicine as your first degree, then please visit our Medicine and Health Sciences marquee where staff and students will be happy to answer your questions</p>	12noon-1pm	Lecture Theatre X1, Chemistry Building (28)
Midwifery	Talk	An introduction to studying midwifery at Nottingham	10-11am	LT1, Medical School (46)
Modern languages and cultures	Talk	<p>An overview of the courses offered by modern languages and cultures at Nottingham. The talk will cover course structures, teaching & learning, and the all-important year abroad.</p> <p>Please note: This talk is for prospective students only. We won't be able to accommodate accompanying guests due to limited capacity</p>	1-1.45pm	A46, Trent Building (11)
Music	Talk	Studying music at Nottingham	10.15-11am 1.15-2pm	A30, Arts Centre, Department of Music (33)

Subject stands

Academic staff and students will be available at stands across campus for all courses offered at Nottingham. A map and list of subject stand locations will be available on arrival to the open day.

If your chosen course doesn't appear on the following pages, this just means there is no in-person talk or session on the day. Please make your way to the subject stand where staff and students will be happy to tell you more about your course and answer any questions.

University Park Campus subject talks and activities

Please see University Park Campus on the Visitor Map

Activity	Type	Description	Times	Location (map reference)
Natural sciences STEM	Drop-in	Find out more at our information event where you can speak to current students and staff about the courses	9.30am-4.30pm	A15, Pope Building (27)
	Talk	Natural sciences: study three scientific subjects in one degree	10-11am 2-3pm	A13, Pope Building (27)
Neuroscience STEM	Guided tour	Guided tours of the Life Sciences Building laboratories. Depart every 15 minutes from 9.30am	9.30am-4pm	Foyer, Life Sciences (23)
	Talk	Studying neuroscience at Nottingham	12noon-12.45pm 3-3.45pm	B3, Life Sciences (23)
Nursing	Guided tour	Guided tour of nursing facilities. Duration of tours: 30 minutes	10.30am 11.30am 1pm 2pm	Foyer, Medical School (46)
	Talk	Studying for a degree in nursing (adult) at Nottingham	10.30-11am	LT3, Medical School (46)
	Talk	Studying for a degree in nursing (child) at Nottingham	11.30am-12noon	LT1, Medical School (46)
	Talk	Studying for a degree in nursing (mental health) at Nottingham	12.30-1pm	LT3, Medical School (46)
Pharmacology STEM	Guided tour	Guided tours of the Life Sciences Building laboratories. Depart every 15 minutes from 9.30am	9.30am-4pm	Foyer, Life Sciences (23)
	Talk	Learn more about studying pharmacology at Nottingham	11.30am-12.45pm	A05, Pharmacy Building (26)
Pharmacy and pharmaceutical sciences	Talk	Welcome to the School of Pharmacy. Student and admissions talks followed by a Q&A session	10-11.15am 1-2.15pm	C14, Pope Building (27)
	Tours and taster session	Visit us in the Pharmacy Building for tours of our facilities and interactive demonstrations	11.30am-12.30pm 2.30-3.30pm	Pharmacy Building (26)
Philosophy	Talk	Find out about the philosophy course and career options	10-10.30am	A03, Humanities Building (55)
	Taster session	Philosophy taster class	1-1.30pm	A03, Humanities Building (55)

Subject stands

Academic staff and students will be available at stands across campus for all courses offered at Nottingham. A map and list of subject stand locations will be available on arrival to the open day.

If your chosen course doesn't appear on the following pages, this just means there is no in-person talk or session on the day. Please make your way to the subject stand where staff and students will be happy to tell you more about your course and answer any questions.

University Park Campus subject talks and activities

Please see University Park Campus on the Visitor Map

Activity	Type	Description	Times	Location (map reference)
Physics STEM	Guided tour	Guided tours of the Physics Building. Depart every 15 minutes from 10am	10am-3.30pm	A30, Physics Building (22)
	Drop-in	Meet our staff to chat about courses and research	10am-4pm	Foyer, Physics Building (22)
	Lab demonstrations /drop-in	Exciting physics demonstrations. Running throughout the day	10am-4pm	A-floor Labs, Physics Building (22)
	Drop-in	Find out about theoretical physics projects and options, and our mathematical physics and theoretical physics courses	10am-4pm	A01, Physics Building (22)
	Guided tour	Guided tours of the MRI Centre	12noon-3pm	Foyer, Physics Building (22)
	Talk	Studying physics at Nottingham	11-11.40am 2-2.40pm	B1, Physics Building (22)
	Talk	Searching for disruptive quantum materials and technologies	12noon-12.25pm	B1, Physics Building (22)
	Talk	Weighing galaxies	1-1.25pm	B1, Physics Building (22)
Physiotherapy STEM	Talk	Studying physiotherapy at Nottingham	10.45-11.15am	Studio 1, David Ross Sports Village (34)
			12noon-12.30pm 2.30-3pm	Studio 2, David Ross Sports Village (34)
Plant science	Talk	Studying plant science at Nottingham	11.30am-12.15pm 2.30-3.15pm	C16, Pope Building (27)
Politics and international relations	Talk	Learn more about studying politics and international relations at Nottingham, followed by a Q&A session	10.30-11.15am 1.30-2.15pm	B63, Law and Social Sciences (LASS) (7)
	Taster session	Experience a politics and international relations lecture at Nottingham	11.30am-12.15pm 2.30-3.15pm	B63, Law and Social Sciences (LASS) (7)
Social work	Talk	Studying social work at Nottingham	10.30-11am 1.30-2pm	A4, Law and Social Sciences (LASS) (7)
Sociology	Talk	Studying sociology at Nottingham	11.45am-12.15pm 2.45-3.15pm	B62, Law and Social Sciences (LASS) (7)

Subject stands

Academic staff and students will be available at stands across campus for all courses offered at Nottingham. A map and list of subject stand locations will be available on arrival to the open day.

If your chosen course doesn't appear on the following pages, this just means there is no in-person talk or session on the day. Please make your way to the subject stand where staff and students will be happy to tell you more about your course and answer any questions.

University Park Campus subject talks and activities

Please see University Park Campus on the Visitor Map

Activity	Type	Description	Times	Location (map reference)
Sport and exercise science STEM	Guided tour	Guided tours of one of our teaching laboratories. Tours will take place every hour, on the hour from 10am and last for 30 minutes (last tour departs at 4pm)	10am-4pm	Foyer, David Ross Sports Village (34)
	Talk	Studying sport and exercise science at Nottingham	11.30am-12.15pm 2-2.45pm	Studio 1, David Ross Sports Village (34)
Sport rehabilitation STEM	Talk	Studying sport rehabilitation at Nottingham	10-10.30am	Studio 1, David Ross Sports Village (34)
			1.45-2.15pm	Studio 2, David Ross Sports Village (34)
STEM courses (science, technology, engineering, and mathematics) STEM	Talk	Want to get involved in creating a sustainable future? Come and hear about how our STEM subjects are making an impact on the world. Learn how we're bringing innovative ideas to life, like hydrogen powered cars, and windows that generate electricity. Plus, we'll highlight degrees to consider if you want to get involved	12noon-12.45pm	A13, Pope Building (27)
	Information session	After the lecture we'll be around to talk to you about STEM degree courses and help signpost you to subject stands and talks	12.45-1.15pm	A13, Pope Building (27)
Theology and religious studies	Talk and taster session	Studying theology and religious studies at Nottingham	11am-12noon 2-3pm	A03, Humanities Building (55)
Zoology STEM	Guided tour	Guided tours of the Life Sciences Building. Depart every 15 minutes from 9.30am	9.30am-4pm	Foyer, Life Sciences (23)
	Talk	Zoology degree courses at Nottingham	10-10.45am 1-1.45pm	B3, Life Sciences (23)
	Lab demonstrations	Chat with academics about our degrees and view lab demonstrations on our research	10.45am-1pm 1.45-2.45pm	A50, Life Sciences (23)



Jubilee Campus

General talks and activities

Please see Jubilee Campus on the Visitor Map

Activity	Type	Description	Times	Location (map reference)
Accommodation	Drop-in	Catered halls will be open for self-led viewings on Jubilee campus. Current students will be available to answer your questions	10am-4pm	Newark Hall Accessible room open for viewing - room A118
		Close to Nottingham train station, The Vantage self-catered halls will be open for drop in viewings	10am-4pm	The Vantage, Traffic Street, Nottingham, NG2 1NE
Libraries	Self-guided tour	The Business Library (business, commerce, economics and finance subjects) will be open for self-guided tours. A staff member will be available to answer questions	9.30am-4.30pm	Business Library, Business School South, top floor (7)
		The Djanogly Learning Resource Centre (education and computer science subjects) will be open for self-guided tours. A staff member will be available to answer questions	9.30am-4.30pm	Djanogly Learning Resource Centre (3)
Quiet space	Drop-in	A quiet, safe space for anyone who needs a break from the day's activities. This is a low-sensory environment for those who need it	9.30am-4pm	B7+, Dearing Building (6)
Sport at Jubilee	Self-guided tour	Look around Jubilee Sports Centre and our facilities	9.30am-4.30pm	Jubilee Sports Centre (30)





Subject stands

Academic staff and students will be available at stands across campus for all courses offered at Nottingham. A map and list of subject stand locations will be available on arrival to the open day.

If your chosen course doesn't appear on the following pages, this just means there is no in-person talk or session on the day. Please make your way to the subject stand where staff and students will be happy to tell you more about your course and answer any questions.

Jubilee Campus subject talks and activities

Please see Jubilee Campus on the Visitor Map

Activity	Type	Description	Times	Location (map reference)
Accountancy	Talk	Overview of Business School courses	10-11am 1-2pm	B52, Business School South (7)
Finance, accounting and management	Taster session	Hands on taster session led by current students at Nottingham	11-11.45am 2-2.45pm	B52, Business School South (7)
Industrial economics		Please note this activity is for prospective students only. There will be a Q&A session hosted for accompanying guests		
STEM				
Management and international management				
For all other economics courses, please see economics entry on page 27				
Computer science	Talk	Computer science at Nottingham	11.15am-12.15pm 1.15-2.15pm	LT3, Exchange Building (2)
STEM				

Sutton Bonington Campus

General talks and activities

Please see **Sutton Bonington Campus** on the Visitor Map

Activity	Type	Description	Times	Location (map reference)
Accommodation	Drop-in	Self-catered rooms will be open for viewings at Bonington Student Village	9.30am-5.30pm	Thrumpton Flat (N)
	Talk	Find out about the accommodation choices on offer on Sutton Bonington campus. Ask our team any questions that you have	12noon-12.45pm 1.30-2.15pm	A32, Main Building (11)
Campus tour	Guided tour	A guided campus tour will be included as part of your chosen subject specific activity programme	Please check your subject programme for times	Please check your subject programme for location
Libraries	Self-guided tour	The James Cameron-Gifford Library (veterinary medicine and biosciences) will be open for self-guided tours. A staff member will be available to answer questions	9.30am-4.30pm	James Cameron-Gifford Library (34)
Quiet space	Drop-in	A quiet, safe space for anyone who needs a break from the day's activities. This is a low-sensory environment for those who need it	9.30am-4pm	SGTR A20, Veterinary Medicine and Science (27)
Sport at Sutton Bonington	Self-guided tour	Look around Sutton Bonington Sports Centre and our facilities	9.30am-4.30pm	Sutton Bonington Sports Centre (26)





Biosciences subjects based at Sutton Bonington Campus are not taking part in this open day. Please book on to the 15 October open day for Biosciences subjects based at Sutton Bonington Campus.

Food science is taught at Sutton Bonington Campus. However, this course will have staff and students available at University Park Campus to chat to for the September open day.

Environmental biology, environmental science and plant science courses are all taught on University Park Campus. Please see pages 28 and 31 for talk details for these subjects.

Sutton Bonington subject talks and activities*

Please see **Sutton Bonington Campus** on the Visitor Map

Activity	Type	Description	Times	Location (map reference)
Food science STEM	Subject stand	Chat to staff and students at University Park Campus. This course is taught at Sutton Bonington, but staff and students will be available to meet with at University Park Campus for this open day only	9.30am-4.30pm	East Drive, University Park Campus
Veterinary medicine and science	Taster session	Structured half-day programme of talks, tours, demonstrations and information about life as a vet student at Nottingham Each activity lasts 30 minutes and all participants will have the opportunity to take part in the below during their morning or afternoon session: Clinical exam - a discussion and hands-on activity to understand the process of CPR Admissions - a talk on the admissions process for Nottingham Vet School Campus tour - a tour of the veterinary facilities and Sutton Bonington campus Student talk - a talk on life as a veterinary student covering both their studies and social activities Ultrasound - a hands on demonstration for diagnostic imaging Lambing - a hands on simulation to learn more about lambing Suturing - a hands on activity to learn some suturing skills *Activities may vary due to teaching materials available at the time	9am-1pm 1-5pm	Veterinary Medicine and Science (27)

