



University of
Nottingham

UK | CHINA | MALAYSIA



This
is your
world

2022
Undergraduate
Prospectus



Welcome to the University of Nottingham undergraduate prospectus for 2022

We're doing things a little differently this year. As part of our sustainability efforts during the pandemic, we're reusing the 2021 prospectus as most of the information here will still be correct for 2022. The following pages will summarise where there are changes, and where you can find the most up-to-date information online.

Coronavirus

All of the latest information for applicants and future students detailing all our support and safety measures can be found at nottingham.ac.uk/coronavirus/applicants

Any changes to your student experience will also be covered, such as access to accommodation and facilities, sport and travel.

Summary of changes

- Rankings, league tables
- Facilities and access
- Accommodation
- City life
- Study abroad
- Courses
- Finance
- Applying

Rankings, league tables and statistics

Nottingham remains in the top 25 of the *Complete University Guide* and the top 30 for *The Times* and *The Sunday Times Good University Guide* for 2022.

We are a world top 20 UK university in the QS World Rankings and THE World University Rankings 2022, and ranked in the top ten for employability for seven years running by the Graduate Market 2013-2020, *High Fliers Research*.

Facilities and access

University Park Campus has won a Civic Trust Green Flag Award every year since 2003 – the only university campus to achieve this.

To get a better look at our university campuses, you can take a virtual tour at nottingham.ac.uk/virtualnottingham

Accommodation

UK students must apply for University arranged accommodation by 2 June 2022 and international students by 2 August 2022.

Our accommodation website will detail all safety and security measures in place across all campuses, price changes and your catered or self-catered options – nottingham.ac.uk/accommodation

City life

The planned Broadmarsh Shopping Centre redevelopment has been postponed from its original due date of 2021. More information will be made available once confirmed.

Study abroad, placements and other opportunities

Study abroad locations are based on existing destinations. Options may change due to, for example, curriculum developments, updates to partnership agreements or travel restrictions. Where changes occur, these will be reflected on our course webpages as soon as possible. For the latest information, please visit nottingham.ac.uk/studyabroad

At this point in time, we expect placements to run as usual from the academic year 2022/23 onwards. However, we cannot yet offer a guarantee, as we do not know what the level of coronavirus-related disruption will be on the years ahead. Please rest assured that we will do our very best to ensure that you are able to undertake placements one way or another.

We work with a range of organisations to provide work placements, field trips and volunteer opportunities. We expect opportunities to run as usual from the academic year 2022/23, but this cannot be guaranteed. We will do our best to arrange suitable activities.

Courses

View our online prospectus to search for your course and find the most up to date information: nottingham.ac.uk/ugstudy

Finance

Updated information about 2022/23 tuition fees, student loans and grants, bursaries and scholarships and all other aspects of student finance can be found at nottingham.ac.uk/fees

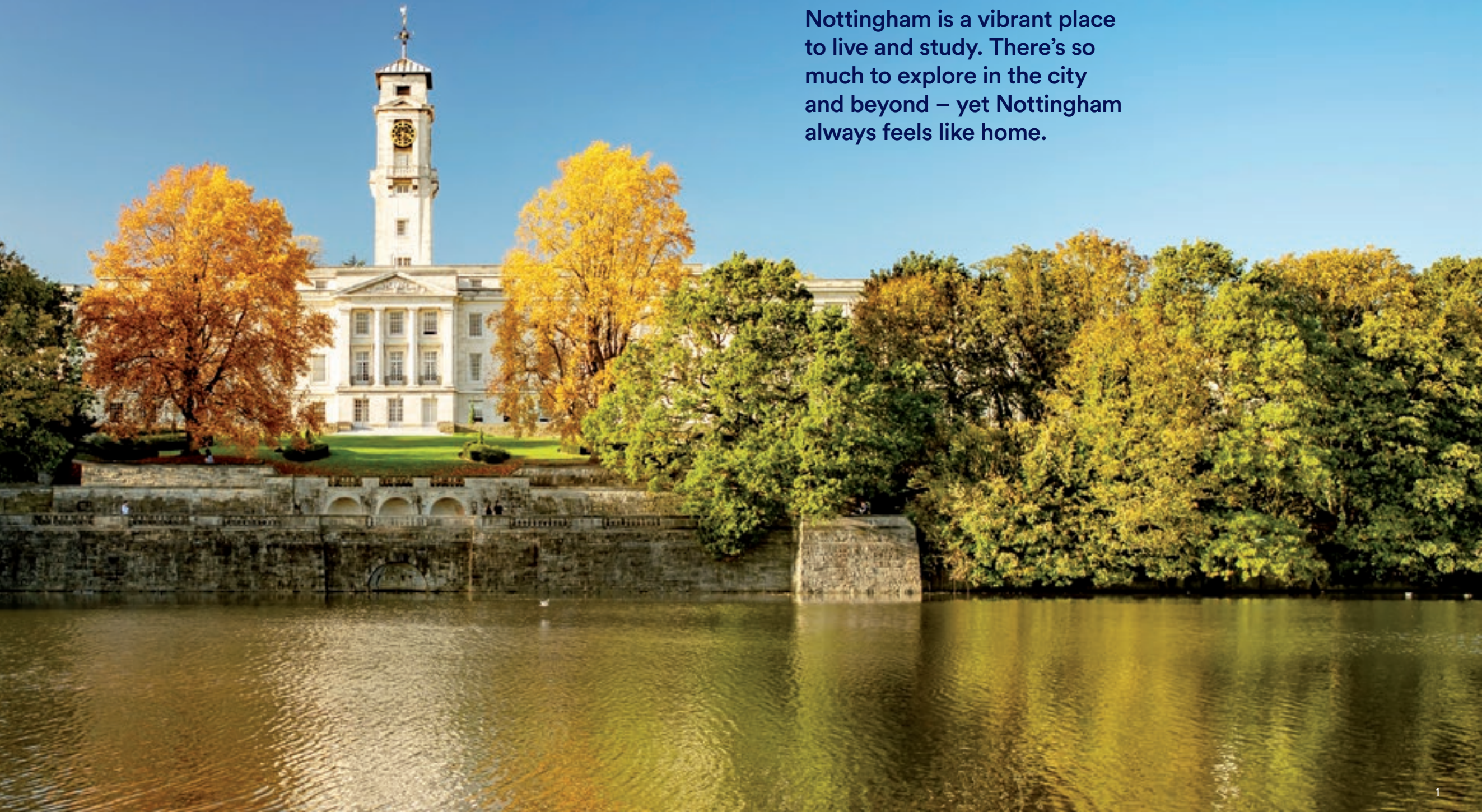
Applying

Application deadlines for 2022 are yet to be confirmed by UCAS due to the ongoing disruption. Please refer to ucas.com for the most up-to-date information.



Welcome to Nottingham

Nottingham is a vibrant place to live and study. There's so much to explore in the city and beyond – yet Nottingham always feels like home.



Contents

Why Nottingham?	4
Studying for your degree	6
Teaching and tutors	8
Careers and employability	10
University Park Campus	12
Jubilee Campus	16
Sutton Bonington Campus	20
Accommodation	24
International campuses	28
Your Students' Union	30
Sport	32
Nottingham city life	34
Study abroad	38
International students	40
Support services	42

■ Foundation courses 44

■ Arts

American and Canadian studies	46
Archaeology	48
Classics and ancient history	50
English literature, language and creative writing	52
Film, media and communication studies	56
History	58
History of art and visual culture	62
Languages	64
Liberal arts	70
Music	72
Philosophy	74
Theology and religion	78

■ Engineering

Aerospace engineering	80
Architecture and built environment	82
Chemical and environmental engineering	84
Civil engineering	86
Electrical and electronic engineering	88
Mechanical, materials and manufacturing engineering	92

■ Medicine and health sciences

Medical sites	96
Biochemistry	98
Biomedical sciences and health	100
Medicine	102
Nursing and midwifery	104
Physiotherapy and sport rehabilitation	106
Veterinary medicine and science	108

■ Science

Agriculture and animal sciences	110
Biological sciences	112
Chemistry	116
Computer science	118
Environmental sciences	122
Food science and nutrition	124
Dietetics	126
Mathematical sciences	128
Natural sciences	130
Pharmacy and pharmacology	132
Physics and astronomy	134
Psychology and neuroscience	138

■ Social sciences

Business and management	140
Criminology	142
Economics	144
Education	146
Finance	148
Geography	150
Law	152
Politics and international relations	154
Social work	156
Sociology and social policy	158

Courses on our China and Malaysia campuses	160
Applying to Nottingham	162
Finance and funding	164
Index	166
Contact us	171

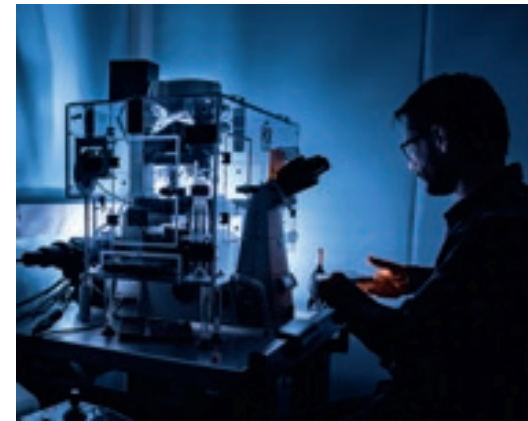
Top 10 for employability

*The Graduate Market 2013-2019,
High Fliers Research*



Ranked as a
world top 100
university

*QS World University
Rankings 2020*



Top 25 in all
three major UK
league tables

The Complete University Guide 2020

*The Guardian University
Guide 2020*

*The Times and Sunday Times
Good University Guide 2020*

**RUSSELL
GROUP**

A member of a prestigious
group of universities using
research to transform lives.



Teaching
Excellence
Framework

**Outstanding
teaching**

Get involved

Visit our award-winning
campuses – they're safe,
sustainable and inspiring.

Study at one of our 300 partner
universities in 40 countries.

Get involved with our 300
societies, sports and
volunteering opportunities.

Explore the lively city
on your doorstep.



Find out more
nottingham.ac.uk/study

Studying for your degree

Our facilities and academic opportunities will give you an exceptional learning experience.

Study spaces

We have many study spaces and facilities that you can use, such as:

- 24-hour computer rooms and Wi-Fi
- free laptop loan services
- silent and quiet study zones



Learn a language

Study a language alongside your degree with our Language Centre. Choose from:

- Arabic
- French
- German
- Indonesian
- Italian
- Japanese
- Korean
- Mandarin Chinese
- Russian
- Spanish

Libraries

Our eight libraries are subject-specific, so you can either work alongside the books you need or get a change of scenery working in any other library. We have a variety of study spaces in all our libraries.

You will find:

- study rooms and spaces for groups or individuals
- library cafes
- 24-hour openings at key times of the year
- computers and printers

As a student here you can access a huge number of resources, such as ebooks, films, print books, journals and special collections including medieval manuscripts and rare books.



Teaching and tutors



We have passionate tutors – their teaching is fuelled by their up-to-date research. You’ll learn the most recent theories and methods from experts.

High-quality teaching

We were awarded the highest ranking in the latest Teaching Excellence Framework (TEF). This award recognises that we deliver the best quality teaching to our students.

TEF was introduced by the government to measure the quality of teaching and learning across universities and colleges in England.



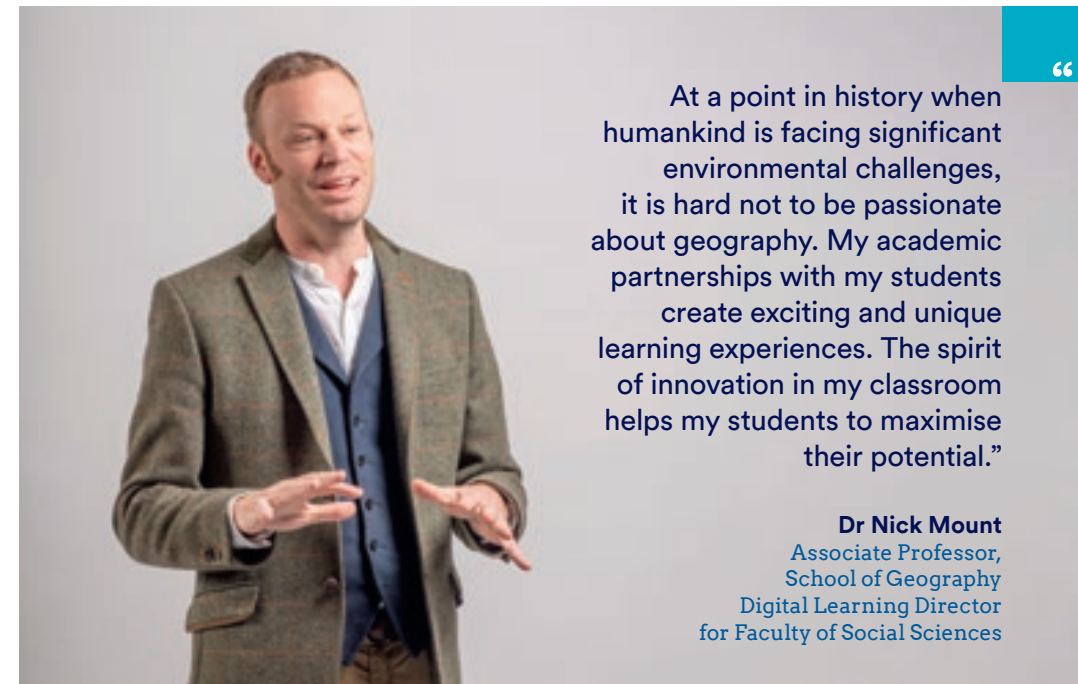
Teaching Excellence Framework

Our strengths are:

- outstanding record for graduate employment
- over 84% of our students said they were satisfied with the teaching on their course in the National Student Survey 2019
- high-quality teaching and learning facilities



Find out more
nottingham.ac.uk/teaching



“At a point in history when humankind is facing significant environmental challenges, it is hard not to be passionate about geography. My academic partnerships with my students create exciting and unique learning experiences. The spirit of innovation in my classroom helps my students to maximise their potential.”

Dr Nick Mount
Associate Professor,
School of Geography
Digital Learning Director
for Faculty of Social Sciences

What our students say



“My experience in seminars gave me such a detailed exploration of the topic that it left me hooked!”

George Bull
BA History



“Learning at this university has really helped me to see my favourite subject in a new way! My tutor in particular really helped me to get stuck into my subject. The module he ran in my first year made French grammar so much more interesting and helped lay the groundwork for the rest of my degree.”

Caitlin Ayres
BA Modern Language Studies

Careers and employability

We are one of the most targeted universities by Britain's leading graduate employers.*

96.5%

of our students were employed or in further study six months after graduation**

Over 450

visits by companies for talks, careers fairs and more***

Your careers service

Whether you know where your future lies, or are undecided, our team will help you on your way to a career you love. We will help you to:

- explore your ideas
- build your CV
- prepare applications
- practise your interview technique, and much more

Our team will support you throughout your studies and after graduation.

Opportunities outside your degree

At Nottingham, you will have lots of opportunities to help you impress employers. Discover part-time opportunities through Unitemps, our on-campus recruitment service. Or take part in a paid internship through the exclusive Nottingham Internship Scheme.

Choose to do an optional placement year in a related industry or another country. This will extend your course by a year and add 'with Placement Year' to your degree title.

Join the Nottingham Advantage Award which recognises and rewards your extracurricular activities. You can choose from a wide range of modules to develop the key skills employers are looking for.

Visit nottingham.ac.uk/advantageaward



“

I attended many of the University's careers events such as the Engineering Internships Fair, lunchtime talks and Spotlight On events. I started to understand what opportunities were available to me and could narrow down the industries I may be interested in. I also learnt about the variety of companies out there.”

Louise Wheeler

MEng Mechanical Engineering with an Industrial Placement Year

“

I graduated from Nottingham in 2018 and started working as an intern across the Downing Street/Cabinet Office digital communications teams. I was asked to stay, and since then I have worked as a lead analyst in my team. I've led a team of 15 analysts, launched the Government Communications Plan 2018 and managed a set of industry-leading digital products. My advice? Get your foot in the door and go from there.”

Jake Rodd

BA International Relations



* Ranked in the top 10 in The Graduate Market 2013-2019, High Fliers Research.

** Known destinations for home undergraduates from the most recently published Destinations of Leavers from Higher Education survey.

*** The number of company visits onto campus for a fair, presentation, workshop or panel event during the 2018/19 academic year.



Find out more
nottingham.ac.uk/careers

University Park Campus

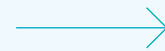
With 17 Green Flag Awards for its fantastic green spaces, wildlife and commitment to sustainability, University Park Campus is one of the most beautiful campuses in the UK.

This campus is home to the majority of schools and departments, plus many more facilities. This includes the Students' Union, cafes, bars, restaurants, a health centre and much more. This means that you will have all your essentials in one place.

Getting around our campuses is easy, either on foot, by bike, or on one of our free hopper buses.




YouTube #UniversityPark



Find out more
nottingham.ac.uk/campuses



University Park Campus

 Student accommodation

Jubilee Campus
20-minute walk from
Portland Building

City centre
15 minutes by bus or tram

Sutton Bonington Campus
25-minute hopper bus ride

David Ross Sports Village

Millennium Gardens

Cripps Health Centre

Hallward Library

Trent Building

Portland Building

George Green Library

Nottingham Lakeside Arts

Queen's Medical Centre

Boating lake

Highfields Park

University of Nottingham International College

Highfields Sports Complex

Jubilee Campus

A short walk away from University Park Campus, Jubilee Campus has eco-friendly and sustainable buildings, such as the GlaxoSmithKline Sustainable Chemistry Lab. The campus is also home to our Business School, School of Education and computer sciences.



Subjects taught here include:

Business and management

Education

Computer science

We are always investing in our campuses and buildings to ensure that you have the most up-to-date facilities and equipment. We have recently invested in the new Advanced Manufacturing Building on Jubilee Campus which offers state-of-the-art equipment alongside teaching and study spaces.

 YouTube

#JubileeCampus



Find out more
nottingham.ac.uk/campuses

Jubilee Campus

The Sir Harry and Lady Djanogly Learning Resource Centre →

Business School →

Jubilee Sports Centre ↓

↑
GSK Carbon Neutral Laboratory for Sustainable Chemistry

Advanced Manufacturing Building →

↑
Student accommodation

University Park Campus
20-minute walk

City centre
10 minutes by bus

Sutton Bonington Campus

With beautiful surroundings, Sutton Bonington is home to the School of Life Sciences and veterinary school. There is also a working dairy centre, commercial farm and multiple state-of-the-art laboratories.



Subjects taught here include:

Agriculture and animal sciences

Biotechnology

Dietetics

Food science and nutrition

Microbiology

Plant science

Veterinary medicine and science

The campus has a cafe, bar, convenience store and regular farmers' markets. It also has a free hopper bus service to and from University Park Campus. Loughborough town centre is a 25-minute bus ride away.

 YouTube

#SuttonBonington



Find out more
nottingham.ac.uk/campuses

Sutton Bonington Campus

↑ Dairy Centre



Bioenergy
Brewing
Science
↓

Sports
Centre
↓

Main
Building
↓

James
Cameron-
Gifford
Library
←



The Barn
↓

Food Sciences
Building
←



Veterinary
medicine
and science
←



Student
accommodation

University Park Campus
25-minute hopper bus ride

Loughborough town centre
25-minutes by bus

Accommodation

Welcome to your new home.
Living in halls is great for studying and exploring the campus and city.

Accommodation guarantee

We guarantee University-arranged accommodation for all first-year students, subject to meeting conditions. You will need to firmly accept your offer to study with us and apply for accommodation by the deadline. Please check our website for full terms and conditions.

Prices of accommodation

Our accommodation options can suit a variety of budgets. They range from £110 to £250 per week.* You will pay accommodation fees each term, so you won't need to pay it all when you start. The price of your accommodation will depend on the hall, room type, contract length and catering option you choose.



Room types

We have a range of rooms available. You'll have your own bedroom and all rooms are furnished. Here are some of the options that you can choose from:

- single room with shared bathroom and kitchen facilities
- en-suite room with your own bathroom
- rooms with larger beds
- studios

All our accommodation has:

- Wi-Fi in your room
- social spaces
- bills included in the total fee
- 24-hour security
- study spaces

Meeting your neighbours

Our residence life programme puts on a variety of social events, such as ping pong championships and jewellery-making classes, so you can get to know your neighbours.





From your halls to your lectures

We have accommodation on all our campuses and in the local area. All our halls are close to our campuses. You can get from your accommodation to the buildings you study in by:

- getting a free hopper bus that the University runs between all campuses
- using the variety of public transport in and around the city
- walking – you can apply for different zones of our on-campus accommodation, so you can be closer to your academic buildings
- using our cycle routes and secure bike storage

Self-catered or catered?

In catered and part-catered accommodation you will have some meals cooked for you. If you choose catered, you'll be given a meal card which you can use for lunch at shops and cafes on our campuses.

In self-catered accommodation you will shop and cook for yourself, so you can make meals with your flatmates.

Food in catered accommodation

You can always choose from a variety of options. We cater for food allergies, intolerances and dietary requirements.

A few examples are:

- dairy free
- gluten free
- halal
- vegan
- vegetarian

Need to discuss your dietary requirements in more detail? Go to the website or contact our catering team at bh-hallscatering@nottingham.ac.uk

Video tours

Tamra's video tour will show you round her catered accommodation.

We have a playlist of accommodation tours on YouTube and you can visit us in person at our open days.



Accessibility

If you have accessibility requirements get in contact and let us know what you need. disabilityadviser@nottingham.ac.uk

→ **Find out more**
nottingham.ac.uk/accommodation

International campuses

You can choose to study at our China and Malaysia campuses as part of your course. Both campuses teach in English so you don't need to learn the language to study there.

China campus

Home to more than 7,500 students from all over the world, our 144-acre parkland site in the city of Ningbo offers excellent teaching, research and sports facilities.



Malaysia campus

You will find a diverse and vibrant community of over 5,000 students. The campus is surrounded by beautiful hills and waterfalls.

With impressive teaching and study facilities, the campus is also home to a sports centre, swimming pool, shops and food outlets. It is just an hour outside of Kuala Lumpur.

Your Students' Union

The University of Nottingham Students' Union is an independent, student-led organisation. It represents your needs, protects your rights and makes sure your voice is heard.

You're at the heart of everything we do – after all, we're run by you, for you. We want to make sure you have the best possible time at University.

Whether you want to get involved in our activities, events, sports, societies and volunteering opportunities, make change as part of our committees, academic reps or SU Officer team, or find support when you need a helping hand, you can rely on us.

- su.nottingham.ac.uk
- @UoNSU
- @uonsu
- @UofNSU
- UoN_SU



Societies, clubs and volunteering

We're home to more than 200 societies, over 70 sports clubs and over 100 volunteering opportunities. No matter what you're into, there's something for everyone.

Limber up your larynx with A Cappella Society, stretch the stress away with Yoga Society or make a splash with Windsurf and Kite – and that's just the start!

And if you can't find the society you're looking for? We'll help you create it!

Our media groups

Fancy yourself as TV's fresh new face? Reckon you're radio's next big thing? Do you tread the boards with passion and grace? Or are you a wordsmith with a talent for tracking down the latest scoop? Then our award-winning student groups have you covered.

Find your audience with Nottingham Student Television (NSTV), University Radio Nottingham (URN), Nottingham New Theatre and Impact Magazine.



Supporting you

University is exciting, but it can be a little scary too. So whatever your circumstances or needs, your Students' Union is here to help.

If you're looking for support on financial, academic or housing issues, speak to Students' Union Advice.

Not feeling your best and need to talk? Our student-led services such as Night Owls and Nightline are here when you need them.

We all need a helping hand from time to time, and there's always someone to talk to at your Students' Union.



Find out more

Get involved, make change and find support
su.nottingham.ac.uk

Sport

Health and wellbeing is a huge part of life here at the University of Nottingham and we have a proud history of sporting success.



One of the founding institutions of the varsity competition, we have consistently finished in the top 10 of the British Universities and Colleges Sport (BUCS) leagues. In 2018/19 we finished in second place and were also awarded Sports University of the Year by the *Good University Guide*.



Student sport and fitness membership has become a key part of the student life at Nottingham. This includes a range of benefits including access to our facilities on all three of our campuses.

All of our membership options are published online.



Health and wellbeing

We offer many fun and engaging programmes to help support your mental and physical wellbeing, as well as providing opportunities for you to achieve your sporting aspirations, such as:

- **Engage**
A beginners' programme providing opportunities for you to try new sports
- **Intramural Sports**
Create new friendships competing in hall sports leagues
- **group exercise**
200 classes each week led by our team of fitness experts
- **sports clubs**
Over 70 sport clubs to choose from
- **Disability Sports Officer**
Providing accessible sporting and fitness opportunities for all

Facilities

Our facilities are world-class and have had over £50 million invested in them. These include:

- a 200-station fitness suite
- a high performance zone
- a sport injury clinic
- multiple sports halls
- a 25m swimming pool

Everyone is welcome to use our facilities at a level that suits them, from beginners to professional. We offer scholarships for those who want to compete at the top level. Our alumni have gone on to win Olympic, World, Commonwealth and European titles.

→ Find out more
nottingham.ac.uk/sport

Nottingham city life

As one of the largest cities in the East Midlands, there's a lot going on in Nottingham. Here's a quick taste of what you can expect.



Getting around

Nottingham's excellent public transport network takes you directly to the heart of the city, with stops across University Park and Jubilee Campus.

When it's time to head back to campus, you can catch a bus or tram on a discounted student ticket, or use one of the many taxi ranks around the city.

Nottingham City Transport offers annual passes on your student card which give you unlimited bus travel for the year.



Shopping

Nottingham brings you high street brands alongside hidden treasures, plus a thriving independent scene in the Hockley area of the city centre.

You'll find vintage clothing boutiques and designer outlets, record stores and comic book shops, and plenty of unique shops whatever your interests.

Nottingham city centre is currently developing another new shopping, leisure and dining complex, due to be completed in 2021.



Find out more
nottingham.ac.uk/nottinghamlife



Food and drink

Nottingham caters for everybody, with chain restaurants to student favourites like Ye Olde Trip to Jerusalem, said to be the oldest pub in England.

Relax with alcohol-free drinks at Café Sobar or 200 Degrees Coffee (founded by Nottingham alumni), and enjoy a drink with furry friends at our famous Kitty Café.

Whether vegan, veggie or halal, you'll have plenty of choice for eating out. International cuisine is covered by authentic restaurants serving Thai, Indian, Greek and many more, so you can find a taste of home no matter where you've joined us from.

Our students recommend these places to eat:

- Red's True Barbecue
- Cosmo (world food buffet)
- Annie's Burger Shack
- Mowgli (Indian street food)
- Hockley Arts Club (bottomless afternoon tea)

Safety

Nottingham is one of the safest places for a night out in the UK. We've won a Purple Flag Award for a diverse, safe and enjoyable experience every year since 2012.

Street pastors offer support, marshalls patrol our taxi ranks and there are safe spaces across the city, ready for whenever you may need them.

Nottingham also holds the national record for the most venues accredited by Best Bar None, a scheme making sure premises are well-managed and operated.

The Students' Union run a safe taxi scheme, where you can book a cab and pay later.

Music, festivals and events

You can find a student-friendly night whatever your taste on any day of the week. We have music venues like the renowned Rock City or regular nightclubs throughout the city.

Splendour and Dot to Dot festivals bring live music, and Broadway Cinema serves up independent film. As a UNESCO City of Literature since 2015, there are literary events all year round.

Old Market Square hosts regular events including our Christmas market, voted one of the best in the UK by *Vogue* in 2019. And don't miss Goose Fair, one of Europe's largest travelling fairs with over five hundred attractions.

The University's award-winning Lakeside Arts centre on University Park Campus offers discounted student tickets for its exhibitions and events. These include music, drama, dance and participatory workshops. Lakeside also has a recital hall, theatre, gallery and museum.

The University's student-run Nottingham New Theatre presents a student production in Lakeside's theatre each year.

Our students' best spots to relax:

- The arcade at Corner House
- Bookwise in Hockley
- Nottingham Arboretum
- The Garden Shisha Lounge
- Millennium Gardens, University Park Campus



→ Find out more nottingham.ac.uk/nottinghamlife

Study abroad

You can study or work abroad for a week or whole year. This could be part of your degree or something extra for you to explore.



Location

Along with over 300 partner universities, we also have campuses in China and Malaysia that you can study at. Some destinations include:

- Australia
- Canada
- Chile
- China
- Japan
- Malaysia
- New Zealand
- Spain
- USA

You don't need to be able to speak another language, as most partner universities teach in English.

Career benefits

Studying or working abroad will enhance your employability. It gives you personal and professional skills that employers look for, such as:

- cultural awareness
- independence
- language skills

Cost

Your tuition fee can be reduced by up to 80% for the time you are abroad. There are also a number of different scholarships and bursaries available. You can apply for a travel grant through Student Finance which can help fund your travel expenses. For more information visit [gov.uk/travel-grants-students-england](https://www.gov.uk/travel-grants-students-england)



“Everybody should have the opportunity to study abroad because of the life changing effects that a year away can have on a person. It may sound like a cliché, but studying abroad really is a once in a lifetime opportunity.”

Murray Liptrot
BA Politics and International Relations



Find out more
nottingham.ac.uk/studyabroad







International students

The University has over 9,000 international and EU students from over 150 countries. Our Students' Union has over 80 societies dedicated to countries and cultures.

Nottingham is a safe and exciting city with a diverse range of world cuisines, restaurants, shops and much more.

There are many religious communities in Nottingham, so both on campus and off you will be able to practise your faith.



-  UoNintstudents
-  @UoNintstudents
-  @UoNInternational
-  UoNEAO
-  UniofNottingham
-  UniofNottingham



Guidance for your country

We welcome students from around the world and accept a wide range of qualifications. We also offer a range of scholarships for international and EU students. For guidance, visit nottingham.ac.uk/go/yourcountry

English language

We accept IELTS, but we also accept a selection of other English language qualifications. Our Centre for English Language Education (CELE) provides courses and support to help you develop your English language and study skills. It is accredited by the British Council for the teaching of English in the UK.

Meet us in your country

Our staff visit many countries throughout the year to meet with students and their families. We also have staff based in some countries and a network of official representatives around the world.

Your future

Once you have graduated you will be part of a community of over 280,000 graduates worldwide. You will also have access to our Careers and Employability Service which can help you search for jobs in the UK or overseas, build your CV, apply for jobs and much more.

→ Find out more
nottingham.ac.uk/international

Support services

We have a range of services to support you throughout your time here. We can give you advice and information about anything from university life to finance.

MyNottingham

You can check information relating to your studies or the broader University experience via MyNottingham – an online system – helping you to stay organised.

The University Health Service

We offer healthcare, dental services, a pharmacy, GPs, physiotherapy and other specialist clinics, including the University Mental Health Advisory Service, based in an outstanding new health centre.

Student service centres

Student service centres are there to offer support, guidance and information to help make the most of your university life. They are situated on all our campuses.

Childcare services

Services are available for children aged four months to 12 years, including daycare facilities and a school holiday scheme.

Students' Union Advice

Run by the University's Students' Union, SU Advice offers free, professional and confidential advice about matters such as housing, money and course-related issues.

Visas and immigration support

Offers confidential and specialist advice for international and EU students on UK visa requirements.

Disability support services

Supports the needs of students with specific learning differences, disabilities, long-term medical conditions and/or mental health difficulties.

HealthyU

The University's initiative to support your health and wellbeing, providing advice and information about your health and lifestyle.

Counselling service

A free, confidential service to support you through any personal or study-related issues.

Chaplaincy and faith support

Offers friendship, advice and support to all students of any faith or none. The University has multi-faith facilities across all campuses to provide students with a space for reflection and prayer.

School welfare support

Your personal tutor will act as a gateway to the wider student support and development provision of the University. Each school also has a support and wellbeing officer who can provide support for more complex issues.

Security

The University provides a 24-hour uniformed presence on all campuses.

Funding and financial support

Offers information and advice on student loans, bursaries and scholarships. The team are also there to support you with any other financial concerns. See page 164 for more details.

Accommodation services

Answers your accommodation questions and supports you before you arrive and once you're living here.



■ Foundation courses

Do you need a different route into studying the degree of your choice?

Our foundation programmes are designed for talented applicants who don't quite meet the qualifications needed for direct entry onto our undergraduate courses. They may also be suitable if you have good qualifications, but have changed your mind about what you want to study.

During your foundation year, you will develop your academic and subject-specific skills in preparation for your degree-level study.

With high progression rates, we work hard to make sure every student reaches their full potential with us.

Why choose Nottingham?

- Progress to courses across many subjects in healthcare, engineering, science and the arts
- Access all the same study and support facilities across our UK campuses as our other undergraduate students
- Get involved with the vibrant Nottingham student community



Arts and Humanities BA courses with foundation years (Various)

	UCAS	Duration	A level	IB	IELTS
✓ Interview	Various	4-5 years	BCC	26	7.0

Engineering and Physical Sciences Foundation Programme

	UCAS	Duration	A level	IB	IELTS
✓ Study abroad ✓ Accredited	H100	4-5 years	BBB	30	5.5

Foundation Certificate in Health Sciences

	UCAS	Duration	A level	IB	IELTS
	A30A	1 year	BCC	–	–

Science with Foundation Year BSc/MSci

	UCAS	Duration	A level	IB	IELTS
BSc	CGFO	4 years	BBB	30	6.0
MSci	CFG0	5 years	BBB	30	6.0

Additional GCSE requirements apply to all foundation courses – please visit nottingham.ac.uk/foundationcourses for more details.

→ **Full course details**
Find up-to-date information and entry requirements online nottingham.ac.uk/ugstudy

American and Canadian studies

We offer a distinctive degree which explores not only the global significance of the United States, but also various aspects of Canadian culture and society.

Discover more about North America by studying its history, politics, literature, music, cinema and television. Through our interdisciplinary approach you will develop vital career skills including the ability to research, analyse and interpret materials across a range of diverse intellectual and cultural spheres.

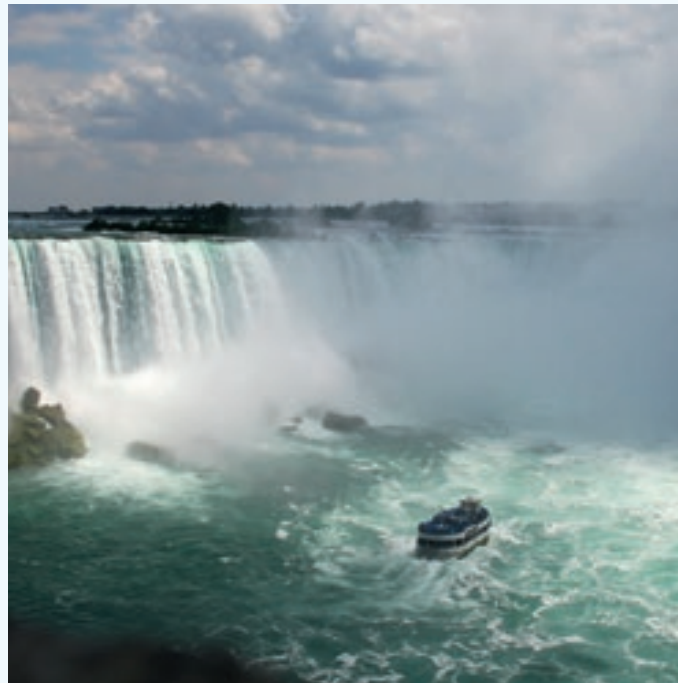
Why choose Nottingham?

- Spend a year studying at an American or Canadian university as part of your degree
- As the largest American and Canadian studies department in Europe we offer an extremely wide choice of modules
- Get involved in the student-run AmeriCan Society and develop and participate in great social events

Careers

Our graduates are able to demonstrate adaptability, independence and initiative, among other desirable qualities. The skills you gain are transferable to a wide range of roles within diverse sectors.

94% of undergraduates from the School of Cultures, Languages and Area Studies secured work or further study within six months of graduation. £21,000 was the average starting salary.*



* Known destinations of full-time home undergraduates who were available for employment, 2016/17. Salaries are calculated based on the median of those in full-time paid employment within the UK. All careers data is sourced from the Destination of Leavers from Higher Education, 2016/17 (HESA 2018).

American and Canadian Literature, History and Culture BA

	UCAS	Duration	A level	IB	IELTS
✓ Study abroad ✓ Placement	T700	3 years	ABB	32	7.0

American and Canadian Literature, History and Culture (International Study) BA

	UCAS	Duration	A level	IB	IELTS
✓ Study abroad ✓ Placement	T704	4 years	ABB	32	7.0
with Foundation	T70F	5 years	BCC	26	7.0

Politics and American Studies BA

	UCAS	Duration	A level	IB	IELTS
✓ Study abroad ✓ Placement	TL72	3 years	ABB	32	7.0

American Studies and English BA

	UCAS	Duration	A level	IB	IELTS
✓ Study abroad ✓ Placement	QT37	3 years	ABB	32	7.0

American Studies and Latin American Studies BA

	UCAS	Duration	A level	IB	IELTS
✓ Study abroad ✓ Placement	TR7K	4 years	ABB	32	7.0

American Studies and History BA

	UCAS	Duration	A level	IB	IELTS
✓ Study abroad ✓ Placement	TV71	3 years	ABB	32	7.0

Film and Television Studies and American Studies BA

	UCAS	Duration	A level	IB	IELTS
✓ Study abroad ✓ Placement	TW76	3 years	ABB	32	7.0

You might also like
 Liberal Arts BA (p.70)

→ **Full course details**
 Find up-to-date information and entry requirements online nottingham.ac.uk/ugstudy

Archaeology

Are you interested in human society and traces of the past? Archaeology is not just digging. It combines arts and sciences, using methods that range from historical argument to chemical isotopes.

At Nottingham, you'll get a thorough grounding in archaeological theory and practice. We support you to reach across both time and global cultures as you study our areas of expertise, such as the Silk Road, Sparta, animals, underwater archaeology, medieval houses and heritage in East Africa.

You will gain an in-depth knowledge of human culture and history, and varied skills from project management to data analysis and engaging communication.

Find a new world and new pasts through archaeology.

Why choose Nottingham?

- Through a broad variety of optional modules, you will explore a range of periods in European and Mediterranean archaeology and beyond, with topics ranging from evolution and human skeletons to maritime archaeology
- Gain valuable professional experience in our on-campus museum and school outreach programme, and by examining ancient artefacts in our archaeological laboratories
- Join excavations in diverse archaeological sites in Britain and abroad

Careers

Our graduates enter a wide variety of careers, including in the heritage, museum and archaeology sectors, central and local government, education publishing and journalism, law, and finance. Often graduates stay with us to undertake postgraduate studies.

Fieldwork

Compulsory fieldwork is usually carried out during the summer break. We have a dedicated fieldwork officer who will help you to find a suitable placement.



Course	UCAS	Duration	A level	IB	IELTS
Archaeology BA					
✓ Study abroad ✓ Placement	V400	3 years	ABB-BBB	32-30	7.0
with Foundation	V40F	4 years	BCC	26	7.0
Archaeology BSc					
✓ Study abroad ✓ Placement	V401	3 years	ABB-BBB	32-30	7.0
Historical Archaeology BA					
✓ Study abroad ✓ Placement	V403	3 years	ABB	32	7.0
Ancient History and Archaeology BA					
✓ Study abroad ✓ Placement	VVC4	3 years	ABB	32	7.0
Archaeology and Classical Civilisation BA					
✓ Study abroad ✓ Placement	QV84	3 years	ABB	32	7.0
Archaeology and Geography BA					
✓ Study abroad ✓ Placement	LV74	3 years	BBB	32-30	7.0
Archaeology and History BA					
✓ Study abroad ✓ Placement	VV14	3 years	ABB	32	7.0
Archaeology and History of Art BA					
✓ Study abroad ✓ Placement	VV43	3 years	BBB	32-30	7.0

You might also like
Liberal Arts BA (p.70)

Full course details
Find up-to-date information and entry requirements online nottingham.ac.uk/ugstudy

Classics and ancient history

Classics at Nottingham is not just about past lives. We put the ancient Greeks and Romans into wider contexts, in both time and space. Study war and politics, women and slaves, and how Mediterranean societies interacted with neighbouring cultures. You can study how Classics inspired world-wide responses including African Medeas, comics and TV, or compare Greek and Chinese religion.

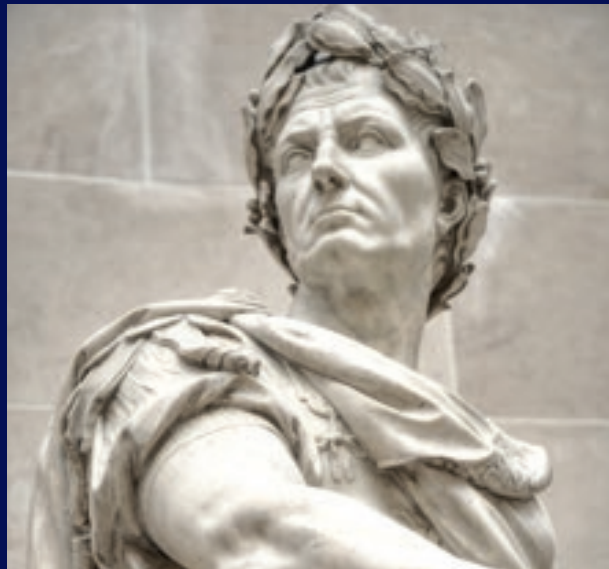
At Nottingham, you can specialise in history, literature, reception or art and material culture, and learn either Latin or Greek at any stage, or both from scratch. You will gain varied skills, from detailed linguistic analysis to understanding and communicating complex ideas. Explore the enduring power of stories by and about Greeks and Romans – myths, events, and ideas that still shape debates today.

Why choose Nottingham?

- Ranked in the top 10 in the UK for classics and ancient history in *The Complete University Guide 2020*
- Specialise in your chosen area or maintain a broad range of subjects and approaches – we offer variety in teaching methods and assessment to bring out the best in all
- Build up independence, intellectual confidence and research skills, with a carefully designed and well-supported trajectory from your first essay to your dissertation

Careers

Our graduates enter a wide variety of careers, including in the heritage, museum and archaeology sectors, central and local government, education, publishing and journalism, law, and finance. Often graduates stay with us to undertake postgraduate studies.



Full course details

Find up-to-date information and entry requirements online nottingham.ac.uk/ugstudy

Classics BA	UCAS	Duration	A level	IB	IELTS
✓ Study abroad ✓ Placement	Q800	3 years	ABB	32	7.0
Classical Civilisation BA	UCAS	Duration	A level	IB	IELTS
✓ Study abroad ✓ Placement	Q820	3 years	AAB-ABB	34-32	7.0
with Foundation	Q82F	4 years	BCC	26	7.0
Ancient History BA	UCAS	Duration	A level	IB	IELTS
✓ Study abroad ✓ Placement	V110	3 years	AAB-ABB	34-32	7.0
with Foundation	V11F	4 years	BCC	26	7.0
Ancient History and Archaeology BA	UCAS	Duration	A level	IB	IELTS
✓ Study abroad ✓ Placement	VVC4	3 years	ABB	32	7.0
Ancient History and History BA	UCAS	Duration	A level	IB	IELTS
✓ Study abroad ✓ Placement	V117	3 years	AAB	34	7.0
Archaeology and Classical Civilisation BA	UCAS	Duration	A level	IB	IELTS
✓ Study abroad ✓ Placement	QV84	3 years	ABB	32	7.0
Classical Civilisation and Philosophy BA	UCAS	Duration	A level	IB	IELTS
✓ Study abroad ✓ Placement	QV85	3 years	A*BB	34	7.0
Classics and English BA	UCAS	Duration	A level	IB	IELTS
✓ Study abroad ✓ Placement	QQ38	3 years	AAB	34-32	7.0

You might also like

Liberal Arts BA (p.70)

English literature, language and creative writing

Think you know ‘English’? Think again.

At Nottingham, we go beyond a love of books. Our huge choice of optional modules in everything from Vikings to drama means you can discover new passions, explore what you already love, and tailor your degree to what interests you the most.

You’ll build from a basis in applied linguistics, drama, creative writing, and literature (from medieval to present day), exploring what it is to be human through the historical, cultural and social contexts of a text. Our students are storytellers, writers, performers, poets, critics, analysts, archivists and presenters.

This is English at Nottingham.

Why choose Nottingham?

- Put your skills into practise and get involved with Impact Magazine, the Creative Writing Society, or the Words on Words blog
- Explore a particular career path with a bespoke work placement across a range of creative and other industries
- Unleash your creativity in a UNESCO City of Literature, with professional opportunities, networking and literary events both on campus and in the city



Careers

93.1% of undergraduates from the School of English secured work or further study within six months of graduation. £17,000 was the average starting salary.*

English BA	UCAS	Duration	A level	IB	IELTS
✓ Study abroad ✓ Placement	Q300	3 years	AAA-AAB	36-34	7.0
English Language and Literature BA	UCAS	Duration	A level	IB	IELTS
✓ Study abroad ✓ Placement	Q392	3 years	AAA-AAB	36-34	7.0
with Foundation	Q39F	4 years	BCC	26	7.0
English with Creative Writing BA	UCAS	Duration	A level	IB	IELTS
✓ Study abroad ✓ Placement	Q3W8	3 years	AAA-AAB	36-34	7.0

You might also like
 Liberal Arts BA (p.70)

* Known destinations of full-time home undergraduates who were available for employment, 2016/17. Salaries are calculated based on the median of those in full-time paid employment within the UK.

→ Full course details
 Find up-to-date information and entry requirements online
nottingham.ac.uk/ugstudy

Classics and English BA	UCAS	Duration	A level	IB	IELTS
✓ Study abroad ✓ Placement	QQ38	3 years	AAB-ABB	34-32	7.0

English and French BA	UCAS	Duration	A level	IB	IELTS
✓ Study abroad ✓ Placement	QR31	4 years	ABB	32	7.0

English and German BA	UCAS	Duration	A level	IB	IELTS
✓ Study abroad ✓ Placement	QR32	4 years	ABB	32	7.0

English and Hispanic Studies BA	UCAS	Duration	A level	IB	IELTS
✓ Study abroad ✓ Placement	QRH4	4 years	ABB	32	7.0

American Studies and English BA	UCAS	Duration	A level	IB	IELTS
✓ Study abroad ✓ Placement	QT37	3 years	ABB	32	7.0

English and History BA	UCAS	Duration	A level	IB	IELTS
✓ Study abroad ✓ Placement	QV31	3 years	AAA-AAB	36-34	7.0

History of Art and English BA	UCAS	Duration	A level	IB	IELTS
✓ Study abroad ✓ Placement	QV33	3 years	AAB	34	7.0

English and Philosophy BA	UCAS	Duration	A level	IB	IELTS
✓ Study abroad ✓ Placement	QV35	3 years	AAB-A*BB	34	7.0



“

The most enjoyable part of my course has been the variety – one day studying where the language has come from, and the next, studying a book that was written five years ago. I don't think there are many places where you get that kind of coverage across English. I've never met so many people, both students and teachers, with such passion for the subject.”

Tom Dineen
BA English

You might also like
Liberal Arts BA (p.70)



Full course details
Find up-to-date information and entry requirements online
nottingham.ac.uk/ugstudy

Film, media and communications studies

How do we make sense of the media that we produce and consume in our lives? We train you to understand the histories of contemporary media and cultural practices, and to interpret and use media in critical ways.

You will explore responses to media forms including popular and speciality cinema, streaming video and social media, and nonfiction media including news, propaganda and documentary.

In film and television studies, you will explore screen media's roles in everyday life, as industries, art forms and as cultural practices.

In international media and communications studies, you will look at how media production changes across cultures.

Why choose Nottingham?

- Work with screen-industry and advertising professionals through our internships in Hollywood with Twentieth Century Fox and the Art Directors Guild, and in the UK with Red Bee Creative and Canopy Insight
- Combine international media and communications with a language and spend a year abroad
- Get advice from industry guest speakers

Careers

We provide training in primary research, industry history, visual literacy, writing and analysis. Our graduates gain adaptable and collaborative skills which are attractive to a wide range of employers.



Film and Television Studies BA	UCAS	Duration	A level	IB	IELTS
✓ Study abroad ✓ Placement	W630	3 years	ABB	32	7.0
with Foundation	W63F	4 years	BCC	26	7.0
International Media and Communications Studies BA	UCAS	Duration	A level	IB	IELTS
✓ Study abroad ✓ Placement	P900	3 years	ABB	32	7.0
with Foundation	P90F	4 years	BCC	26	7.0
French and International Media and Communications Studies BA	UCAS	Duration	A level	IB	IELTS
✓ Study abroad ✓ Placement	RP19	4 years	ABB	32	7.0
German and International Media and Communications Studies BA	UCAS	Duration	A level	IB	IELTS
✓ Study abroad ✓ Placement	RP29	4 years	ABB	32	7.0
Spanish and International Media and Communications Studies BA	UCAS	Duration	A level	IB	IELTS
✓ Study abroad ✓ Placement	RP4X	4 years	ABB	32	7.0
Portuguese and International Media and Communications Studies BA	UCAS	Duration	A level	IB	IELTS
✓ Study abroad ✓ Placement	RP5X	4 years	ABB	32	7.0
Film and Television Studies and American Studies BA	UCAS	Duration	A level	IB	IELTS
✓ Study abroad ✓ Placement	TW76	3 years	ABB	32	7.0

You might also like
Liberal Arts BA (p.70)

Full course details
Find up-to-date information and entry requirements online
nottingham.ac.uk/ugstudy

History

You will already have your favourite subjects such as the Tudors, civil rights or the Second World War. Deepen your existing knowledge and discover new topics with our wide range of modules. You may also combine history with other subjects, such as politics or a language.

You will learn from our world-leading researchers. Innovative student-led seminars help you develop presentation, organisation, teamwork and leadership skills.

Your wide reading and work with historical sources will develop your ability to think critically, debate issues and make informed decisions. Studying history will help you understand society, culture, politics and economic life.

Why choose Nottingham?

- The diversity of our modules allows you to study periods, themes and events from 500CE to the present from countries and regions around the world
- Our student-centred learning approach develops your presentation, organisation, teamwork and leadership skills
- Ranked 4th in the UK for graduate prospects in *The Complete University Guide 2020*

Careers

Our students have an excellent track record of graduate employment with 81% in graduate-level employment or professional or HE study within six months of graduation (*The Guardian University Guide 2020*).

Careers include journalism, publishing, law, business and finance, government and non-governmental organisations, the armed forces, marketing and public relations, teaching, libraries and museums, the heritage industry, as well as research.



Full course details
Find up-to-date information and entry requirements online nottingham.ac.uk/ugstudy



History BA	UCAS	Duration	A level	IB	IELTS
✓ Study abroad ✓ Placement	V100	3 years	AAA-AAB	36-34	7.0
with Foundation	V10F	4 years	BCC	26	7.0
History and Politics BA	UCAS	Duration	A level	IB	IELTS
✓ Study abroad ✓ Placement	VL12	3 years	AAA	36-34	7.0
History and East European Cultural Studies BA	UCAS	Duration	A level	IB	IELTS
✓ Study abroad ✓ Placement	VRD7	3 years	ABB	32	7.0
History and History of Art BA	UCAS	Duration	A level	IB	IELTS
✓ Study abroad ✓ Placement	VV31	3 years	ABB	32	7.0
Ancient History and History BA	UCAS	Duration	A level	IB	IELTS
✓ Study abroad ✓ Placement	V117	3 years	AAB	34	7.0

You might also like
Liberal Arts BA (p.70)

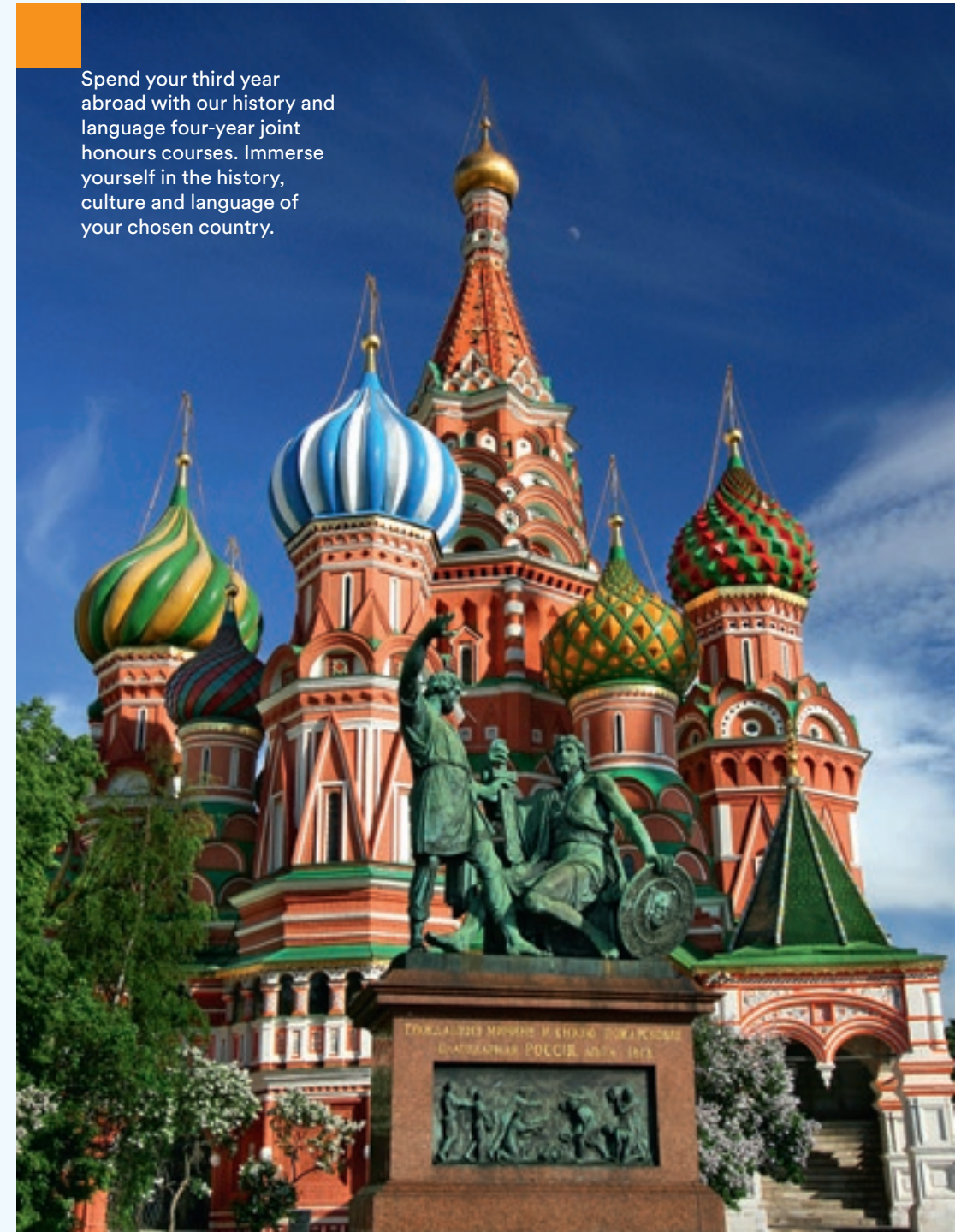
“

History gave me the confidence and experience to believe in my own abilities and skills. To feel as if I belonged and had a right to be there, and that my opinions mattered made a huge difference and is something I have carried into my career. The support of the academics was central to my experience. It is always an advantage to be able to think like a historian!”

Victoria Hayward
[BA History](#)

Archaeology and History BA	UCAS	Duration	A level	IB	IELTS
✓ Study abroad ✓ Placement	VV14	3 years	ABB	32	7.0
American Studies and History BA	UCAS	Duration	A level	IB	IELTS
✓ Study abroad ✓ Placement	TV71	3 years	ABB	32	7.0
English and History BA	UCAS	Duration	A level	IB	IELTS
✓ Study abroad ✓ Placement	QV31	3 years	AAA-AAB	36-34	7.0
History and Contemporary Chinese Studies BA	UCAS	Duration	A level	IB	IELTS
✓ Study abroad ✓ Placement	VT11	4 years	ABB	32	7.0
French and History BA	UCAS	Duration	A level	IB	IELTS
✓ Study abroad ✓ Placement	RV11	4 years	ABB	32	7.0
German and History BA	UCAS	Duration	A level	IB	IELTS
✓ Study abroad ✓ Placement	RV21	4 years	ABB	32	7.0
Hispanic Studies and History BA	UCAS	Duration	A level	IB	IELTS
✓ Study abroad ✓ Placement	VR14	4 years	ABB	32	7.0
Russian and History BA	UCAS	Duration	A level	IB	IELTS
✓ Study abroad ✓ Placement	VRB7	4 years	ABB	32	7.0
Modern European Studies BA	UCAS	Duration	A level	IB	IELTS
✓ Study abroad ✓ Placement	R906	4 years	ABB	32	7.0

Spend your third year abroad with our history and language four-year joint honours courses. Immerse yourself in the history, culture and language of your chosen country.



You might also like
Liberal Arts BA (p.70)

→ **Full course details**
Find up-to-date information and entry requirements online
nottingham.ac.uk/ugstudy

History of art and visual culture

Images are powerful tools used to communicate messages and influence our actions – political, social and commercial. The ability to ‘read’ and interpret what we see is vital in an image-saturated world.

You will examine visual media such as painting, sculpture, architecture, film, and photography, and how they are made and presented. You will also explore how these objects and images have shaped cultures and societies of the past, and their relevance to the present day.

The visual literacy and critical analysis skills you will develop are in high demand across multiple sectors, from museums and galleries to advertising, branding and communications.

Why choose Nottingham?

- Join our student-led Crop Up Gallery to curate exhibitions in spaces around Nottingham
- Explore the city’s rich creative scene including Nottingham Contemporary and our on-campus Nottingham Lakeside Arts venue
- See art and architecture in context, and develop your skills of observation and analysis, on local and international field trips



Careers

Our teaching and assessment methods require you to work collaboratively and independently, and to develop the writing, presentation, and communication skills that are highly valued in competitive work environments.

94% of undergraduates from the School of Cultures, Languages and Area Studies secured work or further study within six months of graduation. £21,000 was the average starting salary.*

History of Art BA	UCAS	Duration	A level	IB	IELTS
✓ Study abroad ✓ Placement ✓ Interview	V350	3 years	ABB	32	7.0
with Foundation	V35F	4 years	BCC	26	7.0

History and History of Art BA	UCAS	Duration	A level	IB	IELTS
✓ Study abroad ✓ Placement	VV31	3 years	ABB	32	7.0

Archaeology and History of Art BA	UCAS	Duration	A level	IB	IELTS
✓ Study abroad ✓ Placement	VV43	3 years	BBB	32-30	7.0

History of Art and English BA	UCAS	Duration	A level	IB	IELTS
✓ Study abroad ✓ Placement ✓ Interview	QV33	3 years	AAB	34	7.0

You might also like
Liberal Arts BA (p.70)

* Known destinations of full-time home undergraduates who were available for employment, 2016/17. Salaries are calculated based on the median of those in full-time paid employment within the UK.

→ **Full course details**
Find up-to-date information and entry requirements online nottingham.ac.uk/ugstudy

Languages

Language skills are in demand in the global economy. You will find a modern languages degree intellectually inspiring and personally enriching. The skills you gain will make you stand out for your flexible approach and cultural awareness.

At Nottingham we teach seven languages to degree level – French, German, Mandarin, Portuguese, Russian, Serbian/Croatian and Spanish.

You will join our vibrant community of over 1,000 students, benefit from expert language teaching and take advantage of a wide variety of optional modules.

Our specialist team will support you throughout the exciting opportunities of your third year abroad. Where will your languages take you?



Why choose Nottingham?

- Enhance your employability with language skills and cultural understanding valued in many careers
- Experience a year abroad with the expert support of our year abroad team
- Go beyond language and explore a country through its culture, media and history

Careers

You will graduate equipped to use your language skills in a range of professional and other contexts. Our graduates have careers in a diverse range of fields including finance, HR, project management, journalism, marketing, publishing, teaching and translation.

94% of undergraduates from the School of Cultures, Languages and Area Studies secured work or further study within six months of graduation. £21,000 was the average starting salary.*

* Known destinations of full-time home undergraduates who were available for employment, 2016/17. Salaries are calculated based on the median of those in full-time paid employment within the UK.

Study any one of our seven languages as a complete beginner, or from GCSE or A level

Focus on one language:

Course	UCAS	Duration	A level	IB	IELTS
French Studies BA					
✓ Study abroad ✓ Placement	R120	4 years	ABB	32	7.0
with Foundation	R12F	5 years	BCC	26	7.0
German BA					
✓ Study abroad ✓ Placement	R220	4 years	ABB	32	7.0
with Foundation	R22F	5 years	BCC	26	7.0
Hispanic Studies BA					
✓ Study abroad ✓ Placement	R410	4 years	ABB	32	7.0
with Foundation	R41F	5 years	BCC	26	7.0
Russian Studies BA					
✓ Study abroad ✓ Placement	R700	4 years	ABB	32	7.0
with Foundation	R70F	5 years	BCC	26	7.0

You might also like
Liberal Arts BA (p.70)

→ **Full course details**
Find up-to-date information and entry requirements online nottingham.ac.uk/ugstudy

Study two or three languages together:

Modern Languages BA	UCAS	Duration	A level	IB	IELTS
✓ Study abroad ✓ Placement	R900	4 years	ABB	32	7.0
with Foundation	R90F	5 years	BCC	26	7.0
Modern Language Studies BA	UCAS	Duration	A level	IB	IELTS
✓ Study abroad ✓ Placement	T900	4 years	ABB	32	7.0
with Foundation	T90F	5 years	BCC	26	7.0
Modern Languages with Translation BA	UCAS	Duration	A level	IB	IELTS
✓ Study abroad ✓ Placement	74Q9	4 years	ABB	32	7.0
with Foundation	74QF	5 years	BCC	26	7.0
French and Contemporary Chinese Studies BA	UCAS	Duration	A level	IB	IELTS
✓ Study abroad ✓ Placement	RT11	4 years	ABB	32	7.0
German and Contemporary Chinese Studies BA	UCAS	Duration	A level	IB	IELTS
✓ Study abroad ✓ Placement	RT21	4 years	ABB	32	7.0
Russian and Contemporary Chinese Studies BA	UCAS	Duration	A level	IB	IELTS
✓ Study abroad ✓ Placement	RT71	4 years	ABB	32	7.0
Spanish and Contemporary Chinese Studies BA	UCAS	Duration	A level	IB	IELTS
✓ Study abroad ✓ Placement	RT41	4 years	ABB	32	7.0



Full course details
Find up-to-date information and entry requirements online nottingham.ac.uk/ugstudy

Combine languages with another subject:

Modern European Studies BA	UCAS	Duration	A level	IB	IELTS
✓ Study abroad ✓ Placement	R906	4 years	ABB	32	7.0
Modern Languages with Business BA	UCAS	Duration	A level	IB	IELTS
✓ Study abroad ✓ Placement	R9N1	4 years	ABB	32	7.0
English and French BA	UCAS	Duration	A level	IB	IELTS
✓ Study abroad ✓ Placement	QR31	4 years	ABB	32	7.0
English and German BA	UCAS	Duration	A level	IB	IELTS
✓ Study abroad ✓ Placement	QR32	4 years	ABB	32	7.0
English and Hispanic Studies BA	UCAS	Duration	A level	IB	IELTS
✓ Study abroad ✓ Placement	QRH4	4 years	ABB	32	7.0
American Studies and Latin American Studies BA	UCAS	Duration	A level	IB	IELTS
✓ Study abroad ✓ Placement	TR7K	4 years	ABB	32	7.0
French and History BA	UCAS	Duration	A level	IB	IELTS
✓ Study abroad ✓ Placement	RV11	4 years	ABB	32	7.0
German and History BA	UCAS	Duration	A level	IB	IELTS
✓ Study abroad ✓ Placement	RV21	4 years	ABB	32	7.0

You might also like
Liberal Arts BA (p.70)

Hispanic Studies and History BA	UCAS	Duration	A level	IB	IELTS
✓ Study abroad ✓ Placement	VR14	4 years	ABB	32	7.0
Russian and History BA					
✓ Study abroad ✓ Placement	VRB7	4 years	ABB	32	7.0
History and Contemporary Chinese Studies BA					
✓ Study abroad ✓ Placement	VT11	4 years	ABB	32	7.0
French and Politics BA					
✓ Study abroad ✓ Placement	RL12	4 years	ABB	32	7.0
German and Politics BA					
✓ Study abroad ✓ Placement	RL22	4 years	ABB	32	7.0
Hispanic Studies and Politics BA					
✓ Study abroad ✓ Placement	RL42	4 years	ABB	32	7.0
French and Philosophy BA					
✓ Study abroad ✓ Placement	RV15	4 years	ABB	32	7.0
French and International Media and Communications Studies BA					
✓ Study abroad ✓ Placement	RP19	4 years	ABB	32	7.0
German and International Media and Communications Studies BA					
✓ Study abroad ✓ Placement	RP29	4 years	ABB	32	7.0

Spanish and International Media and Communications Studies BA	UCAS	Duration	A level	IB	IELTS
✓ Study abroad ✓ Placement	RP4X	4 years	ABB	32	7.0
Portuguese and International Media and Communications Studies BA					
✓ Study abroad ✓ Placement	RP5X	4 years	ABB	32	7.0
Economics with French BA					
✓ Study abroad ✓ Placement	L1R1	4 years	A*AA	38	7.0
Economics with German BA					
✓ Study abroad ✓ Placement	L1R2	4 years	A*AA	38	7.0
Economics with Hispanic Studies BA					
✓ Study abroad ✓ Placement	L1R4	4 years	A*AA	38	7.0
Law with French and French Law BA					
✓ Study abroad ✓ Placement	M1R1	4 years	AAA	36	7.0
Law with German and German Law BA					
✓ Study abroad ✓ Placement	M1R2	4 years	AAA	36	7.0
Law with Spanish and Spanish Law BA					
✓ Study abroad ✓ Placement	M1R4	4 years	AAA	36	7.0
History and East European Cultural Studies BA					
✓ Study abroad ✓ Placement	VRD7	3 years	ABB	32	7.0



Full course details
Find up-to-date information and entry requirements online nottingham.ac.uk/ugstudy

You might also like
Liberal Arts BA (p.70)

Liberal arts

Liberal arts is preparing the political, intellectual and creative innovators of the future. It encourages collaboration, interdisciplinary thinking and a global outlook.

You will receive broad training in disciplines from across the arts, humanities and social sciences. You choose the areas that suit your interests and career aspirations, complemented by core modules which allow you to explore and develop your ideas. As a result, you can offer unique perspectives and innovative solutions to complex problems.

This is a flexible course that includes opportunities to study a language and study abroad.

Subject areas available for BA Liberal Arts

American and Canadian Studies

Classics and archaeology

Education

English literature, language and creative writing

Film, media and television studies

Geography

History

History of art and visual culture

Languages

Law

Mathematics

Music

Philosophy

Politics

Psychology

Sociology

Theology and religion

Why choose Nottingham?

- Expand existing knowledge or explore new subjects as your interests develop over the course
- Gain valuable professional experience through innovative assessments, work placements and the Nottingham Advantage Award
- Work alongside dedicated liberal arts tutors who guide and support you throughout the programme

Liberal Arts BA

UCAS	Duration	A level	IB	IELTS
Y002	3-4 years	AAA	36	7.0

✓ Study abroad ✓ Placement



Careers

94% of undergraduates from the School of Cultures, Languages and Area Studies secured work or further study within six months of graduation. £21,000 was the average starting salary.*

* Known destinations of full-time home undergraduates who were available for employment, 2016/17. Salaries are calculated based on the median of those in full-time paid employment within the UK.

Full course details

Find up-to-date information and entry requirements online nottingham.ac.uk/ugstudy

Music at Nottingham provides an exciting and flexible degree. Match different subject options with professional and performance experience. Our curriculum includes a thorough grounding in musical techniques and repertoire. We also offer optional modules taught by experts in jazz, world music, electronic and classical music, film, and musical theatre.

A music degree develops skills including collaboration, creativity and communication. At Nottingham, you develop your employability with our work placement module.

There are extensive performance opportunities on campus and in Nottingham's lively music scene. You can also explore the latest digital techniques for composition, performance and recording.

Careers

Our music graduates progress to a wide range of successful careers both within and outside the music industry. Recent graduates have gone to work at the BBC, London Philharmonic Orchestra and Boosey and Hawkes.

Many have also gained employment in businesses such as Deloitte UK, Deutsche Bank and Christie's global arts auction house, and education including King's College London and the Royal College of Music.

Why choose Nottingham?

- Pathways in musicology, composition, performance and music technology
- Gain experience in performing, conducting and performance management through over 20 student ensembles, the symphony orchestra and chamber choir
- Our state-of-the-art facilities include a high-tech recording studio, digital composition suite, mobile recording rig, an orchestral-sized rehearsal hall, and a 200-seat chamber music hall

Fully-paid music tuition

All music students taking solo performance modules will receive fully-paid tuition with an experienced instrumental or vocal teacher.

Music BA	UCAS	Duration	A level	IB	IELTS
✓ Study abroad ✓ Placement	W300	3 years	ABB	32	7.0
with Foundation	W30F	4 years	BCC	26	7.0
Music and Music Technology BA	UCAS	Duration	A level	IB	IELTS
✓ Study abroad ✓ Placement	W370	3 years	ABB	32	7.0
Music and Philosophy BA	UCAS	Duration	A level	IB	IELTS
✓ Study abroad ✓ Placement	WV35	3 years	ABB	32	7.0



You might also like
Liberal Arts BA (p.70)



Full course details
Find up-to-date information and entry requirements online
nottingham.ac.uk/ugstudy

Philosophy

Philosophy plays many roles in the world. It deals with the big questions. It explores human nature and questions mainstream thinking. And it promotes fair-mindedness, constructive criticism and healthy scepticism.

Nottingham does all of this and more. We train you to engage carefully with opposing points of view – even when you think they are incorrect or incoherent.

You will cover traditional areas, like ethics, philosophy of mind, and political philosophy. You'll also explore emerging areas such as social and environmental philosophy. We teach both Western and Asian traditions from year one.

Our thinking aims to be as broad as the world we're trying to understand.

Careers

Philosophy leads to a huge range of professions. You will be equipped with key professional skills including analytical reasoning, articulating complex arguments, constructive criticism and discussion, and developing and presenting complex ideas.

Our graduates go on to work in law, politics, media, education, charities, business, management and the arts, to name just a few.

Why choose Nottingham?

- An unusually diverse range of philosophy modules: Asian, social and political, metaphysics and epistemology, feminist, art, religion, science, race and gender, and criminal law
- Gain valuable work experience in legal chambers, museums, schools, arts and creative hubs
- Our Communicating Philosophy module prepares you to communicate your ideas to people without philosophical training



Philosophy BA	UCAS	Duration	A level	IB	IELTS
✓ Study abroad ✓ Placement	V500	3 years	AAB-A*BB	34	7.0
with Foundation	V50F	4 years	BCC	26	7.0
Philosophy, Politics and Economics BA	UCAS	Duration	A level	IB	IELTS
✓ Study abroad ✓ Placement	VLL5	3 years	A*AA	38	7.0
Philosophy and Theology BA	UCAS	Duration	A level	IB	IELTS
✓ Study abroad ✓ Placement	VV56	3 years	AAB-A*BB	34	7.0
Religion, Philosophy and Ethics BA	UCAS	Duration	A level	IB	IELTS
✓ Study abroad ✓ Placement	86V4	3 years	AAB	34	7.0
with Foundation	86VF	4 years	BCC	26	7.0

You might also like
Liberal Arts BA (p.70)

→ Full course details
Find up-to-date information and entry requirements online
nottingham.ac.uk/ugstudy

Physics and Philosophy BSc	UCAS	Duration	A level	IB	IELTS
✓ Study abroad ✓ Placement	FV35	3 years	A*AA-AAA	38	7.0
<hr/>					
Economics and Philosophy BA	UCAS	Duration	A level	IB	IELTS
✓ Study abroad ✓ Placement	LV15	3 years	A*AA	38	7.0
<hr/>					
English and Philosophy BA	UCAS	Duration	A level	IB	IELTS
✓ Study abroad ✓ Placement	QV35	3 years	AAB-A*BB	34	7.0
<hr/>					
Classical Civilisation and Philosophy BA	UCAS	Duration	A level	IB	IELTS
✓ Study abroad ✓ Placement	QV85	3 years	AAB-A*BB	34	7.0
<hr/>					
French and Philosophy BA	UCAS	Duration	A level	IB	IELTS
✓ Study abroad ✓ Placement	RV15	4 years	ABB	32	7.0
<hr/>					
Philosophy and Psychology BA	UCAS	Duration	A level	IB	IELTS
✓ Study abroad ✓ Placement	V505	3 years	AAB-A*BB	34	7.0
<hr/>					
Music and Philosophy BA	UCAS	Duration	A level	IB	IELTS
✓ Study abroad ✓ Placement	WV35	3 years	ABB	32	7.0



You might also like
 Liberal Arts BA (p.70)

→ **Full course details**
 Find up-to-date information
 and entry requirements online
nottingham.ac.uk/ugstudy

Theology and religion

Religion is among the most profound, divisive, and enduring aspects of human life. Making sense of religion and its impact is essential to understanding other cultures.

You'll investigate how religious ideas, practices, and identities develop over time. You'll also explore the insights theology and ethics bring to today's big questions. We also examine the influence of religious beliefs on science, philosophy, art, and literature.

Our expertise includes both ancient and contemporary religion. Modules range across the oldest texts and philosophies to the ethics of social media. At Nottingham, you'll develop the knowledge, skills and sensitivity to engage successfully with people from all backgrounds.

Why choose Nottingham?

- Ranked in the top 10 in the UK by *The Complete University Guide 2020*
- Our broad range of modules teach philosophical, theological, historical, literary, sociological, and comparative approaches, with particular expertise in Judaism, Christianity, Islam, atheism and biblical languages
- Experience multiple student faith communities with the University's multi-faith support, student-led events like Holi on the Downs and the thriving student-run Theology Society

Careers

Recent graduates are currently working in areas such as law, public policy, strategy and consulting, banking and finance, church ministry, teaching, creative and cultural arts, journalism, advertising and communications, and psychology and counselling.

95% of undergraduates from the School of Humanities secured work or further study within six months of graduation. £20,000 was the average starting salary.*

* Known destinations of full-time home undergraduates who were available for employment, 2016/17. Salaries are calculated based on the median of those in full-time paid employment within the UK.



Course	UCAS	Duration	A level	IB	IELTS
Theology and Religious Studies BA					
✓ Study abroad ✓ Placement	V610	3 years	ABB	32	7.0
with Foundation	V61F	4 years	BCC	26	7.0
Religion, Culture and Ethics BA					
✓ Study abroad ✓ Placement	13V6	3 years	ABB	32	7.0
Biblical Studies and Theology BA					
✓ Study abroad ✓ Placement	1V54	3 years	ABB	32	7.0
Religion, Philosophy and Ethics BA					
✓ Study abroad ✓ Placement	86V4	3 years	AAB	34	7.0
with Foundation	86VF	4 years	BCC	26	7.0
Philosophy and Theology BA					
✓ Study abroad ✓ Placement	VV56	3 years	AAB-A*BB	34	7.0

You might also like
 Liberal Arts BA (p.70)

→ **Full course details**
 Find up-to-date information and entry requirements online nottingham.ac.uk/ugstudy

Aerospace engineering

Interested in the science behind flying and want to find out more about aircraft design and manufacture? Our course will help you learn the skills and gain advanced knowledge needed to work in this exciting industry.

We cover all areas of aerospace including avionics, human factors, aerodynamics and flight mechanics. You'll benefit from great industrial links with companies such as Airbus, Rolls-Royce Aerospace and BAE Systems.

Why choose Nottingham?

- Get hands-on with the latest aerospace equipment including wind tunnels, a flight simulator and local flying lessons
- Our courses are taught by world-leading aerospace researchers
- You'll benefit from our personal tutor system, meaning you will always have close contact with someone to support your needs



Aerospace Engineering

BEng/MEng	UCAS	Duration	A level	IB	IELTS	
✓ Study abroad	BEng	H402	3 years	AAA-AAB	36-34	6.0
	MEng	H400	4 years	A*AA-AAA	38-36	6.0

Aerospace Engineering with Industrial Year BEng/MEng

BEng/MEng	UCAS	Duration	A level	IB	IELTS	
✓ Study abroad ✓ Placement	BEng	H40A	4 years	AAA-AAB	36-34	6.0
	MEng	H40B	5 years	A*AA-AAA	38-36	6.0

Careers

During your degree, you will learn how to analyse and problem solve, work in a team and be creative with inventive thinking. Our teaching is based on research funded by Airbus, BAE Systems and Rolls-Royce. These strong links with industry see our graduates go on to work for global companies across a range of technical and managerial jobs.*

Full course details

Find up-to-date information and entry requirements online nottingham.ac.uk/ugstudy

* All careers data is sourced from the Destination of Leavers from Higher Education, 2016/17 (HESA 2018).

Architecture and built environment

The spaces where we live, work and relax are designed by people who have followed careers in architecture or building services engineering.

Our courses will give you the knowledge needed to design spaces that improve our surroundings. We also look at how to create new, or improve existing, buildings through environmental design. With a mixture of teaching through workshops, field trips and working with real customers on projects, our courses give you the skills that industry looks for.

We were voted the 3rd best architecture school in the UK by Architects Journal 2018/19.

Why choose Nottingham?

- Ranked 6th in the UK for building in *The Complete University Guide 2020*
- Field trips to Europe are an essential part of our BArch Architecture and MEng Architecture and Environmental Design courses
- Our students have designed and built a new community project in South Africa for the last 10 years as part of the course

Careers

An architecture degree is the first stage to becoming a registered architect. It's also a degree that employers look for in construction, property, design and creative roles.

Our graduates have gone on to work for a range of top UK and international companies. These include construction firms such as Atkins, Arup and Laing O'Rourke and regional consultancies such as Pick Everard, Preston Barber and Long & Partners.



Architecture BArch	UCAS	Duration	A level	IB	IELTS
✓ Study abroad ✓ Accredited	K100	3 years	AAA	36	6.5
Architecture (ARB RIBA Part 2) MArch	UCAS	Duration	Degree		IELTS
✓ Study abroad ✓ Accredited	K10I	2 years	2:1 Part 1 degree		6.5
Architecture with Collaborative Practice Research (ARB RIBA Part 2) MArch	UCAS	Duration	Degree		IELTS
✓ Study abroad ✓ Accredited	K10H	2 years	2:1 Part 1 degree		6.5
Architectural Environment Engineering BEng/MEng	UCAS	Duration	A level	IB	IELTS
✓ Study abroad ✓ Accredited*	BEng K240	3 years	AAB-ABB	34-32	6.5
	MEng K241	4 years	AAA	36	6.5
Architectural Environment Engineering with Industrial Placement BEng/MEng	UCAS	Duration	A level	IB	IELTS
✓ Study abroad ✓ Placement ✓ Accredited*	BEng K24B	4 years	AAB-ABB	34-32	6.5
	MEng K24A	5 years	AAA	36	6.5
Architecture and Environmental Design MEng	UCAS	Duration	A level	IB	IELTS
✓ Study abroad ✓ Accredited	K230	4 years	AAA	36	6.5

* Pending accreditation at time of print, please see online for the latest information on our accreditation status.

→ **Full course details**
Find up-to-date information and entry requirements online nottingham.ac.uk/ugstudy

Chemical and environmental engineering

As our population grows, we need to produce new things in a smarter, safer and cleaner way while protecting our natural resources. At Nottingham, you will gain the engineering knowledge and professional skills to design processes that make the products we all rely on.

All our courses have the same content in year one so that you can then choose either one of the chemical, environmental or chemical with environmental engineering courses.

Our graduates go on to work solving diverse challenges across clean energy, climate change, clean air and water, food and healthy living.

Why choose Nottingham?

- Ranked 3rd in the UK for chemical engineering in *The Guardian University Guide 2020*
- Customise your degree to suit your interests
- Get paid experience with a year out in industry

Careers

Most of our students go on to work as chemical or environmental engineers, with many working towards becoming chartered engineers as they progress through their careers.

Some engineering graduates use their degree to access careers outside of chemical engineering like banking and project management. Alumni have secured jobs with Barclays, Deloitte and Sky.

→ **Full course details**
Find up-to-date information and entry requirements online nottingham.ac.uk/ugstudy



Chemical Engineering BEng/MEng		UCAS	Duration	A level	IB	IELTS
✓ Study abroad	✓ Accredited	BEng	H810	3 years	A*AA-AAA	36 6.0
		MEng	H800	4 years	A*AA-AAA	36 6.0

Chemical Engineering with Industrial Year BEng/MEng		UCAS	Duration	A level	IB	IELTS
✓ Study abroad	✓ Placement	BEng	H81B	4 years	A*AA-AAA	36 6.0
✓ Accredited		MEng	H81D	5 years	A*AA-AAA	36 6.0

Environmental Engineering BEng/MEng		UCAS	Duration	A level	IB	IELTS
✓ Study abroad	✓ Accredited	BEng	H806	3 years	A*AA-AAA	36 6.0
		MEng	H805	4 years	A*AA-AAA	36 6.0

Environmental Engineering with Industrial Year BEng/MEng		UCAS	Duration	A level	IB	IELTS
✓ Study abroad	✓ Placement	BEng	H808	4 years	A*AA-AAA	36 6.0
✓ Accredited		MEng	H80X	5 years	A*AA-AAA	36 6.0

Chemical with Environmental Engineering BEng/MEng		UCAS	Duration	A level	IB	IELTS
✓ Study abroad	✓ Accredited	BEng	H8HF	3 years	A*AA-AAA	36 6.0
		MEng	H8H2	4 years	A*AA-AAA	36 6.0

Chemical with Environmental Engineering with Industrial Year BEng/MEng		UCAS	Duration	A level	IB	IELTS
✓ Study abroad	✓ Placement	BEng	HVH2	4 years	A*AA-AAA	36 6.0
✓ Accredited		MEng	H8HD	5 years	A*AA-AAA	36 6.0

Civil engineering

Civil engineers design and manage projects that help improve the world we live in. On our course, you'll learn about structures, geotechnics, materials, fluids, surveying and construction management. You'll study through lectures, workshops, lab work, projects and field trips.

We work with local engineering professionals who will help with site visits and give you advice. You may get the opportunity to work towards becoming a chartered engineer through work experience with well-known civil engineering companies.

Why choose Nottingham?

- Ranked 9th in the UK for civil engineering in *The Times* and *The Sunday Times Good University Guide 2020*
- Get paid experience with a year out in industry
- Be trained in industry standard techniques and practices



Civil Engineering BEng/MEng

	UCAS	Duration	A level	IB	IELTS
✓ Study abroad ✓ Accredited	BEng H201	3 years	AAB	34	6.0
	MEng H200	4 years	AAA	36	6.0

Civil Engineering with Industrial Year BEng

	UCAS	Duration	A level	IB	IELTS
✓ Study abroad ✓ Placement ✓ Accredited	BEng H20A	4 years	AAB	34	6.0
	MEng H20B	5 years	AAA	36	6.0

Careers

Most of our civil engineering students go on to work as graduate civil or structural engineers. Many graduates work towards chartership with the Institution of Civil Engineers (ICE) or other professional bodies as they progress through their careers.

Some engineering graduates continue onto further study while others move into jobs outside of civil engineering. Recent alumni have secured jobs with AECOM, Network Rail, Deloitte and Sky.

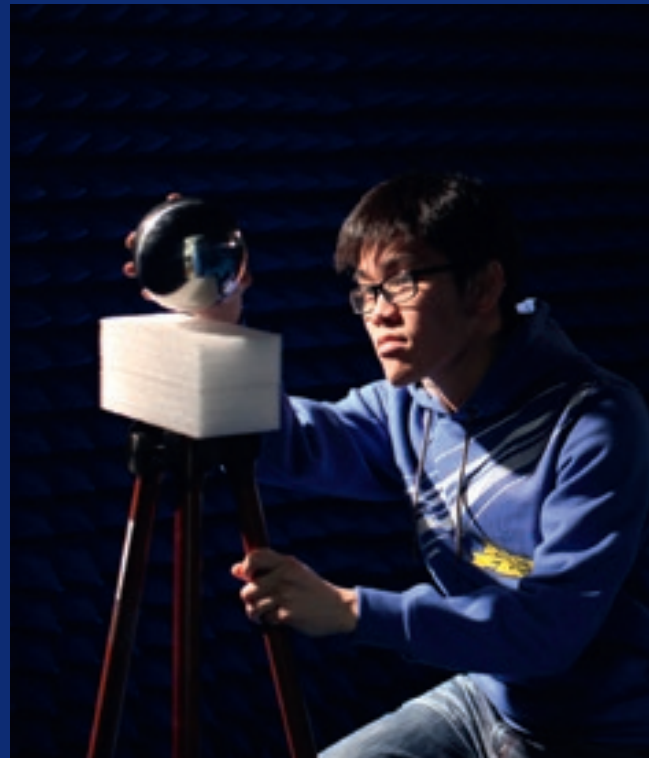
Full course details

Find up-to-date information and entry requirements online nottingham.ac.uk/ugstudy

Electrical and electronic engineering

Electrical and electronic engineers design, develop, test and oversee the creation of anything from drones and electric cars to the technology in smartphones, sat navs and systems in hospitals.

All our courses have the same content in year one and two so by year three, you can choose the topics that interest you. You'll spend time in labs working individually and in group projects. Our graduates go on to work in a wide range of careers in engineering, business, education, finance and IT.



Why choose Nottingham?

- Ranked 1st in the UK for electrical and electronic engineering in *The Guardian University Guide 2020*
- Practical, lab-based sessions to help you develop skills for your future career
- Customise your degree to suit your interests with a wide selection of optional modules

Careers

100% of undergraduates from the department who were available for employment had secured work or further study within six months of graduation. The average starting salary was £26,750.*

* Known destinations of full-time home undergraduates, 2016/17. Salaries are calculated based on the median of those in full-time paid employment within the UK.

Electrical Engineering BEng/MEng

	UCAS	Duration	A level	IB	IELTS
✓ Study abroad ✓ Interview ✓ Accredited	BEng H622	3 years	AAA-ABB	36-32	6.0
	MEng H601	4 years	AAA-ABB	36-32	6.0

Electrical Engineering with Industrial Year BEng/MEng

	UCAS	Industrial year	Duration	A level	IB	IELTS
✓ Study abroad ✓ Placement ✓ Interview ✓ Accredited	BEng H62A	Year 2	4 years	AAA-ABB	36-32	6.0
	MEng H62B	Year 3	5 years	AAA-ABB	36-32	6.0
	MEng H62C	Year 4	5 years	AAA-ABB	36-32	6.0

Electrical Engineering with Year Abroad BEng/MEng

	UCAS	Year abroad	Duration	A level	IB	IELTS
✓ Study abroad ✓ Interview ✓ Accredited	BEng H62W	Year 2	3 years	AAA-ABB	36-32	6.0
	MEng H62U	Year 2	4 years	AAA-ABB	36-32	6.0
	MEng H62V	Year 3	4 years	AAA-ABB	36-32	6.0

Electronic Engineering BEng/MEng

	UCAS	Duration	A level	IB	IELTS
✓ Study abroad ✓ Interview ✓ Accredited	BEng H612	3 years	AAA-ABB	36-32	6.0
	MEng H610	4 years	AAA-ABB	36-32	6.0

Electronic Engineering with Industrial Year BEng/MEng

	UCAS	Industrial year	Duration	A level	IB	IELTS
✓ Study abroad ✓ Placement ✓ Interview ✓ Accredited	BEng H61A	Year 3	4 years	AAA-ABB	36-32	6.0
	MEng H61B	Year 3	5 years	AAA-ABB	36-32	6.0
	MEng H61C	Year 4	5 years	AAA-ABB	36-32	6.0

→ Full course details
Find up-to-date information and entry requirements online nottingham.ac.uk/ugstudy



Electronic and Computer Engineering with Year Abroad BEng/MEng

	UCAS	Year abroad	Duration	A level	IB	IELTS
✓ Study abroad ✓ Interview ✓ Accredited	BEng	H61Z	Year 2	3 years	AAA-ABB	36-32 6.0
	MEng	H61X	Year 2	4 years	AAA-ABB	36-32 6.0
	MEng	H61Y	Year 3	4 years	AAA-ABB	36-32 6.0

Electrical and Electronic Engineering BEng/MEng

	UCAS	Duration	A level	IB	IELTS
✓ Study abroad ✓ Interview ✓ Accredited	BEng	H603	3 years	AAA-ABB	36-32 6.0
	MEng	H600	4 years	AAA-ABB	36-32 6.0

Electrical and Electronic Engineering with Industrial Year BEng/MEng

	UCAS	Industrial year	Duration	A level	IB	IELTS
✓ Study abroad ✓ Placement ✓ Interview ✓ Accredited	BEng	H60A	Year 3	4 years	AAA-ABB	36-32 6.0
	MEng	H60B	Year 3	5 years	AAA-ABB	36-32 6.0
	MEng	H60C	Year 4	5 years	AAA-ABB	36-32 6.0

Electrical and Electronic Engineering with Year Abroad BEng/MEng

	UCAS	Year abroad	Duration	A level	IB	IELTS
✓ Study abroad ✓ Interview ✓ Accredited	BEng	H606	Year 2	3 years	AAA-ABB	36-32 6.0
	MEng	H605	Year 2/3	4 years	AAA-ABB	36-32 6.0

Electronic Engineering with Year Abroad BEng/MEng

	UCAS	Year abroad	Duration	A level	IB	IELTS
✓ Study abroad ✓ Interview ✓ Accredited	BEng	H61W	Year 2	3 years	AAA-ABB	36-32 6.0
	MEng	H61U	Year 2	4 years	AAA-ABB	36-32 6.0
	MEng	H61V	Year 3	4 years	AAA-ABB	36-32 6.0

Electronic and Computer Engineering BEng/MEng

	UCAS	Duration	A level	IB	IELTS
✓ Study abroad ✓ Interview ✓ Accredited	BEng	H613	3 years	AAA-ABB	36-32 6.0
	MEng	H611	4 years	AAA-ABB	36-32 6.0

Electronic and Computer Engineering with Industrial Year BEng/MEng

	UCAS	Industrial year	Duration	A level	IB	IELTS
✓ Study abroad ✓ Placement ✓ Interview ✓ Accredited	BEng	H61G	Year 3	4 years	AAA-ABB	36-32 6.0
	MEng	H61H	Year 3	5 years	AAA-ABB	36-32 6.0
	MEng	H61I	Year 4	5 years	AAA-ABB	36-32 6.0

→ **Full course details**
Find up-to-date information and entry requirements online nottingham.ac.uk/ugstudy

Mechanical, materials and manufacturing engineering

Our courses cover the essential engineering skills that top global companies are looking for in graduates. If you choose to study mechanical or manufacturing engineering, you will learn about 3D printing, design, solid and fluid mechanics, thermodynamics, vibration, control and mechatronics.

If you're looking to do product design and manufacture, you will learn skills including perspective sketching, design techniques, ergonomics, virtual reality and project management. You will have access to well-equipped labs and workshops to help with the hands-on parts of the course – all of which help you work towards becoming a Chartered Engineer.

Why choose Nottingham?

- Ranked 7th in the UK for mechanical engineering in *The Guardian University Guide 2020*
- Get paid experience with a year out in industry
- Customise your degree to suit your interests with a wide selection of optional modules



Manufacturing Engineering BEng/MEng

	UCAS	Duration	A level	IB	IELTS
✓ Accredited	BEng H708	3 years	AAB	34	6.0
	MEng H707	4 years	A*AA-AAA	38-36	6.0

Manufacturing Engineering with Industrial Year BEng/MEng

	UCAS	Duration	A level	IB	IELTS
✓ Placement ✓ Accredited	BEng H70A	4 years	AAB	34	6.0
	MEng H70B	5 years	A*AA-AAA	38-36	6.0

Mechanical Engineering BEng/MEng

	UCAS	Duration	A level	IB	IELTS
✓ Accredited	BEng H302	3 years	AAB	34	6.0
	MEng H300	4 years	A*AA-AAA	38-36	6.0

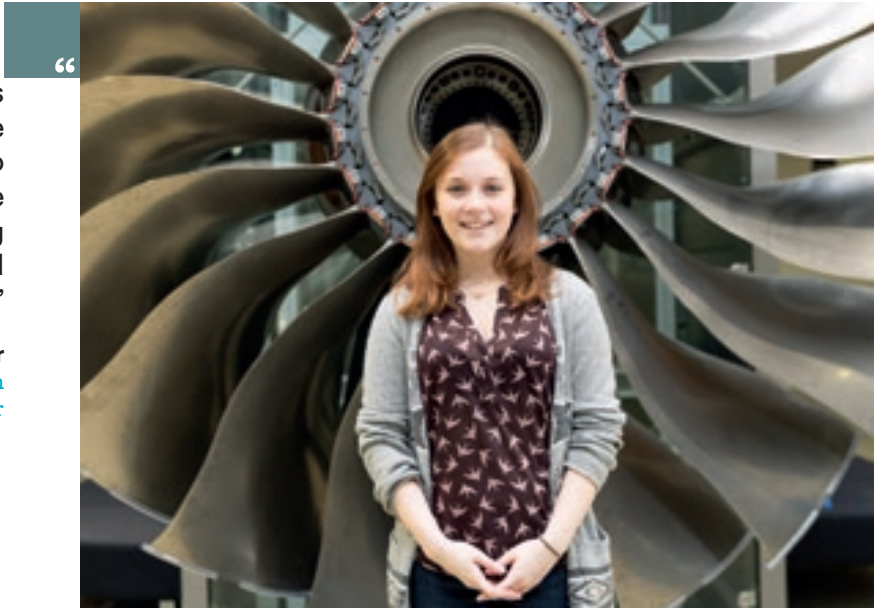
Careers

During your degree, you will learn how to analyse and problem solve, work in a team, and be creative with inventive thinking. This knowledge and experience will prepare you for careers in transport, energy, healthcare and construction. Alumni have secured roles with BP, General Electric, Jaguar Land Rover and Rolls-Royce.

→ **Full course details**
 Find up-to-date information and entry requirements online nottingham.ac.uk/ugstudy

“One of the best aspects of my course is being able to use the workshops to make the designs we have created. It’s really exciting to apply my knowledge and skills to real-life projects.”

Louise Wheeler
 MEng Mechanical Engineering with an Industrial Placement Year



Product Design and Manufacture with Industrial Year MEng/BEng

	UCAS	Duration	A level	IB	IELTS
✓ Study abroad ✓ Placement ✓ Accredited	BEng H71A	4 years	AAB-ABB	34-32	6.0
	MEng H71B	5 years	AAA-AAB	36-34	6.0

Product Design and Manufacture with Year Abroad BEng/MEng

	UCAS	Duration	A level	IB	IELTS
✓ Study abroad ✓ Accredited	BEng H71X	3 years	AAB-ABB	34-32	6.0
	MEng H71Y	4 years	AAA-AAB	36-34	6.0

Mechanical Engineering with Industrial Year BEng/MEng

	UCAS	Duration	A level	IB	IELTS
✓ Study abroad ✓ Placement ✓ Accredited	BEng H30A	4 years	AAB	34	6.0
	MEng H30C	5 years	A*AA-AAA	38-36	6.0

Mechanical Engineering with Year Abroad BEng/MEng

	UCAS	Year abroad	Duration	A level	IB	IELTS
✓ Study abroad ✓ Accredited	BEng H30W	Year 2	3 years	AAB	34	6.0
	MEng H30U	Year 2	4 years	A*AA-AAA	38-36	6.0
	MEng H30V	Year 3	4 years	A*AA-AAA	38-36	6.0

Product Design and Manufacture BEng/MEng

	UCAS	Duration	A level	IB	IELTS
✓ Accredited	BEng H700	3 years	AAB-ABB	34-32	6.0
	MEng H715	4 years	AAA-AAB	36-34	6.0



Full course details
 Find up-to-date information and entry requirements online
nottingham.ac.uk/ugstudy

Medical sites

Gain experience in major hospitals and healthcare facilities in the region.

Use our links with local hospitals, general practices and veterinary hospitals, as well as private and voluntary organisations to access varied opportunities for you to interact with patients and/or clients while on placement.



Queen's Medical Centre
Located opposite University Park Campus, Queen's Medical Centre is home to our dedicated Medical School with clinical skills facilities, a dissection suite and laboratories for medicine and healthcare subject teaching.

Nottingham City Hospital
The majority of teaching for physiotherapy and sports rehabilitation students is in our purpose-built Clinical Sciences Building, which includes a human performance laboratory.



Lincoln Medical School
If you're studying medicine at Lincoln, you will benefit from new clinical skills facilities, and placements in hospitals and primary care settings across Lincolnshire.



Royal Derby Hospital
Medical physiology and therapeutics, foundation medicine and graduate entry medicine students will use these facilities. A bus runs between University Park Campus and the hospital.

Biochemistry

Be part of the next generation of biochemists to make an impact on our world. Practical lab-based sessions and lectures will help you develop the necessary skills to launch your career.

Most of our courses feature optional modules and opportunities which allow you to train with experts in a range of biological sciences, such as genetics, neuroscience and biology.

Why choose Nottingham?

- Be trained in industry-standard techniques and practices
- Our tutors are at the forefront of cutting-edge research, with teaching based on the latest findings
- Most of our courses allow you to increase your employability and skills by studying abroad at our campus in Malaysia



Careers

These degrees provide you with career opportunities in pharmaceutical and scientific healthcare, science communications and media, as well as in national and international research. Some of our alumni have become food analysts, cellular pathologists, medical laboratory analysts and technical assistants*.

Biochemistry BSc/MSci

	UCAS	Duration	A level	IB	IELTS
✓ Study abroad ✓ Placement	BSc C700	3 years	AAB	34	6.5
	MSci C703	4 years	AAB	34	6.5

Biochemistry and Biological Chemistry BSc/MSci

	UCAS	Duration	A level	IB	IELTS
✓ Placement	BSc C720	3 years	AAB	34	6.5
	MSci C721	4 years	AAB	34	6.5

Biochemistry and Genetics BSc/MSci

	UCAS	Duration	A level	IB	IELTS
✓ Study abroad ✓ Placement	BSc CC47	3 years	AAB	34	6.5
	MSci CC4R	4 years	AAB	34	6.5

Biochemistry and Molecular Medicine BSc/MSci

	UCAS	Duration	A level	IB	IELTS
✓ Study abroad ✓ Placement	BSc C741	3 years	AAB	34	6.5
	MSci C742	4 years	AAB	34	6.5

* All careers data is sourced from the Destination of Leavers from Higher Education, 2016/17 (HESA 2018).

→ **Full course details**
Find up-to-date information and entry requirements online nottingham.ac.uk/ugstudy

Biomedical sciences and health

We offer courses for students interested in studying a broad range of subjects within the biomedical sciences, with an emphasis on improving lives. You will gain skills that open employment opportunities in a variety of scientific and clinical fields.

Our innovative degrees allow a unique combination of subjects within medical and health sciences, including biology, cell biology, biomechanics, cancer and human physiology.

The curriculum also provides a firm base for further study in allied medicine and health subjects including our graduate entry medicine degree.

Why choose Nottingham?

- Be taught by internationally recognised tutors who specialise in associated biomedical, health and sport fields
- Experience working on real-world scientific research and practise with lab-based learning
- Develop your practical skills in our anatomy suite and labs, including the biomechanics labs in the £40 million David Ross Sports Village, or in our Centre for Cancer Sciences housed in a new £25 million facility

Careers

98.5% of undergraduates in the Faculty of Medicine and Health Sciences who were available for employment had secured work or further study within six months of graduation.*

Cancer Sciences BSc/MSci	UCAS	Duration	A level	IB	IELTS	
BSc	B131	3 years	ABB	34	6.5	
✓ Study abroad ✓ Placement ✓ Interview	MSci	B130	4 years	AAA	36	6.5

Medical Physiology and Therapeutics BSc	UCAS	Duration	A level	IB	IELTS
	B121	3 years	AAB-ABB	34-32	6.5

Sport and Exercise Science BSc	UCAS	Duration	A level	IB	IELTS
✓ Placement	C600	3 years	AAB-ABB	34	6.5



* Known destinations of full-time home undergraduates, 2016/17.

→ **Full course details**
 Find up-to-date information and entry requirements online nottingham.ac.uk/ugstudy

Medicine

All of our courses equip you with the professional knowledge, skills and behaviour to allow you to graduate with the Bachelor of Medicine and Bachelor of Surgery (BMBS) degree and to practise as a new doctor on the UK Foundation Programme.

We work with NHS Trusts and general practices across Nottinghamshire, Derbyshire and Lincolnshire to widen your clinical experience across a comprehensive range of placements.

Our five and six year undergraduate degrees offer an integrated BMedSci, which includes a supervised research project, resulting in an additional degree. You can tailor your chosen topic to your interests and future career aspirations.

Why choose Nottingham?

- Benefit from early clinical experience integrated with case-based teaching on the five and six year courses or problem-based learning on the graduate entry course
- Be taught by clinicians who work in a diverse range of disciplines and provide excellent care to patients using the latest technology
- Be part of a medical community with well-established links with NHS Trusts and general practices across the East Midlands
- All of our medicine programmes are accredited by the General Medical Council (GMC)



Careers

100% of undergraduates in the school who were available for employment had secured work or further study within six months of graduation. The average starting salary was £30,000.*

Medicine BMedSci BMBS	UCAS	Duration	A level	IB	IELTS
✓ Study abroad ✓ Placement ✓ Interview ✓ Accredited	A100	5 years	AAA	36	7.5

Medicine with a Foundation Year BMedSci BMBS	UCAS	Duration	A level	IB	IELTS
✓ Study abroad ✓ Placement ✓ Interview ✓ Accredited	A108	6 years	BBC	28	7.5

Medicine at Lincoln BMedSci BMBS	UCAS	Duration	A level	IB	IELTS
✓ Study abroad ✓ Placement ✓ Interview ✓ Accredited	A10L	5 years	AAA	36	7.5

Medicine at Lincoln with a Foundation Year BMedSci BMBS	UCAS	Duration	A level	IB	IELTS
✓ Study abroad ✓ Placement ✓ Interview ✓ Accredited	A18L	6 years	BBC	28	7.5

Graduate Entry Medicine BMBS	UCAS	Duration	Degree	IELTS
✓ Study abroad ✓ Placement ✓ Interview ✓ Accredited	A101	4 years	2:2	7.5

* Known destinations of full-time home undergraduates, 2016/17. Salaries are calculated based on the median of those in full-time paid employment within the UK.

→ **Full course details**
 Find up-to-date information and entry requirements online nottingham.ac.uk/ugstudy

Nursing and midwifery

We develop your practical and professional skills by combining research-based learning with varied clinical experience.

Nursing

We prepare you for a modern nursing career, building your knowledge, resilience and skills in a supportive environment to prepare you for practice. Our student nurses have been recognised nationally at the Student Nursing Times Awards.

Midwifery

From year one, you will experience case-holding, where you will deliver continuity of care throughout the pregnancy journey. You will also have the opportunity to undertake the Newborn and Infant Physical Examination award which may enhance your future employability.

Why choose Nottingham?

- Excellent reputation for delivering healthcare teaching and research, leading to registration with the Nursing and Midwifery Council
- Build your confidence and develop key leadership skills with support from our healthcare experts
- Experience diverse placements, with the option to undertake a placement overseas

Careers

98.6% of undergraduates in the School of Health Sciences who were available for employment had secured work or further study within six months of graduation.*

* Known destinations of full-time home undergraduates, 2016/17.

Midwifery BSc

	UCAS	Duration	A level	IB	IELTS
✓ Study abroad ✓ Interview	B723	3 years	ABB	32	7.5
✓ Placement ✓ Accredited					

Nursing BSc

	UCAS	Duration	A level	IB	IELTS
✓ Study abroad ✓ Interview	Adult B740	3 years	BBB	30	7.0
✓ Placement ✓ Accredited	Child B730	3 years	BBB	30	7.0
	Mental Health B767	3 years	BBB	30	7.0

Graduate Entry Nursing MSc

	UCAS	Duration	Degree	IELTS
✓ Study abroad ✓ Interview	Adult -	2 years	2:2	7.0
✓ Placement ✓ Accredited	Child -	2 years	2:2	7.0
	Learning Disability -	2 years	2:2	7.0
	Mental Health -	2 years	2:2	7.0



→ **Full course details**
 Find up-to-date information and entry requirements online nottingham.ac.uk/ugstudy

■ Physiotherapy and sport rehabilitation

As a student physiotherapist or sport rehabilitator, you will be part of a small division with a strong support network.

Patient-focus is at the core of our physiotherapy degree. You will learn to evaluate and adapt your therapeutic skills to meet the needs of the individual through hands-on clinical experience in NHS hospitals and community settings.

Our sport rehabilitation degree equips you to work independently with athletes across a range of practical placements in sporting and exercise environments. You will also have the opportunity to contribute to the running of our Sports Injury Clinic.

Why choose Nottingham?

- Teaching is mixed with clinical practice, giving hands-on context to what you learn
- Work closely with other healthcare students to enrich your learning
- Personalise your learning through optional modules in year three and the opportunity to undertake an international placement

Careers

You will develop your knowledge and skills to work in careers across healthcare, sport or leisure industries.

98.6% of undergraduates in the School of Health Sciences who were available for employment had secured work or further study within six months of graduation.*

Physiotherapy BSc	UCAS	Duration	A level	IB	IELTS
✓ Study abroad ✓ Placement ✓ Interview ✓ Accredited	B160	3 years	AAB	34	7.5

Sport Rehabilitation BSc	UCAS	Duration	A level	IB	IELTS
✓ Study abroad ✓ Placement ✓ Accredited	C630	3 years	ABB	32	7.5



* Known destinations of full-time home undergraduates, 2016/17.

→ **Full course details**
 Find up-to-date information and entry requirements online nottingham.ac.uk/ugstudy

Veterinary medicine and science

Our veterinary education provides an outstanding student experience, with teaching delivered in a progressive and dynamic environment. You will study a highly practical and clinically integrated course, with animal handling and clinical experience from day one. There is also a strong professional skills element throughout the course, preparing you for your future career.

We have innovative teaching and purpose-built veterinary facilities on our Sutton Bonington Campus. You'll also gain real-world experience at our local Clinical Associates, such as veterinary practices, animal charities, farms, and zoos.

Why choose Nottingham?

- Be part of an award-winning UK veterinary school with 97% student satisfaction, based on the National Student Survey 2019
- Gain hands-on clinical experience from day one, integrated with a research project and the additional award of BVMedSci
- Benefit from a September or April intake, giving you flexibility over when you start your studies, reduced class sizes, and more placement opportunities



Careers

The veterinary profession offers diverse and stimulating career opportunities combined with the privilege of working with animals.

98.1% of undergraduates in the school who were available for employment had secured work or further study within six months of graduation. The average starting salary was £30,000.*

Veterinary Medicine and Surgery

BVM BVS BVMedSci	UCAS	Duration	A level	IB	IELTS
✓ Placement ✓ Accredited	D100	5 years	AAB	34	7.5

Veterinary Medicine and Surgery including a Gateway Year (UK students only)

BVM BVS BVMedSci	UCAS	Duration	A level	IB	IELTS
✓ Placement ✓ Accredited	D190	6 years	BBC	28	–

Veterinary Medicine and Surgery including a Preliminary Year

BVM BVS BVMedSci	UCAS	Duration	A level	IB	IELTS
✓ Placement ✓ Accredited	D104	6 years	AAB	34	7.5

* Known destinations of full-time home undergraduates, 2016/17. Salaries are calculated based on the median of those in full-time paid employment within the UK.

→ **Full course details**
 Find up-to-date information and entry requirements online nottingham.ac.uk/ugstudy

Agriculture and animal sciences

Our agricultural courses build your skills in science and business management. We focus on applying your learning to real-life situations, with practical knowledge gained on our University Farm. You can grow your own crop or manage a student sheep flock. Our degrees tackle issues in sustainable agriculture and food security.

Studying animal science focuses on the health, productivity and care of managed animals. At Nottingham you can choose modules based on your interests. Study options in bioveterinary science, physiology and biotechnology, livestock production, or ecology and conservation. You'll apply your scientific knowledge from lectures in practical sessions and field trips.



Why choose Nottingham?

- Ranked 1st for our agriculture and animal science courses for a third year running in *The Complete University Guide 2020*
- Learn the latest developments from subject specialists and active researchers
- Work with industry to get exposure to business and graduate with the skills to be career ready

Careers

Agricultural roles include specialist consultancy positions, agronomy, supply chain and agri-food management, and farm management. Animal science opens options in para-veterinary sciences, the pharmaceutical and biotech industries, animal nutrition, and research or further study.

95% of undergraduates in the School of Biosciences secured work or further study within six months of graduation.*

* Known destinations of full-time home undergraduates who were available for employment, 2016/17. All careers data is sourced from the Destination of Leavers from Higher Education, 2016/17 (HESA 2018).

Agriculture BSc	UCAS	Duration	A level	IB	IELTS
✓ Study abroad ✓ Placement	D400	3 years	ABB-BBB	32-30	6.0

Agricultural and Crop Science BSc	UCAS	Duration	A level	IB	IELTS
✓ Study abroad ✓ Placement	D409	3 years	ABB-BBB	32-30	6.0

Agricultural and Livestock Science BSc	UCAS	Duration	A level	IB	IELTS
✓ Study abroad ✓ Placement	D420	3 years	ABB-BBB	32-30	6.0

Integrated Agricultural Business Management BSc	UCAS	Duration	A level	IB	IELTS
✓ Study abroad ✓ Placement	D40A	3 years	ABB-BBB	32-30	6.0

International Agricultural Science BSc	UCAS	Duration	A level	IB	IELTS
✓ Study abroad ✓ Placement ✓ Interview	D703	3 years	AAB-ABB	34-32	6.0

Animal Science BSc/MSci	UCAS	Duration	A level	IB	IELTS	
✓ Study abroad ✓ Placement	BSc	D320	3 years	ABB-BBB	32-30	6.0
	MSci	D322	4 years	ABB-BBB	32-30	6.0

→ **Full course details**
Find up-to-date information and entry requirements online nottingham.ac.uk/ugstudy

Biological sciences

Be part of the next generation of scientists. Make an impact on our world fighting diseases, conserving species, innovating new biotech solutions and improving lives. Our courses balance scientific theory and practice using specialist laboratories.

You will access the latest research and pioneering techniques from our teaching team. You can experience an international perspective by adding a study abroad option. This could include the University of Nottingham Malaysia.

Potential careers include stem-cell research, research into antibiotic resistance or infectious disease, and pharmaceutical and food industry scientists. You could even end up working for NASA on microbial contamination of spaceflight.



Why choose Nottingham?

- Build on your experience with our industry placements, fieldwork trips and study abroad opportunities
- Access dedicated facilities, such as research labs, biological imaging equipment, and the Super Lab
- Be taught the most up-to-date subject thinking by academics at the forefront of international research

Careers

You could work in research, industry, universities or hospitals, across food, pharmaceutical, healthcare, conservation, environmental and energy sectors. These degrees can lead to further study or research degrees in specialist areas.

95% of undergraduates in the School of Biosciences and 96.5% of undergraduates in the School of Life Sciences secured work or further study within six months of graduation.*

* Known destinations of full-time home undergraduates who were available for employment, 2016/17.

Biology BSc/MSci

	UCAS	Duration	A level	IB	IELTS
✓ Study abroad ✓ Placement	BSc C100	3 years	AAB	34	6.5
	MSci C101	4 years	AAB	34	6.5

Biotechnology BSc/MSci

	UCAS	Duration	A level	IB	IELTS
✓ Study abroad ✓ Placement ✓ Accredited	BSc J700	3 years	ABB-BBB	32-30	6.0
✓ Study abroad ✓ Placement	MSci J703	4 years	ABB-BBB	32-30	6.0

→ **Full course details**
Find up-to-date information and entry requirements online nottingham.ac.uk/ugstudy



“ I chose biotechnology as it is such a diverse field, and the course at Nottingham allows you to very specifically tailor your studies towards the field you are interested in the most.”

Sam Garvey
BSc Biotechnology



Genetics BSc/MSci		UCAS	Duration	A level	IB	IELTS
✓ Study abroad	✓ Placement	BSc C400	3 years	AAB	34	6.5
		MSci C401	4 years	AAB	34	6.5
Microbiology BSc		UCAS	Duration	A level	IB	IELTS
✓ Study abroad	✓ Placement	C501	3 years	AAB-ABB	34-32	6.0
Plant Science BSc/MSci		UCAS	Duration	A level	IB	IELTS
✓ Study abroad	✓ Placement	BSc C200	3 years	AAB-ABB	34-32	6.0
		MSci C203	4 years	AAB-ABB	34-32	6.0
Zoology BSc/MSci		UCAS	Duration	A level	IB	IELTS
✓ Study abroad	✓ Placement	BSc C300	3 years	AAB	34	6.5
		MSci C301	4 years	AAB	34	6.5

→ **Full course details**
Find up-to-date information and entry requirements online nottingham.ac.uk/ugstudy

Chemistry

You'll be taught by experts in their subject. They will feed your curiosity for chemistry to develop your approach to independent learning. You'll learn how to make molecules and analyse them in our modern laboratories. Optional modules explore the links between chemistry, physics, biology and industry. Other modules in green chemistry show how we are addressing environmental challenges.

Students on our year in industry degrees have worked in companies such as BP, GSK and Lubrizol. If you choose to study abroad, you could be exploring Australia, Hong Kong or the USA.

Why choose Nottingham?

- Our degrees are accredited by the Royal Society of Chemistry or the Institute of Physics
- Top 10 for chemistry in the UK in *The Complete University Guide 2020*
- Flexibility to transfer between most chemistry degrees during the first year

Careers

Our graduates can find roles in the pharmaceutical, chemical, food and drink, and energy sectors. The skills you'll develop are also valuable for careers in finance, education and the media. Previous graduates have gone on to work for companies such as Boots, Croda, Network Rail and PwC. Many students continue their studies in science working towards a PhD degree.

97.9% of undergraduates in the School of Chemistry secured work or further study within six months of graduation.*

* Known destinations of full-time home undergraduates who were available for employment, 2016/17.

Chemistry BSc/MSci	UCAS	Duration	A level	IB	IELTS
✓ Accredited	BSc	F100	3 years	AAB-ABB	34-32 6.0
✓ Study abroad ✓ Accredited	MSci	F101	4 years	AAA-AAB	36-34 6.0

Chemistry with a Year in Industry MSci	UCAS	Duration	A level	IB	IELTS
✓ Placement ✓ Accredited	F105	4 years	AAA-AAB	36-34	6.0

Chemistry with an International Study Year MSci	UCAS	Duration	A level	IB	IELTS
✓ Study abroad ✓ Accredited	F103	4 years	AAA-AAB	36-34	6.0

Chemistry and Molecular Physics BSc/MSci	UCAS	Duration	A level	IB	IELTS
✓ Accredited	BSc	FF31	3 years	AAB	34 6.5
✓ Study abroad ✓ Accredited	MSci	FFH1	4 years	AAB	34 6.5

Medicinal and Biological Chemistry BSc/MSci	UCAS	Duration	A level	IB	IELTS
✓ Accredited	BSc	FC17	3 years	AAB-ABB	34-32 6.0
✓ Study abroad ✓ Accredited	MSci	FC1R	4 years	AAA-AAB	36-34 6.0

Medicinal and Biological Chemistry with an Assessed Year in Industry MSci	UCAS	Duration	A level	IB	IELTS
✓ Placement ✓ Accredited	CF71	4 years	AAA-AAB	36-34	6.0

→ **Full course details**
Find up-to-date information and entry requirements online nottingham.ac.uk/ugstudy



Computer science

Computer science is more than just programming. It is about problem-solving and creativity. Our range of optional modules allow you to explore the areas of computer science that excite you. These include user experience design, virtual reality, artificial intelligence and machine learning.

You'll take part in a group project in year two which prepares you for designing and creating the systems of the future. Many projects are in collaboration with industry. Previous students have worked with Capital One, Experian, IBM and UniDays. You may recognise some of our tutors as presenters of the popular Computerphile YouTube series.



Why choose Nottingham?

- Accredited by the British Computer Society
- Ranked 7th in the UK for computer science in *The Guardian University Guide 2020*
- Flexibility to transfer between computer science degrees

Careers

Our graduates have found jobs in software development, web and app development, consultancy, and data analysis. Companies our graduates have worked for include BT, Sky and Santander. If you're interested in research, you can continue studying for a masters or PhD.

92.3% of undergraduates in the School of Computer Science secured work or further study within six months of graduation.*

* Known destinations of full-time home undergraduates who were available for employment, 2016/17.

Computer Science BSc/MSci

✓ Study abroad ✓ Accredited

	UCAS	Duration	A level	IB	IELTS
BSc	G400	3 years	AAA	34-32	6.5
MSci	G404	4 years	AAA	34-32	6.5

Computer Science with Year in Industry BSc

✓ Study abroad ✓ Placement
✓ Accredited

	UCAS	Duration	A level	IB	IELTS
	G407	4 years	AAA	34-32	6.5

Computer Science including International Year MSci

✓ Study abroad ✓ Placement
✓ Accredited

	UCAS	Duration	A level	IB	IELTS
	G406	4 years	AAA	34-32	6.5

→ **Full course details**
Find up-to-date information and entry requirements online nottingham.ac.uk/ugstudy

Computer Science with Artificial Intelligence BSc/MSci

UCAS	Duration	A level	IB	IELTS
✓ Study abroad ✓ Accredited	BSc G4G7	3 years	AAA	34-32 6.5
	MSci G4G1	4 years	AAA	34-32 6.5

Computer Science and Artificial Intelligence with Year in Industry BSc

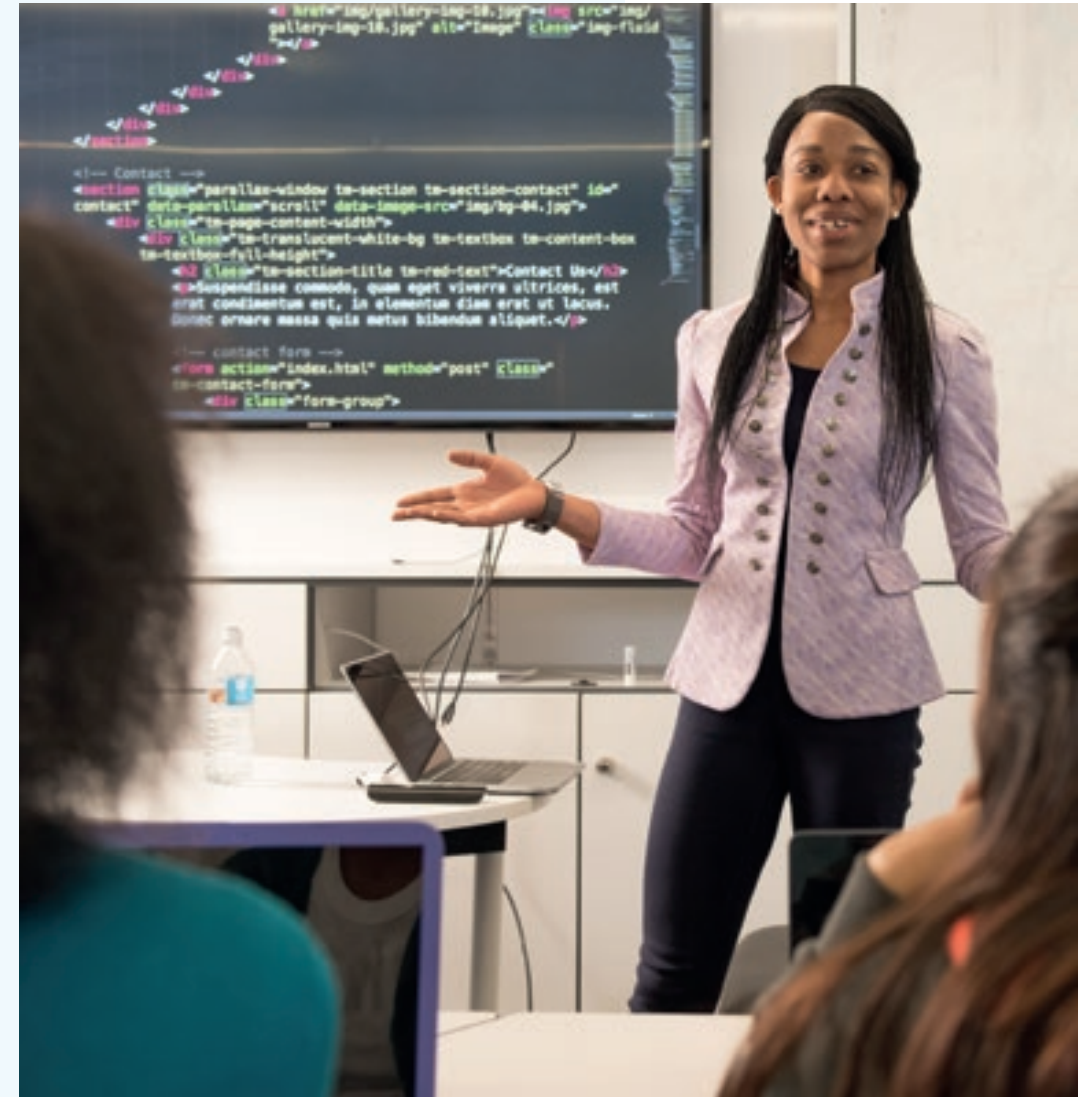
UCAS	Duration	A level	IB	IELTS
✓ Study abroad ✓ Placement ✓ Accredited	G4GB	4 years	AAA	34-32 6.5

Computer Science with Artificial Intelligence including International Year MSci

UCAS	Duration	A level	IB	IELTS
✓ Study abroad ✓ Placement ✓ Accredited	G4GA	4 years	AAA	34-32 6.5

Computer Science with Cyberphysical Systems BSc/MSci

UCAS	Duration	A level	IB	IELTS
BSc G408	3 years	AAA	34-32	6.5
MSci G409	4 years	AAA	34-32	6.5



“I've had the opportunity to develop applications and systems that not only have real world applications, but that rival existing technologies in the field.”

Richard Davis
BSc Computer Science with Artificial Intelligence

→ **Full course details**
Find up-to-date information and entry requirements online nottingham.ac.uk/ugstudy

Environmental sciences

To deliver a sustainable future, we need environmental scientists. Our courses are experience-based, using fieldwork and practicals alongside theory. We apply elements of geography, biology, maths and geology. The flexibility within our courses allows you to explore different areas. You can then specialise in the ones you enjoy most.

We uncover the science behind climate change, teaching you how to identify and solve problems caused by damage to ecosystems. Fieldwork options include Malaysia and Sweden, so you can experience real-life global challenges. You will collect and analyse data, and learn how to use ecological methods and experimental design.

Why choose Nottingham?

- Our accredited courses meet high standards of practical, field and theoretical activities
- Study abroad from a semester to a year, in Europe or internationally including our Malaysia Campus
- Get real-life experience with an industry placement year. You could work at the British Geological Survey or Dartmoor Zoo



Environmental Biology BSc/MSci		UCAS	Duration	A level	IB	IELTS
✓ Study abroad ✓ Accredited	BSc	C150	3 years	ABB-BBB	32-30	6.0
	MSci	C152	4 years	ABB-BBB	32-30	6.0
Environmental Science BSc/MSci		UCAS	Duration	A level	IB	IELTS
✓ Study abroad ✓ Accredited	BSc	F900	3 years	ABB-BBB	32-30	6.0
	MSci	F750	4 years	ABB-BBB	32-30	6.0
International Environmental Science BSc/MSci		UCAS	Duration	A level	IB	IELTS
✓ Study abroad ✓ Accredited	BSc	F753	3 years	AAB-BBB	34-32	6.0
	MSci	F752	4 years	AAB-BBB	34-32	6.0

Careers

You could work for conservation organisations, environmental consultancies, alternative energy companies, local authorities and government agencies.

Roles include environmental education officers, engineering consultants, marine biologists, nature conservation officers, hydrology, recycling and sustainability officers.

These degrees can also lead into roles in teaching, scientific journalism or further research degrees.

→ **Full course details**
Find up-to-date information and entry requirements online nottingham.ac.uk/ugstudy

Food science and nutrition

Our food science courses teach you how to investigate the sensory, physical and chemical properties of foods. You'll use this knowledge to develop and manufacture nutritious and sustainable food. You can study consumer behaviour to understand how psychology affects food choices. Students choose to study with us because of our facilities and industry expertise.

Nutrition explores how the body processes nutrients and the impact of this on health. Many diseases are influenced by diet such as cancer, heart disease, diabetes and obesity. Our nutrition courses combine food science, biochemistry and physiology, with options in bioethics and food marketing.



Why choose Nottingham?

- You can become an associate of accredited bodies when you graduate
- Learn in our specialist facilities including a food processing pilot plant, dietetics suite and food labs
- Problem-based learning, industry interaction, and placements enhance your future employability

Careers

Food scientist graduate roles include development technologists, quality assurance, sensory scientists and commercial roles such as buyers.

Nutritionists can work within the food industry or in public health nutrition, the NHS, education and journalism.

95% of undergraduates in the School of Biosciences secured work or further study within six months of graduation.*

* Known destinations of full-time home undergraduates who were available for employment, 2016/17.

Consumer Behaviour: Food and Nutrition BSc/MSci

	UCAS	Duration	A level	IB	IELTS
✓ Study abroad ✓ Placement	BSc B4DF	3 years	ABB-BBB	32-30	6.0
	MSci B4DN	4 years	ABB-BBB	32-30	6.0

Food Science BSc/MSci

	UCAS	Duration	A level	IB	IELTS
✓ Study abroad ✓ Placement ✓ Accredited	BSc D610	3 years	AAB-ABB	34-32	6.0
	MSci D611	4 years	AAB-ABB	34-32	6.0

Food Science and Nutrition BSc/MSci

	UCAS	Duration	A level	IB	IELTS
✓ Study abroad ✓ Placement ✓ Accredited	BSc D6B4	3 years	AAB-ABB	34-32	6.0
	MSci D64B	4 years	AAB-ABB	34-32	6.0

Nutrition BSc/MSci

	UCAS	Duration	A level	IB	IELTS
✓ Study abroad ✓ Placement ✓ Accredited	BSc B400	3 years	ABB-BBB	32-30	6.0
	MSci B403	4 years	ABB-BBB	32-30	6.0



“Coming to Nottingham has been the most fulfilling, eye-opening experience of my life. I've been involved in arranging events with industry experts giving talks through the Nutrition and Dietetics Society on campus.”

Jamie Boyce
BSc Nutrition

→ **Full course details**
Find up-to-date information and entry requirements online nottingham.ac.uk/ugstudy

Dietetics

Dietitians use their knowledge of science and food to help advise people how to live a healthier life. Our integrated masters course is accredited by the British Dietetic Association and approved by the Health and Care Professions Council. This means you can become a registered dietitian when you graduate.

You'll gain clinical experience through a number of practice placements. These can be in a variety of different settings including hospitals. Our teaching will develop your scientific understanding of areas including nutrition, biochemistry and physiology. Practical sessions in our dietetics suite help to develop your communication skills. Our close links with local hospitals mean that your research project can relate directly to human health.

Careers

Most dietitians work within the NHS in hospitals, non-NHS or community settings. You can specialise in paediatrics, obesity, diabetes, oncology, gastroenterology, mental health or public health.

Nutrition and Dietetics MNutr		UCAS	Duration	A level	IB	IELTS
✓ Placement	✓ Interview	B401	4 years	AAB-ABB	34-32	7.0
✓ Accredited						

Why choose Nottingham?

- Accredited by the HCPC and BDA – register as a dietitian when you graduate
- Specialist facilities include a dietetics suite, sensory and food science laboratories
- Benefit from connections with hospital and community dietetic departments, giving you regular contact with specialist practising dietitians



“The school’s teaching staff are great; they’re so passionate about their subjects and always approachable.”

Hannah King
MNutr Nutrition and Dietetics

→ **Full course details**
Find up-to-date information and entry requirements online nottingham.ac.uk/ugstudy

Mathematical sciences

Help combat global challenges such as environmental change, advancements in medical knowledge or financial market instability, by developing your mathematical and analytical skills. At Nottingham, the scope of research expertise of our teaching staff means you will study specialised modules with real-world relevance.

You will be supported in your progression to university-level maths through student-run peer mentoring. They offer academic and friendly help with important first-year topics ranging from problem solving and proof to curve sketching. We also have a dedicated Teaching Officer who provides study support through regular drop-in sessions.

Why choose Nottingham?

- Tailor your degree to your interests through a broad range of optional modules
- Expand your experience with time spent studying abroad or on an industry placement
- Opportunities for a paid summer research project



Mathematics BSc/MMath		UCAS	Duration	A level	IB	IELTS
✓ Study abroad	✓ Placement	BSc G100	3 years	A*AA-A*AB	36	6.5
		MMath G103	4 years	A*AA-A*AB	36	6.5

Mathematics (International Study) BSc		UCAS	Duration	A level	IB	IELTS
✓ Study abroad		G104	4 years	A*AA-A*AB	36	6.5

Mathematics and Economics BSc		UCAS	Duration	A level	IB	IELTS
✓ Study abroad	✓ Placement	GL11	3 years	A*AA-AAA	36	6.5

Financial Mathematics BSc		UCAS	Duration	A level	IB	IELTS
✓ Study abroad	✓ Placement	G120	3 years	A*AA-A*AB	36	6.5

Statistics BSc		UCAS	Duration	A level	IB	IELTS
✓ Study abroad	✓ Placement	G300	3 years	A*AA-A*AB	36	6.5

Mathematics with a Year in Industry BSc/MMath		UCAS	Duration	A level	IB	IELTS
✓ Placement		BSc G105	4 years	A*AA-A*AB	36	6.5
		MMath G106	5 years	A*AA-A*AB	36	6.5

Careers

Maths graduates are in demand thanks to the transferable skills gained. You could work in business, finance, IT, engineering or medicine and healthcare. Many graduates become teachers or continue to masters or PhD level. 94.4% of undergraduates secured work or further study within six months of graduation.*

* Known destinations of full-time home undergraduates who were available for employment, 2016/17.

Full course details
Find up-to-date information and entry requirements online nottingham.ac.uk/ugstudy

Natural sciences

How can we solve challenges such as climate change, global health and plastic pollution? Natural sciences allows you to study more than one science to degree-level. This helps you understand how the different sciences work together. Interdisciplinary scientists are vital in finding solutions to ‘big-world’ problems.

We offer multiple combinations of nine subjects – archaeology, biology, cancer sciences, chemistry, earth science, ecosystem and environment, maths, physics, and psychology.

Gain practical experience ready for graduation with a placement year. Previous students have worked at Accenture, KPMG and EMEC Ecology.



Why choose Nottingham?

- Flexibility to study multiple sciences
- Gain experience in interdisciplinary research through a group project
- Study abroad in countries such as Australia, Canada or Singapore

Careers

Our graduates use their knowledge and broad skillset to work in areas including the chemical industry, healthcare, software programming, research and technology. Previous students have gone to work for companies including Cancer Research, National Nuclear Laboratory, PwC and Rolls-Royce. Another option is to continue study to masters or PhD level.

Natural Sciences BSc/MSci

✓ Placement

	UCAS	Duration	A level	IB	IELTS
BSc	FGC0	3 years	A*AA-AAA	38	6.5
MSci	GFC0	4 years	A*AA-AAA	38	6.5

Natural Sciences with International Study BSc/MSci

✓ Study abroad

	UCAS	Duration	A level	IB	IELTS
BSc	FGY0	4 years	A*AA-AAA	38	6.5
MSci	GFY0	5 years	A*AA-AAA	38	6.5

Full course details

Find up-to-date information and entry requirements online nottingham.ac.uk/ugstudy

Pharmacy and pharmacology

From designing life-saving medicines to treating patients, these courses are for people who want to improve lives.

Study pharmacy if you want to learn about medicines and their clinical use.

Pharmaceutical sciences focus on the design of medicines and drugs whereas pharmacology looks at how drugs produce their effects on the body.

All our courses have options to study abroad. You could go to our Malaysia Campus or partner universities in countries such as Australia, China, Singapore or New Zealand.

Why choose Nottingham?

- Ranked 8th in the world for pharmacy and pharmacology in the *QS World University Rankings by Subject 2019*
- MPharm degrees are accredited by the General Pharmaceutical Council
- Expert teaching based on real-world problems that face the healthcare and pharmaceutical industries



Course	UCAS	Duration	A level	IB	IELTS
Pharmaceutical Sciences BSc					
✓ Study abroad	B313	3 years	AAB	34	6.5
Pharmaceutical Sciences (with a Year in Industry) MSci					
✓ Study abroad ✓ Placement	B23B	4 years	AAB	34	6.5
Pharmacy MPharm					
✓ Study abroad ✓ Interview ✓ Accredited	B230	4 years	AAB	34	7.0
Pharmacy (with Integrated Pre-registration Scheme) MPharm					
✓ Study abroad ✓ Placement ✓ Interview ✓ Accredited	B236	5 years	AAB	34	7.0
Pharmacology BSc					
✓ Study abroad	B211	3 years	AAB	34	6.5

Careers

Our MPharm graduates go on to develop careers as pharmacists working in the community, hospitals or GP practices. Other opportunities are available working for pharmaceutical companies. Pharmaceutical scientists and pharmacologists often work in the pharmaceutical or biotechnology industries. You could have a role in drug discovery, medicines manufacturing or clinical trials.

100% of undergraduates from the School of Pharmacy secured work or further study within six months of graduation.*

* Known destinations of full-time home undergraduates who were available for employment, 2016/17.

→ **Full course details**
Find up-to-date information and entry requirements online nottingham.ac.uk/ugstudy

■ Physics and astronomy

We're home to Nobel Prize-winning research and the popular Sixty Symbols YouTube channel. Join us if you are curious about how our world and universe work.

Our MSci courses are unique as we focus on group assignments and project work rather than lectures for the fourth year. This builds your independence which is attractive to employers and prepares you for further study. We offer a combination of courses so you can keep your study broad or focus on a specialism. There is flexibility to transfer between most physics degrees after the first year.

Why choose Nottingham?

- Ranked 8th for physics in the UK in *The Guardian University Guide 2020* and *The Complete University Guide 2020*
- Choose from a range of modules reflecting our expertise from nanoscience to cosmology
- Apply for a paid summer research project where you can work directly with our researchers



Physics BSc/MSci		UCAS	Duration	A level	IB	IELTS
✓ Interview	✓ Accredited	BSc	F300	3 years	A*AA-AAA	38 6.5
✓ Interview	✓ Study abroad	MSci	F303	4 years	A*AA-AAA	38 6.5
	✓ Accredited					

Physics with a Year in Industry BSc/MSci		UCAS	Duration	A level	IB	IELTS
✓ Interview	✓ Placement	BSc	F305	4 years	A*AA-AAA	38 6.5
✓ Interview	✓ Study abroad	MSci	F306	5 years	A*AA-AAA	38 6.5
	✓ Placement					

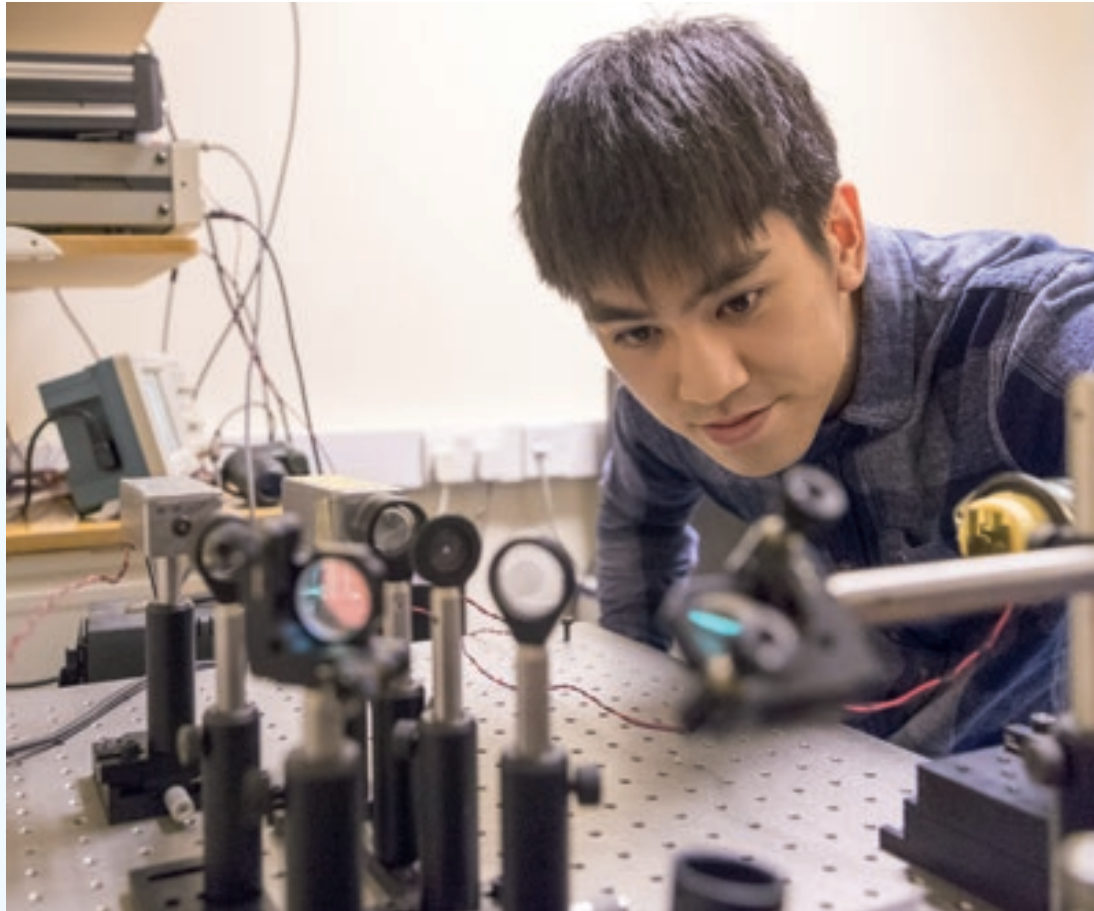
Physics with Astronomy BSc/MSci		UCAS	Duration	A level	IB	IELTS
✓ Interview	✓ Accredited	BSc	F3F5	3 years	A*AA-AAA	38 6.5
✓ Interview	✓ Study abroad	MSci	F3FM	4 years	A*AA-AAA	38 6.5
	✓ Accredited					

Careers

Lots of industries require physicists. You could work in technology and computing, business, engineering, teaching or healthcare. Alternatively, you could join about 40% of our graduates who choose further study. Many complete PhDs or masters in physics, computer science and mathematics. 96.5% of undergraduates from the School of Physics secured work or further study within six months of graduation.*

* Known destinations of full-time home undergraduates who were available for employment, 2016/17.

Full course details
Find up-to-date information and entry requirements online nottingham.ac.uk/ugstudy



Physics with European Language BSc/MSci

	UCAS	Duration	A level	IB	IELTS
<ul style="list-style-type: none"> ✓ Interview ✓ Placement 	BSc F3R9	4 years	A*AA-AAA	38	6.5
<ul style="list-style-type: none"> ✓ Study abroad ✓ Accredited 	MSci F3RX	4 years	A*AA-AAA	38	6.5

Physics with Medical Physics BSc/MSci

	UCAS	Duration	A level	IB	IELTS
<ul style="list-style-type: none"> ✓ Interview ✓ Accredited 	BSc F350	3 years	A*AA-AAA	38	6.5
<ul style="list-style-type: none"> ✓ Interview ✓ Accredited 	MSci F371	4 years	A*AA-AAA	38	6.5

Physics with Nanoscience BSc/MSci

	UCAS	Duration	A level	IB	IELTS
<ul style="list-style-type: none"> ✓ Interview ✓ Accredited 	BSc F390	3 years	A*AA-AAA	38	6.5
<ul style="list-style-type: none"> ✓ Interview ✓ Accredited 	MSci F391	4 years	A*AA-AAA	38	6.5

Physics with Theoretical Astrophysics BSc/MSci

	UCAS	Duration	A level	IB	IELTS
<ul style="list-style-type: none"> ✓ Interview ✓ Accredited 	BSc F346	3 years	A*AA-AAA	38	6.5
<ul style="list-style-type: none"> ✓ Interview ✓ Accredited 	MSci F345	4 years	A*AA-AAA	38	6.5

Physics with Theoretical Physics BSc/MSci

	UCAS	Duration	A level	IB	IELTS
<ul style="list-style-type: none"> ✓ Interview ✓ Accredited 	BSc F344	3 years	A*AA-AAA	38	6.5
<ul style="list-style-type: none"> ✓ Interview ✓ Accredited 	MSci F340	4 years	A*AA-AAA	38	6.5

Physics and Philosophy BSc

	UCAS	Duration	A level	IB	IELTS
<ul style="list-style-type: none"> ✓ Interview ✓ Study abroad 	FV35	3 years	A*AA-AAA	38	6.5

Mathematical Physics BSc/MSci

	UCAS	Duration	A level	IB	IELTS
<ul style="list-style-type: none"> ✓ Interview ✓ Accredited 	BSc F326	3 years	A*AA-AAA	38	6.5
<ul style="list-style-type: none"> ✓ Interview ✓ Accredited 	MSci F325	4 years	A*AA-AAA	38	6.5

→ **Full course details**
 Find up-to-date information and entry requirements online
nottingham.ac.uk/ugstudy

■ Psychology and neuroscience

Psychology and neuroscience are courses for people who are curious about the brain and human mind. Nottingham emphasises practical teaching. Our facilities include a human neuroscience lab in the Medical School, eye trackers, TMS and EEG.

You'll learn the theory and also how to design and run your own experiments. Optional modules and research projects allow you to choose the areas of psychology or neuroscience that interest you. MSci courses provide extra opportunities to do research. They are ideal if you are interested in continuing to a PhD.

Why choose Nottingham?

- Our psychology degrees are accredited by the British Psychological Society
- Study abroad in countries such as Australia, Canada or Singapore
- Benefit from small-group tutorials and peer mentoring support



Neuroscience BSc/MSci		UCAS	Duration	A level	IB	IELTS
	BSc	B140	3 years	AAB	34	6.5
✓ Study abroad	MSci	B141	4 years	AAB	34	6.5
Psychology BSc/MSci		UCAS	Duration	A level	IB	IELTS
✓ Study abroad	BSc	C800	3 years	AAB	36-34	6.5
✓ Accredited	MSci	C803	4 years	AAA	36-34	6.5
Psychology and Cognitive Neuroscience BSc		UCAS	Duration	A level	IB	IELTS
✓ Study abroad		C850	3 years	AAB	36-34	6.5
✓ Accredited						

You might also like

Liberal Arts BA (p.70)

Careers

As a psychology graduate you could do further study to become a clinical, forensic or occupational psychologist. Alternatively, use your skills in industries such as business, healthcare, education or marketing. Neuroscientists can work in pharmaceuticals, biotechnology, and clinical sciences.

96.5% of undergraduates from the School of Life Sciences and 96.2% of undergraduates from the School of Psychology secured work or further study within six months of graduation.*

* Known destinations of full-time home undergraduates who were available for employment, 2016/17.

Full course details

Find up-to-date information and entry requirements online nottingham.ac.uk/ugstudy

Business and management

Our degrees will teach you the key principles of innovation, entrepreneurship and sustainable management. You'll study real organisations and the ever-changing world of business. You can also gain real-world experience through our work placement scheme or by studying abroad. We have campuses in China and Malaysia, and partner institutions in countries including Australia, the USA and Sweden.

You'll be able to follow your individual interests and career aspirations by selecting from optional modules alongside your core subjects. Whichever degree you choose, you'll be well equipped for future success.

Why choose Nottingham?

- Our undergraduate courses are recognised by industry bodies and offer exemption from some professional exams
- Development and career programmes that bring you closer to top employers including Deloitte, PwC and Unilever
- Part of a distinct group of EQUIS accredited business schools



Careers

Our employer programme enables you to network with top employers throughout your degree, with many of these companies choosing to sponsor prizes for high-performing students.

Many of our business and management graduates go into management consultancy, marketing and human resource management. Recent graduate employers include Apple, Deloitte, and Saatchi & Saatchi.*

Industrial Economics BSc	UCAS	Duration	A level	IB	IELTS
✓ Study abroad ✓ Placement ✓ Accredited	L1N2	3 years	AAB	34	7.0

Industrial Economics with Insurance BSc	UCAS	Duration	A level	IB	IELTS
✓ Study abroad ✓ Placement ✓ Accredited	L1N3	3 years	AAB	34	7.0

International Management BSc	UCAS	Duration	A level	IB	IELTS
✓ Study abroad ✓ Placement ✓ Accredited	N20A	3 years	AAB	34	7.0

Management BSc	UCAS	Duration	A level	IB	IELTS
✓ Study abroad ✓ Placement ✓ Accredited	N200	3 years	AAB	34	7.0

You might also like

- Accountancy BSc (p.148)
- Finance, Accounting and Management BSc (p.148)
- Geography with Business BA (p.150)

* All careers data is sourced from the Destination of Leavers from Higher Education, 2016/17 (HESA 2018).

→ **Full course details**
 Find up-to-date information and entry requirements online nottingham.ac.uk/ugstudy

■ Criminology

How do we define crime? How do changes in society impact crime and our responses to it? How can punishment be justified? As a criminology student at Nottingham, you'll consider these questions.

You'll explore the social, political, economic and cultural contexts of crime, victimisation and crime control. Criminology draws on insights from other subject areas including sociology, social policy, law and psychology.

This will develop your critical thinking and research skills, and will give you a broad understanding of theoretical perspectives on crime and justice.

Why choose Nottingham?

- Ranked 5th for criminology in the UK in *The Times* and *The Sunday Times Good University Guide 2020*
- Study abroad in locations such as Australia, Canada and the USA
- Tailor your degree through optional modules taught by experts in their fields

Criminology BA	UCAS	Duration	A level	IB	IELTS
✓ Study abroad ✓ Placement	L316	3 years	ABB	32	7.0
Criminology and Social Policy BA	UCAS	Duration	A level	IB	IELTS
✓ Study abroad ✓ Placement	8L67	3 years	ABB	32	7.0
Criminology and Sociology BA	UCAS	Duration	A level	IB	IELTS
✓ Study abroad ✓ Placement	1L22	3 years	ABB	32	7.0

“

Whether it's the friendly and knowledgeable staff, the contact hours or the independent learning, this course has enlightened me. It has given me new platforms to discover and explore the intricacies of the social world.”

Kelly Waldorf
BA Criminology and Sociology



Careers

Our criminology degrees can open doors to a career in various sectors including criminal justice, law enforcement, law practice and community safety. Recent graduates are now working with the Youth Justice Board, Ministry of Justice and other governmental departments.



Full course details
Find up-to-date information and entry requirements online
nottingham.ac.uk/ugstudy

Economics

Economics isn't just about money. It's about choices and the way we make them. Our degrees encourage you to question things like the gender pay gap, how government policies affect us, and why some countries grow faster than others.

As well as learning the core analytical and quantitative techniques required by economics graduates, you can also tailor your studies to your individual career aspirations with our wide range of optional modules.

You can enhance your CV by studying abroad at our campuses in China or Malaysia, or with a partner institution in locations like Australia, Canada or Japan.

Careers

Our economics graduates gain a range of specialist and transferable skills, including the ability to grasp complex economic concepts, both mathematical and philosophical.

They go into a wide variety of careers including investment banking, accountancy, mergers and acquisitions, and stock and bond trading. Recent graduate employers include Bloomberg, Goldman Sachs and the Home Office.



Why choose Nottingham?

- Ranked 9th in the UK for economics in *The Complete University Guide 2020*
- Core module in your first year develops essential economics study skills
- Summer internship or placement year options which can often lead to a graduate job offer

→ **Full course details**
Find up-to-date information and entry requirements online nottingham.ac.uk/ugstudy

Course	UCAS	Duration	A level	IB	IELTS
Economics BSc ✓ Study abroad ✓ Placement	L100	3 years	A*AA	38	7.0
Economics and Econometrics BSc ✓ Study abroad ✓ Placement	L140	3 years	A*AA	38	7.0
Economics and International Economics BSc ✓ Study abroad ✓ Placement	L160	3 years	A*AA	38	7.0
Economics and Philosophy BA ✓ Study abroad ✓ Placement	LV15	3 years	A*AA	38	7.0
Economics with French BA ✓ Study abroad ✓ Placement	L1R1	4 years	A*AA	38	7.0
Economics with German BA ✓ Study abroad ✓ Placement	L1R2	4 years	A*AA	38	7.0
Economics with Hispanic Studies BA ✓ Study abroad ✓ Placement	L1R4	4 years	A*AA	38	7.0
Philosophy, Politics and Economics BA ✓ Study abroad ✓ Placement	VLL5	3 years	A*AA	38	7.0

You might also like

- Industrial Economics BSc (p.140)
- Industrial Economics with Insurance BSc (p.140)
- Politics and Economics BA (p.154)

Education

Studying education isn't confined to the classroom. On our degree you will explore how people learn, how we can maintain equality and inclusiveness in education, and how advancements in technology are changing the way we teach. By drawing on subject areas including politics, history, sociology, philosophy and psychology, you'll understand the wide range of influences on global education policy.

Our placement module will give you hands-on experience in diverse settings such as NGOs, museums and schools. You may also have the opportunity to spend a semester abroad at our Malaysia campus to enhance your CV.

Why choose Nottingham?

- Ranked 8th in the UK for education in the *QS World University Rankings by Subject 2019*
- Academic experts who have won awards for their teaching
- Strong links with international campuses, professional networks and partnership schools

Careers

100% of our undergraduates were in work or further study within six months of graduation.* The critical focus of our BA Education provides a strong basis for a career in a range of sectors such as charities, NGOs, community and educational theatre, and educational journalism.

Education BA	UCAS	Duration	A level	IB	IELTS
✓ Study abroad ✓ Placement	X3BA	3 years	ABB	32	6.5



“

The small class size makes it comfortable to share ideas and participate in group discussions as well as receiving quality attention from the lecturers who are able to really get to know you.”

Alice Humphrey
BA Education

* Known destinations of full-time home undergraduates who were available for employment, 2016/17.



Full course details
Find up-to-date information and entry requirements online
nottingham.ac.uk/ugstudy

Finance

Accounting and finance is a key component of global business operations. Our degrees give you a solid grounding in fundamental disciplines including business finance, financial and management accounting, and business law.

You can fast-track your finance career with our BSc Accountancy. It's been developed in partnership with PwC where you'll spend four months on paid work placement in your second and third years, assisting on real client work.

On our BSc Finance, Accounting and Management course you could either go on a work placement year or study abroad. Locations include our campuses in China or Malaysia, or a partner institution in Australia or Europe.



Why choose Nottingham?

- Partner in learning with the Institute of Chartered Accountants in England and Wales (ICAEW)
- Career-enhancing opportunities through our partnership with CIMA
- Tailor your studies by selecting optional modules alongside core subjects

Careers

Our finance graduates are highly sought after, gaining employment in accountancy, banking and other financial services. If you graduate with a 2:1 or higher on our BSc Accountancy, PwC may offer you a full-time position as a Senior Associate, where you'll earn a very competitive salary.

Recent graduates have also gone on to work at prestigious companies including Barclays, EY and Morgan Stanley.

→ **Full course details**
Find up-to-date information and entry requirements online nottingham.ac.uk/ugstudy

Accountancy (Flying Start) BSc

	UCAS	Duration	A level	IB	IELTS
✓ Placement ✓ Interview ✓ Accredited	N410	4 years	AAB	34	7.0

Finance, Accounting and Management BSc

	UCAS	Duration	A level	IB	IELTS
✓ Study abroad ✓ Placement ✓ Accredited	NN34	3 years	AAB	34	7.0

You might also like

- Financial Mathematics (p.129)
- Industrial Economics BSc (p.140)
- Industrial Economics with Insurance BSc (p.140)
- International Management BSc (p.140)
- Management BSc (p.140)

Geography

Bridging the sciences and the humanities, geography is the ideal subject if you're keen to develop a broader understanding of the world around us. You'll learn through lectures, practical classes, group activities and field trips in the UK and overseas.

You can tailor your studies through a wide range of optional modules from lots of different subject areas as diverse as languages, natural sciences or business.

You could also spend a semester studying abroad at one of our partner institutions in locations such as Australia, Canada, Europe and the USA.

Why choose Nottingham?

- Field trips to destinations such as Berlin, Mexico and the USA
- Essential real-world skills through work placements
- Support and advice from your personal tutor and peer mentor

Careers

As a geography graduate, you will have a wide range of skills that employers are looking for. You can go on to have a career in numerous sectors such as conservation, heritage protection, management consultancy, marketing and finance. Recent graduates have gone on to work at the British Geological Survey, Capita and Historic England.



Physical Geography and Geology BSc	UCAS	Duration	A level	IB	IELTS
✓ Study abroad ✓ Placement F640		3 years	ABB	32	7.0
Geography BA	UCAS	Duration	A level	IB	IELTS
✓ Study abroad ✓ Placement ✓ Accredited L700		3 years	AAB	34	7.0
Geography BSc	UCAS	Duration	A level	IB	IELTS
✓ Study abroad ✓ Placement ✓ Accredited F800		3 years	AAB	34	7.0
Geography with Business BA	UCAS	Duration	A level	IB	IELTS
✓ Study abroad ✓ Placement L7N1		3 years	AAB	34	7.0

You might also like

- Environmental Science BSc (p.122)
- Environmental Science MSci (p.122)
- International Environmental Science BSc (p.122)
- International Environmental Science MSci (p.122)
- Natural Sciences BSc (p.131)

Full course details
 Find up-to-date information and entry requirements online
nottingham.ac.uk/ugstudy

The law transcends just about every aspect of our lives and defines relationships within business and commerce. Both LLB and BA Law are qualifying law degrees that thoroughly cover the foundations of English law. You could also have the option to spend a year studying different legal systems at a partner law school in locations including Australia, Canada, Europe or the USA.

If you don't want to practise law, our BA degrees enable you to choose optional modules from different subjects outside of the school. This will expand your knowledge and career opportunities in a wide variety of sectors.

Why choose Nottingham?

- Award-winning student societies offer mooting competitions, international trips and volunteering opportunities
- Workshops and one-to-one sessions develop your legal skills and confidence
- Annual law fair offers the chance to network with over 70 legal organisations

Careers

The skills you'll acquire on a law degree from Nottingham will prepare you for a successful career in sectors as diverse as multinational business, politics, the media and, of course, law practice.

A high proportion of our graduates go on to qualify as solicitors or barristers, while others now work at organisations including Citibank, Deloitte, PwC and Unilever.



Law BA	UCAS	Duration	A level	IB	IELTS
✓ Study abroad ✓ Placement ✓ Accredited	M100 (BA)	3 years	AAA	36	7.0
Law LLB	UCAS	Duration	A level	IB	IELTS
✓ Study abroad ✓ Placement ✓ Accredited	M100 (LLB)	3 years	AAA	36	7.0
Law with French and French Law BA	UCAS	Duration	A level	IB	IELTS
✓ Study abroad ✓ Placement ✓ Accredited	M1R1	4 years	AAA	36	7.0
Law with German and German Law BA	UCAS	Duration	A level	IB	IELTS
✓ Study abroad ✓ Placement ✓ Accredited	M1R2	4 years	AAA	36	7.0
Law with Spanish and Spanish Law BA	UCAS	Duration	A level	IB	IELTS
✓ Study abroad ✓ Placement ✓ Accredited	M1R4	4 years	AAA	36	7.0

You might also like

- Criminology BA (p.142)
- Criminology and Social Policy BA (p.142)
- Criminology and Sociology BA (p.142)



Full course details
 Find up-to-date information and entry requirements online nottingham.ac.uk/ugstudy

Politics and international relations

What triggers wars between nations, and how can lasting peace be achieved? How can governments balance immigration with human rights and ethical considerations? How is counter-terrorism developing in the face of ever-changing threats? Discover the answers to these questions and more on our politics and international relations degrees.

You could also gain a different perspective on the world's most fundamental political issues by studying abroad in locations such as Australia, Switzerland and the USA. We also offer a work placement module so you can apply your knowledge in a real-world setting and enhance your CV.

Why choose Nottingham?

- Highly active Politics Society organises international trips and guest lectures
- Tailor your studies to your career goals through optional modules
- Tutors who have won awards for their teaching and are regularly featured in the media

Careers

You will graduate with specialist knowledge of international issues and political systems. Our graduates have entered party politics as parliamentary assistants, local government councillors and even MPs. Others work for the civil service and in research and data analysis. Graduates have gone on to work at organisations such as the BBC, House of Commons and Policy Exchange.

Politics and International Relations BA

	UCAS	Duration	A level	IB	IELTS
✓ Study abroad ✓ Placement	L290	3 years	AAA	36	7.0

International Relations and Asian Studies BA

	UCAS	Duration	A level	IB	IELTS
✓ Study abroad ✓ Placement	LT24	3 years	ABB	32	7.0

Politics and Economics BA

	UCAS	Duration	A level	IB	IELTS
✓ Study abroad ✓ Placement	LL21	3 years	AAA	36	7.0

You might also like

- French and Politics BA (p.68)
- German and Politics BA (p.68)
- Hispanic Studies and Politics BA (p.68)
- Philosophy, Politics and Economics BA (p.74)
- Politics and American Studies BA (p.47)



Full course details
Find up-to-date information and entry requirements online
nottingham.ac.uk/ugstudy

Social work

Social workers play a vital role in protecting vulnerable people in society. Our BA Social Work includes all the essential elements required to qualify as a social worker. It combines academic modules that will develop core knowledge, values and skills, with practice-based learning in a variety of settings.

As a social worker you could be working with children, older people, carers and people with disabilities in a role that is challenging but also incredibly rewarding.

Careers

While most of our graduates work as social workers in local authority children’s or adults’ services, some take up positions in the independent sector. Our graduates have gone on to work in organisations including Derby City Council, Framework Housing Association and Nottinghamshire County Council.

Social Work BA	UCAS	Duration	A level	IB	IELTS
✓ Placement ✓ Interview ✓ Accredited	L509	3 years	ABB	32	7.0

Why choose Nottingham?

- Ranked 2nd in the UK for social work in *The Complete University Guide 2020*
- Member of the D2N2 Teaching Partnership which ensures the highest standards of social work education and practice
- Regulated by Social Work England, ensuring you develop the skills required to become a qualified social worker



“There is a holistic coverage of all aspects of social work across the course. Teaching includes a range of modules and skill-days that feature practical and theory-based learning. The course is the perfect place to develop as a socially conscious person as well as a social work professional.”

Lewis Elgie
BA Social Work

→ **Full course details**
Find up-to-date information and entry requirements online nottingham.ac.uk/ugstudy

Sociology and social policy

How are societies created and sustained? How do social constructs impact upon our everyday lives? What social norms bind or separate us? How do individuals or groups bring about social change? On our sociology and social policy degrees, you'll question and explore the realities of the world around us.

You'll also consider how the state responds to major social problems such as poverty, homelessness, domestic violence and unemployment, so you can discover how to make a difference in our increasingly complex world.

Why choose Nottingham?

- 7th in the UK for social policy in *The Complete University Guide 2020*
- Study abroad in locations such as Australia, Canada and the USA
- Expert tutors who have won awards for the quality of their teaching

Careers

Many of our graduates choose careers where they can make a real difference to society. They follow a wide range of pathways including criminal justice, healthcare, welfare and education.

The breadth of skills you'll acquire on your degree will also enable you to pursue a career in numerous sectors including journalism, PR, marketing and IT. Recent graduates now work at organisations including Stonewall, local authorities and the Ministry of Justice.

Sociology BA	UCAS	Duration	A level	IB	IELTS
✓ Study abroad ✓ Placement	L300	3 years	ABB	32	7.0
Sociology and Social Policy BA	UCAS	Duration	A level	IB	IELTS
✓ Study abroad ✓ Placement	LL34	3 years	ABB	32	7.0

You might also like

- Criminology and Social Policy BA (p.142)
- Criminology and Sociology BA (p.142)
- Social Work BA (p.156)

Full course details
Find up-to-date information and entry requirements online nottingham.ac.uk/ugstudy



Courses at our China and Malaysia campuses

A global university

The University of Nottingham Ningbo China (UNNC) has established itself as a prestigious choice for students in China and across the globe.

University of Nottingham Malaysia (UNM) sits on an attractive 125-acre site modelled on Nottingham's University Park Campus, 22 miles south of capital city Kuala Lumpur.

All study programmes are conducted in English and your degree certificate will state the University of Nottingham, rather than a specific campus.

You will have opportunities to study in the UK and at other top universities. If you are based at one of our Nottingham campuses and your course is taught at China or Malaysia, you may be able to spend time studying here as part of your degree (see page 38 about opportunities to study abroad).

Life on our international campuses

Modern and spacious, the 144-acre Ningbo campus has high-quality teaching facilities, student amenities and a sports complex. Purpose-built accommodation is provided for all students, including those who are on a campus exchange from Nottingham.

The Malaysia campus is a self-contained village which overlooks scenic green hills. As well as the wide range of teaching and learning facilities, there are convenience stores and a health centre. Residential accommodation is available on and off campus.

University of Nottingham Ningbo China

Situated in the prosperous Zhejiang Province, Ningbo is home to around 7.6 million people. As one of the oldest cities in China, Ningbo is steeped in history but also offers plenty of modern entertainment.

The Chinese economy is one of the world's largest and China has become one of the most influential countries in the world, making the opportunity to study here invaluable.

To apply to be a student at UNNC, you will need to download an application form from our website and apply directly to the campus. The deadline for applications to UNNC for 2020/21 will be 30 June 2020. Late applications will be considered subject to availability of places, visit nottingham.edu.cn/en/study

University of Nottingham Malaysia

Malaysia has a mixture of cultures based on a vibrant and interesting fusion of Malay, Chinese, Indian and indigenous communities. English is widely spoken.

Transport is available from campus to the nearest bus and rail stations, providing easy access to Kuala Lumpur and the surrounding area.

For admissions requirements for individual academic schools, visit nottingham.edu.my/study/how-to-apply

Professional recognition

Qualifications from all our campuses are recognised equally. However, please be aware that courses accredited by external bodies in the UK may not be accredited in the same way at our international campuses.

English language requirements

All courses at UNNC and UNM are taught in English to the same standard as the University of Nottingham in the UK. In addition to the academic requirements, you will also need to meet the same language requirements as applicants to the University of Nottingham in the UK.

Fees and costs

Our course fees for 2021/22 are subject to change, but in 2020/21 they were:

China

90,000RMB per year*

nottingham.edu.cn

Malaysia

RM33,500-58,00 per year**

nottingham.edu.my/fees

* At the time of going to print, this was equivalent to around £9,999.

** At the time of going to print, this was equivalent to around £6,400-£10,500.

For up-to-date conversion rates, see xe.com/ucc



Applying to Nottingham

Ready to apply?
For an undergraduate degree,
apply online through ucas.com

Application deadlines for 2021 entry:

15 October 2020
medicine and veterinary
medicine courses

15 January 2021
standard deadline for
all other courses

30 June 2021
final closing date for
online applications

EU and international applications

For qualifications guidance and other information for students from your country, see nottingham.ac.uk/go/yourcountry

Clearing and Adjustment

Information about applying through Clearing and Adjustment will be on our website from July.

Part-time courses

Some of the University's courses are available part-time, so check your course online for more information. Part-time applications are made directly to the University, rather than through UCAS.



What are we looking for?

To give your application the best chance with us, here are some of the things we look for:

- strong grades and academic potential
- good reasons for choosing your course
- related work or voluntary experience
- interest in issues relevant to your chosen subject

Your personal statement is the opportunity to tell us why you're a perfect choice to study your course, and tell us about any relevant skills and experience.

We are committed to treating all applications on merit, abilities and potential, regardless of gender, race, colour, nationality, ethnic or national origin, age, disability, religious or political beliefs, family circumstances or sexual orientation.

Contextual offers

We recognise the potential of talented students from all backgrounds.

We make contextual offers to students whose personal circumstances may have restricted achievement at school or college. These offers are usually one grade lower than the entry requirements on our course pages.

To qualify for a contextual offer, you must have Home/UK fee status and meet the specific criteria detailed on our website.

→ **Find out more**
about applying to Nottingham
nottingham.ac.uk/ugstudy/applying

Finance and funding

Tuition fees

UK students

If you begin studying with us as a full-time undergraduate student, you will be charged an annual tuition fee, which in 2020/21 will be £9,250.*

EU students

At the time of publication, the UK government had not yet confirmed the status of EU student fees and funding for 2021/22.

International students

Tuition fees for international students in 2021/22 will be published on our website when they are confirmed during 2020. They typically increase each year.

Part-time students

Part-time students will be charged the full-time fee on a pro-rata basis.

University bursaries

Bursaries

Many of our home students receive a core bursary which was £1,000 for 2020 entrants. Full-time students with assessed household income of up to £35,000 a year are eligible.

Core bursary entitlement (2020/21 entry)

Household income	Annual core bursary
£0 – £35,000	£1,000

Students with specific circumstances are eligible for Nottingham Potential bursaries, worth £1,000 a year on top of the core bursary.

Student discounts

TOTUM card

Students are able to apply for cards like the TOTUM card. This offers great discounts in a range of shops, cafes and restaurants around the UK.

totum.com

* At the time of printing, tuition fee information for 2021/22 entry had not been confirmed. The University reserves the right to increase tuition fees for new and continuing students each year to the maximum permitted by law or government policy, including where this exceeds the rate of inflation.

Government loans

Tuition loans

Full-time and part-time home students are eligible for a tuition fee loan in 2020/21. This loan means most students will not have to pay fees upfront while studying.

For more details visit:
gov.uk/studentfinance

Maintenance loans

Home students in 2020/21 are eligible for a maintenance loan, which is based on your household income. The table below gives an indication of entitlement for a student living away from home, studying at Nottingham.

Household income	Loans for living costs*
£25,000 or less	£9,203
£35,000	£7,884
£42,875	£6,845
£55,000	£5,246
Over £62,249	£4,289

* 2020 figures, more information at nottingham.ac.uk/financialsupport

Other support

Additional support grants

Home students in 2020/21 may be eligible for extra support, such as:

- childcare grant
- parents' learning allowance
- adult dependants' grant
- disabled students' allowance
- child tax credits/Universal Credit

gov.uk/studentfinance

nottingham.ac.uk/academicsupport

gov.uk/student-finance/extra-help

Scholarships

We also offer a range of scholarships and high-achiever prizes for students.

Additional case-by-case support may also be available for students experiencing financial difficulties.



Finance guidance

Get the latest information from nottingham.ac.uk/financialsupport

You can also contact our Funding and Financial Support team through:

+44 (0)115 748 6500

financialsupport@nottingham.ac.uk

A

Accountancy	149
Accounting, finance and management	149
Aerospace engineering	81
Agricultural and crop science	111
Agricultural and livestock science	111
Agricultural business management (integrated)	111
Agricultural science (international)	111
Agriculture	111
American and Canadian literature, history and culture	47
American studies and English	47, 55
American studies and film and television studies	47, 57
American studies and history	47, 60
American studies and Latin American studies	47, 67
American studies and politics	47
Ancient history	51
Ancient history and archaeology	49, 51
Ancient history and history	51, 59
Animal science	111
Archaeology	49
Archaeology (historical)	49
Archaeology and ancient history	49, 51
Archaeology and classical civilisation	49, 51
Archaeology and geography	49
Archaeology and history	49, 60
Archaeology and history of art	49, 63
Architectural environment engineering	83
Architecture	83
Architecture (ARB/RIBA part 2)	83
Architecture and environmental design	83
Artificial intelligence (computer science with)	120
Arts and humanities with foundation year	45
Asian studies (international relations and)	155
Astronomy (physics with)	135

B

Biblical studies and theology	79
Biochemistry	99
Biochemistry and biological chemistry	99
Biochemistry and genetics	99
Biochemistry and molecular medicine	99
Biology	113
Biology (environmental)	123
Biology (tropical)	143
Biological chemistry and biochemistry	99
Biological and medicinal chemistry	117
Biotechnology	113
Business (geography with)	150
Business (modern languages with)	67

C

Cancer sciences	101
Chemical engineering	85
Chemical engineering with environmental engineering	85
Chemistry	117
Chemistry and molecular physics	117
Chinese studies (contemporary) and French German Russian Spanish	66
Chinese studies (contemporary) and history	60, 68
Civil engineering	87
Classical civilisation	51
Classical civilisation and archaeology	49, 51
Classical civilisation and philosophy	51, 76
Classics	51
Classics and English	51, 54
Cognitive neuroscience and psychology	139
Computer and electronic engineering	90-91
Computer science	119
Computer science with artificial intelligence	120
Computer science with cyberphysical systems	120
Consumer behaviour: food and nutrition	125
Creative writing (English with)	53
Criminology	142

C

Criminology and social policy	142
Criminology and sociology	142
Crop and agricultural science	111
Culture, religion and ethics	79
Cyberphysical systems with computer science	120

D

Dietetics and nutrition	127
-------------------------	-----

E

East European cultural studies and history	59, 69
Econometrics and economics	145
Economics	145
Economics (industrial)	141
Economics (industrial) with insurance	141
Economics and econometrics	145
Economics and international economics	145
Economics and mathematics	129
Economics and philosophy	76, 145
Economics and politics	155
Economics, philosophy and politics	75, 145
Economics with French German Hispanic studies	69, 145
Education	147
Electrical and electronic engineering	89-91
Electrical engineering	89-91
Electronic and computer engineering	90-91
Electronic and electrical engineering	89-91
Electronic engineering	89-91
Engineering and physical sciences foundation programme	45
English	53
English and American studies	47, 55
English and classics	51, 54
English and French German Hispanic studies	54, 67
English and history	55, 60

E

English and history of art	55, 63
English and philosophy	55, 76
English language and literature	53
English with creative writing	53
Environmental biology	123
Environmental design and architecture	83
Environmental engineering	85
Environmental engineering (chemical engineering with)	85
Environmental science	123
Ethics, religion and culture	79
Ethics, religion and philosophy	75, 79
European language with physics	136
Exercise science and sport	101

F

Film and television studies	57
Film and television studies and American studies	47, 57
Finance, accounting and management	149
Financial mathematics	129
Food and nutrition (consumer behaviour)	125
Food science	125
Food science and nutrition	125
Foundation courses (all)	45
French and contemporary Chinese studies	66
French and English	54, 67
French and French law (law with)	69, 153
French and history	60, 67
French and international media communications studies	57, 68
French and philosophy	68, 76
French and politics	68
French (economics with)	69, 145
French studies	65

G

Genetics	115
Genetics and biochemistry	99
Geography	150
Geography and archaeology	49
Geography with business	150
Geology and physical geography	150
German	65
German and contemporary Chinese studies	66
German and English	54, 67
German and German law (law with)	69, 153
German and history	60, 67
German and international media communications studies	57, 68
German and politics	68
German (economics with)	69, 145
Graduate entry medicine	103
Graduate entry nursing adult child mental health	105

H

Health sciences foundation certificate	45
Hispanic studies	65
Hispanic studies (economics with)	69, 145
Hispanic studies and English	54, 67
Hispanic studies and history	60, 68
Hispanic studies and politics	68
Historical archaeology	49
History	59
History (ancient)	51
History and American studies	47, 60
History and ancient history	51, 59
History and archaeology	49, 60
History and East European cultural studies	59, 69
History and English	55, 60
History and French German Hispanic studies Russian	60, 67-68
History and history of art	59, 63
History and politics	59
History of art	63
History of art and archaeology	49, 63
History of art and English	55, 63
History and contemporary Chinese studies	60, 68
Humanities and arts with foundation year	45

I

Industrial economics	141
Industrial economics with insurance	141
International agricultural science	111
International economics and economics	145
International environmental science	123
International management	141
International media and communications studies	57
International media and communications studies and French German Portuguese Spanish	57, 68-69
International relations and Asian studies	155
International relations and politics	155

L

Latin American studies and American studies	47, 67
Law	153
Law with French and French law	69, 153
Law with German and German law	69, 153
Law with Spanish and Spanish law	69, 153
Liberal arts	71
Livestock and agricultural science	111

M

Management	141
Management (international)	141
Management, finance and accounting	149
Manufacturing engineering	93-94
Mathematical physics	137
Mathematics	129
Mathematics (financial)	129
Mathematics and economics	129
Mechanical engineering	93-94
Medical physics (physics with)	136
Medical physiology and therapeutics	101
Medicinal and biological chemistry	117
Medicine	103
Medicine (graduate entry)	103
Medicine with a foundation year	103
Microbiology	115
Midwifery	105
Modern European studies	60, 67
Modern languages	66

M

Modern language studies	66
Modern languages with business	67
Modern languages with translation	66
Molecular medicine and biochemistry	99
Molecular physics and chemistry	117
Music	73
Music and philosophy	73, 76
Music and music technology	73

N

Nanoscience (physics with)	137
Natural sciences	131
Neuroscience	139
Neuroscience (cognitive) and psychology	139
Nursing (adult child mental health)	105
Nursing (graduate entry) (adult child mental health)	105
Nutrition	125
Nutrition and food science	125
Nutrition and dietetics	127

P

Pharmaceutical sciences	133
Pharmacology	133
Pharmacy	133
Pharmacy (with integrated pre-registration scheme)	133
Philosophy	75
Philosophy and classical civilisation	51, 76
Philosophy and economics	76, 145
Philosophy and English	55, 76
Philosophy and French	68, 76
Philosophy and music	73, 76
Philosophy and physics	76, 137
Philosophy and psychology	76
Philosophy and theology	75, 79
Philosophy, politics and economics	75, 145
Philosophy, religion and ethics	75, 79
Physical geography and geology	150
Physical sciences and engineering foundation programme	45
Physics	135
Physics (mathematical)	137
Physics (molecular) and chemistry	117

P

Physics and philosophy	76, 137
Physics with astronomy	135
Physics with European language	136
Physics with medical physics	136
Physics with nanoscience	137
Physics with theoretical astrophysics	137
Physics with theoretical physics	137
Physiotherapy	106
Plant science	115
Politics and American studies	47
Politics and economics	155
Politics and French German Hispanic studies	68
Politics and history	59
Politics and international relations	155
Politics, philosophy and economics	75, 145
Portuguese and international media and communications studies	57, 69
Product design and manufacture	94-95
Psychology	139
Psychology and cognitive neuroscience	139
Psychology and philosophy	76

R

Rehabilitation (sport)	106
Religion, culture and ethics	79
Religion, philosophy and ethics	75, 79
Religious studies and theology	79
Russian and contemporary Chinese studies	66
Russian and history	60, 68
Russian studies	65

S

Science with foundation year	45
Social policy and criminology	142
Social policy and sociology	158
Social work	157
Sociology	158
Sociology and criminology	142
Sociology and social policy	158
Spanish and contemporary Chinese studies	66
Spanish and international media and communications studies	57, 69
Spanish and Spanish law (law with)	69, 153
Sport and exercise science	101
Sport rehabilitation	106
Statistics	129

T

Theology and biblical studies	79
Theology and philosophy	75, 79
Theology and religious studies	79
Theoretical astrophysics (physics with)	137
Theoretical physics (physics with)	137
Therapeutics and medical physiology	101
Translation (modern languages with)	66

V

Veterinary medicine and surgery	109
Veterinary medicine and surgery including a gateway year	109
Veterinary medicine and surgery including a preliminary year	109

Z

Zoology	115
---------	-----

Prospectus updates

For the most up-to-date information on our courses please visit nottingham.ac.uk/ugstudy

For updates to this prospectus please see nottingham.ac.uk/ugstudy/prospectusupdates

Prospectus information

This prospectus has been drafted approximately two years in advance of the academic year to which it applies. While every effort has been made to ensure that the information contained in this prospectus is accurate at the time of going to press, changes are likely to occur given the interval between publication and commencement of the course. It is therefore very important that you check our website for any updates before you apply for the course by visiting nottingham.ac.uk/ugstudy

Where there is a difference between the contents of this prospectus and our website, the contents of the website take precedence and represent the basis on which we intend to deliver our educational services to you.

Any offer of a place to study at the University is subject to terms and conditions which can be found at nottingham.ac.uk/go/admissionspolicies

The terms and conditions set out when, for example, we might make changes to your chosen course, to the fees payable or to student regulations with which all students are required to comply. You are advised to read these before making an application.

Publishing information

Published by External Relations – Marketing, University of Nottingham, February 2020

Photography: Sean Gallagher, Lisa Gilligan-Lee, Andrew Hallsworth, Martine Hamilton Knight, Simon Litherland, Phil Rowley, Tracey Whitefoot and Alex Wilkinson.

© University of Nottingham 2020. All rights reserved.

This prospectus is 100% recyclable. As one of the greenest universities in the world*, we're making sure that we print less. Please recycle this prospectus after use.

*Green metric 2019

This publication is available in alternative formats: **+44 (0)115 951 5559**

Contact us

All prospective student and applicant enquiries:

Student Recruitment Support Hub

+44 (0)115 951 5559
nottingham.ac.uk/enquire

General enquiries:

University switchboard

+44 (0)115 951 5151

Support for EU and international applicants:

International Student Recruitment

+44 (0)115 951 5247
nottingham.ac.uk/international

Travelling to Nottingham

Nottingham is in the East Midlands which is a two-hour train journey from London. The range of transport in the city means you can travel to any of our three UK campuses from any location.

Nottingham has buses, trams, and cycle routes, so getting around as a student is cheap and simple. The city centre is only a 15-minute bus journey away from University Park and Jubilee Campuses.

We're also close to the M1 motorway, and have a coach depot, a train station, and an airport close-by.

China campus:

+86 (0) 574 8822 2460
www.nottingham.edu.cn

Malaysia campus:

+6 (03) 8924 8686
www.nottingham.edu.my





**University of
Nottingham**

UK | CHINA | MALAYSIA

Open days 2020

Friday 26 June


Saturday 27 June

Friday 11 September

Saturday 12 September

**Book your place
nottingham.ac.uk/opendays**

**For undergraduate enquiries contact:
Student Recruitment Support Hub**

 **+44 (0) 115 951 5559**

 **nottingham.ac.uk/contact**

 **UniofNottingham**

 **@UniofNottingham**

 **@uniofnottingham**