



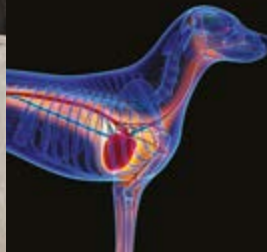
University of  
Nottingham

UK | CHINA | MALAYSIA

# Veterinary Medicine and Science



Detect it



Treat it



## Contents

Welcome	4
Why study with us?	5
Facilities and resources	6
Our courses	7
How will I study?	12
How do I apply?	14
Careers and employability	16
What our students say	18
Experience it	19



**Graduate with three qualifications**  
 Bachelor of Veterinary Medical Sciences (BVMedSci), Bachelor of Veterinary Medicine (BVM) and Bachelor of Veterinary Surgery (BVS)



### Get hands-on experience

with animal handling from day one



### Work with clinical associates

gaining exposure to a varied case-load



“I really like it being practical and getting hands-on, as well as learning all of the theory.”  
 Freddy Allen,  
 Veterinary Medicine and Science student



### Highest ranked UK veterinary school

for student satisfaction for the last seven years\*\*\*

\*\*\*National Student Survey, 2017.



Study a course which is recognised by the **RCVS\*** and the **EAEVE\*\***



\* Royal College of Veterinary Surgeons.  
 \*\* European Association of Establishments for Veterinary Education.



### Experience a variety of placements

from first opinion veterinary surgeries to specialist referral centres



**100%**

of undergraduates from the school secured work or further study within six months of graduation

Please see page 16 for more information.

# Welcome to the School of Veterinary Medicine and Science

**You are about to embark on the most exciting adventure of your life. We provide a fresh approach to veterinary education with a progressive and dynamic environment, which delivers an outstanding student experience.**

The veterinary world is facing new challenges and it is our aim to equip you with the diagnostic, medical, surgical and other skills required to succeed in a changing world.

We offer three exciting and innovative degree courses, which are designed with clinical outcomes in mind and based upon excellence in teaching informed by scientific research.

I strongly encourage you to consider applying to study veterinary medicine and surgery at Nottingham. We believe that our courses, which integrate clinical medicine and surgery with pathology and basic sciences, ensure that Nottingham graduates gain the best possible foundation on which to build any future career in the veterinary profession.

**Professor Gary England**  
Head of School



# Studying veterinary medicine and surgery at Nottingham

**Our innovative school will support you to become a confident and highly skilled veterinary professional.**

## Professional recognition

The school is recognised by the Royal College of Veterinary Surgeons (RCVS) and our degrees lead to registrable status with them after graduation.

We're one of only two UK veterinary schools fully accredited by the European Association of Establishments for Veterinary Education (EAEVE).

## Top for student satisfaction

Since 2011, we have been ranked as the best veterinary school for overall student satisfaction in the National Student Survey. We continue to work closely with our students to ensure their experience is the best it can be. In the latest survey (2017), our students rated us top across all topics, receiving a score of 100% for overall satisfaction.

In the latest (2016) Association of Veterinary Students survey, we were ranked top for several topics. These included career progression preparation, extra mural studies structure, and student welfare.

## An award-winning school

Liz Mossop, Professor of Veterinary Education, has been awarded a highly coveted National Teaching Fellowship. The award celebrates excellent practice and outstanding achievement in undergraduate and postgraduate teaching and learning.

In 2016, we were awarded an ASPIRE award which recognises excellence in student engagement. We are the only veterinary school to hold this award worldwide, and it was given to us because of the way we work with our students, engaging them fully in the academic community.

## Join a lively campus community

VetSoc is an active society that provides a vast range of social, pastoral and academic events for students to get involved with. There is a great community spirit among society members, which is highlighted through their 'Big Vet, Little Vet' peer mentoring scheme.

There is also a student-run Sutton Bonington Farmers' Market on campus on the first Wednesday of the month (in term time).

Various other events are held on campus for vet and biosciences students to get together, including SB Fest. Attractions usually include live music, art, fairground rides, a farmers' market and a beer festival.

\* National Student Survey, 2017 (NSS).

## At a glance

- Benefit from animal handling experience from day one
- Graduate with an additional award of BVMedSci, after completing an integrated research project in your third year
- Experience different veterinary placements, from first opinion veterinary surgeries to specialist referral centres



# Facilities and resources

## Campus location

The 1000-acre Sutton Bonington Campus where we are based is located in the beautiful countryside of South Nottinghamshire. It has its own library, sports centre, accommodation and social amenities. There are regular daily and evening bus services to University Park Campus in Nottingham and Nottingham city centre, allowing you to take full advantage of the social and sporting activities available there.

## Teaching facilities

The Veterinary School has superb facilities for both research and learning, including a large lecture theatre and seminar rooms, numerous small-group teaching rooms, dissection and teaching laboratories, a surgery suite and a clinical skills laboratory.

As we provide our learning materials electronically, all students are given a voucher towards the cost of a laptop and software to support their studies. Information will be provided on all the software that you will need to enhance your learning experience.

The school provides stables for students' horses, a large indoor arena, and has a dedicated large animal smallholding, an exotic and pet unit and an apiary.

There are also teaching and research facilities for cattle, pigs, poultry and sheep associated with the University's commercial farm, which includes a dairy centre.



# Our courses

Degree title	UCAS code	Duration	A levels	IB
<b>Single honours</b>				
BVM BVS with integrated BVMedSci Veterinary Medicine and Surgery	D100	5 years	AAB	34
BVM BVS with integrated BVMedSci Veterinary Medicine and Surgery including a Gateway Year	D190	6 years	BBC	28
BVM BVS with integrated BVMedSci Veterinary Medicine and Surgery including a Preliminary Year	D104	6 years	AAB	34

## English language requirements

IELTS 7.5 (no less than 7.0 in any element). For details of other English language tests and qualifications we accept, please see [nottingham.ac.uk/go/alternativerequirements](http://nottingham.ac.uk/go/alternativerequirements)

Around one-third of our UK students receive our means-tested core bursary, worth up to £2,000 a year (2018 entry figure; subject to change). For details, see [nottingham.ac.uk/financialsupport](http://nottingham.ac.uk/financialsupport)



# BVM BVS with integrated BVMedSci Veterinary Medicine and Surgery

**The majority of your educational experience is provided in body-system based modules, each covering all the common domestic, wildlife and exotic species.**

Each module is delivered once as a veterinary science subject (during year one or two) and again as a clinical subject (during year three or four). We choose this curriculum style so you benefit from maximised animal handling and clinical experience.

## Years one and two

During your first two years, you will learn primarily about the 'normal' animal using clinical case examples and scenarios. You will also develop animal handling skills, and an understanding of animal husbandry, relevant industries and the role of animals in society. The Personal and Professional Skills module focuses on learning, communication and the professional role of the veterinary surgeon.

## Year three

Your third year provides you with an opportunity to focus on a 10-week research project of your choice. You will also develop further understanding of principles underpinning clinical veterinary sciences and veterinary public health. At the end of year three, you will graduate with a BVMedSci Veterinary Medical Sciences degree.

## Year four

Continuing from year three, year four develops knowledge on animal production, trauma management, disease processes, diagnosis, management and prevention of disease. Personal and Professional Skills is expanded to incorporate business skills and entrepreneurship.

## Year five

The final year consists of a series of rotations comprising small-group clinical teaching in a hospital/practical/laboratory situation at our Clinical Associates. Teaching and learning is based upon observation, discussion and practical experience. At each establishment, you are under the supervision of University academic staff placed at, and working within, the Clinical Associate.

## Extra Mural Studies (EMS)

A total of 12 weeks of Animal Husbandry Extra Mural Studies (AHMS) and 26 weeks of Clinical Extra Mural Studies (CEMS) are also undertaken throughout the course. EMS and CEMS are organised in accordance with recommendations as defined by the Royal College of Veterinary Surgeons (RCVS).

EMS exposes you to the practical, ethical, financial, managerial and interpersonal aspects of professional practice. EMS placements take place during University holidays as well as during year five. Up to four weeks of AHMS and 12 weeks of CEMS may be undertaken abroad.

# Preliminary and gateway courses

**The preliminary and gateway courses are taught together.**

You will study the basic science subjects of:

- animal biology
- chemistry
- animal care and behaviour

These are taught in integrated modules that illustrate how these key areas interlink. You will learn key chemical concepts and the knowledge required of animal biology.

In addition, you will:

- expand your animal handling skills
- broaden your understanding of relevant industries
- develop an appreciation of the role of animals in society

On successful completion of the year, you will join year one of the five-year BVM BVS with integrated BVMedSci course.

## Which course is right for me?

### Preliminary year

This course is for you if you have high academic achievement but do not have the required science qualifications for direct entry.

### Gateway year

This course has been specifically developed for students who are studying science subjects but whose grades are not at the level required for direct entry into year one of the five-year programme. This may be due to lack of opportunity or disadvantaging circumstances.



# Typical modules for all courses

Typical modules		
Preliminary/gateway year	Year one	Year two
<p><b>Core</b></p> <ul style="list-style-type: none"> <li>Animal Care and Behaviour</li> <li>Biology: An Introduction to Body Systems</li> <li>Biology: Cell Structure and Biochemistry</li> <li>Biology: Health and Disease</li> <li>Chemistry: Atomic Structure and Bonding</li> <li>Chemistry: Compounds and Reactions</li> <li>Introductory Maths</li> </ul>	<p><b>Core</b></p> <ul style="list-style-type: none"> <li>Animal Health and Welfare 1</li> <li>Lymphoreticular Cell Biology 1</li> <li>Veterinary Cardiorespiratory System 1</li> <li>Veterinary Musculoskeletal System 1</li> <li>Veterinary Neuroscience 1</li> <li>Veterinary Personal and Professional Skills 1</li> </ul>	<p><b>Core</b></p> <ul style="list-style-type: none"> <li>Animal Health and Welfare 2</li> <li>Veterinary Endocrine and Integument Systems 1</li> <li>Veterinary Gastrointestinal System 1</li> <li>Veterinary Personal and Professional Skills 2</li> <li>Veterinary Reproduction 1</li> <li>Veterinary Urinary System 1</li> </ul>
Year three	Year four	Year five
<p><b>Core</b></p> <ul style="list-style-type: none"> <li>Clinical and Professional Skills</li> <li>Principles of Clinical Veterinary Science</li> <li>Veterinary Public Health</li> <li>Veterinary Research Project</li> </ul>	<p><b>Core</b></p> <ul style="list-style-type: none"> <li>Lymphoreticular Cell Biology 2</li> <li>Veterinary Cardiorespiratory System 2</li> <li>Veterinary Endocrine and Integument Systems 2</li> <li>Veterinary Gastrointestinal System 2</li> <li>Veterinary Musculoskeletal System 2</li> <li>Veterinary Neuroscience 2</li> <li>Veterinary Personal and Professional Skills 4</li> <li>Veterinary Reproduction 2</li> <li>Veterinary Urinary System 2</li> </ul>	<p><b>Core</b></p> <ul style="list-style-type: none"> <li>Veterinary Clinical Practice (Equine)</li> <li>Veterinary Clinical Practice (Farm Animal, Veterinary Public Health, Zoo and Wildlife Practice)</li> <li>Veterinary Clinical Practice (Small Animal)</li> <li>Veterinary Personal and Professional Skills 5</li> </ul>

Modules may change, for example due to curriculum developments. The above list is a sample of typical modules that we offer, not a definitive list. The most up to date information can be found on our website at [nottingham.ac.uk/ugstudy/vet](http://nottingham.ac.uk/ugstudy/vet)

# Example timetable

This is an example timetable taken from year one, week four of the five-year course. This is to give you an idea of how your time may be spent.

	Mon	Tues	Wed	Thurs	Fri
9-10am	<b>Personal and Professional Skills</b> Learning techniques Introduction to assessments; lecture and practical	Private Study	<b>Musculoskeletal System</b> Lameness evaluation (equine and small animal) lecture		<b>Musculoskeletal System</b> Introduction to biomechanics lecture
10-11am		<b>Musculoskeletal System</b> Introduction to immunology lecture	<b>Musculoskeletal System</b> Practical four - Musculoskeletal examination; horse and joint smear practical	<b>Musculoskeletal System</b> Bone as a living tissue; adaptation and remodelling lecture	
11.15am-12.15pm	<b>Musculoskeletal System</b> Structure and function; bone lecture	<b>Musculoskeletal System</b> Anatomy and histology of bone and cartilage; self-directed, small group work	<b>Musculoskeletal System</b> Connective tissue; cells and molecules lecture	<b>Musculoskeletal System</b> Cartilage as a living tissue; osteoarthritis, joint inflammation and cartilage repair lecture	
12.15-1pm	<b>Musculoskeletal System</b> Structure and function; cartilage lecture		<b>Musculoskeletal System</b> Imaging techniques; small group teaching	Lunch	
1-2pm	Lunch	Lunch	Lunch	Lunch	<b>Musculoskeletal System</b> Stress fractures; small group learning
2-3pm	<b>Musculoskeletal System</b> Musculoskeletal disease in cattle; small group learning	<b>Musculoskeletal System</b> Practical three - Bone and joint anatomy and histology practical	<b>No teaching - sport/leisure time</b>	<b>Animal Health &amp; Welfare</b> Animal handling six week rotation; canine, equine, bovine, sheep, exotics or poultry practical	<b>Musculoskeletal System</b> Bone biomechanics and forces; self-directed small group work
3-4pm	<b>Musculoskeletal System</b> Structure and function; joints and synovial structures lecture				<b>Musculoskeletal System</b> Joint movement and lubrication; self-directed small group work
4-5pm	<b>Musculoskeletal System</b> Locomotor function (species adaptation) lecture				<b>Musculoskeletal System</b> Wrap up session



# Engaging study, incredible results

You will experience a veterinary course that is underpinned by the latest educational techniques and which will keep you enthused and inspired to become an outstanding veterinary professional on graduation.

## Teaching and learning

Teaching is delivered progressively in a clinically integrated programme, so you are always seeing the clinical relevance of what you study. We use four main teaching methods:

- signposting lectures to cover key topics
- practical classes which incorporate clinical skills
- structured self-study time to develop concepts further
- clinical relevance sessions to practise problem-solving with clinical scenarios

## Assessment

Our assessment strategy is designed to assess achievement of the wide variety of skill and knowledge-based learning outcomes through different types of assessment. Skills and behaviours are assessed through methods including:

- Directly Observed Practical Skills
- Objective Structured Practical Examinations
- Portfolios
- Rotation Professionalism Assessment

Knowledge is principally assessed in the winter and summer examinations, which are held online and through spot tests and short answer papers. In addition, we provide informal assessment opportunities which allow you to evaluate and reflect on the development of your skills and knowledge as you progress through the course.

## Clinical Associates

During the placement year, you will experience first and second opinion cases. We choose to work with associates, rather than have our own referral hospital, to make sure you have exposure to a varied case-load.

The Clinical Associates we currently work with are:

- Bransby Horses
- Defence Animal Centre
- Dick White Referrals
- Poultry Health Services
- Oakham Veterinary Hospital
- PDSA
- Pinfold Vets
- Scarsdale Veterinary Group
- Twycross Zoo

## Intercalation

You'll also have the opportunity to intercalate postgraduate degrees - PGCert, MRes and PhD - during your study, normally after year three or four, subject to funding availability.

## Key Information Sets

Key Information Sets (KIS) are comparable sets of information about full or part-time undergraduate courses and are designed to meet the information needs of prospective students.

All KIS data is published on the Unistats website: [unistats.co.uk](http://unistats.co.uk)

For Nottingham's KIS data, please see individual course entries at [nottingham.ac.uk/ugstudy](http://nottingham.ac.uk/ugstudy)



# How to apply

All applications for an undergraduate place to study at the University of Nottingham, including applications by international students, must be made through UCAS.

The deadline for UCAS applications for all veterinary courses is 15 October 2018.

Full details of the admissions process can be found on our website at [nottingham.ac.uk/vet/admissions](http://nottingham.ac.uk/vet/admissions)

## Your personal statement

This is the section of your UCAS form that tells us most about you, and you should make the best use of it. Be as specific and detailed as you can – we would like to see that you are a student who can work hard, be self-motivated and make the best possible use of the opportunities that our courses offer you. We would also like to hear about any skills you have gained through extracurricular activities.

## Minimum entry requirements

The A level grades needed for all our courses are listed on page 7. For full details, including required subjects, GCSE grades and any widening participation requirements, please visit the individual courses' online prospectus pages at [nottingham.ac.uk/ugstudy/vet](http://nottingham.ac.uk/ugstudy/vet)

## Biomedical Admissions Test (BMAT)

We do not require BMAT scores for entry on to any of our courses.

## Alternative qualifications

In this brochure you will find our A level entry requirements but we accept a much broader range of qualifications.

These include:

### Veterinary Medicine and Surgery (D100)

- Cambridge Pre-U
- Welsh Baccalaureate Advanced Diploma

### Veterinary Medicine and Surgery including a Preliminary Year (D104)

- Access to HE Diploma
- BTEC Extended Diploma
- Cambridge Pre-U
- City and Guilds
- Welsh Baccalaureate Advanced Diploma

### Veterinary Medicine and Surgery including a Gateway Year (D190)

- Access to HE Diploma
- BTEC Extended Diploma
- Cambridge Pre-U
- City and Guilds
- Welsh Baccalaureate Advanced Diploma

This list is not exhaustive; we will consider applicants with other qualifications on an individual basis. Please contact us to discuss the suitability of your qualification.

## Assessment days

We interview candidates at our assessment days, which are normally held between December and March. For details about the assessment days, please visit [nottingham.ac.uk/vet/admissions](http://nottingham.ac.uk/vet/admissions)

## Work experience

All applicants must have gained at least four weeks' experience of working with a broad range of animals before they apply. Details of what work experience could include can be found at [nottingham.ac.uk/vet/workexperience](http://nottingham.ac.uk/vet/workexperience)

## Flexible admissions policy

We recognise that some educational and personal circumstances affect achievement. If we judge that you have experienced circumstances that have adversely affected your achievement, we will consider them when assessing your academic potential. Some courses may vary the offer as a result. For the most up to date information about our offers, please see the entry requirements section of our course pages on our online prospectus. For more information about this policy, please see [nottingham.ac.uk/ugstudy/applying](http://nottingham.ac.uk/ugstudy/applying)

## Mature applicants

We encourage applications from mature applicants. You should apply through UCAS. Find out more at [nottingham.ac.uk/mature](http://nottingham.ac.uk/mature)

## International applicants

The University provides a range of information and advice for international applicants. If you are unable to attend an open day, we can meet you in your country at one of our overseas events or arrange an individual visit to the University. For further information please visit [nottingham.ac.uk/go/international-applicants](http://nottingham.ac.uk/go/international-applicants)

## Deferred entry

Applicants who wish to defer their entry by a year will not be at a disadvantage. Please tell us something about your plans for your gap year in your UCAS personal statement.

## Fitness to practise

The award of the BVM BVS with integrated BVMedSci degree will entitle the graduate to be registered by the Royal College of Veterinary Surgeons (RCVS) and to practise as a veterinary surgeon. By awarding a veterinary degree, the University is therefore confirming that the graduate is fit to practise to the high standards laid down by the RCVS. Applicants will be checked against the Excluded Students Database as maintained by the Medical Schools Council, Dental Schools Council, Pharmacy Schools Council and Vet Schools Council. For more information about fitness to practise, please visit [nottingham.ac.uk/vet/fitnesstopractise](http://nottingham.ac.uk/vet/fitnesstopractise)

In addition all students are assessed by the University's occupational health service to ensure fitness to train and the ability to meet the required RCVS standards on graduation. For further information see [heops.org.uk](http://heops.org.uk)

## Equal opportunities policy

The University aims to create the conditions whereby students and staff are treated solely on the basis of their merits, abilities and potential, regardless of gender, race, colour, nationality, ethnic or national origin, age, socio-economic background, disability, religious or political beliefs, trade union membership, family circumstances, sexual orientation or other irrelevant distinction.



# Outstanding careers support

## Transferable skills

Our problem-oriented approach to learning will provide you with core competencies that include problem-solving skills and an understanding of research, preparing you well for your future professional development. The veterinary profession itself offers many diverse and stimulating career opportunities combined with the privilege of working with animals. At Nottingham, we encourage all our students to build a broad range of skills that will appeal to employers.

100%   
undergraduates

in the school who were available for employment secured work or further study within six months of graduation.\*

£27,620 

was the average starting salary with the highest being £36,000.\*



## Get the Advantage

The career-enhancing Nottingham Advantage Award recognises and rewards your extracurricular activities. With a choice of over 200 modules, you can hone the key skills employers are looking for. From developing your leadership skills and learning a language to public speaking and volunteering, you will leave university with demonstrable experience that sets you apart from other graduates. For further information, visit [nottingham.ac.uk/careers/advantage](http://nottingham.ac.uk/careers/advantage)

## Postgraduate opportunities

The School of Veterinary Medicine and Science offers suitably qualified graduates excellent opportunities to study for MRes or PhD, and also the clinically focused degrees of PG Certificate, MVM/MVS and DVetMed/DVetSurg in a wide range of veterinary, biomedical, biological and statistical research fields. Undergraduate students have the opportunity to intercalate postgraduate degrees during their veterinary course.

## Amplify your potential

Whether you already have a plan or need some inspiration, your Careers and Employability Service is here to help.

Academic excellence and employability go hand in hand at Nottingham. Your course, and the diverse student experiences we offer, will enable you to develop the skills and professional competencies required to thrive in the job market of the future.

We will help you explore your options, so you feel confident making choices about what you want to achieve. Our team will support you as you build your CV, search for jobs, prepare applications, practise your interview technique, and much more.

### Recent graduate destinations:

- **Veterinary Officer, Royal Army Veterinary Corps**
- **Anaesthesia Resident, Glasgow University**
- **Veterinary Surgeon, Anvivets**
- **Diagnostic Imaging Resident, Royal Veterinary College**
- **Veterinary Surgeon, Shanaghan Veterinary Services**



@UoNCareers



CareersUoN

\* Known destinations of full-time home undergraduates who were available for work 2015/16. Salaries are calculated based on the median of those in full-time paid employment within the UK.

What our students say

# What our students say

Experience it



Experience living and studying abroad as part of our overseas summer schools

[nottingham.ac.uk/go/summerschools](http://nottingham.ac.uk/go/summerschools)



Charli Twyford

“As a very small, close-knit campus, the societies here are more like little families of students across all years and courses, with a shared interest. Personally, I am very active in the music and performance groups and I love it!”  
Veterinary student



Accommodation to suit every budget and personal choice

[nottingham.ac.uk/accommodation](http://nottingham.ac.uk/accommodation)



30 minutes from the city for music, food and shopping

[nottingham.ac.uk/nottinghamlife](http://nottingham.ac.uk/nottinghamlife)

200+

student-led groups, clubs and societies at your Students' Union  
[su.nottingham.ac.uk](http://su.nottingham.ac.uk)



Abby St John

“I really enjoy the amount of practical's we have, they are a great way to consolidate what we have learnt in lectures.”  
Veterinary student



Chris Forster

“The facilities work perfectly for anything we need to do, whether lectures, practical's or self-study. There is also loads of support from your peers, older years and staff.”  
Veterinary student



One of the UK's leading universities for sport\* with over 70 student sports clubs

[nottingham.ac.uk/sport](http://nottingham.ac.uk/sport)

\* British Universities and Colleges Sports Standings, 2016-17.



Join in with the vibrant musical life on campus and in the city

[nottingham.ac.uk/music/performance](http://nottingham.ac.uk/music/performance)



Student Service Centres on all UK campuses for support and advice

[nottingham.ac.uk/student-services](http://nottingham.ac.uk/student-services)

Choose from 9 modern languages to study alongside your course

[nottingham.ac.uk/language-centre](http://nottingham.ac.uk/language-centre)





University of  
Nottingham

UK | CHINA | MALAYSIA

For undergraduate enquiries contact:  
Student Recruitment Enquiries Centre



+44 (0)115 951 5559



[nottingham.ac.uk/contact](https://nottingham.ac.uk/contact)



[nottinghamvetschool](https://nottinghamvetschool)



[@NottinghamVets](https://twitter.com/NottinghamVets)

[nottingham.ac.uk/vet](https://nottingham.ac.uk/vet)

This publication  
is available in  
alternative formats:  
+44 (0)115 951 5559



© University of Nottingham 2018.  
All rights reserved. Printed May 2018.

This brochure has been drafted in advance of the academic year to which it applies. Every effort has been made to ensure that the information contained in this brochure is accurate at the time of publishing, but changes (for example to course content) are likely to occur given the interval between publication and commencement of the course. It is therefore very important to check our website for any updates before you apply for the course by following [nottingham.ac.uk/ugstudy](https://nottingham.ac.uk/ugstudy). Where there is a difference between the contents of this brochure and our website, the contents of the website take precedence.